

## Product datasheet for MR231509

### Atp4a (NM\_001290627) Mouse Tagged ORF Clone

#### Product data:

Product Type:	Expression Plasmids
Product Name:	Atp4a (NM_001290627) Mouse Tagged ORF Clone
Tag:	Myc-DDK
Symbol:	Atp4a
Vector:	pCMV6-Entry (PS100001)
E. coli Selection:	Kanamycin (25 ug/mL)
Cell Selection:	Neomycin
ORF Nucleotide Sequence:	>MR231509 representing NM_001290627 Red=Cloning site Blue=ORF Green=Tags(s)

CTATAGGGCGGCCGGGAATTCGTCGACTGGATCCGGTACCGAGGAGATCTGCCGCCGCGATCGCCGGCGC  
GCC

ATGGGGAAGGCAGAGAATTATGAACTGTACTCAGTGGAACTGGGGTCTGGCCCTGGTGGGGACATGACTG  
CCAAGATGAGCAAGAAGAAGGCAGGAGGTGGGGAGGCAAGAAGAAGGAGAAGCTGGAGAACATGAAGAA  
GGAGATGGAGATTAACGACCACCAGCTATCAGTGTCTGAGCTGGAGCAGAAGTATCAGACCAGCGCCACC  
AAGGGCCTGAAGGCGAGCTGGCAGCTGAGCTGCTGCTGAGGGATGGACCAATGCGCTCCGGCCACCTC  
GGGGCACTCCCGAGTATGTGAAGTTTGGCCGTGAGCTGGCAGGTGGTCTGCAGTGCCTCATGTGGGTGGC  
TGCTGCTATCTGCCTCATTGCCTTTGCCATCCAGGCCAGCGAGGGTGACCTGACCACTGATGATAATCTG  
TACCTGGCGGTGGCACTCATTGCTGTGGTTGTGGTCACTGGCTGTTTTGGCTACTACCAGGAGTTCAAGA  
GCACAAATATCATCGCCAGCTTCAAGAATCTTGTACCCAGCAAGCCACTGTGATCCGAGACGGGGACAA  
GTTCCAGATCAACCGGATCAGCTTGTGGTGGCGACCTGGTGGAGATGAAAGGCGGGGACCGCTGCCA  
GCAGACATCCGATTCTGTGAGCCAGGCTGCAAGGTGGACAACCTCTCGCTCACTGGAGAGTCTGAAC  
CGCAGACCCGCTCGCCGAGTGTACACATGAGAGTCCCCTTGAGACCCGCAACATCGCCTCTTCTCCAC  
CATGTGCTGGAGGGAACAGCTCAGGGTTTGGTGGTGGACCCGCGATCGCACCATCATTGGGCGCATC  
GCCTCGCTGGCCTCGGGTGTGGAAAACGAGAAGACTCCGATTGCAATCGAGATTGAACATTTTGTGGACA  
TCATTGCCGGCCTGGCCATCCTCTTGGTGGCCATTCTTGTGGTGGCCATGTGATTGGCTATACCTT  
CCTTCGGGCCATGGTCTTCTTATGGCCATTGTGGTAGCCTATGTGCCTGAGGGGCTGCTGGCAACTGTC  
ACAGTCTGCCTGTCACTGACAGCAAAGAGTTGGCCAGTAAAACTGCGTGGTTAAAACTTAGAAGCAG  
TTGAGACCCTAGGTTCTACATCAGTCACTGCTCAGACAAGACAGGAACCTCACTCAGAACCAGCATGAC  
GGTGTCTCATCTATGGTTTGACAACCATCCACACGGCGGACACCACAGAAGACCAGTCAGGGCAAACG  
TTCCAGTCAGTCGTCGAGACATGGCAGCGCTGTGCCGCTGCTCACCCTGTGCAACCCGCGCTTCA  
AGTCCGGCCAGGACGCGGTGCCGTGCCAAGCGCATCGTGATCGGAGACGCGTCAAGACTGCGCTGCT  
CAAGTTTTCGGAGCTGACGTTGGCAACGCCATGGGTTACAGGGACCGCTTCCCAAAGTTTGGCAGATC  
CCCTTCAACTCCATCAACAAGTTCCAGCTGTCCATTACACCTGGAGGATCCACGCGACTCCCGGCACC  
TGCTGGTGTGAAAGGGCGCCCTGAGCGCTGCTGGAGCGTTGCAGCTCCATCCTCATCAAGGGCCAGGA  
GCTGCCTCTGGACGAGCAATGGCGTGGGCCTCCAGACAGCCTACCTCAGCCTGGGAGGCTAGGCGAA



[View online »](#)

CGTGTTCTTGTTTCTGCCAGCTCTACCTGAATGAGAAGGACTACCCACCTGGCTATGCCTTTGATGTGG  
 AGGCCATGAACCTTCCGAGTAGTGGCCTCTGCTTTCGGGACTTGTATCCATGATTGACCTCCCCGGGC  
 CACCGTTCCTGATGCTGTGCTCAAAAGCCGACGGCAGGCATCCGGGTGATCATGGTGACCGGTGACCAT  
 CCCATCACGGCAAGGCCATCGCAGCCAGCGTGGGTATCATCTCAGAGGGCAGCGAGACAGTGAAGACA  
 TCGCCGCCCGCTCCGGATGCCGGTGGACCAGTTAATAGGAAGGATGCCCGGCCTGCGTGATCAATGG  
 TATCGAGCTGAAGGACATGGACCCGTCTGAGCTGGTGGAGGCGCTACGCACCCACCTGAGATGGTGT  
 GCTCGAACCAGTCTCAGCAGAAGCTGGTGATTGTGGAGAGTTGTCAGCGACTGGTGCCATTGTGGCTG  
 TAACAGGGGATGGTGTGAATGACTCCCCAGCCCTGAAGAAAGCTGACATTGGTGTAGCCATGGGCATTGC  
 TGGCTCGGATGCTGCTAAAAATGCTGCTGACATGATCTTGTGGATGACAACCTTGTCTCCATTGTGACA  
 GGCGTGGAGCAGGGCCGACTGATCTTTGACAACCTGAAGAAATCCATTGCATATACACTGACCAAGAACA  
 TTCCAGAACTGACACCTACCTTATCTATACTGTCAGTGTGCCCTACCCCTGGGTGTATCACCAT  
 TCTCTTATAGAACTCTGCACAGATATCTTCCATCTGTGTCCCTGGCGTACGAGAAGGCTGAGAGCGAC  
 ATCATGCACCTGCGCCACGGAACCCTAAGCGTGACCGGTTGGTCAACGAACCCCTGGCTGCTTATTCT  
 ATTTCCAGATTGGTGCCATTGATCATTGCGCGCTTGTGACTACTTACGGCCATGGCGCAGGAGGG  
 CTGTTCCCTCTGTTGTGTAGGACTCGGCCACAATGGGAGGACCACCATCTACAAGATCTTCAAGAC  
 AGCTACGGCCAGGAATGGACATTTGGTACGCGCTGTACCAGCAGTACACCTGTTACACCGTGTCTTCA  
 TCAGCATCGAGATGTGCCAGATCGCAGATGTCCTCATCCGAAGACACGGCGCCTCTCTGTTTTCCAGCA  
 GGGATTCTTCAAGAAAGATCCTGGTGTGATCGCCATCGTGTCCAGGTCTGCATTGGCTGCTTCTGTGC  
 TACTGCCCAGGGATGCCTAACATCTTCAACTTCATGCCATCCGGTCCAGTGGTGGTGGTCCCATGC  
 CCTTCGGCCTTCTCATCTTGTCTATGATGAGATCCGGAACCTGGAGTTCGCTGTTGCCAGGGAGCTG  
 GTGGGACCAGGAACTCTACTAT

AGCGGACCGACGCGTACGCGGCCGCTCGAGCAGAACTCATCTCAGAAGAGGATCTGGCAGCAAATGATATCC  
 TGGATTACAAGGATGACGACGATAAGGTTTAA

**Protein Sequence:**

>MR231509 representing NM\_001290627  
 Red=Cloning site Green=Tags(s)

MGKAENYELYSVELGSGPGDMDAKMSKKKAGGGGKKKEKLENMKKEMEINDHQLSVSELEQKYQTSAT  
 KGLKASLAAEALLLRDGNALRPPRGTPPEYVKFARQLAGGLQCLMWVAAAICLIAFAIQASEGDLTTDDNL  
 YLAVALIAVVVVVTCFGYYQEFKSTNIIASFKNLVPQQATVIRDGDKFQINADQLVVGDLVEMKGGDRVP  
 ADIRILSAQGCKVDNSSLTGESEPQTRSPECTHESPLETRNIAFFSTMCLEGTAQGLVSTGDRITIGRI  
 ASLASGVENEKTPIAIEIEHFVDIIAGLAIFGATFFVVMCIGYTFLRAMVFFMAIVVAYVPEGLLATV  
 TVCLSLTAKRLASKNCVKNLEAVETLSTSVICSDKTGTLTQNRMTVSHLWFDNHIHTADTTEDQSGQT  
 FDQSSETWRALCRVLTLCNRAAFKSGQDAVPPVKRIVIGDASETALLKFSELTLGNAMGYRDRFPKVCEI  
 PFNSINKFQLSIHTLEDPRDSRHLLVMKGAPERVLERCSSILIKGQELPLDEQWREAFQTAYLSLGGLE  
 RVLGFCQLYLNEKDYPGAFDVEAMNFPSSGLCFAGLVSMIDPPRATVPDAVLKCRTAGIRVIMVTDGH  
 PITAKAIAASVGIISEGSETVEDIAARLRMPVDQVNRKDARACVINGMQLKMDPSELVEALRTHPEMVF  
 ARTSPQQLVIVESCQRLLGAIIVAVTGDVNDSPALKKADIGVAMGIAGSDAAKNAADMILLDDNFASIVT  
 GVEQGRILFDNLKKSIAAYTLTKNIPELTPYLIYITVSVPLPLGCITILFIELCTDIFPSVSLAYEKAESD  
 IMHLRPRNPKRDRLVNEPLAAYSFYQIGAIQSFAGFADYFTAMAQEGWFPLLCVGLRPQWEDHHLQDLQD  
 SYGQEWTFGQRLYQYTCYTVFFISIEMCQIADVLIRKTRRLSVFQQGFFRNKILVIAIVFQVCIGCFCLC  
 YCPGMPNIFNFMPIRFQWWLVPMPFGLLIFVYDEIRKLGVRCCPGSWWDQELYY

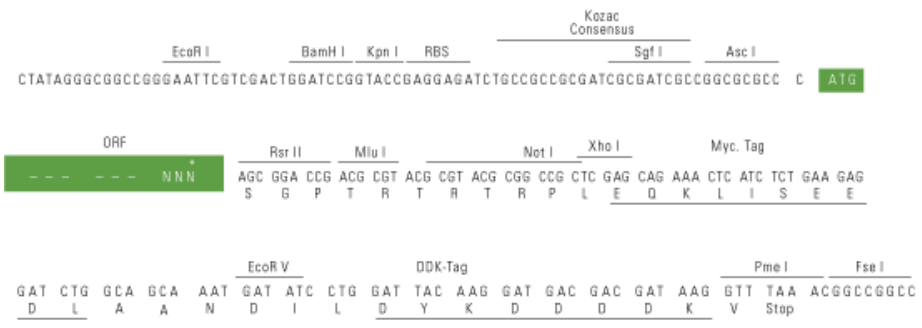
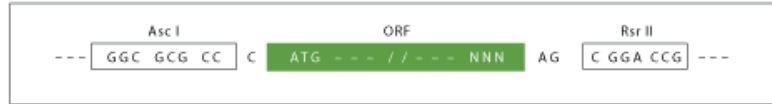
SGPTRTRPLEQKLI SEEDLAANDILDYKDDDDKV

**Restriction Sites:**

Ascl-RsrII

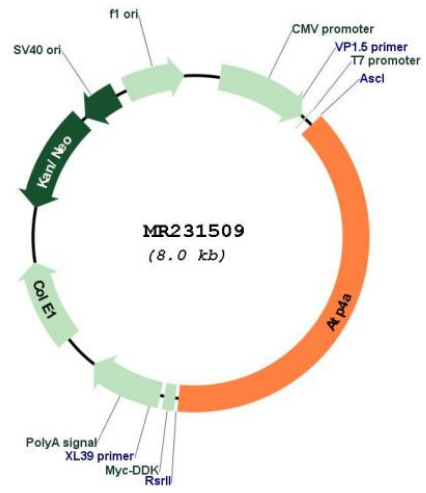
**Cloning Scheme:**

Cloning sites used for ORF Shuttling:



\* The last codon before the Stop codon of the ORF

**Plasmid Map:**



ACCN: NM\_001290627

ORF Size: 3102 bp

<b>OTI Disclaimer:</b>	The molecular sequence of this clone aligns with the gene accession number as a point of reference only. However, individual transcript sequences of the same gene can differ through naturally occurring variations (e.g. polymorphisms), each with its own valid existence. This clone is substantially in agreement with the reference, but a complete review of all prevailing variants is recommended prior to use. <a href="#">More info</a>
<b>OTI Annotation:</b>	This clone was engineered to express the complete ORF with an expression tag. Expression varies depending on the nature of the gene.
<b>Components:</b>	The ORF clone is ion-exchange column purified and shipped in a 2D barcoded Matrix tube containing 10ug of transfection-ready, dried plasmid DNA (reconstitute with 100 ul of water).
<b>Reconstitution Method:</b>	<ol style="list-style-type: none"> <li>1. Centrifuge at 5,000xg for 5min.</li> <li>2. Carefully open the tube and add 100ul of sterile water to dissolve the DNA.</li> <li>3. Close the tube and incubate for 10 minutes at room temperature.</li> <li>4. Briefly vortex the tube and then do a quick spin (less than 5000xg) to concentrate the liquid at the bottom.</li> <li>5. Store the suspended plasmid at -20°C. The DNA is stable for at least one year from date of shipping when stored at -20°C.</li> </ol>
<b>RefSeq:</b>	<u><a href="#">NM_001290627.1</a></u> , <u><a href="#">NP_001277556.1</a></u>
<b>RefSeq Size:</b>	3497 bp
<b>RefSeq ORF:</b>	3105 bp
<b>Locus ID:</b>	11944
<b>Cytogenetics:</b>	7 19.2 cM
<b>MW:</b>	114.5 kDa