

Product datasheet for MR231504

Tbc1d1 (NM_001289514) Mouse Tagged ORF Clone

Product data:

Product Type: Expression Plasmids
Product Name: Tbc1d1 (NM_001289514) Mouse Tagged ORF Clone
Tag: Myc-DDK
Symbol: Tbc1d1
Synonyms: 1110062G02Rik; AI385682; AW555803; mKIAA1108; Nob1; Nobq1; Tbc1
Vector: pCMV6-Entry (PS100001)
E. coli Selection: Kanamycin (25 ug/mL)
Cell Selection: Neomycin
ORF Nucleotide Sequence: >MR231504 representing NM_001289514
 Red=Cloning site Blue=ORF Green=Tags(s)

TTTTGTAATACGACTCACTATAGGGCGGCCGGAATTCGTCGACTGGATCCGGTACCGAGGAGATCTGCC
 GCCGCGATCGCC

ATGTCACCATTGTTTCAGCTGGGTGGCCAAGGTGCCTGAGATCATCAGCTCCATCCGGCAGGCCGGGAAGA
 TTGCCCGCAGGAAGAGCTGCGTTGCCCTCCGAGTTCGACGATACCTTCGCCAAAAAGTTCGAGGTGCT
 CTTCTGTGGCCGGGTGACTGTGGCTCACAAGAAGGCCACCCGCACTGATTGACGAGTGTATCGAGAAG
 TTCAACCATGTGAGCTGTGGTCGCGAGAACGGACTGGGAAGCGCCACCGGCAGCCATCAGCGCCTGGCC
 CCAGGCCCATGCGCAAATCCTTCTCACAGCCTGGACTGCGCTCGCTGGCCTTCAGGAAGGAGTTCAGGA
 CGCTAGCCTCCGAGTAGCACCTTTAGCTCCTTTGACAATGACATAGAGAACCACCTCATCGGTGGGCAC
 AATGTGGTTCAGCCACAGACATGGAGGAGAACCAGAACTATGCTGTTACGATTGGCCAATCTGAAGTTT
 ACCTCATCAGTCTGACACCAAAAAGATTGCACTGGAGAAAAATTTAAGGAGATATCCTTTTGCTCTCA
 GGGCATCAGACATGTGGACCACTTTGGATTCATCTGCCGAGAGTGCTCGGGTGGCGGCAGTGGCGGCTTT
 CATTTTGTCTGTTACGTGTTCCAGTGCACAAATGAAGCTCTGGTTGACGAGATCATGACTCTGAAGC
 AGGCTTTCACGGTAGCTGCGGTGCAGCAGACGGCTAAGGCACCCAGCTCTGTGAGGCTGCCCTT
 GCAAGGCCTGCACAAGCTCTGCGAAAGGATAGAGGGAATGAATTCATCTAAAACCAATAGAACTCCAG
 AAGCACTTGACCACACTGACCAATCAGGAGCAGGCCACCATATTCGAGGAGGTTAGAAAATTGAGACCAA
 GAAACGAGCAGCGAGAGAATGAATTAATTTCTTTCTGAGGTGCTTATATGAAGAGAAGCAAAAAGA
 GCACAGCCACACTGGGGAGCCAAAGCAGACACTACAGGTGGCAGCAGAGAATATTGGGAGTGACCTGCCA
 CCCAGTGTAGCCGGTTCAGGTTAGATTGCTGAAGAACAGAGCAAAAGAGGTCCTAACAGAGTCCCTAG
 AGAGCATTTCTGTCCGGGTAATAAAGCCAGAGGCTGCAGGACCATCCGCCAGTGTGGATCTGGACAG
 CTCCTACTTAGTACTCTAAGTAACACCAGCAAAGAGCTGTCCATGGGTGACAAGGAGGCCTTCCCCTG
 TCTGAGACCTCCTCAAGCTCCTGGCTCCTCAGATGACCTGTCCAGTGACTCAGAGGGCCACATTGCAG
 AAGAGTCTGCCCTGTTGTACCCAGCAGGCGTTTCAGAAGGAGAGCCAACACCCTGAGTCAATTTCCAGT
 AGAGTGCCTGCGCCTCCAGAACCTGCCAGAGCTCTCCAGGGTCTCTCAAAGGAAACTCATGCGGTAC
 CACTCCGTGAGCAGAGACGCCTCATGAACGCAAGGACTTTGAATCAAAGCAAACCACCTGGGTGACA



[View online >](#)

CAGATGGGACCCCGTGAAGACCCGGCGCACTCGTGGAGACAGCAGATATTCCTTCGAGTGGCCACTCC
 ACAGAAGGCTTGTGACTCCCGAGCAGATATGAAGATTATCCGAGCTGGGAGAGCTCCCTCCACGCTCC
 CCTTTAGAACCGGTGTGTGAGGACGGCCATTTGGCCAGTACAGGAAGAAAAGAGGAAGACGTCACGCG
 AGCTTCGAGAGCTGTGAAAAAGGCCATCTTGCAGCAGATCCTGCTGCTCAGGATGGAGAAGGAGAATCA
 GAAGCTACAAGCCTCTGAAAACGATTTGCTGAACAAACGCCTCAAGCTTGACTATGAAGAAATCACTCCG
 TGTCTTAAAGAAGTCACTACAGTGTGGGAAAAGATGCTTAGCACTCCAGGAAGATCCAAAATTAAGTTTG
 ACATGGAAAAAGTGCACCTCAGCTGTTGGCAAGGTGTGCCACGTATCACCAGGTGAGATCTGGAATTTG
 TCTAGCTGAGCAGTTCCACCTTAAACACCCATTTCTAGTAAACAGCAGCCAAAGGACGTGCCCTACAAA
 GAGCTCCTGAAGAAGCTGACCTCGCAGCAGCACGCCATTCTCATCGACCTCGGGCGAACCTTTTCCAACAC
 ATCCATACTTCTGCCCCAGCTTGGAGCAGGTCACTGTCACTTTACAACATTCTGAAGGCTACTCGCT
 TCTGGACCAGGAGGTTGGATACTGCAAGGTCTCAGCTTGTGGCAGGCATTTTGCTTTCACATGAGT
 GAGGAAGAGGCGTTCAAGATGCTCAAGTTCCTGATGTTTGACATGGGGCTGCGGAAACAGTATCGGCCAG
 ACATGATTATTTGCAGATCCAGATGTACCAGTGTACGGCTCCTCCACGATTACCACCGAGACCTCTA
 CAACCACCTGGAAGAGCAGAGATCGGCCCCAGCCTCTACGCGGCTCCCTGGTTTCTCACTGTGTTCCGC
 TCACAGTCCCCTCGGCTTTGTAGCCAGAGTCTTTGATATGATCTTCTTCAGGGATCAGAGGTATAT
 TTAAGTAGCTTAAAGTCTTTGGGGAGCCATAAGCCCTTGATTCTACAGCATGAGAACCTGGAACCAT
 AGTGGACTTCATAAAGAACACACTCCCCAACCTGGGCCTGGTGCAGATGGAGAAGACCATCAGTCAGGTG
 TTTGAGATGGACATCGCCAAGCAGCTCCAGGCCTATGAGGTGAGTACCAGTGTCCAGGAGGAGCTTA
 TTGAGTCTCGCCTCTCAGTGACAACCAAGAATGGAGAAATGGAGAAAACCAACAGCAGCTTGCAGCA
 ACAGAACCTTGACCTCTGGAGCAGTTGCAGGTGGCAAATGCTAGGATCCAAAGCCTTGAAGCCACGGTA
 GAGAACTTCTTACCAGCAGAGTAAGCTGAAGCAGGCTGCGCTGACCCTGGAGGTGGAGCGCTCCGCC
 TGCTGCAGATGGTGGAGGAGCTGCGGAGGCAAAGCGCCCGCCAGCACTCCAGAGCCAGACTGCACCCA
 GCTGGAGCCACAGGCGAT

ACGCGTACGCGGCGCTCGAGCAGAACTCATCTCAGAAGAGGATCTGGCAGCAATGATATCCTGGATT
 ACAAGGATGACGACGATAAGGTTTAA

Protein Sequence:

>MR231504 representing NM_001289514
 Red=Cloning site Green=Tags(s)

MSPLFSWVAKVPEIISSIRQAGKIARQEELRCPSEFDDTFAKKFEVLFGRVTVAHKKAPPALIDECIEK
 FNHVSCGRRDWEAPTQGPSAPGPRMRKSFSPGLRSLAFRKEFQDASLRSTFSSFDNDIENHLIGGH
 NVVQPTDMEENRMLFTIGQSEVYLISPDTKKIALEKNFKEISFCSQGIRHVDHFGFICRECSGGGSGGF
 HFVICYVFQCTNEALVDEIMMTLKQAFVAAVQQTAKAPAQLCEGCPLQGLHKLKERIEGMNSKTKLELQ
 KHLTTLTNQEQATIFEEVQKLRPRNEQRENELIISFLRCLYEEKQKEHSHTGEPKQTLQVAENIGSDLP
 PSASRFRLLDSLKNRAKRSLTESLESILSRGNKARGLQDHSASVDLDSSTSTLSNTSKELSMGDKEAFPV
 SETSFKLLGSSDDLSSDSEGHIAEESALLSPQQAFRRRANTLSHFVVECPAPPEPAQSSPGVSQRKLMRY
 HSVSTETPHERKDFESKANHLGDTDGPVKTRRHSWRQQIFLRVATPQKADSPSRYEDYSELGELPPRS
 PLEPVCEGDFPGPVQEEKRKTSRELRELWKKAILQQIILLRMEKENQKLQASENDLLNKRLKLDYEEITP
 CLKEVTVWEKMLSTPGRSRIKFDMEKVHSAVGGVPRHHRGEIWKFLAEQFHLKHPFSPKQPPKDPVPYK
 ELLKLLTSQQHAILIDLGRTPHPYFSAQLGAGQLSLYNILKAYSLLDQEVGYCQGLSFVAGILLHMS
 EEEAFKMLKFLMFDMLRKQYRPDMIILQIQMYQLSRLLDHYHRDLYNHLEEHEIGPSLYAAPWFLTVFA
 SQFPLGFVARVDFMIFLQGVSEVIFKVALSLLGSHKPLILQHENLETIVDFIKNTLPNLGLVQMEKTI
 SQVFEMDIAKQLQAYEVEYHVLQEELIESSPLSDNQRMEKLEKTNSSLRKQNLDLLEQLQVANARIQSLEATV
 EKLLTSESCLKQAAALTEVERSALLQMV EELRRQSARPSPEPDCTQLEPTGD

TRTRPLEQKLISEEDLAANDILDYKDDDDKV

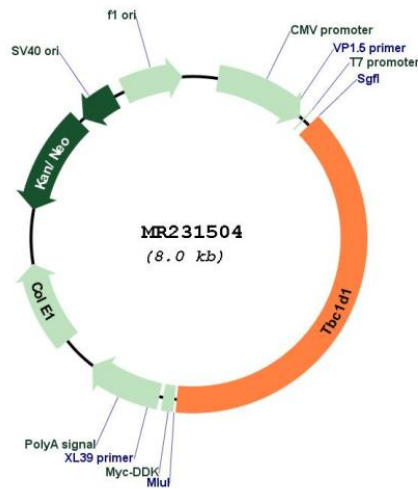
Restriction Sites:

Sgfl-MluI

Cloning Scheme:



Plasmid Map:



ACCN: NM_001289514

ORF Size: 3099 bp

OTI Disclaimer: The molecular sequence of this clone aligns with the gene accession number as a point of reference only. However, individual transcript sequences of the same gene can differ through naturally occurring variations (e.g. polymorphisms), each with its own valid existence. This clone is substantially in agreement with the reference, but a complete review of all prevailing variants is recommended prior to use. [More info](#)

OTI Annotation:	This clone was engineered to express the complete ORF with an expression tag. Expression varies depending on the nature of the gene.
Components:	The ORF clone is ion-exchange column purified and shipped in a 2D barcoded Matrix tube containing 10ug of transfection-ready, dried plasmid DNA (reconstitute with 100 ul of water).
Reconstitution Method:	<ol style="list-style-type: none">1. Centrifuge at 5,000xg for 5min.2. Carefully open the tube and add 100ul of sterile water to dissolve the DNA.3. Close the tube and incubate for 10 minutes at room temperature.4. Briefly vortex the tube and then do a quick spin (less than 5000xg) to concentrate the liquid at the bottom.5. Store the suspended plasmid at -20°C. The DNA is stable for at least one year from date of shipping when stored at -20°C.
RefSeq:	<u>NM_001289514.1, NP_001276443.1</u>
RefSeq Size:	4802 bp
RefSeq ORF:	3102 bp
Locus ID:	57915
Cytogenetics:	5 32.8 cM
MW:	117.7 kDa
Gene Summary:	May act as a GTPase-activating protein for Rab family protein(s). May play a role in the cell cycle and differentiation of various tissues. Involved in the trafficking and translocation of GLUT4-containing vesicles and insulin-stimulated glucose uptake into cells.[UniProtKB/Swiss-Prot Function]