

Product datasheet for MR231480

Lig3 (NM_001291246) Mouse Tagged ORF Clone

Product data:

Product Type:	Expression Plasmids
Product Name:	Lig3 (NM_001291246) Mouse Tagged ORF Clone
Tag:	Myc-DDK
Symbol:	Lig3
Synonyms:	D11Wsu78e
Vector:	pCMV6-Entry (PS100001)
E. coli Selection:	Kanamycin (25 ug/mL)
Cell Selection:	Neomycin
ORF Nucleotide Sequence:	>MR231480 representing NM_001291246 Red=Cloning site Blue=ORF Green=Tags(s)

TTTTGTAATACGACTCACTATAGGGCGGCCGGAATTCGTCGACTGGATCCGGTACCGAGGAGATCTGCC
GCC**CGGATCGCC**

ATGACTTTGGCTTCAAGATCCTCTTCCCGAGAAACCTTTGTGCCCTTGGCAGAAAAGAACTGTGCCTGT
TCCAGAACAGAAATCGCTGGGCTGCCATAAGTCAGTTCAGCCAGTGGTCGAAACAAATCTCCTCGGTGG
GTGCTGCCTTCTCCAGAGAAGAAAGCCTGTCTAGCTCTCCAGAGAGTCACTAAGACCAGTGCCACC
CACCTTACTTTTGCCAGGGTTCGATGTGGGACTCTGTACTGGCCCTGTGCGATGGCAGAGCAGCGGT
TCTGTGTGGACTATGCCAAGCGGGCACAGCTGGATGCAAGAAATGCAAGGAGAAGATTGTAAGGGCGT
GTGCCGATTGGCAAAGTGGTGCCTAACCCCTTCTCAGAGTCTGGGGGTGATATGAAAGAGTGGTACCAC
ATTAAGTGCATGTTTGAGAACTGGAACGGGCTCGGGCCACCACAAGAAAATTGAAGACCTCACAGAGC
TGGAAGGCTGGGAAGAGCTGGAAGATAACGAAAAGGAACAGATAAGCCAGCATATTGCAGACCTGTCTTC
TAAGGCAGCTGCCACACCTAAGAAGAAAGCTGCTGTCCAGGCTAAGCTGACAACCACTGGCCAGGTGACA
TCTCCAGTGAAAGGTGCTTCGTTTATTACCAGTACCAATCCTCGGAAGTTCCTGGCTTTTCAGCAAAAC
CCAACAACCTTGAGCAAGCCCCCTCAAGCCCTGCTCCTGGAACGAGTCTGTCTGCAAGTAAATGTGACCC
TAAGCACAAAGATTGCTGTACGAGAGTTCCGGAAGCTGTGCGCCATGGTGGCTGAAAATCCTAGCTAT
AACACCAAGACCCAGATCATCCATGACTTCTTGCAGAAAGGCTCCACAGGAGATGGCTTTACGGTGATG
TGTACCTGACAGTTAAGCTGCTGCTGCCTGGTGTCAAGAGTGTTTACAACCTGAATGATAAGCAGAT
TGTAAAACCTTTTAGCCGAATTTTAACTGCAACCCAGATGATATGGCCCGGGACCTAGAACAGGGTGAC
GTGTCAGAGACGATCAGAATCTTCTTTGAGCAGAGCAAGTCTTTCCCCCAGCTGCCAAAAGCCTCTCA
CCATTAGGAAGTGGATGCCTTCTCCTGCACCTCCTCAAGCTCACAAAGAGGATGAGCAGCAGCAGGC
CCTGCAGGACATAGCCTCCCGGTGTACAGCCAATGACCTTAAGTGCATTATTCGGCTGATCAAACATGAT
CTGAAGATGAACTCGGGTGCAAAACACGTGTTAGATGCCCTTGACCCCAATGCTTATGAAGCCTTCAAAG
CATCGCGCAACCTGCAGGATGTGGTGGAGCGAGTCTTACAATGAGCAGGAGGTGGAGAAGGACCCAGG
CCGGCGACGGGCTCTGAGGGTCCAGGCCTCACTGATGACGCTGTGCAGCCCATGCTGGCTGAGGCTGC
AAATCCATTGAATATGCAATGAAGAAGTGTCCCAATGGCATGTTCTCTGAGATCAAGTACGATGGTGGAGC



[View online »](#)

GAGTCCAGGTGCATAAGAAGGGGGACCACTTCAGCTACTTCAGCCGCAGTCTCAAGCCTGTCTGCCTCA
 CAAGGTGGCCCACTTCAAGGACTATATACCCAAAGCTTTTCTGGGGGTCAAAGCATGATCTTGGATTCC
 GAGGTACTCTGATTGACAACAACAGGCAAACCACTGCCCTTTGGGACTCTGGGAGTGACAAGAAAAG
 CTGCTTTCCAGGATGCTAATGTCTGCCTGTTTGTGTTTGGATTGTATCTACTTTAATGATGTCAGCTTGT
 GGACAGGCCTCTCTGTGAGCGACGGAAGTTTCTCATGACAACATGGTTGAAATCCGTAAACCGGATCATG
 TTCTCAGAAATGAAGCAAGTACAAAAGCTTCAGACCTGGCTGACATGATAAACCAGGATGATCCGAGAGG
 GCTTGGAAAGGTTGGTGCTAAAGGATGTGAAGGTACATATGAGCCTGGGAAGCGGCACTGGCTGAAAGT
 TAAGAAAAGATTATTTGAATGAGGGGGCCATGGCTGATACAGCTGATCTGGTGGTTCTTGGGCCTTCTAT
 GGGCAAGGGAGCAAAGCGGAATGATGTCCATCTTCTCATGGGCTGCTATGACCCTGACAGCCAAAAGT
 GGTGCACTGTTACAAAATGTGCTGGAGGCCATGATGATGCCACACTTGCCCGCTGCAGAAAAGAGCTGGT
 TATGGTGAAGATCAGCAAGGATCCTAGTAAGATACCCAGCTGGCTGAAGATCAACAAGATCTATTATCCT
 GACTTTATCGTCCAGACCCAAAGAAAGCTGCTGTGTGGGAGATCACAGGGGCAGAAATCTCCAGATCTG
 AGGCACACACTGCTGATGGCATCTCCATCCGATTTCTCGATGCACCCGAATCCGGGACGACAAGGACTG
 GAAATCTGCCACTAACCTCCCCAACTCAAGGAAGTGTACCAGCTGTCCAAGACAAGGCAGACTTTGCT
 GTGGTGGCTGGAGATGAGGCAAGCCCACTACTGGAGGCAGCAGTGGCGAGAACGAGGGCACTGCTGGGT
 CTGCTGGGCCCTGCAAGGGCCCCCAAGTAAAGTCTCTGCCAGTGCCAAGACCACCGAAGAGAAGCTCAA
 TAGCCCCAGTAGCAGAGGTGGCATCAAACCGATTCCAAGCATTCCCCATGAAACCAGGAGAGAAGCTG
 GCTGTGAAGTCTTCTCCAGTCAAAGTGGGAATGAAGAGGAAAAGCTACTGATGAGACCCCATGCCTGAAAA
 AGGTACTGTTGGATGCTTCACTGGGGTGGCGCTACTTGCACCTTCTACACCAGACTTCAAACGTCT
 CAAACGCTACTTTGTGGCATTGACGGGGACCTGGTACAGGAATTTGACATGGGCTCAGCCACACATGTG
 CTAGGTAACAGGGAAAAGAACTGATGCCAGTTGGTCTCTCAGAGTGGATTTGGGCATGTATCCGGA
 AACGGAGGCTGATAGTCCCTGC

ACGCGTACGCGGCCGCTCGAGCAGAAACTCATCTCAGAAGAGGATCTGGCAGCAAATGATATCCTGGATT
 ACAAGGATGACGACGATAGGTTTAA

Protein Sequence:

>MR231480 representing NM_001291246
 Red=Cloning site Green=Tags(s)

MTLAFKILFPRNLCALGRKELCLFPEQNRWAAISQFSQWSETNLLGGCCLLQRRKPVLLALQRGHLRPRAT
 HLTFFWPGSHVGLCTGPCAMAEQRFVYAKRGTAGCKKCKEKIVKGVCRIGKVVPNPFSESGDMKEWYH
 IKCMFEKLERARATTKKIEDLTELEGWEELEDNEKEQISQHIADLSSKAAATPKKKAQAKLTTTGQVT
 SPVKGASFITSTNPRKFSGFSKPNNSEQAPSSPAPGTSLSASKCDPKHKDCLLREFRKLCAVMAENPSY
 NTKTQIIHDFLQKSTGDGFHGDVYLVKLLLPVIVKSVYLNLDKQIVKLFSTRIFNCNPDMDARDLEQGD
 VSETIRIFFEQSKSFPPAAKSLTTIQEVDAFLHLHLTKEDEQQALQDIASRCTANDLKCIRLIKHD
 LKMNSGAKHVLDAIDPNAYEAFKASRNLDVVERVLHNEQEVEKDPGRRRALRVQASLMTPVQPMLAEAC
 KSIEYAMKKCPNGMFSEIKYDGERVQVHKKGDHFSYFSRSLKPVLPKVAHFKDYIPKAFPGGQSMILDS
 EVLLIDNNTGKPLPFGTLGVHKKAAFQDANVCLFVFDCLYFNDVSLMDRPLCERRKFLHDNMVEIRNRIM
 FSEMKVTKASDLADMINRVIREGLEGLVLKDVKGTYEPGKRHWLVKVKDYLVNEGAMADTADLVVLGAFY
 GQGSKGGMMSIFLMGCYDPDSQKWCTVTKCAGGHDDATLARKLQKELVMVKISKDPSKIPSWLKINKIYYP
 DFIVPDPKKAAVWEITGAEFSRSEAHADGIRIFPRCTRIRDDKDWKSATNLPQLKELYLQSKDKADFA
 VVAGDEASPTTGGSSGENEGTAGSAGPCKGPPSKSSASAKTTEQKLNSSSRGGIKPIPKHSPMKPGEKL
 AVKSSPVKVMKRKATDETPCLKKVLVDVFTGVRLYLPSTPDFKRLKRYFVAFDGLVQEFDMGSATHV
 LGNREKNTDAQLVSSEWIWACIRKRRLIAPC

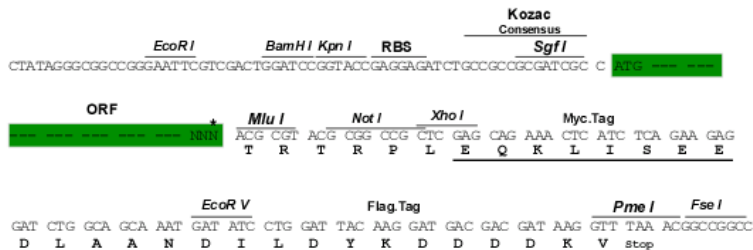
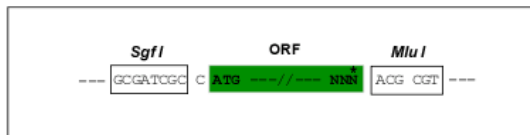
TRTRPLEQKLISEEDLAANDILDYKDDDDKV

Restriction Sites:

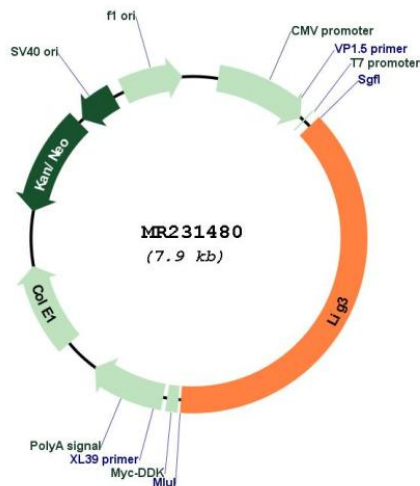
Sgfl-MluI

Cloning Scheme:

Cloning sites used for ORF Shuttling:



* The last codon before the Stop codon of the ORF

Plasmid Map:

ACCN: NM_001291246

ORF Size: 3033 bp

OTI Disclaimer: The molecular sequence of this clone aligns with the gene accession number as a point of reference only. However, individual transcript sequences of the same gene can differ through naturally occurring variations (e.g. polymorphisms), each with its own valid existence. This clone is substantially in agreement with the reference, but a complete review of all prevailing variants is recommended prior to use. [More info](#)

OTI Annotation:	This clone was engineered to express the complete ORF with an expression tag. Expression varies depending on the nature of the gene.
Components:	The ORF clone is ion-exchange column purified and shipped in a 2D barcoded Matrix tube containing 10ug of transfection-ready, dried plasmid DNA (reconstitute with 100 ul of water).
Reconstitution Method:	<ol style="list-style-type: none">1. Centrifuge at 5,000xg for 5min.2. Carefully open the tube and add 100ul of sterile water to dissolve the DNA.3. Close the tube and incubate for 10 minutes at room temperature.4. Briefly vortex the tube and then do a quick spin (less than 5000xg) to concentrate the liquid at the bottom.5. Store the suspended plasmid at -20°C. The DNA is stable for at least one year from date of shipping when stored at -20°C.
RefSeq:	<u>NM_001291246.1</u> , <u>NP_001278175.1</u>
RefSeq Size:	5981 bp
RefSeq ORF:	3036 bp
Locus ID:	16882
Cytogenetics:	11 50.23 cM
MW:	113.2 kDa