

Product datasheet for **MR231371**

Sez6l2 (NM_001252566) Mouse Tagged ORF Clone

Product data:

Product Type:	Expression Plasmids
Product Name:	Sez6l2 (NM_001252566) Mouse Tagged ORF Clone
Tag:	Myc-DDK
Symbol:	Sez6l2
Synonyms:	AI835913; AW121566; BSRP-A; Psk1
Vector:	pCMV6-Entry (PS100001)
E. coli Selection:	Kanamycin (25 ug/mL)
Cell Selection:	Neomycin



[View online »](#)

ORF Nucleotide Sequence:

>MR231371 representing NM_001252566
 Red=Cloning site Blue=ORF Green=Tags(s)

TTTTGTAATACGACTCACTATAGGGCGGCCGGGAATTCGTCGACTGGATCCGGTACCGAGGAGATCTGCC
 GCC**CGCATCGCC**

ATGGGGACTCCCAAGGCCAGCACCCGCCGCTTCCAGCTGCTGCTCCTAATTCTGCTGAGCTGTGCCT
 GGATTGAGGGTCTGCCCCGAAGGAGGATGAGATGATGCCAGAGCCTGGAAGTGAGACTCCACAGTGGC
 CTCTGAGGACCTGGCTGAGCTGCTCCATGGGGCTTTGCTGCGGAAGGGCCAGAGATCGGCTTCTTGCCG
 GGATCTGACCCAGACCCACACTAGCCACCCCTCCAGCCGGCCAGACTCTTGACGACCTTCCCTGCCAC
 GTGCCACTGAGCCAGGGACAGGGCCTCTGACGACAGCTGTACCCCAAGGGAGTCAGGGGGCAGGCC
 CACCGCGCAGAGCTGCTGACCCACCCCTGAACTACAGCCCCGCCCGCTGGCCCCGCTCCCA
 GTCCACCCCTCAGGCCGTAGGGAGGAGAGGAAACCACCACCACCATCATCACCACAACAAGTGTCA
 CCACCACTGTACCAGCCAGTTCTGTGCAATAACAACATCTCGAGGGCGAAGGGTTTGTGGAGTCTCC
 GGACTTGGGGAGCACTGCCAGCCGCTCCGTGGAGCTCCTAGATTGCACCTACAGCATCCATGTCTACCT
 GGTATGGCATTGAGATTGAGTGCAGACTCAACCTGTCTCAGGAGGAAGAATTCTGGTGTGGCCG
 GTGGGGTTCTCCAGGCCTGGCCCCAGACTCCTGGCCAATTCCTCCATGCTGGGAGAAGGACAAGTGT
 GCGGAGCCCAACAACCGGCTGCTCCTGCATTTCCAGAGTCTCGAGTCCCAAGGGGAATGGCTTCAGG
 ATTCACTATCAGGCATACCTTCTGAGCTGCGGCTTCCACCCGGCCAGCCACGGGGATGTGAGCGTGA
 CAGACTTGATCCTGGGGCACTGCCACCTTCCACTGTGACTCAGGATACCAGCTACAGGGTGAGGAGAC
 CCTCATTTGCCTCAATGGTACCCGGCCAGCCTGGACTGGTGAACCCCTAGCTGTACAGCATCTTGTGGT
 GGCACCATCCACAATGCCACACTGGGTGCAATTGTATCCCCTGAGCCTGGGGAGCTCAGGGGCCAAC
 TCACCTGCCGCTGGGTCAATTGAAGCGCCGAGGGACCCGGCTTACCTACACTTTGAGAGAGTCACT
 GGATGAGGACAATGACCGGCTGATGGTGCCTCAGGGGAAGCCCTGTCCCCTGTGATTTACGACTCT
 GACATGGATGATGCCCTGAACGCGTCTCATCAGTATGCCAGTCCCTCTACGTAGAAGTGTCTTCAG
 AGACACCAGCCAACCCCTGCTGCTCAGCCTCCGATTTGAAGCCTTTGAGGAGGACCGCTGCTTCCCCC
 GTTCTGGCTCACGGCAATGTGACCACTACAGATCCTGAGTTCCACCCAGGAGCACTGGCCACCTTCTCA
 TGCCTCCAGGATATGCTCTGGAGCCACCAGGCCCAATGCTATCGAATGTGTGGATCCACCGAAC
 CCCACTGGAACGACACAGAGCCAGCCTGCAAGGCCATGTGTGGAGGAGAGCTGTCTGAGCCAGCTGGTGT
 GGTACTCTCTCCGACTGGCCCCAGAGTTACAGCCCTGGCCAAGACTGCGTGTGGGGCTGCACGTCCAG
 GAAGAGAAGCGCATCTTGTCCAAGTTGAAATCTTGAATGTTCCGGAAGGGGATATGCTAACACTGTTCC
 ACGGGGACGGTCCGAGCGCTCGAGTCTGGCCAGCTGCGAGGACCTCAGCCGCGCCGCCCTCCTCTC
 CTCTGGACCTGATCTCACTCTGCAGTTTCAAGCACCCCTGGTCCCCAAATCCGGGCTAGGCCAGGGT
 TTCGTGTACATTTCAAAGAGTCCCGAGAAACGATACGTGCCCGGAGCTACCACCACCTGAGTGGGGCT
 GGAGGACAGCATCCACGGGGACCTTACCGGGGTACAGTGTCACTATCAATGCGAGCCTGGCTATGA
 ACTACTGGGATCAGACATCCTCACTTGCCAATGGGACCTGTCTGGAGCGCGGCCACCTGCCTGCCAA
 AAGATCATGACTTGTGCTGACCTGGCGAGATACCAATGGCCATCGGACTGCCTCAGATGCTGGTTTCC
 CTGTGGGCTCCCACGTCCAGTATCGCTGTCTGCCAGGTACAGCCTGGAAGGAGCAGCTGTGCTCACCTG
 CTACAGCCGGGACACAGGCACACCAAGTGGAGTATCGGGTCCCCAAATGCGCCTAAAGTACGAGCCG
 TGCTGAACCCCGGTGTTCTGAGAATGGTTACCAAACTCTGTACAAGCATCACTACCAAGCGGGCGAGT
 CGCTACGTTCTTCTGCTACGAGGGCTTTGAGCTCATCGCGAGGTCACCATCACATGTGTACCCGGTCA
 CCCCTCCAGTGGACCAGCCAGCCCACTCTGCAAAGTACCCAGACTACAGACCCATCAGGCAGCTG
 GAGGGTGGTAATCTCGTTTGGCCATCCTGTTGCCCTGGGCTTGGTCATTGTCTTGGCATTGGCGTTT
 ACATATACTACACTAAGCTACAAGGAAATCCCTCTTGGCTTCTCGGTTCTCACTCTTACAGTCCCAT
 TACGGTGGAGTCAGACTCAGCAACCCACTGTATGAAGCTGGGGATACGAGGGAGTATGAAGTTTCCATC

ACGCGTACGCGGCCGCTCGAGCAGAACTCATCTCAGAAGAGGATCTGGCAGCAAATGATATCTGGATT
 ACAAGGATGACGACGATAAGGTTTAA

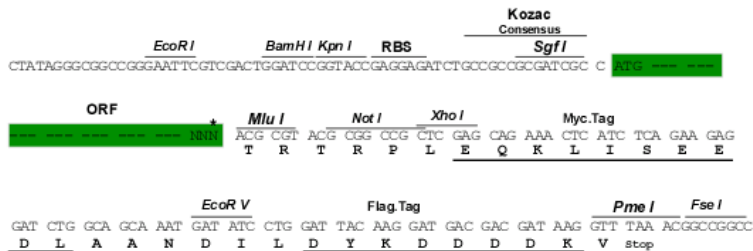
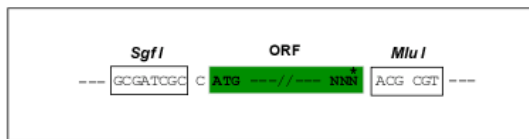
Protein Sequence: >MR231371 representing NM_001252566
 Red=Cloning site Green=Tags(s)

MGTPKAQHPPPSQLLLLILLSCAWIEGLPLKEDEMPEPGSETPTVASEDLAELLHGALLRKGPEIGFLP
 GSDPDPTLATPPAGQTLAAPSLPRATEPGTGPLTTAVTPKGVRGAGPTAPELLTPPPGTTAPPPGPASP
 VPPLRPEGEEETTTTIIITTTTITTTVSPVLCNNNISEGEGFVESPDLGSTASRSVELLDCTYSIHVYP
 GYGIEIQVQTLNLSQEEELLVLAGGSGPLAPRLLANSSMLGEGQVLRSPNRRLLHFQSPRVPRGNGFR
 IHYQAYLLSCGFPPRPAHGDVSVTDLHPGGTATFHCDSDGYQLQGEETLICLNTRPAWTGEPSSCTASCG
 GTIHNATLGRIVSPEPGGAAGPNLTCRWVIEAAEGRRLHLHFVSLDEDNDRMLMVRSGGSPLSPVIYDS
 DMDDVPERGLISDAQSLYVELLSETPANPLLLSLRFEAFEEDRCFPPFLAHGNVTTDPEFHGALATFS
 CLPGYALEPPGPPNAIECVDPTEPHWNDTEPACKAMCGGELSEPAGVVLSPDWPQSYSPGQDCVWGLHVQ
 EEKRILLQVEILNVREGDMLTDFDGDGPSARVLAQLRGPQPRRLLSSGPDLTQFQAPPGPPNPLGQG
 FVLHFKEVPRNDTCPELPPPEWGWRTASHGDLIRGTVLTYQCEPGYELLGSDILTCQWDLSWAAPPACQ
 KIMTCADPGEITNGHRTASDAGFPVGSVYRCLPGYSLEGAAVLTCYSRDTGTPKWSDRVPKALKYEP
 CLNPGVPENGYQTLTKHHYQAGESLRFFCYEGFELIGEVTITCVPGHPSQWTSQPPLCKVTQTTDPSRQL
 EGGNLALAILLPLGLVIVLGIGVYIYYTKLQKSLFGFSGSHSYSPITVESDFSNPLYEAGDTREYEVSI
 TRTRPLEQKLISEEDLAANDILDYKDDDDKV

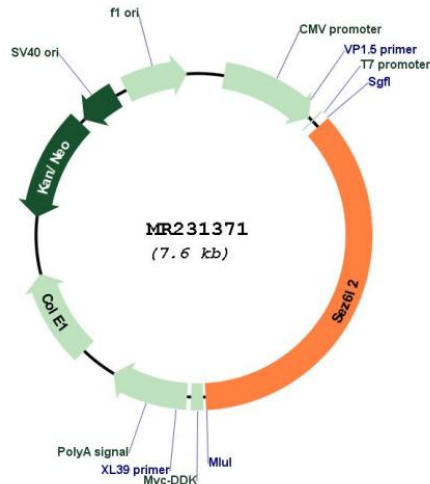
Restriction Sites:
 Cloning Scheme:

Sgfl-MluI

Cloning sites used for ORF Shuttling:



* The last codon before the Stop codon of the ORF

Plasmid Map:


ACCN: NM_001252566

ORF Size: 2730 bp

OTI Disclaimer: The molecular sequence of this clone aligns with the gene accession number as a point of reference only. However, individual transcript sequences of the same gene can differ through naturally occurring variations (e.g. polymorphisms), each with its own valid existence. This clone is substantially in agreement with the reference, but a complete review of all prevailing variants is recommended prior to use. [More info](#)

OTI Annotation: This clone was engineered to express the complete ORF with an expression tag. Expression varies depending on the nature of the gene.

Components: The ORF clone is ion-exchange column purified and shipped in a 2D barcoded Matrix tube containing 10ug of transfection-ready, dried plasmid DNA (reconstitute with 100 ul of water).

Reconstitution Method:

1. Centrifuge at 5,000xg for 5min.
2. Carefully open the tube and add 100ul of sterile water to dissolve the DNA.
3. Close the tube and incubate for 10 minutes at room temperature.
4. Briefly vortex the tube and then do a quick spin (less than 5000xg) to concentrate the liquid at the bottom.
5. Store the suspended plasmid at -20°C. The DNA is stable for at least one year from date of shipping when stored at -20°C.

RefSeq: [NM_001252566.1](#), [NP_001239495.1](#)

RefSeq Size: 3773 bp

RefSeq ORF: 2733 bp

Locus ID: 233878

UniProt ID: [Q4V9Z5](#)

Cytogenetics: 7 F3

MW: 98 kDa

Gene Summary: May contribute to specialized endoplasmic reticulum functions in neurons.[UniProtKB/Swiss-Prot Function]