

## Product datasheet for **MR231329**

### Arvcf (NM\_001272032) Mouse Tagged ORF Clone

#### Product data:

Product Type:	Expression Plasmids
Product Name:	Arvcf (NM_001272032) Mouse Tagged ORF Clone
Tag:	Myc-DDK
Symbol:	Arvcf
Vector:	pCMV6-Entry (PS100001)
E. coli Selection:	Kanamycin (25 ug/mL)
Cell Selection:	Neomycin



[View online »](#)

**ORF Nucleotide  
Sequence:**

>MR231329 representing NM\_001272032  
 Red=Cloning site Blue=ORF Green=Tags(s)

TTTTGTAATACGACTCACTATAGGGCGGCCGGGAATTCGTCGACTGGATCCGGTACCGAGGAGATCTGCC  
 GCC**CGGATCGCC**

ATGCCGGCGAACTCAGACAGGAGCAGAGCCCGGGTAGCCAGGCATCGCTGGCCACGATGCCAGAGGCAC  
 CCGAGGTAAGTGGAGGAGACAGTACTGTGGAGGAAGACCCTGGCACCCACCTCTCACGTGCCATCGT  
 CACATCAGAAGATGGTACAACCCGGCGGACTGAGACTAAGGTCACTAAGACGGTCAAGACTGTGACCACA  
 AGGACAGTACGCCAGGTGCCTTTGGGCCAGATGGACTCCCTTGTGGACGGCGGCCCTCCACTTGGCT  
 CTTTTGCTGACGGGCCCTGGACCGCATTACCTACTTCGTGGTGGTGGTCCAGCAGCCACACTCTC  
 CCGAACCTACCACAGCAGTGGAGGTGGCTTTCCCGATGGCCCGAGTCCCGTGATATCCAAGCTATGGC  
 AGCTTGTCCCGAGGGCTCGGGTACGGCCACCAGTACTGGCTCCTGGGCCAGGACCTGGTGATGGCT  
 GTTTCACACTGCCTGGCCGCCGAGAAGCCTTCCCATGGGCTCTGAATCCGGACCACCAAGCGGCCGCTC  
 TCTGCCTGAGCATTCCAAGCTGAACCATATGGCTGGAGGATGATACACGGAGCCTGGCTGCGGATGAT  
 GAGGGTGGCCCCGACCTGGAGCCTGACTATAGCACGGCAACCCGAGAAGACCTGAGTACGGCGGGGCC  
 TTCGTGCCAGGGCCTTTGAAGACACAGCAGATGATGCTGGTGGAGCTGATAGAAGAGCGTCCCCATTTC  
 AGCAGCAACAGCCCTCTGGCCAGCCTGAGAGGGCAGCCTGGGCAGCTTGGACCGAGTAGTGCGGCGC  
 TCACCTTCAGTGGATAGCACCCGCAAGGAGCCACGCTGGCGGGACCCCGAGCTGCCAGAGGTGTTGGCCA  
 TGCTGCGGCACCTGTGGACCCTGTGAAAGCCAATGCTGCAGCCTACCTGCAGCAGCTCTGCTTTGAGAA  
 CGAGGGTATTAAGCGCGAGTGGCGCAGCTGCGTGGGCTCCCCGTGTTGGCATTACTAGATCACCT  
 CGGGCTGAGGTGGCGCCGGCCCTGTGGGCACTGCGCAACCTCCTATGGCCGGGACTGACAACA  
 AGGCCGCCATCCGGGACTGCGGGGGCTGCCAGCCTGGTGGCCCTACTGCGGGCGGCCCTGACAATGA  
 GTCCCGTGGAGCTGGTCACTGGCACACTTGGAACTGTATCCTACGAGCCCTGAAGATGGTCATCATT  
 GACCACGGCTTACAGACTCTGACCATGAGGTCATCGTGGCCATTCCGGCTGGGAGCGAGAGCCTAACG  
 AAGACTCGAAGCCCGGGATGCCGAGTGGACAACAGTCTTCAAGAACACATCAGGCTGCCTGAGGAATGT  
 GAGCTCAGATGGTGCAGAGGCCCGCGGCGACTCCGTGAGTGCAGAGGGCTGGTGGACGCTCTCCTACAT  
 GCCCTGCAGTCACTGTGGCAGGAAAGACACAGATAATAAGTCAGTAGAGAACTGTGTGTGCATCATGC  
 GGAACCTGTCCTACCACGTGCACAAAGAAGTTCAGGGGCTGACAGGTACCAGGAGCGAGCCTGGGAT  
 CCCGGGCAGCACAACTCCAGCGACGGAGGAAGGATGACGCCAGCTGCTTTGGTGGCAAGAAAGCAAAA  
 GGAAGAAGGATGCAGAGATGGACCGGAACTTTGACACTGGACCTGCCTAACGAACGGAGGCTGCAA  
 AAGGCTTCGAGCTGCTGTACCAGCCGGAGGTGGTACGTCTACCTCTACTCCTTACGGAGAGCCGGAA  
 CTTCAACACCCTGGAAGCTGCAGCCGGTCCCTGCAAAACCTCAGTGTGGCAACTGGACGTGGGCCACG  
 TACATCCGTGCCACAGTGCAGCAAGGAACGTGGGCTGCCAGTACTGGTGGAACTGCTACAGTCTGAGACCG  
 ACAAGGTGGTGGCGCTGTAGCCATCGCGCTGCCCAACCTCTACTAGACCAGCGGAACAAAGACCTCAT  
 CGGGAGCTATGCCATGACAGAGCTGGTTCGGAATGTTCCGAATGCACAGGCTCCCGCTCACCCAGTGCC  
 CACCTGGAGGAGGATACTGTGGTTCGGTGTCTCAACACCATCCATGAGATCGTGTCCGACAGCCTGGACA  
 ATGCTCGCTCCCTCCTGCAGGCCGTGGTGTGCCTGCCCTGGTAGCACTTGTGGCCTCCAGCCAGTCAGT  
 GCGGGAGGCCAAGGCAGCATCACAGTGTACAGACTGTATGGAGCTACAAGGAGCTGCGTGGAGCCCTG  
 CAGAGGGATGGCTGGACGAAGTACGCTTCCAGTCTGTAGCACTGCCAAAGGACCCAAAGGACACCAA  
 GTTCTGGCGGCTTTGATGACAGCACACTGCCACTGGTAGACAAGAGCCTTGATGGGGAGAAGTCAAACAC  
 CCGGGATGTATCCCATGGATACCCTTGGTCCAGATGGTTACGCCACAGTTGACCCGAGGGAGAGGAGG  
 ACACTGGCAGTACTCCACAGGGGACACCTCTGAGAAAGAACTATTGAGACCCGATCCTGGCAGGAAGG  
 CCCCTCCGCTGGGCCAGCAGGCCCTCGGTGAGGCTGGTGGACGCCGTGGGGGACACTAAGCCTCAGCC  
 TGTTGACTCCTGGGTC

**ACGCGT**ACGGCGCCGCTCGAGCAGAACTCATCTCAGAAGAGGATCTGGCAGCAATGATATCCTGGATT  
 ACAAGGATGACGACGATAAGGTTTAA

**Protein Sequence:** >MR231329 representing NM\_001272032  
Red=Cloning site Green=Tags(s)

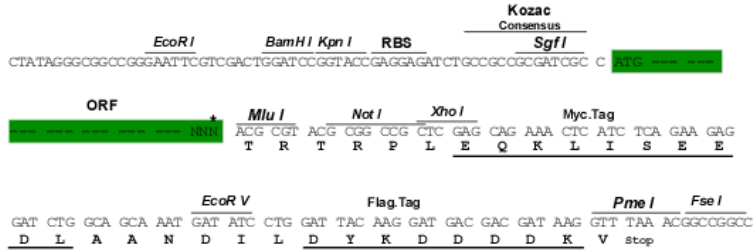
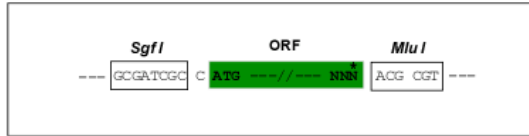
MPAELRQEQSPGSQASLATMPEAPEVLEETVTVEEDPGTPTSHVSIVTSEDGTRRTETKVTKTKVTVTT  
RTVVRQVPLGPDGLPLLDGGPPLGSFADGPLDRHYLLRGGGGPAATLSRTYHSSGGGFPDGPESRDIPSYG  
SLSRGLGVRPPRTGLLGP GPGDGCFTLPGRREAFPMGSESGPPSGRSLPEHFQAEPYGLEDDTRSLAADD  
EGGPDLEPDYSTATRRRPEYGRGLRARAFEDTADDAGELIEERPPFPAATAPLAQPERGSLGSLDRVVRR  
SPSVSDSTRKEPRWRDPELPEVLAML RHPVDPVKANAAAYLQHLCFENEGIKRRVRQLRGLPLL VALLDHP  
RAEVRRRACGALRNLSYGRD TDNKAAIRDCGGVPALVRLRAARDNEVRELVTGTLWNLSSYEPLKMVII  
DHGLQTLTHEVIVPHSGWEREPNEDSKPRDAEWTTVFKNTSGCLRNVS SDGAEARRRLRECEGLVDALLH  
ALQSAVGRKDTDNKSVENCVCIMRNLSYHVHKEVPGADRYQEAEPGIPGSTTSQRRRKDDASC FGGKKAK  
GKKDAEMDRNFDLTLDPKRTEAAKGFELLYQPEVVRLYL SLLTESRNFNTLEAAAGALQNL SAGNWTWAT  
YIRATVRKERGLPVL VELLQSETDKVVRVAIALRNLSLDQRNKDLIGSYAMTELVRNVRNAQAPAHPSA  
HLEEDTVVAVLNTIHEIVSDSLDNARSLQARGVPALVALVASSQSVREAKAASHVLQTVWSYKELRGAL  
QRDGTWTKSRFQSASTAKGPKGTPSSGGFDDSTLPLVDKSLDGEKSNTRDVIPMDTLGPDGYATVDRRERR  
TLGSDSTGDTSEKELLRPDPGRKAPPPGSRPSVRLVDAVGDTKPQPVDSWV

TRTRPLEQKLISEEDLAANDILDYKDDDDKV

**Restriction Sites:** Sgfl-MluI

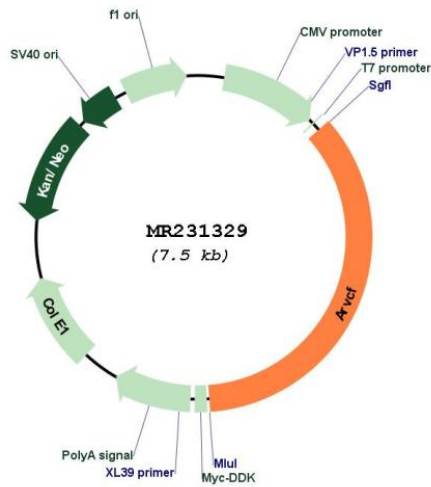
Cloning Scheme:

Cloning sites used for ORF Shuttling:



\* The last codon before the Stop codon of the ORF

Plasmid Map:



<b>ACCN:</b>	NM_001272032
<b>ORF Size:</b>	2676 bp
<b>OTI Disclaimer:</b>	The molecular sequence of this clone aligns with the gene accession number as a point of reference only. However, individual transcript sequences of the same gene can differ through naturally occurring variations (e.g. polymorphisms), each with its own valid existence. This clone is substantially in agreement with the reference, but a complete review of all prevailing variants is recommended prior to use. <a href="#">More info</a>
<b>OTI Annotation:</b>	This clone was engineered to express the complete ORF with an expression tag. Expression varies depending on the nature of the gene.
<b>Components:</b>	The ORF clone is ion-exchange column purified and shipped in a 2D barcoded Matrix tube containing 10ug of transfection-ready, dried plasmid DNA (reconstitute with 100 ul of water).
<b>Reconstitution Method:</b>	<ol style="list-style-type: none"><li>1. Centrifuge at 5,000xg for 5min.</li><li>2. Carefully open the tube and add 100ul of sterile water to dissolve the DNA.</li><li>3. Close the tube and incubate for 10 minutes at room temperature.</li><li>4. Briefly vortex the tube and then do a quick spin (less than 5000xg) to concentrate the liquid at the bottom.</li><li>5. Store the suspended plasmid at -20°C. The DNA is stable for at least one year from date of shipping when stored at -20°C.</li></ol>
<b>RefSeq:</b>	<a href="#">NM_001272032.1</a> , <a href="#">NP_001258961.1</a>
<b>RefSeq Size:</b>	4312 bp
<b>RefSeq ORF:</b>	2679 bp
<b>Locus ID:</b>	11877
<b>UniProt ID:</b>	<a href="#">P98203</a>
<b>Cytogenetics:</b>	16 11.37 cM
<b>MW:</b>	97.6 kDa
<b>Gene Summary:</b>	Involved in protein-protein interactions at adherens junctions.[UniProtKB/Swiss-Prot Function]