

## Product datasheet for **MR231304**

### **Bcar1 (NM\_001198839) Mouse Tagged ORF Clone**

#### **Product data:**

Product Type:	Expression Plasmids
Product Name:	Bcar1 (NM_001198839) Mouse Tagged ORF Clone
Tag:	Myc-DDK
Symbol:	Bcar1
Synonyms:	A1385681; Cas; Crkas
Mammalian Cell Selection:	Neomycin
Vector:	pCMV6-Entry (PS100001)
E. coli Selection:	Kanamycin (25 ug/mL)



[View online »](#)

**ORF Nucleotide Sequence:**

>MR231304 representing NM\_001198839  
 Red=Cloning site Blue=ORF Green=Tags(s)

TTTTGTAATACGACTCACTATAGGGCGGCCGGAATTCGTCGACTGGATCCGGTACCGAGGAGATCTGCC  
 GCC**CGCATCGCC**

ATGAAGTACCTGAACGTGCTGGCCAAAGCCTCTATGACAATGTTGCTGAATCCCCGGATGAGCTCTCCT  
 TCCGAAAGGGTGACATCATGACAGTGCTCGAGCGGGACACTCAGGGCCTGGATGGCTGGTGGCTCTGCTC  
 ACTGCATGGGCGCCAGGGCATTGTGCTGGTAACCGCCTCAAGATTCTGGTTGGCATGTATGATAAGAAG  
 CCAGTAGGACCTGGACCAGGCCACCTGCCACCCACCCAGCCCAGCCCAGCCTTCCCAGGGCGTCC  
 ATGCTCCGGTACCTCCAGCTTCCAGTACAGTCCCATGCTCCCCACTGCGTACCAGCCCCAGTCTGACAA  
 TGTGTACCTGGTACCCACTCCCAGCAAGACTCAGCAAGGTCTCTACCAAGCCCCTGGGCCAAACCCACAG  
 TTCCAGTACCCCCAGCCAAACAGACGTCCACATTCTCCAAGCAAACACCTCATCACTCATTTCCCAGCC  
 CAGCCACGGACCTTACCAGGTGCCCCAGGGCCTGGAAGTCCAGCCCAGGACATTTATCAGGTGCCACC  
 TTCGGCTGGCATAGGGCATGACATCTACCAAGTTCCTCCATCTCTGGACTCGCGGATGGGAGGGAACA  
 AAGCCACCGCAAAGGTGGTGGTTCCTACGCGAGTGGGACAGGGCTATGTGTATGAGGCCGCTCAGACGG  
 AGCAGGATGAGTACGACACCCACGCCACCTGCTGGCCCCAGGTCCCAGGACATCTATGATGTGCCCCC  
 TGTTCCGAGGACTGCTTCCTAACCAAGTATGGCCAGGAGGTATATGACACGCCCCCTATGGCAGTCAAAGGC  
 CCCAATGGCCGAGACCCATTGTTGGATGTGTATGACGTGCCCCCTAGTGTGGAGAAAGGCCCTGCTCTCGT  
 CCAGCCATCATTCCGGTGTATGATGTTCCCTCCTTCTGTGAGCAAGGATGTGCCCGATGGCCCACTGCTGCG  
 TGAGGAAACCTATGATGTACCTCCTGCCTTCGCCAAGCCAAAGCCCTTTGATCCCACCCGACACCCACTG  
 ATCCTTGCTGCGCCTCCTCCGACTCCCAGCAGCTGAGGATGTATATGATGTGCCCCCCCTCGCCCG  
 ACCTCTATGATGTGCCCCCTGGTTTGGCGCGGCTGGCCCTGGAACACTGTATGACGTGCCCTCGCGAGCC  
 CGTGCTCCCTCCTGAGGTGGCTGATGGGAGTGTAGTTGACGATGGTGTGTATGCTGTGCCCCACAGCC  
 GAGCGAGAGGCCCAACGGATGGCAAGCCCTGTGCGCCTCTAGCACGGGCGACGCGCAGCAGCAAT  
 CGGCATCTTCTTGGAGGTGGTGGTGCCAGGCCGGGAGCCCTGGAAGTGGAGGTTGCTGTGGAGTCCCT  
 GGCTCGGCTGCAGCAAGGCGTGAGCACCACCGTAGCCACCTTCTGGACCTGGTGGGCGAGTCCAGTGGG  
 CCTGGGGGCTGGCGTGGTACCTCTGAGCCTCAGGAGCCTCCCGCACAGGACCTGAAAGCCGCGAGTGGCGG  
 CAGTTCACGGGGCAGTCCATGAGCTCCTGGAGTTCGCCCCGGGAGCTGTGAGCAATGCCACCCACACTTC  
 TGACCGCACCTTGATGCCAAGCTTAGCCGGCAACTACAGAAGATGGAGGATGTGTACCAGACACTGGTG  
 GTCACCGGTGAGTCCCTGACAGTGGCCGAGGAAGTCCAGGATCACTCCGGAAGACCTGGACCGCCTGG  
 TGGCCTGCTCTCGGGCTGTGCCGAGGATGCCAAGCAGCTAGCTTCTTTTGCATGGCAATGCCTCGCT  
 GCTTTTACAGACGGACAAAGCCCTGGCCAGGGCCTGAGGGAAGCAGCTCCCTGCACCCAAACCCCACT  
 GATAAAGCCAGTAGCATCCAGTACGCCCCTCTCCCTCACCTCCAAGTTACCTCCCAGGACTCTCCAG  
 ACGGCCAGTATGAGAACAGTGAAGGGGTTGGATGGAGGACTATGACTACGTCCAATCTGCAGGGGAAGGA  
 GGAATTTGAGAAGACCCAGAAGGAGTGTAGAAAGGGGTAACATCATGCGGCAGGGAAAGGGCCAACTG  
 GAGTTGCAGCAGCTGAAACAGTTTGGAGCAGTGGAGCAGGAGGTGTCTCGTCCAATAGACCACGACCTGG  
 CCAACTGGACACCAGCCAGCCCTGGTGCCGGCCGGACAGGGGCTGGGGCCTTCCAGACCGACAGT  
 GCTGCTCTTCTACTTGGAGCAGTGGAGGCCAACCTGACCACACTGACAGATGCAAGTGGACGCCTTCTTC  
 ACTGCGGTGGCCACCAACCAACCAAGATCTTTGTGGCACACAGCAAGTTTGTATTCTCAGTGCCC  
 ACAAGCTTGTGTTTATTGGGACACACTGTACGGCAGGCAAAGGCGAGCTGATGTCCGAAGCCAAGTGAC  
 CCACTACAGCAATCTGCTGTGTGACCTCCTGCGTGGCATTGTGGCCACCACCAAGGCTGCTGCCCTGCAG  
 TACCCATCCCCTCCGCTGCCAGGACATGGTGGACAGGGTCAAGGAGCTAGGCCACAGCACTCAGCAGT  
 TCCGCCGCTCCTGGCCAGCTAGCTGCTGCC

**ACGGT**ACGCGGCCGCTCGAGCAGAAACTCATCTCAGAAGAGGATCTGGCAGCAATGATATCTGGATT  
 ACAAGGATGACGACGATAAGGTTTAA

Protein Sequence: >MR231304 representing NM\_001198839  
 Red=Cloning site Green=Tags(s)

```

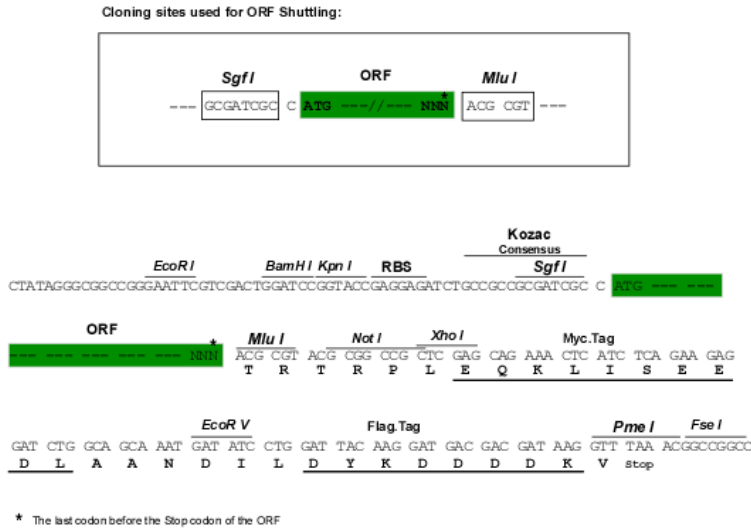
MKYLNVLAKALYDNVAESPDEL SFRKGDIMTVLERDTQGLDGWWLCSLHGRQGI VPGNRLKILVGM YDKK
PVGPGGPPATPPQPQPSL PQGVHAPVPPASQYSPMLPTAYQPQSDNVYL VPTPSKTQQGLYQAPGPNPQ
FQSPPAKQTSTFSKQTPHHSFSPATDL YQVPPGPGSPAQDIYQVPPSAGIGHDIYQVPPSLDTRGWEGT
KPPAKVVVPTRVGQGYVVEAAQTEQDEYDTPRHLLAPGPQDIYDVPPVRGLLPNQYQGEVYDTPPMAVKG
PNGRDPLLDVYDVPPSVEKGLLSSSHSVYDVPPSVSKDVPDGPLLREETYDVPPAFAPKPKFPDTRHPL
ILAAPPDSPAEDVYDVPPAPDLYDVPPGLRRPGPTLYDVPRERVLPEVADG SVVDDGVYAVPPPA
EREAPT DGKRLSASSTGSTRSSQSASSLEVVVPGREPLELEVAVESLARLQQGVSTTVAHLLDLVGSASG
PGGWRGTSEPQEPQAQDLKAAVA AVHGAVHELLEFARGAVSNATHTSDRTLHAKLSRQLQK MEDVYQTLV
VHGQVLD SGRGSPGFTPEDLDRLVACSRAPVEDAKQLASFLHGNASLLFRRTKAPGPGPEGSSSLHPNPT
DKASSIQSRPLPSPKFTSQDSPDGGYENSEGGW MEDYDVHLLQGKEEF EKTQKELLERGNIMRQK GQL
ELQQLKQFERLEQEVSRPIDHDLANWTPAQL VPGRTGGLGPSDRQLLLFYLEQCEANL TLTDAVDAFF
TAVATNQPKIFVAHSKFVILSAHKL VFIGDTLSRQAKAADVRSQVTHYSNLLCDLLRGI VATTKAAALQ
YSPSAAQDMVDRVKELGHSTQQFRRVLGQLAA
  
```

TRTRPLEQKLISEEDLAANDILDYKDDDDKV

Restriction Sites:

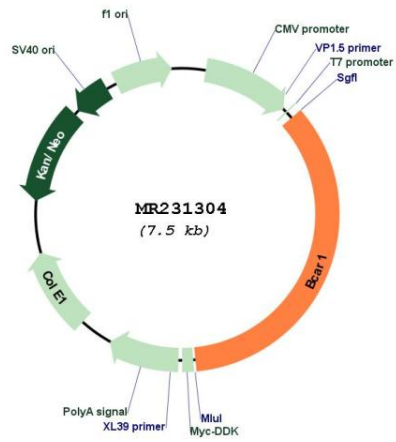
SgfI-MluI

Cloning Scheme:



<b>ACCN:</b>	NM_001198839
<b>ORF Size:</b>	2622 bp
<b>OTI Disclaimer:</b>	The molecular sequence of this clone aligns with the gene accession number as a point of reference only. However, individual transcript sequences of the same gene can differ through naturally occurring variations (e.g. polymorphisms), each with its own valid existence. This clone is substantially in agreement with the reference, but a complete review of all prevailing variants is recommended prior to use. <a href="#">More info</a>
<b>OTI Annotation:</b>	This clone was engineered to express the complete ORF with an expression tag. Expression varies depending on the nature of the gene.
<b>Components:</b>	The ORF clone is ion-exchange column purified and shipped in a 2D barcoded Matrix tube containing 10ug of transfection-ready, dried plasmid DNA (reconstitute with 100 ul of water).
<b>Reconstitution Method:</b>	<ol style="list-style-type: none"><li>1. Centrifuge at 5,000xg for 5min.</li><li>2. Carefully open the tube and add 100ul of sterile water to dissolve the DNA.</li><li>3. Close the tube and incubate for 10 minutes at room temperature.</li><li>4. Briefly vortex the tube and then do a quick spin (less than 5000xg) to concentrate the liquid at the bottom.</li><li>5. Store the suspended plasmid at -20°C. The DNA is stable for at least one year from date of shipping when stored at -20°C.</li></ol>
<b>Note:</b>	Plasmids are not sterile. For experiments where strict sterility is required, filtration with 0.22um filter is required.
<b>RefSeq:</b>	<a href="#">NM_001198839.1</a> , <a href="#">NP_001185768.1</a>
<b>RefSeq Size:</b>	3146 bp
<b>RefSeq ORF:</b>	2625 bp
<b>Locus ID:</b>	12927
<b>UniProt ID:</b>	<a href="#">Q61140</a>
<b>Cytogenetics:</b>	8 E1
<b>MW:</b>	94.8 kDa
<b>Gene Summary:</b>	Docking protein which plays a central coordinating role for tyrosine kinase-based signaling related to cell adhesion. Implicated in induction of cell migration (By similarity). Has been shown to be essential in cardiovascular development during embryogenesis. [UniProtKB/Swiss-Prot Function]

Product images:



Circular map for MR231304