

Product datasheet for **MR231276**

Sez6l2 (NM_001252567) Mouse Tagged ORF Clone

Product data:

Product Type:	Expression Plasmids
Product Name:	Sez6l2 (NM_001252567) Mouse Tagged ORF Clone
Tag:	Myc-DDK
Symbol:	Sez6l2
Synonyms:	AI835913; AW121566; BSRP-A; Psk1
Vector:	pCMV6-Entry (PS100001)
E. coli Selection:	Kanamycin (25 ug/mL)
Cell Selection:	Neomycin



[View online »](#)

ORF Nucleotide Sequence:

>MR231276 representing NM_001252567
 Red=Cloning site Blue=ORF Green=Tags(s)

TTTTGTAATACGACTCACTATAGGGCGGCCGGGAATTCGTCGACTGGATCCGGTACCGAGGAGATCTGCC
 GCC**CGGATCGCC**

ATGGGGACTCCCAAGGCCAGCACCCGCCGCTTCCAGCTGCTGCTCCTAATTCTGCTGAGCTGTGCCT
 GGATTGAGGGTCTGCCCCGAAGGAGGATGAGATGATGCCAGAGCCTGGAAGTGAGACTCCACAGTGGC
 CTCTGAGGACCTGGCTGAGCTGCTCCATGGGGCTTTGCTGCGGAAGGGCCAGAGATCGGCTTCTTGCCG
 GCCCGCCCGCCTGGCCCCGCTCCAGTCCACCCCTCAGGCCTGAGGGAGGAGAGGAGAAACCA
 CCACCACCATCATCACCACAACACTGTACCACCCTGTACCAGCCAGTTCTGTGCAATAACAACAT
 CTCGGAGGGCGAAGGGTTTGTGGAGTCTCCGACTTGGGAGCACTGCCAGCCGCTCCGTGGAGCTCCTA
 GATTGCACCTACAGCATCCATGTCTACCCTGGTTATGGCATTGAGATTGAGTGCAGACTCAACCTGT
 CTCAGGAGGAAGAACTTCTGGTGTGGCCGGTGGGGTTCTCAGGCCTGGCCCCAGACTCCTGGCCAA
 TTCTCCATGCTGGGAGAAGACAAGTGTGCGGAGCCAAACAAACCGGCTGCTCCTGCATTTCCAGAGT
 CCTCGAGTCCCAAGGGGAATGGCTTCCAGATTACTATCAGGCATACCTTCTGAGCTGGCGCTCCAC
 CCCGGCCAGCCACGGGGATGTGAGCGTGACAGACTTGCATCCTGGGGGCACTGCCACCTTCCACTGTGA
 CTCAGGATACCAGCTACAGGGTGAAGGAGCCCTCATTGCTCAATGGTACCCGGCCAGCCTGGACTGGT
 GAACCCCTAGCTGTACAGCATCTTGGTGGCACCATCCACAATGCCACACTGGGTGCGATTGTATCCC
 CTGAGCCTGGGGAGCTGCAGGGCCAACTCACCTGCCGCTGGGTCAATTGAAGCGGCCAGGGACGCCG
 GCTTACCTACACTTTGAGAGAGTCTACTGGATGAGGACAATGACCGGCTGATGGTGGCTCAGGGGA
 AGCCCCCTGTCCCTGTGATTTACGACTGACATGGATGATGTCCTGAACCGGTCTCATCAGTATGA
 CCCAGTCCCTCTACGTAGAAGTCTTTCCAGAGACACCAGCCAAACCCCTGCTGCTCAGCTCCGATTTGA
 AGCCTTTGAGGAGGACCGCTGTTCCCGGTTCTGGCTCACGGCAATGTGACCACTACAGATCCCTGAG
 TTCACCCAGGAGCACTGGCCACCTTCTCATGCCTCCAGGATATGCTCTGGAGCCACCAGGACCCCA
 ATGCTATCGAATGTGTGGATCCCACCGAACCCACTGGAACGACACAGAGCCAGCCTGCAAGGCCATGTG
 TGGAGGAGAGCTGTCTGAGCCAGCTGGTGGTACTCTCTCCGACTGGCCCCAGAGTTACAGCCCTGGC
 CAAGACTGCGTGTGGGCCTGCACGTCCAGGAAGAGAAGCGCATCTTGTCCAAGTTGAAATCTTGAAATG
 TTCGGAAGGGGATATGTAACACTGTTGACGGGACGGTCCGAGCGCTCGAGTCTGGCCAGCTGGC
 AGGACCTCAGCCGCGCCCGCCTCCTCTCTCTGGACCTGATCTACTTGCAGTTTCAGGACCCCT
 GGTCCCCAAATCCGGGCTAGGCCAGGGTTTCGTGTTACATTTCAAAGAGGTCCCGAGAAACGATACGT
 GCCCGGAGCTACCACCCTGAGTGGGGCTGGAGGACAGCATCCACGGGGACCTTATCCGGGTACAGT
 GCTCACCTATCAATGCGAGCCTGGCTATGAACTACTGGGATCAGACATCCTCACTTGCCAATGGGACCTG
 TCCTGGAGCGCGGCCACCTGCCTGCCAAAAGATCATGACTTGTGCTGACCCTGGCGAGATCACC
 AACATGCCATCGGACTGCCTCAGATGCTGGTTTCCCTGTGGGCTCCCACGTCCAGTATCGCTGTCTGCCAGGGTA
 CAGCCTGGAAGGAGCAGCTGTGCTACCTGCTACAGCCGGACACAGGCACACCAAGTGGAGTATCGG
 GTCCCCAAATGCGCCTTAAAGTACGAGCCGTGCCTGAACCCGGTGTTCCTGAGAATGGTTACCAA
 ACTCTGTACAAGCATCACTACCAAGCGGGCAGTCCGCTACGCTTCTTCTGCTACGAGGGCTTTGAGT
 CATCGGAGTACCATCATGTGTACCCGGTCAACCCCTCCAGTGGACCAGCCAGCCCCACTCTGCAAAGT
 GCCTATGAGGAGCTCCTGGACAACCGAAAACCTGGAAGTGAACCCAGACTACAGACCCATCAGGCAGCTGG
 AGGGTGGTAATCTCGCTTTGGCCATCCTGTTGCCCTGGGCTTGGTCAATTGCTTGGCATTGGCGTTTA
 CATATACTACACTAAGCTACAAGGAAAATCCCTCTTTGGCTTCTCGGGTCTCACTCTTACAGTCCCATT
 ACGGTGGAGTCAGACTTCAGCAACCCACTGTATGAAGCTGGGGATACGAGGGAGTATGAAGTTTCCATC

ACGGTACGCGGCCGCTCGAGCAGAACTCATCTCAGAAGAGGATCTGGCAGCAATGATATCCTGGATT
 ACAAGGATGACGACGATAAGGTTTAA

Protein Sequence: >MR231276 representing NM_001252567
Red=Cloning site Green=Tags(s)

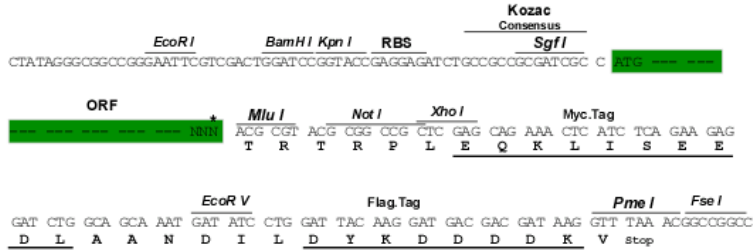
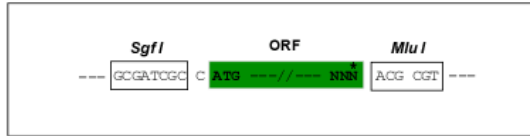
MGTPKAQHPPPSQLLLLILLSCAWIEGLPLKEDEMPEPGSETPTVASEDLAELLHGALLRKGPEIGFLP
APPPPGPASPVPPLRPEGGEEETTTTIIITTTTVTSPVLCNNNISEGEGFVESPDLGSTASRSVELL
DCTYSIHVYPGYGIEIQVQTLNLSQEEELLVLAGGGSPGLAPRLLANSSMLGEGQVLRSPNRRLLHFQS
PRVPRGNGFRIHYQAYLLSCGFPPRPAHGDVSVTDLHPGGTATFHCDSGYQLQGEETLICLNTRPAWTG
EPPSCTASCGGTIHNATLGRIVSPEPGAAGPNLTCRWVIEAAEGRRLLHLHFERSLDEDNDRMLMVRSGG
SPLSPVIYDSMDVPERGLISDAQSLYVELLSETPANPLLLSLRFEAFEEDRCFPFLAHGNVTTTDP
FHPGALATFSCLPGYALEPPGPPNAIECVDPTEPHWNTPEPACKAMCGGELSEPAGVVLSPDWPQSYSPG
QDCVWGLHVQEEKRILLQVEILNVREGDMLTFDGDGPSARVLAQLRGPQPRRLLSSGPDLTQFQAPP
GPPNPGLGQGFVLHFKEVPRNDTCPELPPPEWGWRTASHGDLIRGTVLTQCEPGYELLGSDILTCQWDL
SWSAAPPACQKIMTCADPGEITNGHRTASDAGFPVGSVYRCLPGYSLEGAAVLTCYSRDTGTPKWSDR
VPKCALKYEPCLNPGVPENGYQTLYKHYYQAGESLRFFCYEGFELIGEVTITCVPGHPSQWTSQPPLCKV
AYEELLDNRKLEVTQTTDPSRQLEGGNLAAILLPLGLVIVLIGVYIYYTKLQKSLFGFSGSHSYSPI
TVESDFSNPLYEAGDTREYEVSI

TRTRPLEQKLISEEDLAANDILDYKDDDDKV

Restriction Sites: Sgfl-Mlul

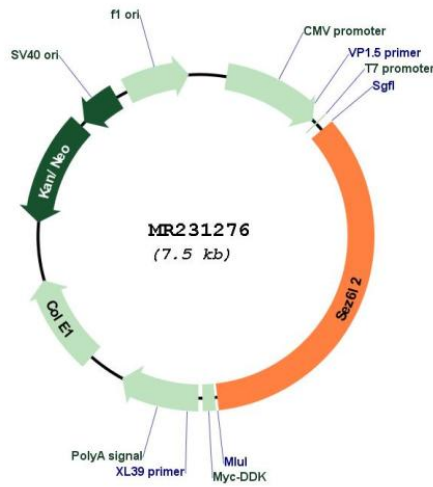
Cloning Scheme:

Cloning sites used for ORF Shuttling:



* The last codon before the Stop codon of the ORF

Plasmid Map:



ACCN:	NM_001252567
ORF Size:	2589 bp
OTI Disclaimer:	The molecular sequence of this clone aligns with the gene accession number as a point of reference only. However, individual transcript sequences of the same gene can differ through naturally occurring variations (e.g. polymorphisms), each with its own valid existence. This clone is substantially in agreement with the reference, but a complete review of all prevailing variants is recommended prior to use. More info
OTI Annotation:	This clone was engineered to express the complete ORF with an expression tag. Expression varies depending on the nature of the gene.
Components:	The ORF clone is ion-exchange column purified and shipped in a 2D barcoded Matrix tube containing 10ug of transfection-ready, dried plasmid DNA (reconstitute with 100 ul of water).
Reconstitution Method:	<ol style="list-style-type: none">1. Centrifuge at 5,000xg for 5min.2. Carefully open the tube and add 100ul of sterile water to dissolve the DNA.3. Close the tube and incubate for 10 minutes at room temperature.4. Briefly vortex the tube and then do a quick spin (less than 5000xg) to concentrate the liquid at the bottom.5. Store the suspended plasmid at -20°C. The DNA is stable for at least one year from date of shipping when stored at -20°C.
RefSeq:	NM_001252567.1 , NP_001239496.1
RefSeq Size:	3632 bp
RefSeq ORF:	2592 bp
Locus ID:	233878
UniProt ID:	Q4V9Z5
Cytogenetics:	7 F3
MW:	93.8 kDa
Gene Summary:	May contribute to specialized endoplasmic reticulum functions in neurons.[UniProtKB/Swiss-Prot Function]