

Product datasheet for **MR231246**

Scml2 (NM_001290652) Mouse Tagged ORF Clone

Product data:

Product Type:	Expression Plasmids
Product Name:	Scml2 (NM_001290652) Mouse Tagged ORF Clone
Tag:	Myc-DDK
Symbol:	Scml2
Synonyms:	4932420G07Rik
Vector:	pCMV6-Entry (PS100001)
E. coli Selection:	Kanamycin (25 ug/mL)
Cell Selection:	Neomycin



[View online »](#)

ORF Nucleotide
Sequence:

>MR231246 representing NM_001290652
 Red=Cloning site Blue=ORF Green=Tags(s)

TTTTGTAATACGACTCACTATAGGGCGGCCGGGAATTCGTGACTGGATCCGGTACCGAGGAGATCTGCC
 GCCGCGATCGCC

ATGGGGCAAACAGCGAATGAAGATCATTTTGACTGGGACAAGTACTTGAAGAGACTGGATCGATAAGTG
 CTCTTCTGAATATTTTCAGACAGTCTAAGACTCCACCACTAATGAATCAAATTTGGTATGAAATTTGGA
 AGCCCGTGACCCTCGCAATATTGATTCGGTGTGTGTTGCTTCGGTCATTGGAATTAAGGAGCCAGGTTA
 CGTCTACGACTGGATGGTAGTACAATAAGAATGATTTTTGGAGACTTGTGGATTCATCAGACATAACAAC
 CTGTTGGGACGTGTGAACAAGGAGGAGATTTACTTCAGCCTCCACTGGGGTACACACTGAATACTTCATC
 ATGGCCCATGTTCTTACTACGTGTACTAAGTGGATCTGAACTGGCACCTGCAGTGTCTTTAAGGAGGAA
 CCACCAGTCCACTCCAAAATAATTTTCATAGTTGGGATGAAGATTGAAGCTGTCGATAGAAAAATCCAT
 TTATGATCTGCTGCCACAATTGGAGCTGTCTGTGGAGATCAACTTCATATCCTTTTGGATGGATGGAG
 TGGAGCATTTGATTATTGGTGTGACTATGACTCCCGAGACATCTCCAGTTGGATGGTGTGCGCTCACA
 GGAGATGTATTACAGCCACCAGGAAAAATTTGTTGAAAAAGACCAAGGCGCAAAAGAAGAACCCAGACTAT
 GGAGACTTAGAAGTCTCTTTTGGGAAATGAAGAAGAGGCCCCAGAAGCTGCAGAAGAACCCTGGGACCAG
 TGTACTTACTTTTGGAGATGAAAACAGAAGTGTGAAAGATTGCCGAGGAGAAGCTGCAGAAGAACCCTGGG
 ACCAGTGCATTTACTTTTGGAGATGAAAACAGAAGTGTGAAAGATTGCCAAGGAGGTTGGAAAAACCCA
 AGGGCAGAGGATTCATCAAACCTGGAAAAGATGAAACCAGACCTGGGAAACATGACCAAGGAGCCCCAGC
 TGGGAAAAACCCAGGGGAGAGGATTCACCCAACCTTTGGAAGATGAAGCCAGACCAGGAAGAGATGTC
 CAAGTAGCCCCAGCTGAGAAAAACGCAAGGGCAAAACAGTCAACACACCTTGGACTGAGGATCCCAGAC
 TTTTGCAGATCAAGGAGATGCCCCAGCTGAGAAAAACGCAAGGGCAAAACAGTCAACACACCTTGGACT
 TGAGGATCCCAGACTTTTTCAGATCAAGGAGCAGCCCCAGCTGAGAAAAACGCAAGGGCAAAACAGTCA
 ACCACACCTTGGACTGAGGATCCCAGACTTTTTCAGATCAAGGAGATGCCCCAGCTGAGAAAAACGCA
 AGGGCAAAACAGTCAACACACCTTGGACTGAGGATCCCAGACTTTTTCAGATCAAGGAGATGCCCCAGC
 TGAGAAAAACGCAAGGGCAAAACAGTCAACACACCTTGGACTGAGGATCCCAGACTTTTTCAGATCAA
 GGAGCAGCCCCAGCTGAGAAAAACGCAAGGGCAAAACAGTCAACACACCTTGGACTGAGGATCCCAGAC
 TTTTTCAGATCAAGGAGATGCCCCAGCTGAAAAAAACCCAAGGGCAAAAGAGTCAACAAATCTCGGAA
 AGACCAAGCCCAGTTTTAGCTGATGAAGAAGCAATGCCAGCTCTTAGTGTGAGCAGTACAGAGAGAACA
 CCACCTTCTTCTCTGAACAACCAAGTCTTCTACCTCTGGGAAAACAAAATCCACCTCTAGAGGGGCTC
 AAACCTCAAGGAAGTCTCCACGAAAAACAAGTGTGTGCAACCAGTACCAAGACCAGCAAGAAAGCAGG
 AAAATCTAAGTCTACTGGAAATCTTATCCCCCTAAGAAGGGCATTACTATTAATAATTTGCTTACAAAAG
 AAAAAGGGTGGAAAGTCTGGAAAAAGGAAAAAGTATTCCAGTTATTTCTTCTACATCTTCAGCTTCTT
 TAAGTACACTGATGAAAAGTCTTTCATCTAATAAGACTTCTGCGGGGCCATCTAAAATAGTGATGTCTAC
 AGTTTGTGTGATATAAATAAATCATGGAGATTGTGGCCCTTCTGGATCCACAGAAGGTTTCAGCAGCTA
 CCTAACCACTTCGGTCCAGGCCCTGTGAATGTCATTCTCCAGCGGACTGTGCAGGCCTGTGTCAATTGTG
 CCTTTCAGGCCAAGGATGTGTTTCTATTTCTTAAAACAGATAATAGAGGAGGAGAAATGATAACTGCCTT
 CTTTGATGGGAAAGTTCATACTGTTTCAGCTCCCTCCAGTGAATAGTGCATCATTTGCATTCGCTTTCTT
 GAAAAATTTCTGCCAAAGCCTGCAGTGTGATAACTTTTTGAGTAGCCAGCCTTTCAGACGTGAGGCTCAAG
 TTCTACCCAGATACAGGCACTGATCAAAGCAAACAGAAAAATGGGAAACCAAGGAAAAAGAGAAGCCT
 CAAACGATTGTCTCTGCATCCTCATCGTTCTGCTCCTGTCTCATTAAGTTCCAGAAAGTCTGGGCAA
 GCGTCTAAAGGAAAT

ACGCGTACGCGGCCGCTCGAGCAGAACTCATCTCAGAAGAGGATCTGGCAGCAATGATATCCTGGATT
 ACAAGGATGACGACGATAAGGTTTAA

Protein Sequence:

>MR231246 representing NM_001290652
 Red=Cloning site Green=Tags(s)

MGQTANEDHFDWDKYLKETGSIAPSEYFRQSKTPPTNEFKIGMKLEARDPRNIDSVCVASVIGITGARL
 RLRLDGS DNKNDFWRLVDSSDIQPVGTCEQGGDLLQPPLGYTLNTSSWPMFLLRVLTGSELAPAVFFKEE
 PPRPLQNNFIVGMKIEAVDRKNPFMICPATIGAVCGDQLHITFDGWSGAFDYWCDYDSRDIFPVGWCRIT
 GDVLPQPPGKIVEKRPRRRRRLWRLRTALLGNEEEAPEAAEPEGTSVLTFGDENRTLKDCRGEAAEPEG
 TSAFTFGDENRTLKDCQGGWKKPKGRGFIKPGKDETRPGKHDQGAPAGKKPRGRGFTQPLEDEARPRD
 QVAPAEKKRKGKTVTTPWTE DPRLFADQGDAPAEKKRKGKTVTTPWTE DPRLFADQGAAPAEKKRKGKTV
 TTPWTE DPRLFADQGDAPAEKKRKGKTVTTPWTE DPRLFADQGDAPAEKKRKGKTVTTPWTE DPRLFADQ
 GAAPAEKKRKGKTVTTPWTE DPRLFADQGDAPAEKKPKGKRVTKSRKDQAQFLADEEAMPALSVSSTERT
 PPSSEQPKSSTSGKTKSTSRGAQTSRKS PRKTSVVQVPKTSKKAGKSKSTGNTSSPKGITIKIVLPK
 KKGKSGKKEKSI PVISSTSSASLSTLMKSSSNKTSAGPSKIVMSTVCVYINKHGDCGPFDPQKVQQL
 PNHFGPGPVNIVILQRTVQACVNCAFAQADVFLFLKTDNRGGEMITAFFDGKVHTVQLPPVNSASFALRFL
 ENFCQSLQCDNFLSSQPFRRQAQVPTPDTGTDQSKPENGEPEKRS LKRLSLHPHRSAPVSKVPRKSGQ
 ASKGN

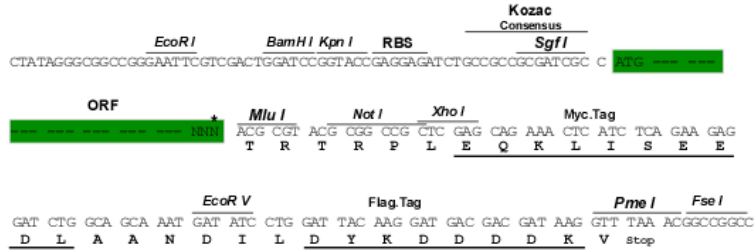
TRTRPLEQKLISEEDLAANDILDYKDDDDKV

Restriction Sites:

Sgfl-Mlul

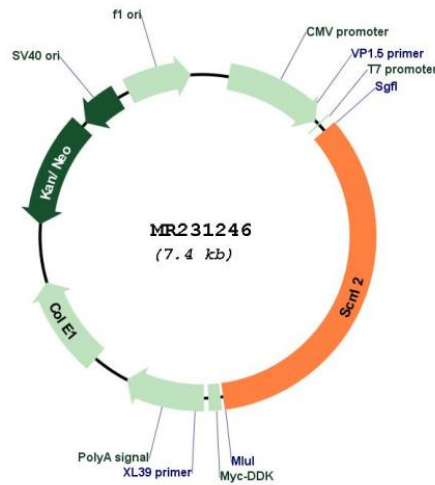
Cloning Scheme:

Cloning sites used for ORF Shutting:



* The last codon before the Stop codon of the ORF

Plasmid Map:



ACCN:	NM_001290652
ORF Size:	2535 bp
OTI Disclaimer:	The molecular sequence of this clone aligns with the gene accession number as a point of reference only. However, individual transcript sequences of the same gene can differ through naturally occurring variations (e.g. polymorphisms), each with its own valid existence. This clone is substantially in agreement with the reference, but a complete review of all prevailing variants is recommended prior to use. More info
OTI Annotation:	This clone was engineered to express the complete ORF with an expression tag. Expression varies depending on the nature of the gene.
Components:	The ORF clone is ion-exchange column purified and shipped in a 2D barcoded Matrix tube containing 10ug of transfection-ready, dried plasmid DNA (reconstitute with 100 ul of water).
Reconstitution Method:	<ol style="list-style-type: none">1. Centrifuge at 5,000xg for 5min.2. Carefully open the tube and add 100ul of sterile water to dissolve the DNA.3. Close the tube and incubate for 10 minutes at room temperature.4. Briefly vortex the tube and then do a quick spin (less than 5000xg) to concentrate the liquid at the bottom.5. Store the suspended plasmid at -20°C. The DNA is stable for at least one year from date of shipping when stored at -20°C.
RefSeq:	NM_001290652.1 , NP_001277581.1
RefSeq Size:	4701 bp
RefSeq ORF:	2538 bp
Locus ID:	107815
Cytogenetics:	X F4
MW:	93.3 kDa