

Product datasheet for **MR231242**

Gpr155 (NM_001276444) Mouse Tagged ORF Clone

Product data:

Product Type:	Expression Plasmids
Product Name:	Gpr155 (NM_001276444) Mouse Tagged ORF Clone
Tag:	Myc-DDK
Symbol:	Gpr155
Synonyms:	1110017O10Rik; DEPDC3; F730029F15Rik; PGR22
Vector:	pCMV6-Entry (PS100001)
E. coli Selection:	Kanamycin (25 ug/mL)
Cell Selection:	Neomycin



[View online »](#)

ORF Nucleotide
Sequence:

>MR231242 representing NM_001276444
 Red=Cloning site Blue=ORF Green=Tags(s)

TTTTGTAATACGACTCACTATAGGGCGGCCGGGAATTCGTCGACTGGATCCGGTACCGAGGAGATCTGCC
 GCC**CGGATCGCC**

ATGGATTCTTATTCTCAGCAAAGAACTCAACGCTTGCTGGTGATATGAATGCGACTTGGCTGCCTCTC
 ATGGATTTAATGCCACCGCGATCCACCTTCGATGTCGATAACCGGCTTCCCGGCCCTTACTGGAGTG
 CTTTGGCATAGTCCTTTGTGGCTACATAGCAGGAAGGGCCAATATCATAACTCAACACAGGCCAAAGGA
 CTGGGGAATTCGTCCTCAGATTTGCCCTTCCAGCCTTATTATCAAAAACATGGTTGTGCTTAATTTTT
 CCAACGTGGACTGGGCTTTTCTCTACAGCGTCTTAATTGGCAAAGCCTCCGTGTTTTTTCATTGTGTGTG
 ATTAACCTTATTGGTGGCCAGTCTGAGAGCCGGTTTAGCAAAGCTGGACTATCCCTATTTTTGCTACA
 CAGAGTAATGACTTTGCTTTGGGATACCCTATAGTTGAAGCTCTGTACCAATCTACATATCCAGAGTATC
 TGCAGTACATTTATTTGGTGGCACCAATATCTCTTATGATGCTAAACCCCATAGGGTTTATCTTCTGTGA
 AATCCAGAAGTCAAAGACACTCAAATGCTTCTCAAATAAAGCAAAAATTGTGGGACTTGGATTTCTA
 CGCGTGTACAGAACCCGATAGTATTTATGGTCTTTGTTGGCATTGCCTTCAATTTTATTCTTGATAAAA
 AGATCCAGTATATATGGAAAACCTTCTGGATGGGCTTCAAATTCCTTCTCTGGATCAGCCCTGTTTTA
 TCTTGGTCTGACCATGGTAGGAAAAATCAGGCGACTGAAGAAGTCGGCGTTTGTGGTTCTTACTCTTCTC
 ATCACAGCCAACTCCTGGTGTGCCCTCCTGTGCAGAGAAATGGTGGAACTCCTGGACAAGGGGGACA
 GCGTAGTGAACCATACAAGCCTGTCCAATATGCGTTTCTATATGGTGTCTTCCCTGTGGCTCCAGGAGT
 GGCTATCTTTGCAACACAGTTCAACATGGAAGTGGAGATTATAACCTCAGGCATGGTAATAAGTACATTT
 GTGTCTGCTCCAATCATGTATGTTTCTGCCTGGTTATTAACCTTCTACCATGGATGCCAAGCCACTGG
 CGTATGCCATTCAGAATGTTAGCTTTGATATAAGTATTATCAGCCTGGTCTCCTTGACTATTGTTTGTGC
 TGAATGATGATATGGAATTTTGTAAAGAAAAAATTTGTTGGACAAATTTTGGTGTGTTTTATTG
 TACAGTCCCTGTACAGCACCTATCTGTGGACAGGCCTCTAGCAGTTTCTTTGTTTCTTTAAAGAAGC
 GCGAGAGCGTTACGCTCCCGGTGGGAATCATCATCTCTGGCTGGGGATCCCTGCTCTCCTTGTGGG
 CGTGCTTCTGATAACTGGAAAACACAACGGAGACAGCATTGACTCAGCCTTCTTTTATGGAAAAGAGCAG
 ATGATCACACGGCAGTACCCTGTTCTGCAGCATTCTCATAGCTGGGGTGTCACTCATGTGCATGAACC
 GCACCACCAAGCTGGTCACTACGAAGTTTCGGCCAGTCTCAGAACCACAAACCAGTAGAGCCTGGAAG
 CACTGCGTTTGGGAGAACCCAGCACCAACAAATGAACCAGAACTCTTCCAAGTTCTATCCAGAAACA
 AGTTGCTGTTCTTCTCCTTGGGAAATGGTGAATTACGCTGCCATCCATAGAGCCAGTAACGAACCTCAA
 GTGCTAGTGGGCTATGCCTTCTCCTTTGAGAAAACCGACCACTGTGTGAGCCGTTGTGACTCCAGAG
 CTGCATCCTCGCCAGGAAGAAGAGCAGTACCTGCAGAGCGGAGACCCACAGCTGACCCGGCACGTCCTG
 TTGTGCTTGTGCTTATCATCGGCCTCTTTGCTAATCTCTCCAGCTGCCTGTGGTGGTTGTTCAACCACG
 AGACGGGACGGCTCTATGTTGAATTACAGTTTTTCTGTGCCGTGTTAACTTTGGCCAGGGATTTATTTT
 CTTTGGAACTTTTGGGCTGGACAACATCTAATCATCTACCTTTCAAAGAAGGCTTGAATTCCTGTGG
 AACACAAAGAAGCAGCAGCAGAGAAATCCCCGTTTCCGAGGAAATAAAAATGACCTGTCAACAGT
 TTGTGCATTATCACCGGACCTGTGCATCCGAAACATCGTCAGAGAAAGGAGGTGGTGGCAAGACTTC
 TGCCGGGACCTTCTGTGGCTGTGACCTGGTGAAGTGGTCAATCGAAGTCGGCCTTGTCTTCTGACCCGGC
 GAAGCTGTGATCTACGGAGACAGACTGGTGAAGGGGGGTATCCAACACATCAACCAATGAATACGAGT
 TCCGGGACGAGTATCTTTTTACCGATTCTTCAAGAGTCTGAGCAGAGTCTCCTGCCCGTACTCT
 AAGAGACCACAGGAGGAAAGCTATAAAGAAATCGGTCACTCATCTCCACCCTCAGTCTCCCTAAGACT

AG**CGGACCG**ACGCGTACGCGGCCGCTCGAGCAGAACTCATCTCAGAAGAGGATCTGGCAGCAAATGATATCC
 TGGATTACAAGGATGACGACGATAAGGTTTAA

Protein Sequence: >MR231242 representing NM_001276444

Red=Cloning site Green=Tags(s)

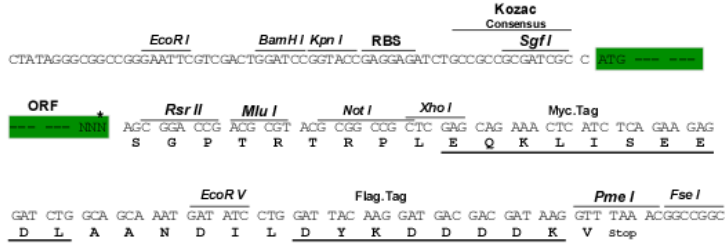
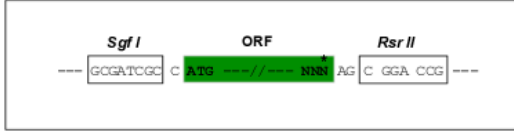
MDSYFSAKNSTLAGDMNATWPASHGFNATGDPPSMSITRLFPALLECFGIVLCGYIAGRANIITSTQAKG
LGNFVSRFALPALLFKNMVVLNFSNVDWAFLYSVLIGKASVFFIVCVLTLLVASPESRFKAGLFPFIFAT
QSNDFALGYPIVEALYQSTYPEYLQYIYLVAPISLMMLNPIGFIFCEIQKSKDTQNASQNKAKIVLGLFL
RVLQNPIVFMVFGIAFNFIIDKKIPVYMNENFLDGLANSFSGSALFYLGLTMVGKIRRLKKSFAFVLTLL
ITAKLLVLPLLCREMVELLDKGDVSVNHTSLSNYAFLYGVFPVAPGVAIFATQFNMEVEIITSGMVI STF
VSAPIMYVSAWLLTFPTMDAKPLAYAIQNVSFDISIISLVSLTIVCAGMMIWNFVKEKNFVGQILVFVLL
YSSLYSTYLWTGLLAVSLFLLKKRESVQLPVGIIISGWGIPALLVGVLLITGKHNGDSIDS AFFYGKEQ
MITTAVTLFCSIL IAGVSLMCMNRTTQAGHYEGFGQSQNHKPVVEPGSTAFEENPAPTNEPELFPSSIPET
SCCSCSLGNGELRCPSEIEPVTNSSASGPMPSSEKTDHCVSRCDSCILAQEEEEQYLQSGDPQLTRHVL
LCLLLIIGLFANLSSCLWWLFNHETGRLYVELQFFCAVFNFGQGFISFGIFGLDKHLIILPFKRRLEFLW
NNKEAADRESVSEEIKMTCQQFVHYHRDLCIRNIVRERRCGAKTSAGTF CGCDLVNWLIEVGLASDRG
EAVIYGDRLVQGGVIQHITNEYEFRDEYLFYRFLQKSPEQSPPARTLRDHQEESYKEIGHSSPPSVSPKT

SGPTRTRPLEQKLI SEEDLAANDILDYKDDDDKV

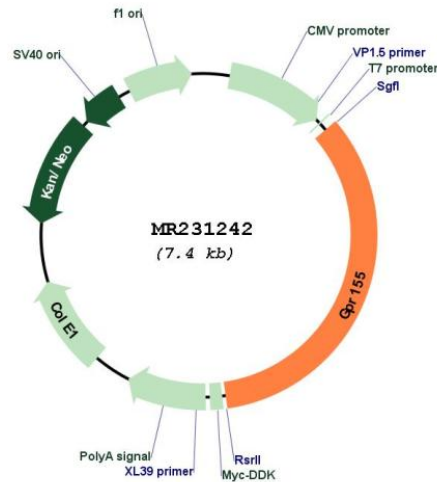
Restriction Sites: SgfI-RsrII

Cloning Scheme:

Cloning sites used for ORF Shuttling:



* The last codon before the Stop codon of the ORF

Plasmid Map:


ACCN: NM_001276444

ORF Size: 2520 bp

OTI Disclaimer: The molecular sequence of this clone aligns with the gene accession number as a point of reference only. However, individual transcript sequences of the same gene can differ through naturally occurring variations (e.g. polymorphisms), each with its own valid existence. This clone is substantially in agreement with the reference, but a complete review of all prevailing variants is recommended prior to use. [More info](#)

OTI Annotation: This clone was engineered to express the complete ORF with an expression tag. Expression varies depending on the nature of the gene.

Components: The ORF clone is ion-exchange column purified and shipped in a 2D barcoded Matrix tube containing 10ug of transfection-ready, dried plasmid DNA (reconstitute with 100 ul of water).

Reconstitution Method:

1. Centrifuge at 5,000xg for 5min.
2. Carefully open the tube and add 100ul of sterile water to dissolve the DNA.
3. Close the tube and incubate for 10 minutes at room temperature.
4. Briefly vortex the tube and then do a quick spin (less than 5000xg) to concentrate the liquid at the bottom.
5. Store the suspended plasmid at -20°C. The DNA is stable for at least one year from date of shipping when stored at -20°C.

RefSeq: [NM_001276444.1](#), [NP_001263373.1](#)

RefSeq Size: 4885 bp

RefSeq ORF: 2523 bp

Locus ID: 68526

Cytogenetics: 2 C3

MW: 93.6 kDa