

Product datasheet for **MR231239**

Dsc3 (NM_001291809) Mouse Tagged ORF Clone

Product data:

Product Type:	Expression Plasmids
Product Name:	Dsc3 (NM_001291809) Mouse Tagged ORF Clone
Tag:	Myc-DDK
Symbol:	Dsc3
Synonyms:	5430426I24Rik
Vector:	pCMV6-Entry (PS100001)
E. coli Selection:	Kanamycin (25 ug/mL)
Cell Selection:	Neomycin



[View online »](#)

ORF Nucleotide
Sequence:

>MR231239 representing NM_001291809
Red=Cloning site Blue=ORF Green=Tags(s)

TTTTGTAATACGACTCACTATAGGGCGGCCGGAATTCGTGCGACTGGATCCGGTACCGAGGAGATCTGCC
GCC**CGGATCGCC**

ATGGTGGTTCCTGAGTTCGGAGCCACAGTGCAGGGCACTATGCACGAAGCTGCTGCTGACCCCTCTGGG
TCTTCAGTTTTGTTGGTGAAGCCTGTAAAAAGGTGACATTTTCATGTACCTTCAACACTAGAGGCAGACAA
GATCATCGGAAGAGTTAGTTTGAAGAGTGTCTCAGCTCGGCAGATGGCATCATGCCAAGTATGATCCTGAT
TTCAGAGTTCTAGATGATGGGTCAAGTTTATCCGACCAGAGCTGTTGTATTGTCTGATGAGAAAAGATCTT
TTACCATTCACTTTCTGATTCAAAGATGCAGACACAGAAAGAGATCCCTGTAATCCTGGAGCACAAGAA
GAAGGTACTGAAGAAAAGACACACTAAGGAAACTGTCCTCAGAAGATCTAAGAGAAGATGGGCACCCATT
CCATGTTCAATGCAAGAAAATTCCTTGGGTCCCTTCCATTGTTTCTCAACAGGTTCACTCTGATGCAG
CTCAGAACTACACAGTCTTCTATTCAATAAGTGGGCGTGGAGCTGATCAAGAACCCTTAACTGGTTTTT
CATCGAGAGAGACTGGGAATCTATATTGTACTCGGCCTGTGGATCGTGAGGAATATGATGTTTTTGAT
TTGATTGCCTATGCATCCACTGCAGATGGCTATTCAGCAGATTTACCTCTCCCACTGCCATCAAATAG
AGGATGAAAATGACAATTACCCTCTTTTACAGAAGCAATTTATGCTTTTGAAGTTCAGAAGGCAGTAG
ACTTGGTACTGTAGTGGGAACAGTTTGTGCCACGGATAAAGATGAGCCTGACACTATGCACACACGCCCTC
AAGTACAGCATCTTGGAGCAGACCCACCATCACCTGGGCTTTTTCTGTGCACCCTGACACAGGTGTCA
TCACCACCGTCTCTCACTACATGGACAGAGAGGTCGTGGACAAGTACAACTGATAATGAAAAGTTCAAGG
CATGAATGGCCAAATTTTTGGACTAATCAGTACATCAACTGTATCATAACTGTGCAAGATTCCAATGAC
AATGCACCCACATTGAGCAAAAATACTTATGAACTGCTGTGGAGGAAAATACATATAATGTTGAAATCT
TGCGCATACCTGTAGATGATAAGGACATGATTAACACTGCAACTGGAAGGCAAAATTTCACTCTTAAA
AGGAAATGAAAATGGATGGTTCAAAATCACAACAGACCCAGTGACAAATGAAGGTGTTCTGTGTGTGTG
AAGCCACTGGATTATGAAGAAAATCGTCAAGTACCCTAGAGATTGGTGTGAACAACGAAGCTCCATTCA
TTAAAGATGTTGCAAACCGAATTCACCATGAACCGGCTATGGTTACAGTACATGTGAAGGATCAGAA
TGAGGGGCCAGAATGCAAGCCCCAGAGCAATATGTGCGGATCAAAGAGAACTCAGCAGTTGGGTCTAAG
ATCAATGGCTACAAGGCTACGACCCTGAAACCAAGAATAGCAATGGCTTAAAGTACAAAAATTCAGG
ATCCTAAAGACTGGGTGAGCATTGAAGAAGTTTCGGGGTGTCTTACCATATCAAAAACCTAGACAGAGA
AATAATGGCTCCAAGAAATGACATGTACAATATTACAGTCATGGCAATTGACCAAGAGGGTAAATCATGC
ACAGGAACACTTGCAGTGAACATCGAGGATGTGAATGACAACGCACCAGAGATAATTCAAGATTATTTG
TTATCTGTAAGCCAAAGATGGGGTACACGGACATTTCACTGTGGATCCTGATGAACCTATCCATGGCCC
TCCCTTTCAGTTCAACTGGCAAACACTTCTCCAGAAGTCAACAGAATCTGGACCCTCAACCAAGTTAAT
GATACAGCTGCTCGCCTGTCTATCAGAAAACGCGGATGTTCAAATATACAACGTTCTGTTACTGTAA
AAGACAGAGCAGGCCAATCTGCAACCAAAATCTTGAGAGTTAACCTGTGTGATTGTACTCATCCAGCCA
ATGTCCGCTCAGATCAAGGAGTGCAGGAATTACCCTGGGAAAGTGGGCCATCCTTGCCATCTTGTGGGC
ATTGCTCTGCTATTTTCGGTACTGCTAACTTTGGTATGTGGAGTTGTTACTGCCCGAAAAGGAAAACACT
TCCCTGAAGATTTAGCGCAGCAAACTTAATTATCAAATACCGAAGCACCTGGGGATGACAGAGTGTG
CTCTGCCAATGGATTACCACCCACACTGCCAACAACTCCAGCCAAGGCTTCTGTGGTACAATGGGGTCA
GGAATGAGGAATGGTGGGCAGGAGACCATCGAGATGATGAAAGGACACCAGACCTTGGACTCCTGCCGTG
TGGCCGGGCATCACCATACCCTGGACTCCGGCAGGGGAGGACACATGGTACTGACAACCTGCAGATACAC
ATACTCAGAGTGGCACAGTTTCACTCAACCCGACTTGGTGAAGACTCCATTAGAGGACACACTGGT

ACGCGTACGCGGCCGCTCGAGCAGAACTCATCTCAGAAGAGGATCTGGCAGCAATGATATCCTGGATT
ACAAGGATGACGACGATAAGGTTTAA

Protein Sequence: >MR231239 representing NM_001291809
 Red=Cloning site Green=Tags(s)

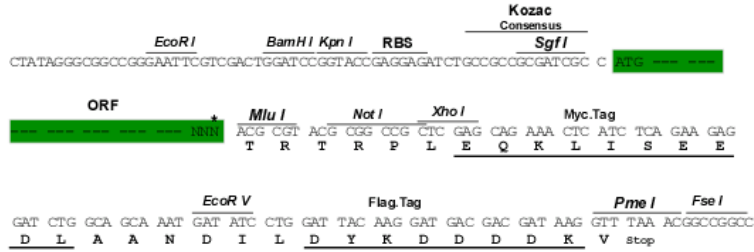
MVVPEFRSPQCRALCTKLLLTLWVFSFVGEACKKVTFFHVPSTLEADKIIIGRVSLKECLSSADGIMPSPDP
 FRVLDDGSVYPTRAVVL SDEKRSFTIQLSDSKMQTQKEIPVILEHKKKVLKRRHTKETVLRSSKRRWAPI
 PCSMQENSLGPFPLFLQQVQSDAAQNYTVFYISGRGADQEPLNFFFIERDTGNLYCTRPVDREEDVDFD
 LIAYASTADGYSADLPLPLPIKIEDENDNYPLFTEAIYAFEVPEGSRLGTVVGTVCATDKDEPDTMHTRL
 KYSILEQTTPSPGLFSVHPDTGVITTVSHYMDREVVDKYKLIMKVQDMNGQFFGLISTSTCIITVQDSND
 NAPTFRQNTYETAVEENTYNVEILRIPVDDKDMINTANWKANFTILKGNENGWFKITTDPTVNEGVL CVV
 KPLDYEENRQVTLEIGVNNEAPFIKDVANRIPTMNRAMVTVHVVDQNEGPECKPPEQYVRIKENS AVGSK
 INGYKAYDPETKNSNGLRYKKLQDPKDWSIEEVSGLLTISKTL DREIMAPRNDMYNITVMAIDQEGKSC
 TGT LAVNI EDVNDNAPEIIQDYIVICKPKMGYTDISAVDPDEPIHGPPFQFN LANTSPEVNRIWTLNQVN
 DTAARLSYQKTADVQIYNVPVTVKDRAGQSATKILRVNLCDC THPSQCPLRSRSAGITLGKWAILAILLG
 IALLFSVLLTLVCGVVTARKGKHFPEDLAQQNLIISNTEAPGDDRVC SANGFTTHTANNSSQGFCGTMGS
 GMRNGGQETIEMMKGHQTL DSCRVAGHHHTLDSGRGGHMDTDNCRYTYSEWHSFTQPRLGEDSIRGHTG

TRTRPLEQKLI SEEDLAANDILDYKDDDDKV

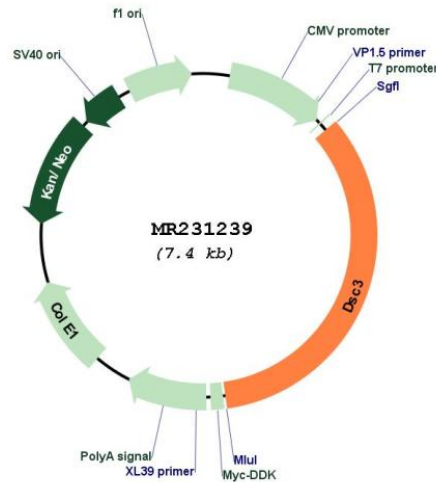
Restriction Sites: Sgfl-Mlul

Cloning Scheme:

Cloning sites used for ORF Shuttling:



* The last codon before the Stop codon of the ORF

Plasmid Map:


ACCN: NM_001291809

ORF Size: 2517 bp

OTI Disclaimer: The molecular sequence of this clone aligns with the gene accession number as a point of reference only. However, individual transcript sequences of the same gene can differ through naturally occurring variations (e.g. polymorphisms), each with its own valid existence. This clone is substantially in agreement with the reference, but a complete review of all prevailing variants is recommended prior to use. [More info](#)

OTI Annotation: This clone was engineered to express the complete ORF with an expression tag. Expression varies depending on the nature of the gene.

Components: The ORF clone is ion-exchange column purified and shipped in a 2D barcoded Matrix tube containing 10ug of transfection-ready, dried plasmid DNA (reconstitute with 100 ul of water).

Reconstitution Method:

1. Centrifuge at 5,000xg for 5min.
2. Carefully open the tube and add 100ul of sterile water to dissolve the DNA.
3. Close the tube and incubate for 10 minutes at room temperature.
4. Briefly vortex the tube and then do a quick spin (less than 5000xg) to concentrate the liquid at the bottom.
5. Store the suspended plasmid at -20°C. The DNA is stable for at least one year from date of shipping when stored at -20°C.

RefSeq: [NM_001291809.1](#), [NP_001278738.1](#)

RefSeq Size: 5348 bp

RefSeq ORF: 2520 bp

Locus ID: 13507

UniProt ID: [P55850](#)

Cytogenetics: 18 11.11 cM

MW: 94.2 kDa

Gene Summary: This gene encodes a member of the cadherin family of proteins that mediates adhesion in desmosomes. Together with desmogleins, the encoded protein forms the transmembrane core of desmosomes, a multiprotein complex involved in cell adhesion, organization of the cytoskeleton, cell sorting and cell signaling. Mice lacking the encoded protein exhibit a pre-implantation lethal phenotype. This gene is located in a cluster of desmosomal cadherin genes on chromosome 18. This gene encodes distinct isoforms, some or all of which may undergo similar processing to generate the mature protein. [provided by RefSeq, Jul 2016]