

Product datasheet for **MR231210**

Kcnh2 (NM_001294162) Mouse Tagged ORF Clone

Product data:

Product Type:	Expression Plasmids
Product Name:	Kcnh2 (NM_001294162) Mouse Tagged ORF Clone
Tag:	Myc-DDK
Symbol:	Kcnh2
Synonyms:	AI326795; ERG1; LQT; Lqt2; M-erg; Merg1; merg1a; merg1b
Vector:	pCMV6-Entry (PS100001)
E. coli Selection:	Kanamycin (25 ug/mL)
Cell Selection:	Neomycin



[View online »](#)

ORF Nucleotide Sequence:

>MR231210 representing NM_001294162
 Red=Cloning site Blue=ORF Green=Tags(s)

TTTTGTAATACGACTCACTATAGGGCGGCCGGGAATTCGTCGACTGGATCCGGTACCGAGGAGATCTGCC
 GCC**GCGATCGCC**

ATGGCGATTCCAGCCGGGAAGGAGAGCAGGACAGGGGCTCTGCAGCCAGGGCCAGAAAGCCGGGTGA
 GCGGGCAGTGCGCATCTCCAGCCTGGTGGCCAGGAGTCTGTCTTGGGAGCAGATGTGCTGCCTGA
 GTATAAGCTGCAGGCCCAAGAATCCACCCTGGACCATCCTCCACTACAGCCCTTCAAGGCGGTGTGG
 GACTGGCTCATCTGCTGCTGGTCTACACGGCAGTCTTACACCGTACTCGGCCCTTCTGCTGA
 AGGAGACTGAAGATGGGTCCAAGCCCCTGACTGTGGCTACGCTGCCAGCCCCTGGCTGTAGTGGACCT
 CATCGTGGACATCATGTTCAATTGTGGACATCCTTATCAATTTCCGTACCACCTATGTTAATGCCAACGAG
 GAGGTGGTTAGCCATCTGGCCGATTGCTGTGCACTACTTCAAGGGCTGGTTTCTCATTGACATGGTGG
 CTGCCATCCCCTTCGACCTGCTCATCTTGGCTCTGGCTCCGAGGAGCTGATCGGGCTGCTGAAAATGC
 GAGGCTGCTGCGGCTGGTGGCGTGGCTCGGAAGCTGGACCGCTACTCGGAGTACGGGGCAGCAGTCTC
 TTCTGCTCATGTGCACCTTCGCCCTCATTGCGCACTGGTTGGCCTGCATCTGGTACGCGATCGGCAACA
 TGGAAACAGCCTCACATGGACTCACACATCGGCTGGCTGCACAACCTGGGGCAGCAGATCGGCAAGCCCTA
 CAACAGCAGCGGCTGGGAGGCCCTCCATCAAGGACAAGTATGTACAGCGCTCTACTTCACTTACAGC
 AGCCTCACAGCGTGGGCTTTGGCAATGTCTCTCCAACACCAACTCAGAGAAGATCTTCTCCATCTGTG
 TCATGCTCATTGGCTCCCTCATGTATGCCAGCATCTTCGGCAACGTGTCCGCCATCATCCAGCGGCTGA
 CTCGGGCACGGCCGCTACCACACAGATGCTCCGGTGGGGAGTTTATCCGCTTTCACCAGATTCCC
 AACCCATTACGCCAGCCTCGAGGAGTACTTCCAGCATGCTTGGTCTACACCAATGCCATCGACATGA
 ACGGGTGTGAAGGGTCCCTGAGTGCCTCCAGGCTGACATCTGCCTACACCTGAACCGCTCGCTGCT
 GCAGCATTGCAAGCCATTCCGAGGGGCCATAAAGGCTGCCTGAGGGCGCTGGCTATGAAGTTCAAGACC
 ACACATGCACCACCAGGGGACACACTAGTGCACGCGGGGACCTGCTTACTGCCCTCTACTTTCATCTCCA
 GGGGCTCCATCGAGATCTGCGGGTGTGTCTGGTGGCCATCTTGGGAAGAAGCAGACATCTTGGAGA
 GCCTCTGAACCTATATGCCCGTCTGAAAGTCCAATGGGGATGTGCGGGCCCTCACGACTGTGACCTG
 CACAAGATCCATCGTGTACTTGTGGAGGTGTGGACATGTATCCCGAGTTCTCAGATCACTTTTGGT
 CTAGCCTGGAGATCACCTTCAACCTTCGAGATACCAACATGATTCCTGGCTCCCCAGGCAGTGCAGAACT
 AGAGAGCGGCTTAAACAGGCAACGCAAGCGCAAATGTCATTCCGAGGGGTACAGACAAGGACACAGAG
 CAGCCAGGGGAGGTGTCAGCCCTGGGGCAAGGCCCTGCCCGAGTTGGGCCAGGGCCGAGTTGCCGGGGAC
 AGCCGGGAGGGCCATGGGGGAGAGCCATCCAGCGGCCCTCCAGCCCAGAGAGCAGTGAAGATGAGGG
 CCCTGGTTCGACGCTCCAGTCCCCTCCGCTGGTGCCTTCTCCAGCCCCAGGCCTCCGGGAGACCCCCCA
 GGTGGGGAGCCTTTGACAGAGGATGGGGAGAAAAGTGACACCTGTAATCCCTTGTGAGGTGCCTTCTCTG
 GGGTGTCCAATATTTTTCAGCTTCTGGGGGACAGTCCGGGGCGCCAGTACCAGGAGTTGCCTCGATGCC
 TGCCCCCTGCCCCAGCCTCCTCAACATCCCCTTGTCTAGCCCTGGTGGCGATCCCGGGGTGATGTGGAG
 AGCAGGCTGGACGCACTCCAGAGACAGCTGAACAGGCTGGAAACCCGGCTAAGTGCAGACATGGCCACTG
 TCCTACAGCTGCTACAGAGGCAAATGACCCTGGTCCCTCCTGCCTACAGTGTGTGACCACCCCTGGGCC
 CGGCCCCACTTCGCATCCCCTTTGTTGCCTGTGCGCCCTGTCCCCTCTCACCTGACTCGCTTCT
 CAGGTTTTCCAGTTCGTGGCGTTTGGAGGCTTCTGCAGGAGCCCAGAGCTCCCCAAGATGGCCCCA
 CTCGACGCTCTCCCTGCCCGCCAGCTGGGGGCCCTTACCTCCAGCCCCTGCACAGACATGGCTCAGA
 TCCAGGCAGT

ACGCGTACGCGGGCGCTCGAGCAGAACTCATCTCAGAAGAGGATCTGGCAGCAAATGATATCCTGGATT
 ACAAGGATGACGACGATAAGGTTTAA

Protein Sequence: >MR231210 representing NM_001294162
 Red=Cloning site Green=Tags(s)

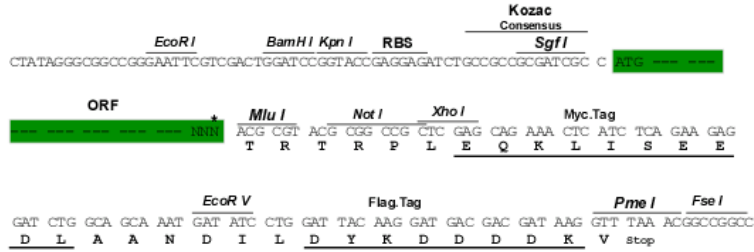
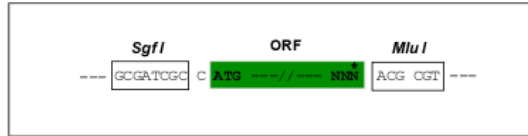
MAIPAGKESRTGALQPRAQKGRVRRRAVRISLVAQEVLSLGADVLPEYKLQAPRIHRWTILHYSFKAVW
 DWLILLVITYTAVFTPYSAFLLKETEDGSQAPDCGYACQPLAVVDLIVDIMFIVDILINFRTTYVNANE
 EVVSHPGRIAVHYFKGWFLIDMVAIIPFDLLIFGSGSEELIGLLKTARLLRVRVARKLDRYSEYGA AVL
 FLLMCTFALIAHWLACIWIYAIGNMEQPHMDSHIGWLHNLGDQIGKPYNSSGLGGPSIKDKYVTALYFTFS
 SLTSVGFGNVSPNTNSEKIFSICVMLIGSLMYASIFGNVSAIIQRLYSGTARYHTQMLRVREFIRFHQIP
 NPLRQRLEEFYQHAWSYTNGIDMNAVLKGFPECLQADICLHLNRSLLQHCKPFRGATKGCLRALAMKFKT
 THAPPGDTLVHAGDLLTALYFISRGSIEILRGDVVVAAILGKNDIFGEPLNLYARPGKSNQDVRLTYCDL
 HKIHRDDLLEVLDMYPEFSDFWSSLEITFNLRDTNMIPGSPGSAELES GFNRQRKRLSFRRTDKDTE
 QPGEVSALGQGPARGPGPSCRQPGGPWGESPPSGPSSPESEDEGPRSSPLRLVPFSSPRPPGDPP
 GGEPLTEDGEKSDTCNPLSGAFSGVSNIFSWGDSRGRQYQELPRCPAPAPSLLNIPSSPGRRSRGDVE
 SRLDALQRQLNRLLETRLADMATVQLLQRQMTLVPPAYSAVTTPGPGPTASPLLPVGPVPTLTLDSL
 QVSQFVAFEELPAGAPELPQDGPTRRLSLPGQLGALTSQPLHRHGSDPGS

TRTRPLEQKLI SEEDLAANDILDYKDDDDKV

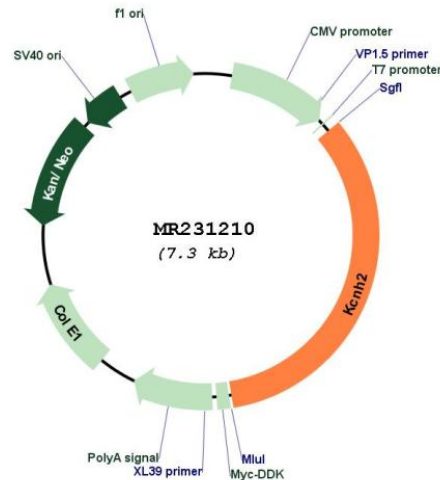
Restriction Sites: Sgfl-MluI

Cloning Scheme:

Cloning sites used for ORF Shuttling:



* The last codon before the Stop codon of the ORF

Plasmid Map:


ACCN: NM_001294162

ORF Size: 2460 bp

OTI Disclaimer: The molecular sequence of this clone aligns with the gene accession number as a point of reference only. However, individual transcript sequences of the same gene can differ through naturally occurring variations (e.g. polymorphisms), each with its own valid existence. This clone is substantially in agreement with the reference, but a complete review of all prevailing variants is recommended prior to use. [More info](#)

OTI Annotation: This clone was engineered to express the complete ORF with an expression tag. Expression varies depending on the nature of the gene.

Components: The ORF clone is ion-exchange column purified and shipped in a 2D barcoded Matrix tube containing 10ug of transfection-ready, dried plasmid DNA (reconstitute with 100 ul of water).

Reconstitution Method:

1. Centrifuge at 5,000xg for 5min.
2. Carefully open the tube and add 100ul of sterile water to dissolve the DNA.
3. Close the tube and incubate for 10 minutes at room temperature.
4. Briefly vortex the tube and then do a quick spin (less than 5000xg) to concentrate the liquid at the bottom.
5. Store the suspended plasmid at -20°C. The DNA is stable for at least one year from date of shipping when stored at -20°C.

RefSeq: [NM_001294162.1](#), [NP_001281091.1](#)

RefSeq Size: 3193 bp

RefSeq ORF: 2463 bp

Locus ID: 16511

UniProt ID: [O35219](#)

Cytogenetics: 5 10.94 cM

MW: 90.5 kDa

Gene Summary: Pore-forming (alpha) subunit of voltage-gated inwardly rectifying potassium channel. Channel properties are modulated by cAMP and subunit assembly. Mediates the rapidly activating component of the delayed rectifying potassium current in heart (IKr) (By similarity).
[UniProtKB/Swiss-Prot Function]