

Product datasheet for **MR231209**

Rabep1 (NM_001291141) Mouse Tagged ORF Clone

Product data:

Product Type:	Expression Plasmids
Product Name:	Rabep1 (NM_001291141) Mouse Tagged ORF Clone
Tag:	Myc-DDK
Symbol:	Rabep1
Synonyms:	Rab5ep; rabaptin-5; rabaptin-5alpha
Vector:	pCMV6-Entry (PS100001)
E. coli Selection:	Kanamycin (25 ug/mL)
Cell Selection:	Neomycin



[View online »](#)

ORF Nucleotide Sequence:

>MR231209 representing NM_001291141
 Red=Cloning site Blue=ORF Green=Tags(s)

TTTTGTAATACGACTCACTATAGGGCGGCCGGGAATTCGTGACTGGATCCGGTACCGAGGAGATCTGCC
 GCC**CGCATCGCC**

ATGGCGCAGCGGGCCCGCTCCCAGCCTGACGAGGATCTGAAGAGGCAAAATGCAGTATTGCAAGCTG
 CACAGGACGATTTGGGTACCTTCGACACAGCTGTGGGAGGCTCAGGCAGAGATGGAGAACATTAAGGC
 AATTGCCACAGTCTCTGAGAATACTAAGCAAGAAGCTATAGATGAAGTTAAAAGGCAATGGAGAGAAGAA
 GTTGCTTCACTTCAGGCTATAATGAAAGAGACAGTCCGTGACTATGAGCATCAGTTTCACCTGAGGCTGG
 AGCAGGAGCGAGCACAGTGGGCACAGTATCGAGAATCTGCAGAGCGGAAATAGCTGACTTAAGAAGAAG
 GTTGTCTGAAGGTCAAGAGGAAGAAAATTTAGAAAATGAAATGAAAAAGGCCAAGAGGATGCTGAAAAG
 CTTGTTCTGTCGTGATGCCATGGAGAAGGAAATTCAGCTCTGAAAGATAAACTGACAGAAGCTGAAG
 ACAAGATTAAGAGCTGGAGGCCTCAAAGTTAAGGAGCTGAATCATTATCTGGAGGCCGAGAAGCTTTG
 CAGGACTGACCTGGAGATGTACGTAGCTTTTTGAACACTCAGAAATCTGTGCTACAGGAAGATGCTGAG
 AAATTGAGGAAAAGACTGCATGAAGTTTCCCATCTCTTGAACAAGAACGACAACAACACACCAGTTAA
 AGCATACATGGCAGAAGGCCAACGACCAGTTTCTGGAATCTCAGCGTTTCTGATGAGAGACATGCAGAG
 AATGGAGATTGTGTTAACTTCGGAACAGCTCCGACAAGTTGAAGAATAAAGAAGAAAGACCAGGAGGAG
 GATGAACAACAAAGGGTCAATAAGAGAAAAGATAACAAGAAAACAGATACCGAAGAAGAAGTAAAAATAC
 CAGTAGTGTGTGCTTTAACTCAAGAAGAATCTTCAACCCATTATCAAATGAAGAGGAGCATTTAGACAG
 CACCCATGGGTGAGTCCATTCTTGGATGCAGACTTGTGTTACCATCTGGAGATCCATTAGTAAATCG
 GACAATGACATGTTTAAAGATGGACTCAGGAGAGCTCAGTCTACAGACAGCTTGGAACTCAAGCTCAT
 TGCAATCCAAGCTTTAGGCTATAACTACAAGCGAAAATCTGCTGGAAAATTTGGATGAGTCGGATTTTGG
 ACCACTGGTTGGAGCAGATTCTGTGCTGAGAACTTTGATACTGTGTCCTTGGGTCAGTGCAGATGCCA
 AGTGGATTTATGTTAACCAGATCAAGAAAGAGCAATTAAGGCAATGACACCTGAGCAGGAGGAGACAG
 CATCCCTCTCCAGTGTACCCAGGGTATGGAGAGTGCATATGTATCTCCAGTGTTACCGCTTAGT
 GAGTGAGACGGAATGGAATCTCTGCAGAAAGAGGTACATAATGCTGGAATAAGCTTGGTAGAGCTTGT
 GATATGTGTTCCAATTATGAAAAACAGTTACAAGGAATTCAGATTCAGGAAGCTGAAACAAGAGACCAGG
 TGAAAAAAGTGCAGTTAATGCTCAGGCAAGCTAATGACCAGCTTGAAGAAGCGATGAAAGAGAAGCAGGA
 GCTGGAGGACTTCTCAAGCAGAGTGGGAGGACTCAAGCCACCAGATATCTGCAGTGTGTTTAAAGAGCC
 CAAGCCTCTGAGGCTTACTTGAAGAGTTACAACAGAGCTTTTCCAAGCAAAGAGGACGTTTCAGGAGC
 AGATGGCGGTGCTGATGCAGTACAGTGAACAGGTTTCAGAAGAGTTGGTGAAGTTACAGAAAGACAACGA
 CAGCCTCCAGGGGAAGCAGACTTGCATGTGTCATTACAGCTAGCAGAAGACTTCATTCTCCAGACACT
 GTGGAGGTGCTCCGGGAAGTGGTTTTAAAATATCGTGAGAACATTGTTTATGTGCGCACAGCAGCAGACC
 ACATGGAAGAGAAGCTGAAGGCGGAAATACTTTTCTAAAAGAGCAAATTCAGCGGAACAGTGTTTAAA
 AGAAAACCTGGAAGAGACACTACAGCTGGAAATAGAAAAGTCAAGGAGGAAATAGCTTCCATTTCTAGT
 CTAAGAGCTGAATTAGAAAAGATAAAGGTTGAAAAGGGACAGTTGGAATCTACATTAAGAGAGAAGTCGC
 AACACTTGAGAGTCTCCAAGAAATGAAAGTTAATTTAGAGGAACAGTTAAAGAAAAGAACTGCTGCTAA
 GGCTACTGTTGAACAGCTCATGTTTGAAGAGAAGAACAAGCTCAGAGGTTGCAGACAGAATTAGATGTC
 AGTGAACAAGTACAGAGAGATTTTGTAAAATTTCTCAGACTTTCAGGTGCAGTTGGAGAGGATCCGGC
 AAGCAGACTCCTTGGAGAGGATCCGGGCTATTCTGAATGATACCAAAGTACAGACATTAACCAGCTCCC
 TGAGACA

ACGCGTACGCGGCCGCTCGAGCAGAACTCATCTCAGAAGAGGATCTGGCAGCAAATGATATCCTGGATT
 ACAAGGATGACGACGATAAGGTTTAA

Protein Sequence: >MR231209 representing NM_001291141
 Red=Cloning site Green=Tags(s)

```

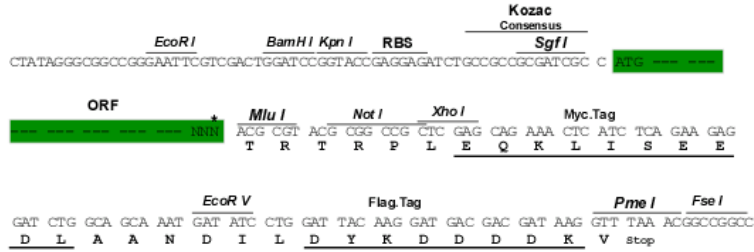
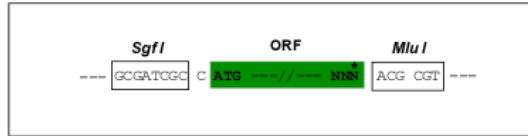
MAQPGPAPQPDEDLKRQNAVLQAAQDDLGHRLTQLWEAQAEMENIKAIATVSENTKQEAIDEVKRQWREE
VASLQAIMKETVRDYEYHQFHLRLEQERAQWAQYRESAEREIADLRRRLSEGQEEENLENEMKKAQEDA EK
LRSVVMPMEKEIAALKDKL TEAEDKIKELEASKVKELNHYLEAEKSCRTDLEMYVAVLNTQKSVLQEDAE
KL RKELHEVCHLLEQERQQHNQLKHTWQKANDQFLESQRLLMRDMQRMEIVLTSEQLRQVEELKKKQDQEE
DEQQRVNRKDNKKTDEEEVKIPVVCALTQEESSTPLSNEEEHLDSTHGSVHSLDADLM LPSGDPFSKS
DN DMFKDGLRRAQSTDSLGTSSSLQSKALGYNYKAKSAGNLDESDFGPLVGADSVSENFDTVSLGSLQMP
SGFMLTKDQERA IKAMTPEQEETASLLSSVTQGMESAYVSPSGYRLVSETEWNLLQKEVHNAGNKLGRRC
DMCSNYEKQLQGIQIQEAETRDQVKKLQMLRQANDQLEKTMKEKQELDFLKQSAEDSSHQISALV LRA
QASEVLLLEELQQSFSQAKRDVQEQMAVLMQSREQVSEELVRLQKDNDSLQGKHS LHVSLQLAEDFILPDT
VEV LRELVLKYRENIVHVRTAADHMEEKLKA EILFLKEQIQAEQCLKENLEETLQLEIENCKEEIASISS
LKAELERIKVEKGQLESTLREKSQQLES LQEMKVNLEEQLKKETA AKATVEQLMFEEKNKAQRLQTELDV
SEQVQRDFVKLSQTLQVQLERIRQADSLERIRAILNDTKLTDINQLPET
  
```

TRTRPLEQKLISEEDLAANDILDYKDDDDKV

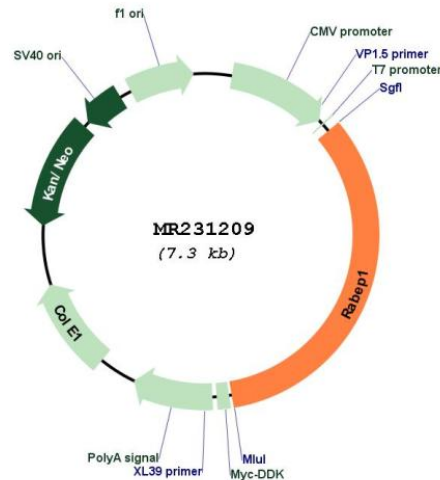
Restriction Sites: Sgfl-Mlul

Cloning Scheme:

Cloning sites used for ORF Shuttling:



* The last codon before the Stop codon of the ORF

Plasmid Map:


ACCN: NM_001291141

ORF Size: 2457 bp

OTI Disclaimer: The molecular sequence of this clone aligns with the gene accession number as a point of reference only. However, individual transcript sequences of the same gene can differ through naturally occurring variations (e.g. polymorphisms), each with its own valid existence. This clone is substantially in agreement with the reference, but a complete review of all prevailing variants is recommended prior to use. [More info](#)

OTI Annotation: This clone was engineered to express the complete ORF with an expression tag. Expression varies depending on the nature of the gene.

Components: The ORF clone is ion-exchange column purified and shipped in a 2D barcoded Matrix tube containing 10ug of transfection-ready, dried plasmid DNA (reconstitute with 100 ul of water).

Reconstitution Method:

1. Centrifuge at 5,000xg for 5min.
2. Carefully open the tube and add 100ul of sterile water to dissolve the DNA.
3. Close the tube and incubate for 10 minutes at room temperature.
4. Briefly vortex the tube and then do a quick spin (less than 5000xg) to concentrate the liquid at the bottom.
5. Store the suspended plasmid at -20°C. The DNA is stable for at least one year from date of shipping when stored at -20°C.

RefSeq: [NM_001291141.1](#), [NP_001278070.1](#)

RefSeq Size: 5311 bp

RefSeq ORF: 2460 bp

Locus ID: 54189

UniProt ID: [O35551](#)

Cytogenetics: 11 43.21 cM

MW: 94.8 kDa

Gene Summary: Rab effector protein acting as linker between gamma-adaptin, RAB4A and RAB5A. Involved in endocytic membrane fusion and membrane trafficking of recycling endosomes. Involved in KCNH1 channels trafficking to and from the cell membrane. Stimulates RABGEF1 mediated nucleotide exchange on RAB5A. Mediates the traffic of PKD1:PKD2 complex from the endoplasmic reticulum through the Golgi to the cilium (PubMed:25405894).[UniProtKB/Swiss-Prot Function]