

Product datasheet for **MR231205**

Zfp27 (NM_001285798) Mouse Tagged ORF Clone

Product data:

Product Type:	Expression Plasmids
Product Name:	Zfp27 (NM_001285798) Mouse Tagged ORF Clone
Tag:	Myc-DDK
Symbol:	Zfp27
Synonyms:	mkr-4; mszf76; Zfp-27
Vector:	pCMV6-Entry (PS100001)
E. coli Selection:	Kanamycin (25 ug/mL)
Cell Selection:	Neomycin



[View online »](#)

ORF Nucleotide
Sequence:

>MR231205 representing NM_001285798
Red=Cloning site Blue=ORF Green=Tags(s)

TTTTGTAATACGACTCACTATAGGGCGGCCGGGAATTCGTCGACTGGATCCGGTACCGAGGAGATCTGCC
GCCCGGATCGCC

ATGGATGTGACTATAGATTTTCAGCAGAGAGGAGTGGCAGCATCTAGATCTGCTCAAAGGAGTCTCTATC
GGGATGTGGTGCAGGAGACCTACAGTCACCTGCGCTCAGTGGAAGAACTACAGCAGATTGGTGACCAGAA
AAAGACCTACCAGCAAATAGGACATAAATCAGCGAGTGATATGGTTTTTCATCACGAAGACGCTGGGTGCA
GAGAGTTGCCATGACTACTCAGGCGTTAGGAAGGTGATTCATGTGAACTCATACTTGTCTCCCTCCCA
AGAGGCCACGTCCTGGGACCCACCTGAGGATGAGCCGAAGCATAGTTTCAGATTTACAGACTCATGATGA
AAGTAATGGGCTGAAGAGAACTAAAAGGATTACTGAATATGGTAAAATTTTCATCTGTATCAACTGAA
CATATTCTAACAGGAGAGAAATTACCGACCATAATCAATGTGGAAGTCCCGGTTATAACAATAC
CTTGTCATATCAGAAAATTCATACTGGGAGAAATCATATGAATGTGCTGAATTTGAAAGATTTTAC
CCAGAAGTCACAGCTCAGAGTACACGTGACGTCTCTACAGGAGAAAACTCTACGTGTGCGTCAATGT
GGGAAGGCATGTTCTCAGACGTGAGAGTTCCTCACACATCAAAAAACCCACACCGAGGAGAAAGCCCTATA
AATGCGGTGACTGTGGAAGTCTTTTTCCAAGTATCTTCTCTGTTTCAGGCACCGGAGGATCCACTG
AGAAAAGCTCTACGACTGTAGCCATTGTGGAAAGGCTTCTTACAACCTCAGACCTCAGGATACATCAG
AAGATCCATACAGGAGAGAAACGCCATGGCTGCGTCACTGTGGCAAAGCCTTCACAAAAAGTCCACAC
TGAGGATGCACCAAGATCCACACGGGCGAGAGGGCCTATGTCTGTATTGAGTGTGGACAGGCTTTTAT
CCAGAAGACACCTGGTGCACACCGAAGAATTCACACTGGAGAGAAGCCATACGCGTGTGACGGCTGT
GGCAAAGCCTTCTTTCCAAGTCCCACTCTGGTCCACCAGCAATTCCTCAAGAGTGAAGGCTTCAATGAG
TATCTTCGACCGTGCAGAAACCTTCAGCAGCGCTCCCAACCTCTTCCGCGTAAAGAAAGTTCAAATGAG
AGAGAAAATCGTCCATCTGCGCGGAGTGTGGAAAGGCTTTACCTACAGGTCGGAGCTAATCATTATCAG
AGAACTCACACGGGAGAGAAGCCTTATCAGTGCAGGACTGTGGCAAAGCCTTACCCAGAAAGTACAGCC
TCACCGTGCACCAAGAATCCACACGGGGGAGAAGTCTGTATGTGTGTGAAGTGCAGGCTAGCCTTCGT
GCAAAGGGCACACTTGGATGCACACAGGTGATTCACACTGGAGAAAAACCTTACCAGTGTGGTCAATGT
GGGAAATTTCTCACTTCCAAGTGCACCTCCACGTGCACAAGCGGATTCACACGGGGGAAAAACCTATG
TGTGCAGTAACTGTGGAAAGCCTTTGCCAACAGGTCAAATCTCATCACATCAGAAAACCTCATACAGG
GGAGAAAGCCTATGTCTGTGCAAGGTGTGGAAAGCATTCACTCAGAGGTGAGACCTGGTTACACACCAG
AGGATACATACCGGAGAGAAGCCATATGGGTGTAGCACCTGCGGAAAGCCTTTACCCAGAAATCACACC
TCAGTATACAGAGAAGATTCACACCGGAGAGAGACAGTACGGATGCCGAGACTGTGGGAAAGCCTTCAA
CCAGAAATCCATACTCATCGTGACCAAGAAAATCCACACGGGGGAGAAACCGCACGTGTGTGCCGAGTGC
GGGCGAGCTTTCATCCGCAAGTCCAACCTTCATACCCATCAGCGCATCCATACTGGCGAGAAACCTTATG
GATGCACCGACTGCGGCAAGTCTTTACCTCCAAGTGCAGCTCCTGGTGCACCGGCCAATCCACACCGG
CGAGAAACCTTACGTGTGTGCCGAGTGTGGAAAGCCTTTAGCGGCAGGTCAAATCTCAGCAAGCACCAG
AAGACTCACACTGGGAGAAAGCCGTACGCGTGTTCAGAGTGTGGAAAGTCTTACAGGCAGAAAGTCAAGC
TGATTACACACCAGAAATCCACACTGGGAGAAAGCCGTACGATTGCGGCGACTGCGGAAATCCTTAC
TAAGAAATCCCAGCTCCAAGTGCATCAGCGAATTCACACAGGAGAGAAGCCGTACAGATGTGCCGAGTGC
GGGAAGGCCTTACCGATAGGTCCAATTTGAATAAACATCAAACAACACACACCGGAGAGAAACCTTATA
AGTGTGTAGTCTGTGGAAAGCCTTTGTGCAGAAGTCACTGCTCAGCATTATGAGAATGTTACACCTC
GGCAGTA

AGCGGACCGACGCTACGCGGCCGCTCGAGCAGAACTCATCTCAGAAGAGGATCTGGCAGCAAATGATATCC
TGGATTACAAGGATGACGACGATAAGGTTTAA

Protein Sequence: >MR231205 representing NM_001285798
Red=Cloning site Green=Tags(s)

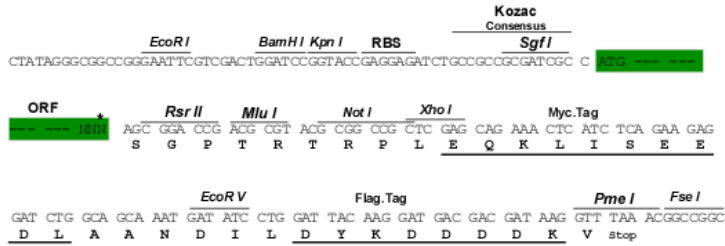
MDVTIDFSREEWQHLDPAQRSLYRDVVQETYSHLRSVEELQQIGDQKKTYYQIGHKSASDMVFITKTLGA
ESCHDYSGVRKVIHVNSYIVLPPKRPRHWDPPEDEPKHSSDLQTHDESNGLKRTKRITTEYKISSCINTE
HILTGEKLPDHNQCGKVLGYKQIPCQYQKIHTGEKSYECAEFGKIFTQKSQLRVHVTSPTEKLYVCVEC
GKACSQTSEFLTHQKHTREKPYKCGDCGKSFQVSSLFRHRIHTGEKLYDCSHCGKGFSYNSDLRIHQ
KIHTGEKRHGCVDCGKAFTQKSTLRMHQKIHTGERAYVCIECGQAFIQKTHLVAHRIHTGEKPYACDGC
GKAFLSKSPLLHQRHSRVRPCVSLDRAKPFSSAPNLLPRKKVQMKREKSSICAECGKAFTYRSELIHQ
RHTHTGEKPYQCGDCGKAFTQKSALTVHRIHTGEKSYVCVKGLAFVQRAHLDAHQVIHTGEKPYQCGHC
GKFFTSKSQLHVHKRIHTGEKPYVCSNCGKAFANRSNLITHQKHTHTGEKAYVCARCGKAFTQRSDLVTHQ
RIHTGEKPYGCGSTCGKAFTQKSHLSIHEKIHTGERQYGCRCGKAFNQKSLIVHQKIHTGEKPHVCAEC
GRAFIRKSNFITHQRIHTGEKPYGCTDCGKSFTSKSPLLVHRPIHTGEKPYVCAECGKAFSGRSNLKSHQ
KTHTHTGEKPYACSECGKSFQKSELITHHRIHTGEKPYDCGDCGKSFTKKSQQLQVHQRIHTGEKPYRCAEC
GKAFTDRSNLNKHQTTHHTGEKPYKCVVCGKGFVQKSVLSIHENVHTSAV

SGPTRTRPLEQKLISEEDLAANDILDYKDDDDKV

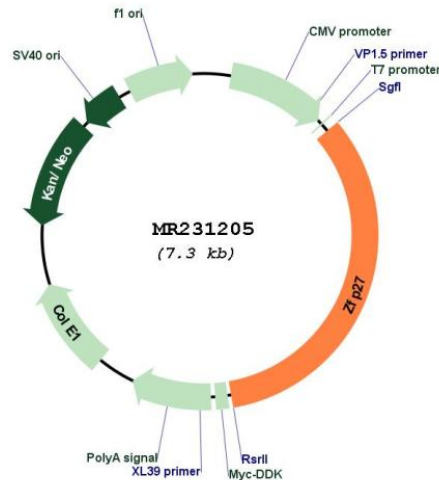
Restriction Sites: SgfI-RsrII

Cloning Scheme:

Cloning sites used for ORF Shuttling:



* The last codon before the Stop codon of the ORF

Plasmid Map:


ACCN: NM_001285798

ORF Size: 2457 bp

OTI Disclaimer: The molecular sequence of this clone aligns with the gene accession number as a point of reference only. However, individual transcript sequences of the same gene can differ through naturally occurring variations (e.g. polymorphisms), each with its own valid existence. This clone is substantially in agreement with the reference, but a complete review of all prevailing variants is recommended prior to use. [More info](#)

OTI Annotation: This clone was engineered to express the complete ORF with an expression tag. Expression varies depending on the nature of the gene.

Components: The ORF clone is ion-exchange column purified and shipped in a 2D barcoded Matrix tube containing 10ug of transfection-ready, dried plasmid DNA (reconstitute with 100 ul of water).

Reconstitution Method:

1. Centrifuge at 5,000xg for 5min.
2. Carefully open the tube and add 100ul of sterile water to dissolve the DNA.
3. Close the tube and incubate for 10 minutes at room temperature.
4. Briefly vortex the tube and then do a quick spin (less than 5000xg) to concentrate the liquid at the bottom.
5. Store the suspended plasmid at -20°C. The DNA is stable for at least one year from date of shipping when stored at -20°C.

RefSeq: [NM_001285798.1](#), [NP_001272727.1](#)

RefSeq Size: 3755 bp

RefSeq ORF: 2460 bp

Locus ID: 22689

UniProt ID: [P10077](#)

Cytogenetics: 7 B1

MW: 93.3 kDa

Gene Summary: May be involved in transcriptional regulation.[UniProtKB/Swiss-Prot Function]