

## Product datasheet for **MR231183**

### **AW551984 (NM\_001199556) Mouse Tagged ORF Clone**

#### **Product data:**

Product Type:	Expression Plasmids
Product Name:	AW551984 (NM_001199556) Mouse Tagged ORF Clone
Tag:	Myc-DDK
Symbol:	AW551984
Synonyms:	3222402N16
Mammalian Cell Selection:	Neomycin
Vector:	pCMV6-Entry (PS100001)
E. coli Selection:	Kanamycin (25 ug/mL)



[View online »](#)

ORF Nucleotide  
Sequence:

>MR231183 representing NM\_001199556  
Red=Cloning site Blue=ORF Green=Tags(s)

TTTTGTAATACGACTCACTATAGGGCGGCCGGGAATTCGTGACTGGATCCGGTACCGAGGAGATCTGCC  
GCC**GCGATCGCC**

ATGGTGC GTTCTGGCGGCTTACTACTAGCATAAGAGATCCAGTGGCACTGAAGAGCATTGCTGTGACTC  
TGCCATCAATGATTTTGTGGCTGGTGTGCTGCAACCCTAAACTATGAGAATGAAGAGAAATCACCCCT  
GGAGGCCCTTTCTTGTGTTCCCATGGATGAAGATTCTGCTGTCTACAGCTTTGAGGCCTTTGTGGATGGG  
AAGAAAATTGTGGCAGAACTTCAGGACAAGTACCAGGCCACAAAAGGTATGAAGAGGCCCTCTCTGGAG  
GATATCAGGCCTACTTATTGGAGGAAGACAAGTGTCCCGGGATGCTTTCTGTTGCAATGTGGGAACT  
GCAACCAGGGTCAAAAGTGTCACTGACCCTGAGATATGTGCAAGAACTCCCTTGGAAAGACGATGGGGCC  
CTGCGTTATGTGCTCCAGCCATCCTGAATCCTAGATACCATCTCTCGATGGACGTGAGGACAGTAATC  
TGGATATGAAGACCCCAATAGTCCCTTTGGAGGAATTGCCCTACACACTCAGCATGGTTGCCACTATCAG  
CTCCAGCTTGGTATCAGTACAATCCAATCCAAGTGTCCCTTGAATCCCATTGAGTACACTGGAGATAAC  
AAGACCTCAGCTCAGTTTCTTGGCTGAAGGACACAAATTTGACCGGGATGTGGAACCTCTGATTTTCT  
ATAGGAAGGTGCACAGTCCGAGCGTAGCTGTGGAGATGGGGATGTCTGGAAGGCCATCAGATAGTTAAT  
GGGAGCACCTTCTGCAATGGTGAAGTTTCTACCCAGATATCCCAGAAGTGGAGACCACAACAAAATGTGGA  
GAATTTGTGTTCTTATGGACCGTTCAAGAAGCATGAATAGCCCCATGAGTTCCAAGGACAAGTCTCAGC  
TGAGAATAGATGCTGCCAAGGAAACACTGATTCTGCTATTGAAGAGTTTGCCAATGGGCTGCTATTTCAA  
CATCTATGGATTTGGAGCCACCCATGAGGAGTTCTTTCCAGACAGTGTGATGTACAATCAGGAAACCATG  
CAGATTTGCTGTGAAGAAAGTAAAGCGTTTGTGGCGGATCTAGGAGGGACTGAACTTTTAACCCACTAC  
GGAAAATTTTAGGAAACCCCAATCCCAGGGCATCCCTTACAGGTCTTTGTCTTCACTGATGGAGAAT  
TGTTGAAAATTTTAGTGTAAATCAGAGAAGTTATGTTCCAGAGCAAGAAGCACAGATGTTTCTCATTGGC  
ATTGGAGAAGGGCCCTCCACTAGCTTAATCAAGAACCTTGCCCGGTGTGAGGGGCACTGCAGAGTTTA  
TCACAGGCAATGATAGGATGCAGTCCAAGGCCCTTAGATCTCTGAGGCGTTCTTTACAGTCTGTAGTAGA  
GGATGTCTCTCTGAGCTGGAATTTGCCTCCAAGATGTTTGCACCTATGCTATCTCCAGAACAACTTCT  
ATCTTTAGGGGTCAAAGGCTAATCATCTACAGCCTACTGATTGGAAAAATACAAAAGAAGAGGCAACCG  
GTGAAGTGTGCTCTCATATAAGCTTCATGGTAAAAGTTATGAGGAAAAAGTGACATTTTCTCTACAGCC  
AAAGCCTGATGACAACCTCACCATTACCGTCTTGCTGCAAAGTCCATGATCCAGTCCAAGACTTTGGC  
TTCAAGGAGACGTCATAATGTATAAGAGAGATGTGCTGGACATCAGCCTAGAGTCTGGAGTCATGAGTT  
CCTTTACAGCCTTTGTTGCCATCAACAAGGAGCTCAACGAGCCATCCAGGGGCCCTGGTGCATAGGGA  
TATCCCAAGGCCTATTCTCTTGGGTGCAGGTCTAATAGGCCCTCTGATGGTGGTTATCCAAAACTTTA  
TTCTGCGCCAGTGTCTCTGTAACCTCTGCCTCCATGGCTGAAGGGCTCAGGAAAATGTGTTGCTACAATAC  
TCATGCCAAATGGCACACCCCAACAGCGTCAGAACAGCCAGAAGAAGAAATGTGTGGTTCATACAGATAC  
TCGCCCTGAGTTGCCCACTGGCTAAATATGACAGTTACCCACAAGGGAGTAAGGAGCATAGTATTGCA  
CAGCTGATATATCTCCAGAATGCAGATGGTTCCTGGGATATGAATGAGGATTTAGCTAAGATTCTAAGTA  
CTAGTTTGAAGACATCACAGCTGCATGCCCTACTGAGGTGTTAGAACCCTCAGCCTGGGCTACAATGCT  
GGCCGTGATCTGGCTGCATGCCAATGGCAAGAAATTGAAGGACGAGTGGGAGCTTCTGGAAGAAAAGGCT  
GTGGTTTGGCTTACAATAATTCAGTCCGTGGTTTCAACAAGCTTATACGTACTGCCAACCAAGCTTTGA  
AGACATCTTTGAGCCCTCGATCTTCAAGTTA

**ACGCGT**ACGCGCGCGCTCGAGCAGAACTCATCTCAGAAGAGGATCTGGCAGCAAATGATATCCTGGATT  
ACAAGGATGACGACGATAAGGTTTAA

**Protein Sequence:** >MR231183 representing NM\_001199556  
Red=Cloning site Green=Tags(s)

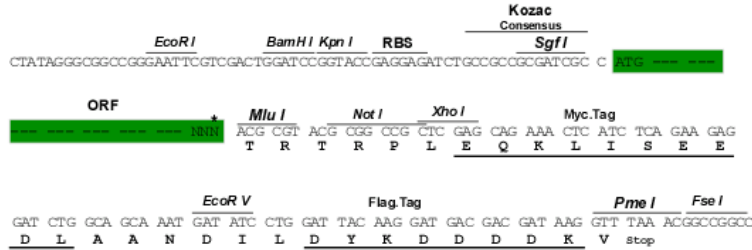
MVRSGLLTSIRDVVALKSIIVTSLINDFVAGVSATLNYENEEKSPLEAFFVFPMEDESAVYSFEAFVDG  
KKIVAEIQDKYQAHKRYEEALSGGYQAYLLEEDKCSRDFCCNVGNLQPGSKVSLTLRYVQELPLEDDGA  
LRYVLPAILNPRYHLSDGREDSNLDKMTPIVPLEELPYTL SMVATISSQLGISTIQSNCPNPIEYTGDN  
KTSAQVSLAEGHKFDRDVELLIFYRKVHSPSAVEMGMSGRPSDSL MGAPSAMVSFYDPDIPEVETTTKCG  
EFVFLMDRSRSMNSPMSSKDKSQLRIDAAKETLILLLKSLPMGCYFNIYGF GATHEEFFPDSVMYNQETM  
QIAVKKVKRLLADLGGTELLTPLRKIFRKPPIPGHPLQVVFVTDGEVVETFSVIREVMFQSKKHRCFSFG  
IGEGASTSLIKNLARVSGGTAEFITGNDRMQSKALRSLRSLQSVVEDVSLSWNLPPKMFAPMLSPEQTS  
IFRGQRLIIYSLLIGKIPKEEATGEVCLSYKLGKSYEEKVTFSLQPKPDDNLTIHRLAAKSMIQSKDFG  
FKETSLMYKRDVLDISLESGVMSSTAFVAINKELNEPIQGPLVHRDIPRPILLGAGPNRPSDGGYPKTL  
FCASAPVTLPPWLKGGKCVATILMPNGTPQQRQNSQKKKCVVHTDTRPELPHLAKYDSYPQGSKEHSIA  
QLIYLNADGSDMNEDLAKILSTSLEDITAACPTVLEPSAWATMLAVIWLHANGKELKDEWELLERKA  
VVWLHNNSVRGFNKLIRTANKLLKTSLSPSIFKL

TRTRPLEQKLI SEEDLAANDILDYKDDDDKV

**Restriction Sites:** Sgfl-MluI

**Cloning Scheme:**

Cloning sites used for ORF Shuttling:



\* The last codon before the Stop codon of the ORF

**ACCN:** NM\_001199556

**ORF Size:** 2412 bp

**OTI Disclaimer:** The molecular sequence of this clone aligns with the gene accession number as a point of reference only. However, individual transcript sequences of the same gene can differ through naturally occurring variations (e.g. polymorphisms), each with its own valid existence. This clone is substantially in agreement with the reference, but a complete review of all prevailing variants is recommended prior to use. [More info](#)
**OTI Annotation:** This clone was engineered to express the complete ORF with an expression tag. Expression varies depending on the nature of the gene.

**Components:** The ORF clone is ion-exchange column purified and shipped in a 2D barcoded Matrix tube containing 10ug of transfection-ready, dried plasmid DNA (reconstitute with 100 ul of water).

- Reconstitution Method:**
1. Centrifuge at 5,000xg for 5min.
  2. Carefully open the tube and add 100ul of sterile water to dissolve the DNA.
  3. Close the tube and incubate for 10 minutes at room temperature.
  4. Briefly vortex the tube and then do a quick spin (less than 5000xg) to concentrate the liquid at the bottom.
  5. Store the suspended plasmid at -20°C. The DNA is stable for at least one year from date of shipping when stored at -20°C.

**RefSeq:** [NM\\_001199556.1](#), [NP\\_001186485.1](#)

**RefSeq Size:** 4303 bp

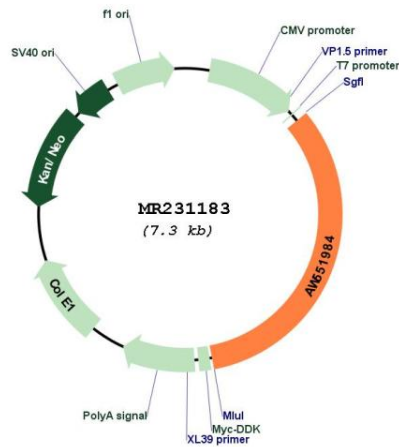
**RefSeq ORF:** 2415 bp

**Locus ID:** 244810

**Cytogenetics:** 9 A5.1

**MW:** 89.9 kDa

**Product images:**



Circular map for MR231183