

Product datasheet for **MR231104**

Sec23b (NM_001252544) Mouse Tagged ORF Clone

Product data:

Product Type:	Expression Plasmids
Product Name:	Sec23b (NM_001252544) Mouse Tagged ORF Clone
Tag:	Myc-DDK
Symbol:	Sec23b
Mammalian Cell Selection:	Neomycin
Vector:	pCMV6-Entry (PS100001)
E. coli Selection:	Kanamycin (25 ug/mL)



[View online »](#)

ORF Nucleotide
Sequence:

>MR231104 ORF sequence
 Red=Cloning site Blue=ORF Green=Tags(s)

TTTTGTAATACGACTCACTATAGGGCGGCCGGAATTCGTCGACTGGATCCGGTACCGAGGAGATCTGCC
 GCC**CGGATCGCC**

ATGGCAACGTATCTGGAATTCATTACAGCAGAATGAAGAACGAGATGGTGTGCGTTTCAGTTGGAACGTGT
 GGCTTCTAGCCGCTTGAAGCCACAAGAATGGTTGTGCCCTTGCTTGTCTCCTCACTCCTTTAAAGA
 ACGCCAGACTTACCTCCTGTACAGTATGAACCTGTGCTTTCAGTAGGCCTACCTGCAAAGCTATTCTC
 AATCCACTTTGTCAAGTGGATTACCGAGCAAACTCTGGGCTGCAATTTCTGTTTTCAAAGAAATCAGT
 TCCCTCCAGCATATGCAGGCATATCTGAGGTGAATCAACCTGCTGAATTGATGCCCCAGTTCTCCACAAT
 TGAGTACATGATCCAGAGAGGTGCTCGGTCTCCTCTGATCTTCTCTATGTGGTTGACACGTGTTTGGAG
 GAAGATGACCTTCAAGCACTCAAAGAGTCCCTGCAGATGTCTCTGAGTCTCCTTCTCCAGATGCCCTGG
 TTGGTCTCATCACTTTTGGGAGGATGGTGCAGGTTTCATGAGCTAAGCTGTGAAGGAATCTCCAAGAGCTA
 TGTCTTCCGAGGGACCAAGGATTTAACTGCAAAGCAAATACAGGAGATGTGGGCTGACCAAGTACGCC
 ATGCTGTGCAGCAAGCCAGACCTGCTCAACCTCAGGAGCAGCCTTTGTTTCCAGCAGATTTCTACAGC
 CCATTCACAAGATTGACATGAACCTCACAGATCTTCTCGGGGAGCTGCAGAGGGACCCATGGCCAGTAAAC
 TCAGGGGAAGAGACCACTGCGGTCCACTGGTGTGCTTTGTCCATTGCTGTTGGCTTGTGGAGGGGACT
 TTCCCAAATACTGGAGCCAGGATCATGTGTTCACTGGCGGGCCCCGACCCAAGGACCTGGCATGGTGG
 TTGGAGATGAGTTGAAGACTCCTATTCGTTCTGGCAGCAGATTGAGAAAAGATAACGCACGATTCATGAA
 GAAGGCAACCAAGCATTATGAGATGCTTGCTAATCGAAGTGTACAAATGGCCACTGCATTGATATTTAT
 GCTTGTGCCCTTGACCAAACTGGACTTCTGGAGATGAAGTGTGCTCAAAATCTTACAGGAGGCCACATGG
 TGATGGGAGATTCTTCAACACTTCTCTTTTCAAGCAGACATTCAAAGAATTTTTAGTAAAGACTTCAA
 CGGAGATTTCAGAATGGCGTTTGGTGTACGTTGGATGTAAGACCTCTCGGGAACCTGAAGATTGCAGGA
 GCCATTGGTCCATGCGTGTCTCTGAATGTGAAAGGGCCATGCGTGTGAGAAAATGAGCTTGGTGTGGTG
 GCACAAGTCAGTGAAGATCTGTGGCCTGGATCCCTCATCTACTCTTGGCATCTACTTTGAAGTTGTCAA
 TCAGCACAATGCTCCAGTTCCCCAGGGAGGCGAGAGGTGCCATCCAGTTTGTACACAGTATCAGCATTCC
 AGCACTCAGAAGCGCATCCGAGTGACCACCATTGCCCGCAATTGGGCAGATGCACAGAGTCAGCTGAGGC
 ACATAGAAGCAGCATTGACCAGGAGGCCGAGCAGTCTGATGGCACGGCTTGGAGTGTCCGCGCAGA
 GTCAGAGGAGGGCCTGACGTGCTTCGGTGGCTGGATCGGCAACTCATCAGACTGTGTCAGAAGTTTGGG
 CAGTATAACAAAGAAGACCTACGTCTTTCAGATTGTCAGACTCCTTTTCTGTATCCTCAGTTTATGT
 TCCATCTGAGAAGATCTCCATTTCTTCAAGTATTTAACAACAGTCTGATGAGTCCCTCCTATTATAGACA
 CCATTTTGCCCGCAGGATCTGACTCAGTCCCTCATTATGATCCAGCCATTCTCTATTCTTACTCCTTC
 CACGGACCACCAGAGCCTGTACTCCTGGACAGCAGTAGCATTCTAGCTGACAGAATTCTGCTGATGGATA
 CTTTCTTCCAAATGTGATTTACCTTGGTGGAGACCATAGCCAGTGGCGGAAGGCTGGATACCAGGACAT
 GCCCGAGTATGAAAACCTCAAGCACCTTCTCAGGCGCCCTGGATGATGCCCAAGAAATCTGCAAGCA
 CGCTTCCCAATGCCACGTTATATCAACACAGAGCATGGCGGCAGTCAGGCTCGGTTCTGTTGTCTAAAG
 TTAACCATCTCAGACACACAATAACCTGTATGCCTGGGGCAGGAACTGGAGCGCCCATCCTGACAGA
 CGATGTCAGCCTACAGGTGTTTCATGGATCACCTGAAGAAGCTGGCTGTGTCTAGTGCCTCT

ACGCGTACGCGGCCGCTCGAGCAGAAACTCATCTCAGAAGAGGATCTGGCAGCAAATGATATCCTGGATT
 ACAAGGATGACGACGATAAGGTTTAA

Protein Sequence: >MR231104 protein sequence
 Red=Cloning site Green=Tags(s)

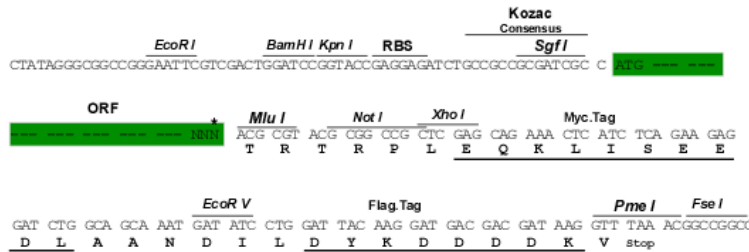
MATYLEFIQQNEERDGVRFSWNVWVSSRLEATRMVVPLACLLTPLKERPDLPVQYEPVLCRSPTCKAIL
 NPLCQVDYRAKLWACNFCFQRNQFPAYAGISEVNQPAELMPQFSTIEYMIQRGARSPLIFLYVVDTCLE
 EDDLQALKESLQMSLSLLPPDALVGLITFGRMVQVHELSCGISKSYVFRGTDLAKQIQEMLGLTKSA
 MPVQARPAQPQEQPFVSSRFLQPIHKIDMNLTDLLGELQRDPWPVTQGKRPLRSTGVALSIAVGLLEGT
 FPNTGARIMLFTGGPPTQGPVMVGDDELKTPIRSWHDIEKDNARFMKKATKHYEMLANRTATNGHCIDIY
 ACALDQTGLLEMCCPNLTGGHMVMDGFSNTSLFKQTFQRIKDFNGDFRMAFGATLDVKTSTRELKIAG
 AIGPCVSLNVKGPCVSENELGVGGTSQWKICGLDPSSTLGIYFEVVNQHNAPVPQGGRAIQFVTQYQHS
 STQKRIRVTTIARNWADAQSQLRHIEAAFDQEAALVLMARLGVFRAESEEGPDVLRWLDLRLCQKFG
 QYNKEDPTSFRLSDSFLYPQFMFHLRRSPFLQVFNNSPDESSYRHHFARQDLTQSLIMIQPILYSYSF
 HGPPPEVLLDSSSILADRILLMDTFFQIVIYLGETIAQWRKAGYQDMPEYENFKHLLQAPLDDAQEILQA
 RFPMPRYINTEHGGSQARFLLSKVNPSTHNNLYAWGQETGAPILTDVSLQVFMHLLKLAVSSAS

TRTRPLEQKLISEEDLAANDILDYKDDDDKV

Restriction Sites: SgfI-MluI

Cloning Scheme:

Cloning sites used for ORF Shuttling:



* The last codon before the Stop codon of the ORF

ACCN: NM_001252544

ORF Size: 2301 bp

OTI Disclaimer: The molecular sequence of this clone aligns with the gene accession number as a point of reference only. However, individual transcript sequences of the same gene can differ through naturally occurring variations (e.g. polymorphisms), each with its own valid existence. This clone is substantially in agreement with the reference, but a complete review of all prevailing variants is recommended prior to use. [More info](#)

OTI Annotation: This clone was engineered to express the complete ORF with an expression tag. Expression varies depending on the nature of the gene.

Components: The ORF clone is ion-exchange column purified and shipped in a 2D barcoded Matrix tube containing 10ug of transfection-ready, dried plasmid DNA (reconstitute with 100 ul of water).

Reconstitution Method:

1. Centrifuge at 5,000xg for 5min.
2. Carefully open the tube and add 100ul of sterile water to dissolve the DNA.
3. Close the tube and incubate for 10 minutes at room temperature.
4. Briefly vortex the tube and then do a quick spin (less than 5000xg) to concentrate the liquid at the bottom.
5. Store the suspended plasmid at -20°C. The DNA is stable for at least one year from date of shipping when stored at -20°C.

RefSeq: [NM_001252544.1](#), [NP_001239473.1](#)

RefSeq Size: 2792 bp

RefSeq ORF: 2304 bp

Locus ID: 27054

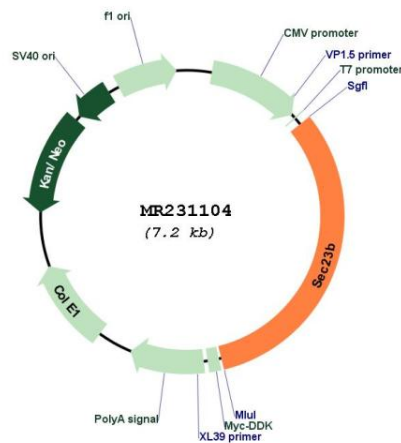
UniProt ID: [Q9D662](#)

Cytogenetics: 2 G1

MW: 86.4 kDa

Gene Summary: Component of the coat protein complex II (COPII) which promotes the formation of transport vesicles from the endoplasmic reticulum (ER). The coat has two main functions, the physical deformation of the endoplasmic reticulum membrane into vesicles and the selection of cargo molecules for their transport to the Golgi complex.[UniProtKB/Swiss-Prot Function]

Product images:



Circular map for MR231104