

Product datasheet for **MR231074**

Armc3 (NM_001271565) Mouse Tagged ORF Clone

Product data:

Product Type:	Expression Plasmids
Product Name:	Armc3 (NM_001271565) Mouse Tagged ORF Clone
Tag:	Myc-DDK
Symbol:	Armc3
Synonyms:	4921513G22Rik
Vector:	pCMV6-Entry (PS100001)
E. coli Selection:	Kanamycin (25 ug/mL)
Cell Selection:	Neomycin



[View online »](#)

**ORF Nucleotide
Sequence:**

>MR231074 representing NM_001271565
 Red=Cloning site Blue=ORF Green=Tags(s)

TTTTGTAATACGACTCACTATAGGGCGGCCGGGAATTCGTCGACTGGATCCGGTACCGAGGAGATCTGCC
 GCC**CGGATCGCC**

ATGGGTAAAAAGATAAGAAGGAAGTTGAACCTCCCCCTAAGGATGTGTTTGACCCAATCACAATTGAAA
 GCAAAAAGGCAGCCACTGTGGTCTGATGCTCAAGTCTCCAGAGGAAGACATCTTAGCCAAAGCCTGCGA
 AGCCATCTATAAGTTTGCTCTGAAAGGTGAGGAGAATAAAGCAACTCTCCTTGAACCTGGAGCTGTGGAG
 CCTTTGACCAAAGTCTCACCACGAAGACAAAAGTGAAGAAGAAATGCTATGATGATCTTTGGTATTC
 TGGCTTCTAACAGTGATGTTAAGAAGCTCTTGAGGGAGTTAGAAGTTATGAATTCAGTGATTGCTCAGCT
 CTCCCCAGAAGAAGAAGTTGTCATCCATGAGTTTGTAGTCTTTGTCTTGCGAACATGTCCTGAGAGTAC
 ACAGGGAAAGTCCAGATATTTGAGCATGGTGGACTGGAGCCGCTCATCAGACTGCTGAGCAGCTCGGACC
 CGGACGTGAAGAAGAATTCTATTGAGTGCATCTACAAGTTGGTACAGGATTTTCAGTGTCGGACTACACT
 TCAAGAGCTAAATGCAATCCCTCCGATATTAGAAGTTTGGAGTCAAGTACCCATTATCCAGCTGCTG
 GCTCTCAAAACCTTGGGTGTCATCACGTGCGATAAGGAGGCTCGGACGATGCTGAAGGAAAATCAAGGGC
 TGGACCACCTCACCAAGATCCTGGAGACCAAGGAAGTGAATGACCTTCATGTAGAAGCACTCTCAGTGAT
 AGCCAACTGCCTGGAGGATATGGACACCATGGTCTGATGCAGCAGACAGGGAGCCTCAAAAAGTCCCTG
 TCATTCGAGAGAGCTCCACAATTCCTGACATTCAGAAGAACGCAGCCAAAGCTATTGCCAAAGCAGCTT
 ATGACCTGAAAAATAGAAAAGTTTTTCACGAACAAGAGGTTGAAAAATGCCTGGTACTCTCCTGGGATC
 TGACAGCGATGGAACCAAGATTGCTGCTCCCAGGCTATTTACGCCCTGTGTGAGAACTTGAGCTGCAAA
 GAATTTTTCAACCCAGGGGATTCACAGATAGTTAGTTGCTCAGAAGTGACAATGAGGAGGTGAGGG
 AAGCTGCCGACTGGCCCTGGCAAACCTGACACCAGCAGCCCTGCAAATGCCAATGCTGCTGCAGAAGC
 AGATGCCATTGACCCGCTGATTAACATCCTGTCTGAGCAAGCGGGATGGAGCCATTGCCAATGCTGCCACA
 GTGCTGACCAACATGGCCACGCAAGAGCCTCTGCGAGCTATCATCCAGAACCATGAAATAATGCACGCAC
 TGTGGGCCCCCTGCACTCCACCAACACCTTGGTGCAGAGCACTGCAGCGCTCACCGTGGCTGCCACTGC
 CTGCGACGTGGAAGCCCGCACCCAGTTGAGGAACTGCGGTGGTCTGGTGGCCCTGGTTGGCTCCTGCAC
 TCCAAGAATGACGAGGTACGAAGGCATGCCAGCTGGGCTGTGATGGTCTGTGCCGGCGATGAGCCGATGG
 CAGTTGAGTTATGCAGGCTCGGGGCCCTAAATATCCTTGAAGAAATTAATCGATCATTAAAGTCGGAAAA
 TAAATTCAGTGAGGCAGCCTATAACAAATTGCTAAACAACAATCTTCCCTGAAATACAGCCAGACTGGC
 TATTTGTCATCAAGCAATATAATTAGCGATGGATTCTATGATTACGGTCGGATAAATCCTGGCACCAAC
 TTTTGTCACTGAAGGAACTGTGCTTACAGGAGCTGAATGATCAACGTGCTATTCTATTAGTCAACAATAA
 ATCTGACACCTCTCCACCTCCATCTATGGAGGATAAATCATCGGACGTTGGCTATGGACGAAGCATTCTT
 TCTTATCTTCTTAAGAAGGGGAAGCAAGGAGAAGGCCAATTTTCGTTTTAGTGCTATATTTGGATCTC
 CTACAGAAGAAAAATCCGAGCCAGCATCAGTACGGAACACTATCCTTAGCAGAGCTTTCACCAAAGAGAA
 GGGAGTAAGGAAAGGGAAAGGGAAAAAAGAAGAAGAGAAAGTGAAGAGGAAGAAGAGATCCTGGCACTG
 CCCAAGTTCACGGAAGGCAGCCCTGAGAAAGAGTGAACCCCTCCTCCTGACCCTGAGTTCTGTGTGATG
 TGCTGGAGGTGACCAAGTCGATACTGCCATTGTCAACCTTAAGGAGCAGATTGAGGTCTTGCCAAGCA
 CTGGCTGATAAAATCGGGG

ACGCGTACGCGGCCGCTCGAGCAGAAACTCATCTCAGAAGAGGATCTGGCAGCAAATGATATCCTGGATT
 ACAAGGATGACGACGATAAGGTTTAA

Protein Sequence: >MR231074 representing NM_001271565
 Red=Cloning site Green=Tags(s)

MGKKIKKEVEPPPDKVDFDPITIESKKAATVVMLKSPPEEDILAKACEAIYKFALKGEENKATLLELGAVE
 PLTKLLTHEDKTVRRNAMMIFGILASNSDVKKLLRELEVMSVIAQLSPEEEVVIHEFASLCLANMSVEY
 TGKVQIFEHGGLLEPLIRLLSSSDPDVKKNSIECIYNLVQDFQCRTTLQELNAIPPILLELRSEYPIIQLL
 ALKTLGVITCDKEARTMLKENQGLDHLTKILETKELNDLHVEALSVIANCLEDMDTMVLMQQTGSLKKVL
 SFAESSTIPDIQKNAAKAIAKAAYPDENRKVFHEQEVEKCLVTLLGSDSDGTKIAASQAISALCENLSCK
 EFFNTQGIPQIVQLLRSDNEEVREAAALALANLTTSSPANANAAAEADAIDPLINILSSKRDGAIANAAT
 VLTNMQEPLRAIIQNHEIMHALLGPLHSTNTLVQSTAALTVAATACDVEARTQLRNCGGVLPLVGLLH
 SKNDEVRRHASWAVMVCAGDEPMAVELCRLGALNILEEINRSLSRKNKFSEAAYNKLLNNNLKYSQTG
 YLSSSNIISDGFYDYGRINPGTKLLSLKELCLQELNDQRAILLVNNKSDTSPPPSMEDKSSDVGYSRIS
 SSSSLRRGSKEKANFRFSAIFGSPTEEKSEPAVRNTILSRAFTKEKGVKGGKGGKEEEKVEEEEEILAL
 PKFTEGSPEKEWNPPDPEFCVYVLEVTKSILPIVNLKEQIEVLAKHWLIKSG

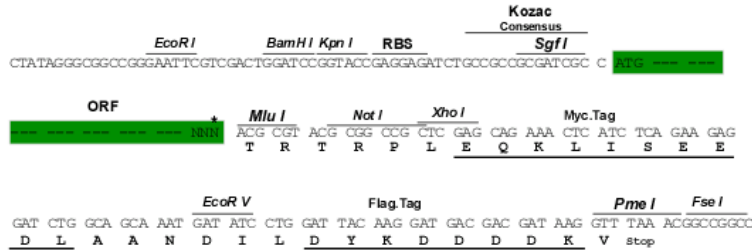
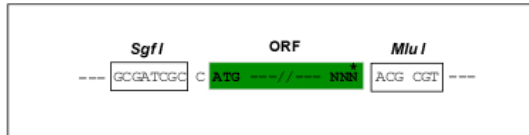
TRTRPLEQKLISEEDLAANDILDYKDDDDKV

Restriction Sites:

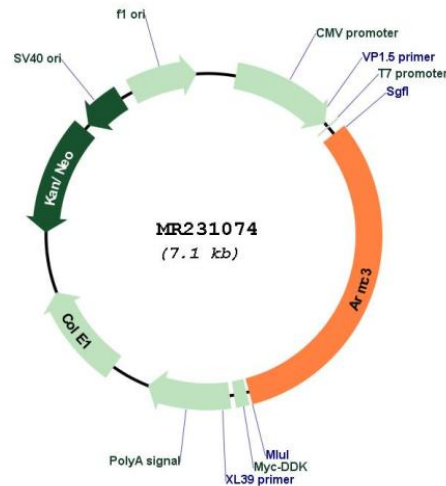
Sgfl-MluI

Cloning Scheme:

Cloning sites used for ORF Shuttling:



* The last codon before the Stop codon of the ORF

Plasmid Map:


ACCN: NM_001271565

ORF Size: 2259 bp

OTI Disclaimer: The molecular sequence of this clone aligns with the gene accession number as a point of reference only. However, individual transcript sequences of the same gene can differ through naturally occurring variations (e.g. polymorphisms), each with its own valid existence. This clone is substantially in agreement with the reference, but a complete review of all prevailing variants is recommended prior to use. [More info](#)

OTI Annotation: This clone was engineered to express the complete ORF with an expression tag. Expression varies depending on the nature of the gene.

Components: The ORF clone is ion-exchange column purified and shipped in a 2D barcoded Matrix tube containing 10ug of transfection-ready, dried plasmid DNA (reconstitute with 100 ul of water).

Reconstitution Method:

1. Centrifuge at 5,000xg for 5min.
2. Carefully open the tube and add 100ul of sterile water to dissolve the DNA.
3. Close the tube and incubate for 10 minutes at room temperature.
4. Briefly vortex the tube and then do a quick spin (less than 5000xg) to concentrate the liquid at the bottom.
5. Store the suspended plasmid at -20°C. The DNA is stable for at least one year from date of shipping when stored at -20°C.

RefSeq: [NM_001271565.1](#), [NP_001258494.1](#)

RefSeq Size: 2805 bp

RefSeq ORF: 2262 bp

Locus ID: 70882

Cytogenetics: 2 A3

MW: 83.2 kDa