

Product datasheet for **MR231060**

Mme (NM_001289462) Mouse Tagged ORF Clone

Product data:

Product Type:	Expression Plasmids
Product Name:	Mme (NM_001289462) Mouse Tagged ORF Clone
Tag:	Myc-DDK
Symbol:	Mme
Synonyms:	6030454K05Rik; C85356; CALLA; CD10; NEP; SFE
Mammalian Cell Selection:	Neomycin
Vector:	pCMV6-Entry (PS100001)
E. coli Selection:	Kanamycin (25 ug/mL)



[View online »](#)

ORF Nucleotide
Sequence:

>MR231060 representing NM_001289462
Red=Cloning site Blue=ORF Green=Tags(s)

TTTTGTAATACGACTCACTATAGGGCGGCCGGGAATTCGTCGACTGGATCCGGTACCGAGGAGATCTGCC
GCC**CGCATCGCC**

ATGGAAGATCAGAAAGTCAGATGGATATAACTGATATCAATGCTCCAAAGCCAAAGAAGAAACAGCGAT
GGACTCCCTGGAGATCAGCCTCTCTGTCTTGTCTTGCTCCTGACTATCATAGCCGGTGACAATGATCGC
TCTCTATGCAACCTATGATGATGGCATTGCAAAATCATCAGACTGCATAAAATCAGCTGCTCGACTGATT
CAGAATATGGATGCCTCTGTTGAGCCATGTACAGACTTCTTCAAGTATGCTTGTGGAGGCTGGTTGAAAC
GCAACGTCATTCCCGAGACCAGTCCCGATACAGTAATTTTGACATTTTAAAGAGATGAGCTAGAAGTCAT
TTTGAAAGATGTCCTTCAAGAACCACAAACTGAAGACATAGTAGCAGTGCAGAAAGCAAAAACCTTGTAC
AGATCGTGATAAATGAGTCTGCTATTGATAGCAGAGGCGGACAACCTCTACTCAAAGTGTACCAGATA
TATATGGTGGCCAGTAGCATCAGATAACTGGGATCAAACATATGGCACTTCTTGGACAGCTGAGAAATC
CATTGCACAAGTGAATTTAAATATGGGAAAAAGTCTCATTAAATTTTTTTGTTGGCAGTATGATAAG
AATTCTACCCAGCATATAATTCATTTTGACCAGCCTCGACTTGGCCTCCCTCCAGAGACTACTATGAGT
GCACTGGAATATATAAGAGGCTTGACAGCATATGTGGATTTTATGATTCTGTGGCCAGACTGATTCCG
TCAGGAACAAAGTTTGCCTATTGATGAAAACAGCTCTCTTTGAAAATGAATAAAGTTATGGAATTGGAA
AAAGAAATGGCAATGCTACAACATAACAGGACCCGAAATGACCCAATGCTGCTTTATAACAAAATGA
CATTGGCCAAGCTGCAGAAACATTTCCCTGGAGGTCAATGGGAAGTCAATCAGCTGGTCAAATTTTAC
AAATGAAATCATGTCAACTGTGAATATTAATATCAAAATGAGGAAGAAGTTGTTGTCTATGCTCCAGAA
TATTTAACCAAATTAAGCCTATTTACCAAAATTTCTCCAGAGATCTTCAAATTTAATGCTCCTGGA
GGTTCATAATGGATCTTGTAAAGCAGCCTCAGCCGAAACTACAAGGAGTCCAGAAATGCTTTCCGCAAGGC
CCTTTATGGGACTACATCAGAAACTGCAACATGGAGACGGTGTGCTAACTACGTCATGGGAATATGGAG
AATGCTGTGGGAGGCTTTATGTGGAAGCGCTTTTGTGGAGAGCAAGCACGTGTTGAAGACTTGA
TTGCACAAATCCGGGAAGTTTTTATCAGACTTTGGATGACCTTACTTGGATGGATGCTGAGACAAAAAA
GAAAGCTGAAGAAAAGGCCTTGGCAATTAAGAAAGGATTGGCTATCCTGATGACATCATTTCCAATGAG
AACAACTGAATAATGAGTATCTTGAGTTGAACTACAGGGAAGATGAATACTTTGAGAACATAATTCAAA
ATTTGAAATTCAGCCAAAGCAAGCAGCTAAAGAAGCTCCGAGAAAAAGTGGACAAAGATGAGTGGATAAG
TGGAGCAGCTGTAGTCAATGCATTTTATCCTCAGGCCGAAATCAGATAGTCTTCCCGCTGGCATTTTG
CAGCCCCATTCTCAGTCTCAGCAATCCAATCATTGAACTATGGGGCATCGGCATGGTCTATTGGAC
ATGAAATCACACATGGATTTGATGACAATGGAAGAAATTTCAATAAAGATGGAGACCTCGTTGACTGGT
GACGCAGCAGTCGGCAAATAATTTAAAGACCAATCCCAGTGTATGGTATACCAGTATGGAACTTTTCC
TGGGACCTAGCAGGTGGACAGCATCTCAATGGAATTAATACACTAGGAGAAAAACATTGCTGATAATGGAG
GTATTGGCCAAGCATACAGAGCCTATCAGAATTATGTTAAAAAGAATGGTGAAGAAAAATTAATCCCTGG
ACTTGACCTCAATCACAAACATATTTTCTGAACTTTGCCAGGTGTGGTGTGGGACCTACCGGCCA
GAGTATGCAGTCAATTTATTAACAGATGTACACAGTCTGGAATTTTCAAGTATTTGGGACTTTGC
AGAACTCTGCCGAGTTTGCAGATGCCTTTCATTGCCGCAAGAATTCATACATGAATCCAGAAAGGAAATG
TCGGGTTTGG

ACGCGTACGCGGCCGCTCGAGCAGAAACTCATCTCAGAAGAGGATCTGGCAGCAAATGATATCCTGGATT
ACAAGGATGACGACGATAAGGTTTAA

Protein Sequence: >MR231060 representing NM_001289462
 Red=Cloning site Green=Tags(s)

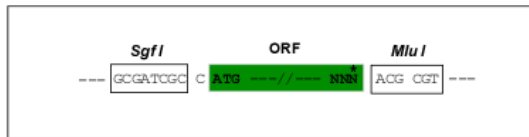
MGRSESQMDITDINAPKPKKQRWTPLEISLSVLVLLLTIIAVTMIALYATYDDGICKSSDCIKSAARLI
 QNMDASVEPCTDFFKYACGGWLKRNVIPETSSRYSNFDILRDELEVILKDVLPKPTEDI VAVQKAKTLY
 RSCINESAIDSRGGQPLLKLLPDIYGWVVASDNWDQTYGTSWTAEKSI AQLNSKYGKKVLINFFVGTDDK
 NSTQHI IHFDQPRLGLPSRDYECTGIYKEACTAYVDFMISVARLIRQEQLPIDENQLSLEMNKVMELE
 KEIANATTKPEDRNDPMLLYNKMTLAKLQNNFSLEVNGKSF SWSNFTNEIMSTVNINI QNEEEVVVYAPE
 YLTKLKPILTKYSPRDLQNLMSWRFIMDLVSSL SRNYKESRNAFRKALYGT TSETATWRRCANYVNGME
 NAVGRLYVEAAFAGESKHVVEDLIAQIREVFIQTLDDL TWMDAETKKAEEKALAIKERIGYPDDIISNE
 NKLNNYELELNYREDEYFENIIQNLKFSQSKQLK LREKVDKDEWISGAAYVNAFYSSGRNQIVFPAGIL
 QPPFFSAQQSNSLNYGGIGMVGHEITHGFDDNGRNFNKDGDLDVWWTQQSANNFKDQSQCMVYQYGNFS
 WDLAGGQHLNGLNTLGENIADNGGIGQAYRAYQNYVKKNGEEKLLPGLDLNHKQLFFLNFAQVWCCTYRP
 EYAVNSIKTDVHSPGNFRIIGTLQNSAEFADAFHCRKNSYMNPERKCRVW

TRTRPLEQKLI SEEDLAANDILDYKDDDDKV

Restriction Sites: SgfI-MluI

Cloning Scheme:

Cloning sites used for ORF Shuttling:



* The last codon before the Stop codon of the ORF

ACCN: NM_001289462

ORF Size: 2250 bp

OTI Disclaimer: The molecular sequence of this clone aligns with the gene accession number as a point of reference only. However, individual transcript sequences of the same gene can differ through naturally occurring variations (e.g. polymorphisms), each with its own valid existence. This clone is substantially in agreement with the reference, but a complete review of all prevailing variants is recommended prior to use. [More info](#)

OTI Annotation: This clone was engineered to express the complete ORF with an expression tag. Expression varies depending on the nature of the gene.

Components: The ORF clone is ion-exchange column purified and shipped in a 2D barcoded Matrix tube containing 10ug of transfection-ready, dried plasmid DNA (reconstitute with 100 ul of water).

Reconstitution Method:

1. Centrifuge at 5,000xg for 5min.
2. Carefully open the tube and add 100ul of sterile water to dissolve the DNA.
3. Close the tube and incubate for 10 minutes at room temperature.
4. Briefly vortex the tube and then do a quick spin (less than 5000xg) to concentrate the liquid at the bottom.
5. Store the suspended plasmid at -20°C. The DNA is stable for at least one year from date of shipping when stored at -20°C.

RefSeq: [NM_001289462.1](#), [NP_001276391.1](#)

RefSeq Size: 6088 bp

RefSeq ORF: 2253 bp

Locus ID: 17380

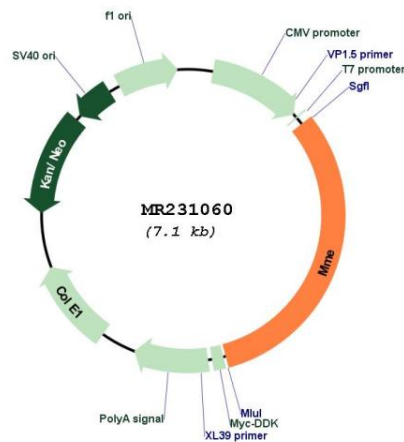
UniProt ID: [Q61391](#)

Cytogenetics: 3 29.97 cM

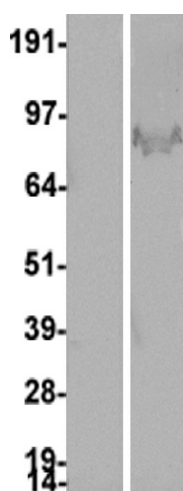
MW: 85.7 kDa

Gene Summary: Thermolysin-like specificity, but is almost confined on acting on polypeptides of up to 30 amino acids. Biologically important in the destruction of opioid peptides such as Met- and Leu-enkephalins by cleavage of a Gly-Phe bond. Able to cleave angiotensin-1, angiotensin-2 and angiotensin 1-9. Involved in the degradation of atrial natriuretic factor (ANF) (By similarity). Displays UV-inducible elastase activity toward skin preelastic and elastic fibers (PubMed:20876573).[UniProtKB/Swiss-Prot Function]

Product images:



Circular map for MR231060



Western blot validation of overexpressed Mme protein using anti-DDK antibody (Cat# [TA50011-100]). Left: Cell lysates from un-transfected HEK293T cells; Right: Cell lysates from HEK293T cells transfected with MR231060 using transfection reagent MegaTran 2.0 (Cat# [TT210002]).