

## Product datasheet for **MR231056**

### Sema3b (NM\_001291538) Mouse Tagged ORF Clone

#### Product data:

Product Type:	Expression Plasmids
Product Name:	Sema3b (NM_001291538) Mouse Tagged ORF Clone
Tag:	Myc-DDK
Symbol:	Sema3b
Synonyms:	LUCA; Se; sem; SemA; sema5; Sema; semaV
Mammalian Cell Selection:	Neomycin
Vector:	pCMV6-Entry (PS100001)
E. coli Selection:	Kanamycin (25 ug/mL)



[View online »](#)

**ORF Nucleotide  
Sequence:**

>MR231056 ORF sequence  
 Red=Cloning site Blue=ORF Green=Tags(s)

TTTTGTAATACGACTCACTATAGGGCGGCCGGGAATTCGTCGACTGGATCCGGTACCGAGGAGATCTGCC  
 GCC**CGGATCGCC**

ATGGGGCGGGCTGAGGCCCGCCATGATCCCAGGCCTGGCCCTTCTCTGGGTAGCAGGGCTAGGGGATA  
 CTGCCCTAACCTTCCCCGCTTCGGCTCTCCTTTCAAGAATTACAGGCCGGCATGGTGTCCGAACCTT  
 CAGGCTGGAGCGGACCTGCTGTTATGAAGCCTTGTGGTGGATGAGGAGCGTGGACGCCTGTTTGTGGGT  
 GCTGAGAACCACGTGGCTTCCCTCAGCCTGGACAACATCAGCAAGCGAGCCAAGAAGCTGGCCTGGCCCG  
 CCCCCGTGGAATGGCGTGAAGAAATGCAACTGGGCAGGGAAGGACATTGGTACCGAGTGCATGAACTTCGT  
 GAAGCTGCTGCACACCTACAACCACACCCACTTGTGGCCTGTGGCACAGGGGCTTTCCACCCAACCTGT  
 GCCTTTGTGGAGTGGGCCACCGCTGGAGGAACCCATGCTTCACTGGACCGGAGGAACTTGAGGACG  
 GCAAGGGGAAGACTCCTTATGACCCAAGGCATCGGGCTGCCTCGGTGCTGGTGGGGGAAGAAGTGTATTC  
 TGGGGTGACAGCAGACCTTATGGGCCGGGACTTTACCATCTTTGAAGCCTTGGTCAGAATCCGAGTCTC  
 CGAACAGAGCCCCATGATTCGCGCTGGCTCAATGAACCCAAGTTTGTCAAGGTCTTTTGGATCCCAGAGA  
 GTGAGAACCCTGATGACGATAAAATCTATTTCTTCCGCGAGTCCGCTGTGGAAGCAGCACCAGCAAT  
 GGGGCGCATGTCTGTGTCTCGTGTGGCCAGATCTGCAGGAATGACCTGGGTGGCCAGCGGAGCTTGGTC  
 AACAAATGGACCACATTTCTGAAGGCGCGGCTTGTGTGCTCAGTACCTGGAGTTGAGGGTACACCCACT  
 TTGACCAACTTCAGGATGTTTTCTTCTGTCTCCCGAGACCGCCAGACACCTTCTCTATGCTGTCTT  
 CTCCACCTCCAGTGGTGTCTTCCAGGGCTCTGCTGTGTGCGTGTACAGCATGAACGATGTGCGCCGAGCC  
 TTCTTGGGACCTTTTGTCAAAAGAGGGGCTACACACCAGTGGGTGTCTACCAGGGTGTGTCCCT  
 ACCCAAGACTGGCATGTGCCCCAGCAAGACTTTGGCACCTTCAGCTCCACCAAGGACTTCCAGATGA  
 CGTTATCCAGTTTGTCTCGGAACCACCTCTCATGTACAACCCAGTCTGCCCATGGGGGGCGCCCTCTC  
 TTCTTACAAGTGGGAGCTGGGTACACCTTCAACCAATCGCCGAGACCGAGTAGCAGCTGCCGATGGAC  
 ACTACGATGTTCTTTCATTGGTACAGATGTGGGCACAGTGTGAAAGTATCTCAGTCCCCAAAGGCAG  
 CCGACCTAATTCTGAAGGACTTCTCCTGGAAGAGCTGCAGGTGTTGAGGACTCTGCCGCTATCACCAGC  
 ATGCAAATCTCCTCTAAAAGGCAACAACCTACATAGCATCGCGCAGCGCAGTGGCCAGATTGCTTTGC  
 ATCGCTGCACTGCCCTAGGCCGCGCTGCGCAGAATGCTGCTTGGCCCGTATCCTTACTGCGCCTGGGA  
 TGGATCAGCTTGACACGCTTCCAGCCTACGGCCAAGAGACGGTCCGGAGGCAAGACATAAGGAATGGC  
 GACCCAGCACCTATGCTCTGGAGACTTCTCACTCTGTGCTGCTGGAGAAGAAGGTGTTGGGTGTGG  
 AGAGCGGCAGCGGTTTCTGGAGTGTGAGCCCCGCTCGCTCCAGGCGCATGTGCAGTGGACCTTCCAAGG  
 TGACGGGGAGGCAGCTCACACCCAGGTGCTGGCTGAGGAGAGAGTAGAGCGCACTGCGCGGGGGTGTCTG  
 TTGCGGGGGTGCGGCGCAGGACTCTGGCGTGTATCTTTGCGTGCAGGTTGAACAAGGCTTTTCAAC  
 CACTGCGTGCCTGGTGTGCATGTGTTGAGTGCGGCGCAGGCTGAACGACTGGCACGGGAGAGGAAGC  
 AGCCGCTCCTGCACCTCTGGCCCTAAACTCTGGTACCGGACTTTCTGCAGTTGGTGGAGCCAGGCGGT  
 GGCGGAGGTGCAAACTCCCTGCGAATGTGCCCGCCGACCCGGGACCACTCTGTGGCAGCAGATTAC  
 GTCGTAAGGGTCGCAACAGACGGATGCATGTCTGAGCTCCGTGCTGAGCGTGGACCACGTAGTGCAGC  
 TCACTGG

**ACGCGT**ACGCGGGCGCTCGAGCAGAAACTCATCTCAGAAGAGGATCTGGCAGCAAATGATATCCTGGATT  
 ACAAGGATGACGACGATAAGGTTTAA

**Protein Sequence:** >MR231056 protein sequence  
 Red=Cloning site Green=Tags(s)

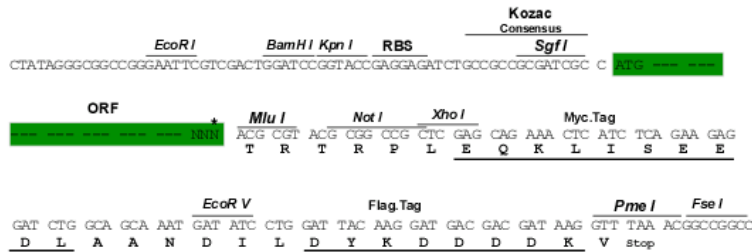
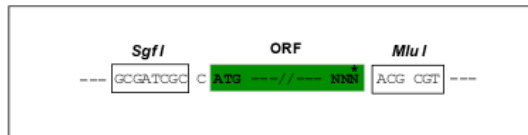
MGRAEAAAMIPGLALLWVAGLGDTAPNLPRLRFSQELQARHGVRTFRLERTCCYEALLVDEERGLFVG  
 AENHVASLSLDNISKRAKKLAWPAPVEWREECNWAGKDIGTECMNFVKLLHTYNHTHLLACGTGAFHPTC  
 AFVEVGHRLLEPMLQLDRRKLEDGKGTPTYDPRHRAASVLVGEELYSQVADLMGRDFTIFRSLGQNP  
 RTEPHDSRWLNPEKFKVFWIPESENPDDDKIYFFRESAVEAAPAMGRMSVSRVQICRNDLGGQRSLV  
 NKWTTFLKARLVCSVPGVEGDTHFDQLQDVFLSSSRDRQTPLL YAVFSTSSGVFQGSAVCVSMNDV  
 RRAFLGPF AHKEGPTHQWVS YQGRVPYPRPGMCP SKTFGTFSSTKDFPDDVIQFARNHPLMYNPVLP  
 MGGRPLFLQV GAGY T FTQIAADRVAADGHYDVLFIGTDVGTVLKVISVPKGSRPNSEGLLLEELQV  
 FEDSAAITSMQISSKRQQLYIASRSVAQIALHRCTALGRACAECLARDPYCAWDGSACTRFQPTAK  
 RFRQDIRNGDPSTLCSGDSSHSVLLEKKVLGVEGSAFLLECEPRSLQAHVQWTFQGAGEAAHTQV  
 LAEERVERTARGLLRGLRRQDSGVYLCVAVEQGF SQPLRRLVLHVL SAAQAERLARAEAAA  
 APPGPKLWYRDFLQLVEPGGGGANSRLMCRPQPGHHSVAADSRRKGRNRRMHVSELRAERGPR  
 SAAHW

TRTRPLEQKLI SEEDLAANDILDYKDDDDKV

**Restriction Sites:** SgfI-MluI

**Cloning Scheme:**

Cloning sites used for ORF Shuttling:



\* The last codon before the Stop codon of the ORF

**ACCN:** NM\_001291538

**ORF Size:** 2247 bp

**OTI Disclaimer:** The molecular sequence of this clone aligns with the gene accession number as a point of reference only. However, individual transcript sequences of the same gene can differ through naturally occurring variations (e.g. polymorphisms), each with its own valid existence. This clone is substantially in agreement with the reference, but a complete review of all prevailing variants is recommended prior to use. [More info](#)

**OTI Annotation:** This clone was engineered to express the complete ORF with an expression tag. Expression varies depending on the nature of the gene.

**Components:** The ORF clone is ion-exchange column purified and shipped in a 2D barcoded Matrix tube containing 10ug of transfection-ready, dried plasmid DNA (reconstitute with 100 ul of water).

