

## Product datasheet for **MR231044**

### **Dtna (NM\_001285807) Mouse Tagged ORF Clone**

#### **Product data:**

Product Type:	Expression Plasmids
Product Name:	Dtna (NM_001285807) Mouse Tagged ORF Clone
Tag:	Myc-DDK
Symbol:	Dtna
Synonyms:	2210407P21Rik; a-DB-1; adbn; Dtn; DTN-A; Gm19389
Vector:	pCMV6-Entry (PS100001)
E. coli Selection:	Kanamycin (25 ug/mL)
Cell Selection:	Neomycin



[View online »](#)

ORF Nucleotide  
Sequence:

>MR231044 representing NM\_001285807  
 Red=Cloning site Blue=ORF Green=Tags(s)

TTTTGTAATACGACTCACTATAGGGCGGCCGGAATTCGTCGACTGGATCCGGTACCGAGGAGATCTGCC  
 GCCGCGATCGCC

ATGATTGAAGATAGTGGAAAAGAGGAAACACCATGGCAGAAAGAAGACAGCTGTTTGCAGAGATGAGGG  
 CTAAGATCTGGATCGCATCCGACTCTCCACCTACAGAACAGCATGCAAGCTGAGATTTGTGCAGAAGAA  
 ATGCAATTTGCACCTGGTGGACATTTGGAACGTATTGAAGCATTGCGCGAAAACGCTTTGAATAACCTG  
 GACCCAAACATAGAACTCAACGTGGCCCGCTGGAGGCGGTGCTCTCCACTATTTTTTACCAGCTCAACA  
 AGAGGATGCCAACCACTACCAAATCCACGTGGAGCAGTCCATCAGTCTCCTGCTGAACCTCCTGCTCGC  
 AGCCTTTGACCCGGAAGGCCATGGAAAAATCTCAGTATTTGCTGTCAAAATGGCTTTGGCTACATTGTGT  
 GGAGGAAAGATCATGGACAAGTTAAGATATATTTTCTCAATGATCTCTGACTCCAGTGGAGTGATGGTAT  
 ATGGAAGATATGACCAATTCCTTCGGGAAGTTCTCAAACACCCACAGCAGTTTTTGAAGGTCCTTCATT  
 TGTTTACACAGAACAGTCAGCCAGATCCTGTTTCTCCCAACAGAAAAAGGTCACCTTAAATGGCTTCTTG  
 GACACGCTCATGTGACACCCCTCCACAGTGCCTGGTATGGCTGCCTCTTCTGCACCGACTGGCAAATG  
 TAGAAAATGTCTTCCATCCAGTTGAGTGTCTCTACTGTCACAGTGAGAGCATGATGGGATTTTCGATACCG  
 ATGTCAACAGTGTCACACTACCAGCTTGGCCAGGACTGCTTCTGGAGGGGCCATGCAGGAGGTTTCAT  
 AGCAACCAGCACCAAATGAAGGAGTACGTCTGGAAATCACCTGTAAAGAGCTAACGAATGCATTAA  
 GCAAGTCCCTGAGCTGTGCTTCAAGCCGTGAACCTTTCACCCCATGTTCCAGACCAGCCTGAAAAGCC  
 ACTCAACTTGGCTCACATCGTGCCTCCGAGACCTGTAAACCAGCATGAACGACACTCTTTTCCACTCT  
 GTTCCCTCCTCAGGAAGTCTTTTCCATCACCAGGAGCTCTCCTCCCAAGGACAGTGAAGTAGAACAGAA  
 AAATGCTGGCTAGGGCTGCTCCCGCTTCTGAAGGGCAGAGGGATACAGTACAGCCTGAATGTGCCAGA  
 CAGGCTAGCTGATGAACATGTTCTCATTGGGTTGTATGTCAACATGCTCCGGAACAACCCACCATGTATG  
 CTTGAGAGTTCAAACCGCTTGTGAAGAACACAGGCTGATCGCCAGGTACGCCGACGACTGGCAGCAG  
 AATCCTCCTCATCACAGCCACACAGCAGAGGAGTGCCCTGACATCTCCTTACCATCGATGCAAAATA  
 ACAGCAAAGGCAGCTGATTGCAGAGCTAGAGAACAAGAACAGAGAAATCTTACAAGAGATTCAGAGACTT  
 CGGGTAGAACATGAGCAAGCTTCCAGCCACGCCAGAGAAAGCTCAGCAGAACCCAACTTGTGGCAG  
 AACTCCGGCTCCTCAGACAGCGAAAGGATGAGCTAGAACAGAGAATGTCTGCTCTCCAGGAGAGCCGGAG  
 AGAGCTGATGGTCCAGTTGGAAGGTCTCATGAAGCTCCTGAAGGAAGAAGAACTGAAGCAGGGAACCCAG  
 GGGGAAGCTCCACAGCTCTTCCCCAGCCACACCATCAGCAGGCCGATCCCCATGCCATCCGTTTCAG  
 CATCTGCCTGTCCACACCAACGCACACCCCGCAGGACTCCCTCACTGGGGTAGGCGGAGATGTGCAAGA  
 GCGTTTTGCACAAAGTTCGAGAAGGAATCTAAGGAGTGACCTGCTGGTGGCTGCAGACTCCATCACC  
 ACCATGTCCTCTCTGGTGAAGGAGCTGAATTCAGAGGTGGCGAGTGAAACAGAAAGTACTGTGGATTCCG  
 AGTTCTCGAGACCTCAGTTTGGAGATCTGGCTCCATCACCAGCTCTGAGAAGGCTTTTCTAGCCCAAAT  
 CCACTCCCGAAACCTGGGTACATTACGGTGGAGCTGCAAGTACCACGCATGGTACATGGTCCCGGAA  
 GATGGGGATCCTTACACGCAACCCGAGGATGGCAATTATGAGAACGAGTCTGTGCGGCAGCTGGAGAATG  
 AGCTGCAGCTGGAGGAGTACCTGAAGCAGAAGCTGCAGGACGAGGCTACCAGGTCAGCTTGAAGGT

ACGCGTACGCGGCCGCTCGAGCAGAAACTCATCTCAGAAGAGGATCTGGCAGCAAATGATATCCTGGATT  
 ACAAGGATGACGACGAT AAGGTTTAA

Protein Sequence: >MR231044 representing NM\_001285807  
 Red=Cloning site Green=Tags(s)

MIEDSGKRGNTMAERRQLFAEMRAQDLDRIRLSTYRTACKLRFVQKKNLHLVDIWNVIEALRENALNNL  
 DPNIELNVARLEAVLSTIFYQLNKRMPPTHQIHVEQSI SLLNFLLAADFPEGHGKISVFAVKMALATLC  
 GGKIMDKLRYIFSMISDSSGVMVYGRYDQFLREVLKLP TAVFEGPSFGYTEQSARSCFSQQKKVTLNGFL  
 DTLMSDPPPQCLVWLPLLHRLANVENVFHPVECSYCHSESMGMFRYRCQQCHNYQLCQDCFWRGHAGGSH  
 SNQHQMKEYTSWKSPAKKLTNALSKSLSCASSREPLHPMFPDQPEKPLNLAHIVPPRPVTSMNDFLSHS  
 VPSSGSPFITRSSPKDSEVEQNKMLARAAPFLKGRGIQYSLNVADRLADEHVLIGLYVNMLRNNPPCM  
 LESSNRLDEEHLIARYAARLAAESSSSQPTQQRSA PDISFTIDANKQQRQLIAELENKNREILQEIQRL  
 RVEHEQASQPTPEKAQQNPTLLAELRLLRQRKDELEQRMSALQESRRELMVQLEGLMKLLKEELKQGTQ  
 GASSPRSSPHTISRPIPMPIRSASACPTPTHTPQDSL TGVGVDVQEAFAQSSRRNLRSDLLVAADSI TN  
 TMSLVKELNSEVASETESTVDSEFSRPQFEDLAPSPTSEKAF LAQIHSRKPgyIHGGAASSTHGMVPE  
 DGPYTPQPEDGNYENESVRQLENELQLEEY LKQKLQDEAYQVSLQG

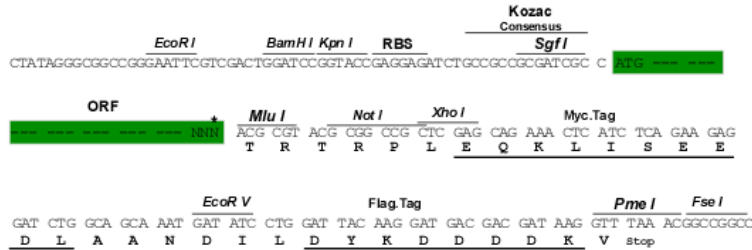
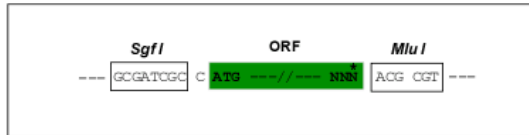
TRTRPLEQKLI SEEDLAANDILDYKDDDDKV

Restriction Sites:

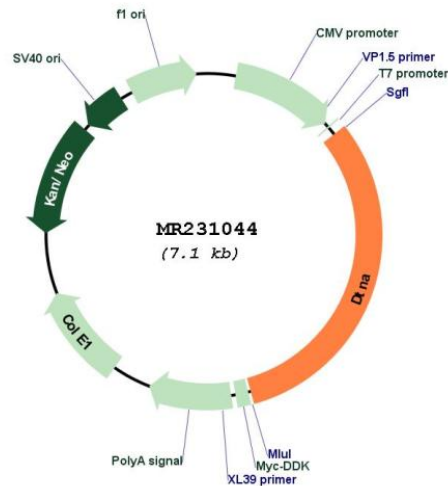
Sgfl-MluI

Cloning Scheme:

Cloning sites used for ORF Shuttling:



\* The last codon before the Stop codon of the ORF

**Plasmid Map:**


**ACCN:** NM\_001285807

**ORF Size:** 2238 bp

**OTI Disclaimer:** The molecular sequence of this clone aligns with the gene accession number as a point of reference only. However, individual transcript sequences of the same gene can differ through naturally occurring variations (e.g. polymorphisms), each with its own valid existence. This clone is substantially in agreement with the reference, but a complete review of all prevailing variants is recommended prior to use. [More info](#)

**OTI Annotation:** This clone was engineered to express the complete ORF with an expression tag. Expression varies depending on the nature of the gene.

**Components:** The ORF clone is ion-exchange column purified and shipped in a 2D barcoded Matrix tube containing 10ug of transfection-ready, dried plasmid DNA (reconstitute with 100 ul of water).

**Reconstitution Method:**

1. Centrifuge at 5,000xg for 5min.
2. Carefully open the tube and add 100ul of sterile water to dissolve the DNA.
3. Close the tube and incubate for 10 minutes at room temperature.
4. Briefly vortex the tube and then do a quick spin (less than 5000xg) to concentrate the liquid at the bottom.
5. Store the suspended plasmid at -20°C. The DNA is stable for at least one year from date of shipping when stored at -20°C.

**RefSeq:** [NM\\_001285807.1](#), [NP\\_001272736.1](#)

**RefSeq Size:** 3954 bp

**RefSeq ORF:** 2241 bp

**Locus ID:** 13527

UniProt ID: [Q9D2N4](#)  
Cytogenetics: 18 12.08 cM  
MW: 84.5 kDa  
Gene Summary: Involved in synapse maturation and required for normal muscle function.[UniProtKB/Swiss-Prot Function]