

Product datasheet for **MR231035**

Palb2 (NM_001289844) Mouse Tagged ORF Clone

Product data:

Product Type:	Expression Plasmids
Product Name:	Palb2 (NM_001289844) Mouse Tagged ORF Clone
Tag:	Myc-DDK
Symbol:	Palb2
Synonyms:	BC066140
Mammalian Cell Selection:	Neomycin
Vector:	pCMV6-Entry (PS100001)
E. coli Selection:	Kanamycin (25 ug/mL)



[View online »](#)

ORF Nucleotide
Sequence:

>MR231035 representing NM_001289844
 Red=Cloning site Blue=ORF Green=Tags(s)

TTTTGTAATACGACTCACTATAGGGCGGCCGGAATTCGTCGACTGGATCCGGTACCGAGGAGATCTGCC
 GCC**CGGATCGCC**

ATGGAAGAGCTTCCGGGAAGCCCTCAGCTATGCGGAGAAGAAAAGTTGAAGGAAAAGCTAGCATT
 TGA AAAAGGAATACAGCAGGACACTTGCTCGACTTCAGCGTGCCAAAAGAGCTGAGAAGGCTAAGA
 AACT TAAGAAAAGCCATAGAAGATGGTGTGCCCCAGCCAGAAGCTTCTCACAGCTAAGCCACTCTGA
 ATCTATA AATAAAGGCTTTCCTTGTGACACATTGCAAAGCAACCCTCGGATGAGGAGACTGGAGAAA
 CATCTCTC AGATACTTGATGTTGAACCTCAATCCTTTAACTGTAACAAGGCAAGAAGTATTACATA
 CCAAGAGC AGGTGACATTCAAGGACAACCTTTGCATAGCACCAGCAGCCCTGATGGCAAGAAAGAGC
 AGAACACGCTT CCGGGGACAACAAAGACGCCGTGGGAGAAGTCATCTGTTTACAGGAGAAGGAAGATT
 ATTTTGACACTA ATCTCTGGCGCTCCTTGACTTTGAGTTACCTGATGAAGACTTTGGGCTTCTTAA
 ACTTGAAAAATTGAA GTCTGCTCGGAAAACTGATTGAGTCTCCTGACTCAAAAACTGTGGTGA
 GAGGCTTCTAGAGAAGGA AACCATGCTGCTCGGAGAACTGCAAAGAGATTCGGAGACGGAGGGCTT
 GGAAGAGGAGCTCACTGTTCCACCAGGAGAAGCGTACCGTCCAGGGCCAAACCCTGAGAAGGCAGC
 CAGGGAGCAAGGACCTTTCTTCATC CATAGTGCTTTTCACTCCTGCAGACACTGCTGCGCCTAAC
 GCAGTGGCAGGCCTCCTCCCTCCCTGTGC TCACCTGCTTTCCCATCTTAGGCATGACTCCAGCT
 CTTGGCTCCCAAGCAGCCGGTGAGACTCTATCTA CTGAAGCTGCACAGCCTTGCTCTACATCCCA
 ACCTCCTCTCTTGGGAGACACAAACAGTCTTGTCAATAA CAGTAAACAGTGAACAGTTCAGCCT
 GCTCACCAAAACCGGACACCAACCTGCAAGCGTCAGGTAGGCAA GGACAACCTGCCTGTGACAGT
 GACTCTGGCCCCAAGCAACACCTCTACCTGTTGAGTCATTCACTTTCA GAGAAAAATCAGCTTT
 GTGAAAATGCATGCCTCGAGTTACATGAACATTCCTGAAACAGACTGAACTGC AGATCGCCCTG
 CTGTGACAATCTAAACCCAGGAAACCTACAGTTGGTTTCAGAGTTAAAGAATCCTTCC AGTTCC
 TCTGTGGATGTGAGCGCCATGTGGTGGGAAAAGAGCTGGTGCTAAGGAGCCATGTATCGTAA
 CTGCTTGTGAAGATGTAGTTTCTTTGGAAACCTTGAATTCTCTGCAGTGGGAGAAAGTTCATACCT
 GCACTTACAGAGGTTCCAGTATTACAAATAGTTCCAGTGCCTGATGTTTACAATCTTATATGTGTA
 GCT TTGGGAAGTTTGGAAATCAGAGAAATCAGGGCGTTGCTGTGCTCTTCTGGTATGACAGTGA
 AAAAGCAAG TCCTCCTGAAATCTGGAGATATAAAAGCTATGCTTGGCCTGACAAAGCGGAGGCT
 AGTTAGTAGCACTGG GACCTTTTGAATCAACAAATACAAATCATGACATTTGCTGACGACGGAAGC
 AGCAAGATGAACAGCTT TTGATGCCTCCTGATGAGACTGTACTGACTTTTGTGAAGTCCAAGGGAC
 GCAGGAAGCTCTGCTTGGTA CTACCACTGTGAACAGCATTGTGATCTGGAATTTAAAAACCGGCC
 AGCTCCTGAAGAAGATGCACATTGATGACTCCTACCAGGCTTCGGTCTGTACGGAGCCATTCTGAG
 AAGGGGCTCCTGTTTGTGTTGTGAGT CAACCTTGTGCCAAAGAGAGCCAGGCCCTTGAAGCCCT
 GTGTTCCAGCTGCTGGTGATTAACCTAAGA CGGCCAGAGTGTGGGTGTTCTGCTGTGTTCCCTT
 CCTCAGGGGCAGGCTGGAAGGTTCTGGAAGGGGA TGTGAAAGATCATGTGCGCAGCAGCAGTCT
 GACTTCTGGGACAATTGCCATTTGGGATTTGCTTCTGGT CACTGCACGGCTCTCTCCACCTGTCT
 CTGACCAGAGTTGGTCTTTGGTAAATGGTCGGGTACAGATT CTCACTTGCTAGCTGGACAAAAGG
 ATGGAATATATTTATATACCGATACTTT

ACGCGTACGCGGCCGCTCGAGCAGAACTCATCTCAGAAGAGGATCTGGCAGCAAATGATATCCTGGATT
 ACAAGGATGACGACGATAAGGTTTAA

Protein Sequence: >MR231035 representing NM_001289844
Red=Cloning site Green=Tags(s)

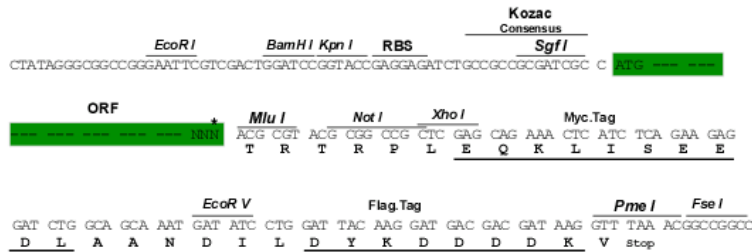
```
MEELSGKPLSYAEKEKLKEKLAFLKKEYSRTLARLQRAKRAEKAKNSKKAIEDGVPQPEASSQLSHSESI
NKGFPCTLQSNHLDEETGENISQILDVEPQSFNCKQGKEVLHTPRAGDIQGQLLHSTSSPDGKKEQNTL
PGTTKTPWEKSSVSQEKEDYFDTNLALLDFELPDEDFGLLKLEKLKSCSEKLIESPDSKNCGERLPREG
NHAALEELQRDSETEGLEEELTVPPGEAYRPGPTLRRQPGSKDLSSSIVLFTPADTAAPNDSGRPPPSLC
SPAFPILGMPALGSQAAGETLSTEAAQPCSTSQPPLLGDNTSLVNNKQCNSACSPKPDNLQASGRQ
GQPACDSDSGPQATPLPVE SFTFRENQLCGNACLELHEHSTEQTETADRPACDNLNPGNLQVSELKNPS
SSCSVDVSAMWWERAGAKEPCIVTACEDVVSLLWKPLNSLQWEKVHTWHFTEVPVLQIVPVPDYNLICVA
LGSLEIREIRALLCSSGDDSEKQVLLKSGDIKAMLGLTKRRLVSSTGTFCNQIQIMTFADDGSSKDEQL
LMPPDET VLTFAEVQGTQEALLGTTT VNSIVIWNLKTGQLLKKMHIDDSYQASVCHGAYSEKGLLFVVVS
QPCAKESQALGSPVFQLLVINPKTAQSVGVLLCSLPQQQAGRFLGKVDKDHVAAAVLTSGTIAIWDLLL
HCTALLPPVSDQSWSLVKWSGTDSHLLAGQKDGNI F IYRYF
```

TRTRPLEQKLISEEDLAANDILDYKDDDDKV

Restriction Sites: SgfI-MluI

Cloning Scheme:

Cloning sites used for ORF Shuttling:



* The last codon before the Stop codon of the ORF

ACCN: NM_001289844

ORF Size: 2223 bp

OTI Disclaimer: The molecular sequence of this clone aligns with the gene accession number as a point of reference only. However, individual transcript sequences of the same gene can differ through naturally occurring variations (e.g. polymorphisms), each with its own valid existence. This clone is substantially in agreement with the reference, but a complete review of all prevailing variants is recommended prior to use. [More info](#)

OTI Annotation: This clone was engineered to express the complete ORF with an expression tag. Expression varies depending on the nature of the gene.

Components: The ORF clone is ion-exchange column purified and shipped in a 2D barcoded Matrix tube containing 10ug of transfection-ready, dried plasmid DNA (reconstitute with 100 ul of water).

Reconstitution Method:

1. Centrifuge at 5,000xg for 5min.
2. Carefully open the tube and add 100ul of sterile water to dissolve the DNA.
3. Close the tube and incubate for 10 minutes at room temperature.
4. Briefly vortex the tube and then do a quick spin (less than 5000xg) to concentrate the liquid at the bottom.
5. Store the suspended plasmid at -20°C. The DNA is stable for at least one year from date of shipping when stored at -20°C.

RefSeq: [NM_001289844.1](#), [NP_001276773.1](#)

RefSeq Size: 2661 bp

RefSeq ORF: 2226 bp

Locus ID: 233826

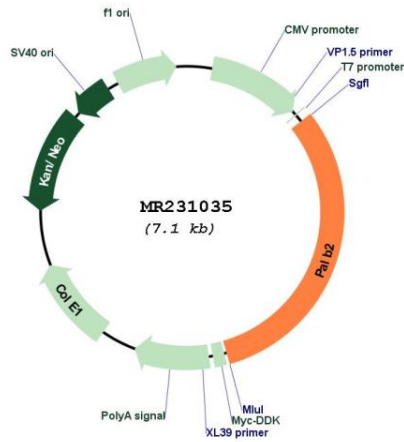
UniProt ID: [Q3U0P1](#)

Cytogenetics: 7 F2

MW: 80.9 kDa

Gene Summary: Plays a critical role in homologous recombination repair (HRR) through its ability to recruit BRCA2 and RAD51 to DNA breaks. Strongly stimulates the DNA strand-invasion activity of RAD51, stabilizes the nucleoprotein filament against a disruptive BRC3-BRC4 polypeptide and helps RAD51 to overcome the suppressive effect of replication protein A (RPA). Functionally cooperates with RAD51AP1 in promoting of D-loop formation by RAD51. Serves as the molecular scaffold in the formation of the BRCA1-PALB2-BRCA2 complex which is essential for homologous recombination. Via its WD repeats is proposed to scaffold a HR complex containing RAD51C and BRCA2 which is thought to play a role in HR-mediated DNA repair. Essential partner of BRCA2 that promotes the localization and stability of BRCA2. Also enables its recombinational repair and checkpoint functions of BRCA2. May act by promoting stable association of BRCA2 with nuclear structures, allowing BRCA2 to escape the effects of proteasome-mediated degradation. Binds DNA with high affinity for D loop, which comprises single-stranded, double-stranded and branched DNA structures. May play a role in the extension step after strand invasion at replication-dependent DNA double-strand breaks; together with BRCA2 is involved in both POLH localization at collapsed replication forks and DNA polymerization activity (By similarity).[UniProtKB/Swiss-Prot Function]

Product images:



Circular map for MR231035