

Product datasheet for **MR230828**

Mid1 (NM_001290504) Mouse Tagged ORF Clone

Product data:

Product Type:	Expression Plasmids
Product Name:	Mid1 (NM_001290504) Mouse Tagged ORF Clone
Tag:	Myc-DDK
Symbol:	Mid1
Synonyms:	61B3-R; DXHXS1141; Fxy; Trim18
Mammalian Cell Selection:	Neomycin
Vector:	pCMV6-Entry (PS100001)
E. coli Selection:	Kanamycin (25 ug/mL)



[View online »](#)

ORF Nucleotide
Sequence:

>MR230828 representing NM_001290504
 Red=Cloning site Blue=ORF Green=Tags(s)

TTTTGTAATACGACTCACTATAGGGCGGCCGGAATTCGTCGACTGGATCCGGTACCGAGGAGATCTGCC
 GCC**CGATCGCC**

ATGGAACACTGGAGTCGGAGCTGACCTGTCTATTTGTCTGGAGCTTTTGGAGACCTCTCTGTCTT
 CCTGCGCACATAGCCTCTGCTTCAACTGTGCCACCGAATCCTGGTCTCTCACTGTGCCACCAACGAGCC
 TGTGGAGTCCATCAACGCCTTCCAGTGCCCCACCTGCCGGCATGTCATCACGCTCAGCCAGCGAGGTCTA
 GACGGGCTCAAGCGCAACGTCACCCTCCAAAACATCATTGACAGATTTAGAAAAGCATCTGTGAGCGGGC
 CCAACTCTCCAGTGAGACCCGAGGGAACGGGCTTTGACGCCAACACCATGTCCTCTGCCGAGAAGGT
 TCTCTGCCAGTTCTGTGACCAGGATCCTGCCAGGATGCTGTGAAGACTTGCCTTACTTGTGAAGTGTCC
 TACTGTGATGAGTGCCTGAAAGCCACTCATCCGAACAAGAAGCCCTTTACAGGCCATCGTCTGATTGAGC
 CAATCCCGGACTCGACATCCGGGGCTGATGTGCTGGAGCACGAGGATGAGAAGTGAATATGTACTG
 TGTGACCGATGACCAGTTAATCTGTGCCTTGTGTAAGTGGTTGGCGGCACCGCATCATCAGGTGGCA
 GCTTTGAGTGAGCGCTATGACAAATTGAAGCAAACTTGAGAGTAATCTCACCATCTTATTAAGAGAA
 ACACAGAACTGGAGACTCTTTGGCTAAACTCATCCAACTTGTCAACATGTTGAAGTCAATGCATCCCG
 TCAAGAAGCCAACTGACAGAAGAATGTGATCTTCTCATTGAAATCATTACAGCAACGAAGACAAATTATT
 GGAACAAAGATTAAGAAGGCAAGGTGATCAGGCTCCGCAAGTTAGCTCAGCAGATTGCAAACTGTAAC
 AGTGCCTTGAGAGGTCTGCATCGCTCATCTCGAAGCGGAGCACTCGCTGAAGGAAAATGACCACGCCCG
 TTTTCTACAGACAGCAAGAATATCACTGAGAGAGTCTCCATGGCAACTGCATCTCCAGGTCTAATT
 CCCGAAATCAACCTCAATGACACGTTTGACACTTTTGCCTTGGATTTTCCCGGGAAGAAGAACTGCTAG
 AATGCTGGATTACCTAACAGCTCCCAACCTCCCGGATTAGAGAAGAGCTCTGCACCGTTCCTACGA
 CACCATCACCGTCCACTGGACCTCAGAGGACGAGTTCAGCGTGGTCTCCTACGAGCTCCAGTACACCATA
 TTCACCGACAAGCCAATGTTGTCACTGTGTAAGTGGCGGACAGCTGGATGATCGTGCCCAACATCA
 AGCAGAACCCTACACCGTGCACGGCTGCAAAGTGGCACCAAGTATATCTTACCGGTGAAGGCCATCAA
 CCAGGGCGGCGAGCCGTAGCAGCGAGCCCGAAAGCTGAAGACCAACAGTACGCGTTTAGACTGGATCCC
 AAATCGGCTCATCGAAGCTGAAGGTGTCCACGACAACCTGACTGTGAGCGCGACGAGTCTGCTCTA
 AGAAGAGTACGCGCCGAGCGCTTCGCTGGTACGGGAGCTACGGAGTGGCTGGCAACGTGTTTCATCGA
 CAGCGGCCGTCACTACTGGGAAGTGGTACCAGCGGAAGCACATGGTACGCCATCGGCTGGCGTACAGA
 TCGGCGCCGAAACACGAGTGGATCGGGAAGAACCGGCGTCTGGGCCCTCTGCCCTGCCACAACCACT
 GGGCGGTGCGACACGACGCAAGGAGACCCCATCGCGCCGCCCTCACCTCAGGCGCGTGGCGTCTCT
 GCTGGACTACGACAACGGCTCCATCGCCTTCTACGACGCTCTGAGCTCCGTCCACCTCCACACCTCCAC
 GCGGCGCTCGCGCAGCCGTGTGCCACCTTACCGTGTGGAACAAGTGTCTGACCATCGTACGGGTC
 TGCCATCCCGGACCATCTGGACTGTACGGAGCAGCGACCT

ACGCGTACGCGGCCGCTCGAGCAGAACTCATCTCAGAAGAGGATCTGGCAGCAATGATATCCTGGATT
 ACAAGGATGACGACGATAAGGTTTAA

Protein Sequence: >MR230828 representing NM_001290504
 Red=Cloning site Green=Tags(s)

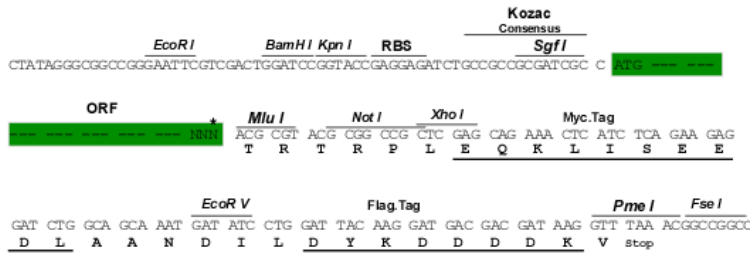
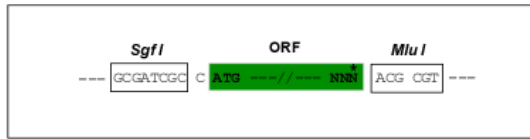
```
METLESELTCPICLELFEDPLLLPCAHSLCFNCAHRILVSHCATNEPVESINAFQCPTCRHVITLSQRGL
DGLKRNVTLQNIIDRFQKASVSGPNPSETRRERAFDANTMSSAEKVLCOFCDQDPAQDAVKTCVTEVS
YCDECLKATHPNKPPFTGHRLIEPIPDSHIRGLMCLHEHEDEKVNMYCVTDDQLICALCKLVGRHRDHQVA
ALSERYDKLKQNLLENLNLIKRNTELETLLAKLIQTCQHVEVNASRQEAKLTEECDLLIEIIQRRQII
GTKIKEGKVIURLRKLAAQIANKQCLERSASLISQAEHSLKENDHARFLQTAKNITERVSMATASSQVLI
PEINLNDTFDFALDFSREKLLLECLDYLTAPNPPAIREELCTASYDTITVHWTSEDEF SVVSYELQYTI
FTGQANVVSLCNSADSWMI VPNIKQNH YTVHGLQSGTKYIFTVKA INQAGRSRSEPGK LKNTSQPFRLDP
KSAHRKLVSHDNL TVERDESSK KSHAPERFAGQGSYG VAGNVF IDSGRHYWEVVTSGSTWYA IGLAYR
SAPKHEWIGKNAASWALCRCHNHAVRHDGKETPIAPAPHLRRVGLLDYDNGSIAFYDALSSVHLHTHF
AALAQPVCPTFTVWNKCLTIVTGLPIPDLDCTEQRP
```

TRTRPLEQKLI SEEDLAANDILDYKDDDDKV

Restriction Sites:
Cloning Scheme:

SgfI-MluI

Cloning sites used for ORF Shuttling:



* The last codon before the Stop codon of the ORF

ACCN: NM_001290504

ORF Size: 2001 bp

OTI Disclaimer: The molecular sequence of this clone aligns with the gene accession number as a point of reference only. However, individual transcript sequences of the same gene can differ through naturally occurring variations (e.g. polymorphisms), each with its own valid existence. This clone is substantially in agreement with the reference, but a complete review of all prevailing variants is recommended prior to use. [More info](#)

OTI Annotation: This clone was engineered to express the complete ORF with an expression tag. Expression varies depending on the nature of the gene.

Components: The ORF clone is ion-exchange column purified and shipped in a 2D barcoded Matrix tube containing 10ug of transfection-ready, dried plasmid DNA (reconstitute with 100 ul of water).

Reconstitution Method:

1. Centrifuge at 5,000xg for 5min.
2. Carefully open the tube and add 100ul of sterile water to dissolve the DNA.
3. Close the tube and incubate for 10 minutes at room temperature.
4. Briefly vortex the tube and then do a quick spin (less than 5000xg) to concentrate the liquid at the bottom.
5. Store the suspended plasmid at -20°C. The DNA is stable for at least one year from date of shipping when stored at -20°C.

RefSeq: [NM_001290504.1](#), [NP_001277433.1](#)

RefSeq Size: 3714 bp

RefSeq ORF: 2004 bp

Locus ID: 17318

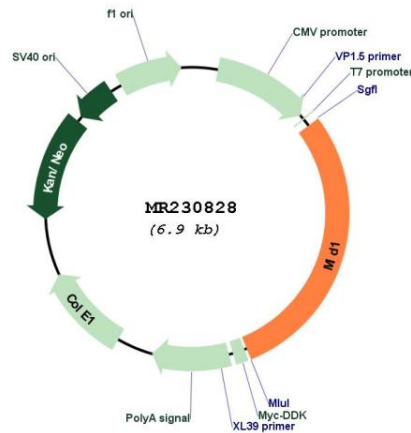
UniProt ID: [O70583](#)

Cytogenetics: X 79.19 cM

MW: 75.4 kDa

Gene Summary: Has E3 ubiquitin ligase activity towards IGBP1, promoting its monoubiquitination, which results in deprotection of the catalytic subunit of protein phosphatase PP2A, and its subsequent degradation by polyubiquitination.[UniProtKB/Swiss-Prot Function]

Product images:



Circular map for MR230828