

Product datasheet for **MR230748**

Hdx (NM_001290459) Mouse Tagged ORF Clone

Product data:

Product Type:	Expression Plasmids
Product Name:	Hdx (NM_001290459) Mouse Tagged ORF Clone
Tag:	Myc-DDK
Symbol:	Hdx
Synonyms:	D030011N01Rik; Gm380
Vector:	pCMV6-Entry (PS100001)
E. coli Selection:	Kanamycin (25 ug/mL)
Cell Selection:	Neomycin



[View online »](#)

**ORF Nucleotide
Sequence:**

>MR230748 representing NM_001290459
 Red=Cloning site Blue=ORF Green=Tags(s)

TTTTGTAATACGACTCACTATAGGGCGGCCGGAATTCGTCGACTGGATCCGGTACCGAGGAGATCTGCC
 GCC**CGCATCGCC**

ATGAGTAGTAAAAGCTGTGAATCAGGAGCAGCAGGAAGTGTGTCTGGTACCTCATTGGCAGCGCCAGACA
 TTACAGTCAGAAATGTGGTTAATATTGCCCGCCCTTCAAGCCAGCAATCTTCTTGACTTCTGCCAATAA
 TGATGTCAATTGTAAGTGTATATACAGTCCAGTAAAGTCACTCAAGTAAGCAAGGCACTACAAAGCATAACA
 AATACACAAAATTACAGAAGCACATAAAATTCCTATTTCAGAAGGCAGCCAATAAAAATGACTGAATTAC
 AATTGCACATTCTGTTCAAAGACAAGTAGCGCACTGTAAGAATGCTTCTGTGCTCCTAGGGGAAAAAGAC
 AATTATTTTGTCAAGACAGACAAGTGTACTAAATGCTGGAAGTCAAGTGTACAATCACACAAAGAAAAGC
 TATGGAAGTTCCTCGGTGCAAGTTCAGAAATGACAGTACCTCAAAGCCATCTGTGTGCCAGCGACCTT
 GCAAAATTGAACCAAGTTGGGATTCAAAGGTCATATAAACCTGAACATGCAGGTCTGGCATCACATAACTT
 ATGTGGGCAAAAGCCAACCATAGAGACCTTGTGTAGAACACAAAAGTGGAAATTCGTGAAGTGT
 TCATTGGCAGTCAGTGATTACCCCTCAGAGAATTCGGGAGGAAATAGCACACAGAAGCCGCGCTCAGCAG
 AAGGAAGTGTGTTGTCATTGCAATGGAGACTGGAGACGCAGAGGATGAATATGCCAGAGAAGAAGAACT
 GGCATCAATGGGAGCACAAATAACAAGCTACTCAAGGTTTTATGAAAGTGGCAATTCCTTCGAGCTGAG
 AACCAAGTACAAATTTGCCTGGACCAGGAAGAAACCTGCCAAATTCACAAATGGTGAATATTAGAGATT
 TGTACAGCAATGTACTGTATCAGACTAGAGACTACCATTTGACACCACGGACCTCATTGCATACAGCATC
 TAGTACTATGTACAGTAATACTAATCCATCACGGAGTAATTTTTCTCCACATTTTGTATCATCAAACCA
 CTGAGGTTATCACAAAACCAAAACAATTACCAGATTTTCAGGAAACCTTTCTGTGCCTTGGATTACAGGGT
 GTTCTAGGAAAAGAGCACTACAGGACCGCACTCAATTCAGTGACCGAGACTTGGTACTCTTAAGAAGTA
 CTGGGACAATGGTATGACCAGCCTGGGCTCTGTATGTAGAGAGAAGATTGAAGCTGTTGCAATTGAATTA
 AATGTCGACTGTGAAATAGTTCGGACTTGGATTGGGAATCGAAGAAGAAAATACCGTTTAAATGGGAATTG
 AAGTTCACCTCCAAGAGGAGGCCCTGCTGATTTCTCTGAGCAGCCTGAGTCTGTTTCTTTGTCTGCACT
 CACACCAGGAGAGGAAGCTGGGCTGAAGTAGGAGAGGATAATGACAGAAATGATGAAGTGTCCATCTGT
 TTGTCCGAAGCAAGCTCTCAAGAGGAGTCCAATGAACTTATCCCAAATGAGACCAGGGCACATAAGGATG
 AAGAGCACCAGGCAGTATCTGCAGATAATGTGAAAATAGAAATTCGATGATGAAGAAAGTGCATGAT
 AAGCAATTCAGGTAGAACAAGAAAATCTCTCCTGGATTACAAGAATGAAGAAGTCAAGTTTATTGAA
 AATGAGCTAGAGATTCAAAAGCAAAAATACTTTAAGCTCCAGTCTTTTGTAGAAACCTGATTCTCGCTA
 TGAAAGCTGATGATAAAGACCAGCAGCAGGCACTGCTGTGAGATTTACCTCCAGAATTAGAAGAGATGGA
 TTGCAGTCATGCCTCGCCGGATCCTGATGATACCTCACTCAGTGTGTCTTCTTTATCAGAGAAAAATGCC
 TCAGACAGCTTG

ACGCGTACGCGGCCGCTCGAGCAGAACTCATCTCAGAAGAGGATCTGGCAGCAATGATATCCTGGATT
 ACAAGGATGACGACGATAAGGTTAA

Protein Sequence: >MR230748 representing NM_001290459
 Red=Cloning site Green=Tags(s)

MSSKSCESGAAGTVSGTSLAAPDITVRNVVNIARPSSQQSSWTSANNDVIVTGIYSPVSSSSKQGTTKHT
 NTQITEAHKIPIQKAANKNDELQLHIPVQRQVAHCKNASVLLGEKTIILSRQTSVLNAGNSVYNHTKKS
 YGSSPVQASEMTVPQKPSVCQRPKIEPVGIIQRSYKPEHAGLASHNLCGQKPTIRDPCCRTQNLIREVF
 SLAVSDYPQRILGGNSTQKPASAEGLCLSIAMETGDAEDEYAREEELASMQAITSYSRFYESGNLRAE
 NQSTNLPGPGRNLPNSQMVNIRDLSNVLYQTRDYHLTPRTLHTASSTMYSNTPRSNFSPHFVSSNQ
 LRLSQNQNNYQISGNLSVPWITGCSRKRALQDRTOFSDRDLATLKKYWDNGMTSLGSVCREKIEAVAIEL
 NVDCIEIVRTWIGNRRRYRLMGIEVPPRGGPADFSEQPESGSLSALTPGEEAGPEVGEDNDRNDEVSIC
 LSEASSQEESNELIPNETRAHKDEEHQAVSADNVKIEIIDDEESDMI SNSEVEQENSLLDYKNEEVRFIE
 NELEIQKQYFKLQSFVRNLILAMKADDKQQQALLSDLPPELEEMDCSHASPPDDTSLSVSSLSEKNA
 SDSL

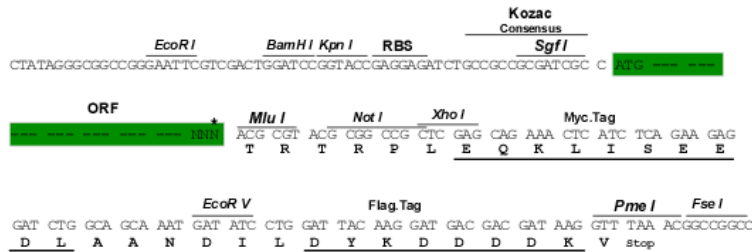
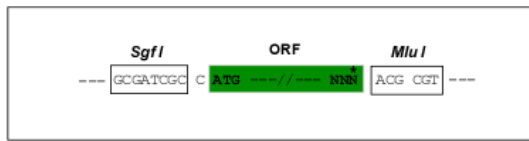
TRTRPLEQKLISEEDLAANDILDYKDDDDKV

Restriction Sites:

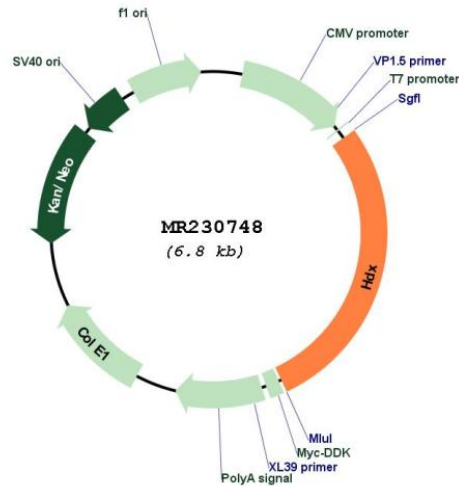
SgfI-MluI

Cloning Scheme:

Cloning sites used for ORF Shuttling:



* The last codon before the Stop codon of the ORF

Plasmid Map:


ACCN: NM_001290459

ORF Size: 1902 bp

OTI Disclaimer: The molecular sequence of this clone aligns with the gene accession number as a point of reference only. However, individual transcript sequences of the same gene can differ through naturally occurring variations (e.g. polymorphisms), each with its own valid existence. This clone is substantially in agreement with the reference, but a complete review of all prevailing variants is recommended prior to use. [More info](#)

OTI Annotation: This clone was engineered to express the complete ORF with an expression tag. Expression varies depending on the nature of the gene.

Components: The ORF clone is ion-exchange column purified and shipped in a 2D barcoded Matrix tube containing 10ug of transfection-ready, dried plasmid DNA (reconstitute with 100 ul of water).

Reconstitution Method:

1. Centrifuge at 5,000xg for 5min.
2. Carefully open the tube and add 100ul of sterile water to dissolve the DNA.
3. Close the tube and incubate for 10 minutes at room temperature.
4. Briefly vortex the tube and then do a quick spin (less than 5000xg) to concentrate the liquid at the bottom.
5. Store the suspended plasmid at -20°C. The DNA is stable for at least one year from date of shipping when stored at -20°C.

RefSeq: [NM_001290459.1](#), [NP_001277388.1](#)

RefSeq Size: 4114 bp
RefSeq ORF: 1905 bp
Locus ID: 245596
UniProt ID: Q14B70
Cytogenetics: X E1
MW: 70.3 kDa