

## Product datasheet for **MR230727**

### Lcp1 (NM\_001247984) Mouse Tagged ORF Clone

#### Product data:

Product Type:	Expression Plasmids
Product Name:	Lcp1 (NM_001247984) Mouse Tagged ORF Clone
Tag:	Myc-DDK
Symbol:	Lcp1
Synonyms:	AW536232; D14Ertd310e; LCP-1; Pls2; pp65
Mammalian Cell Selection:	Neomycin
Vector:	pCMV6-Entry (PS100001)
E. coli Selection:	Kanamycin (25 ug/mL)



[View online »](#)

**ORF Nucleotide Sequence:**

>MR230727 representing NM\_001247984  
 Red=Cloning site Blue=ORF Green=Tags(s)

TTTTGTAATACGACTCACTATAGGGCGGCCGGGAATTCGTGACTGGATCCGGTACCGAGGAGATCTGCC  
 GCC**CGCATCGCC**

ATGGCCAGAGGATCCGTGTCTGACGAAGAAATGATGGAGCTCAGAGAGGCTTTTGCCAAAGTTGATACCG  
 ATGGCAACGGATACATCAGCTGCAATGAGCTAAATGACTTGTTCAAGGCCGCTGCCTGCCTCTGCCTGG  
 GTACCGAGTGAGAGAAATCACAGAAAACCTGATGGCCACAGGTGATCTGGACCAAGATGGAAGATCAGC  
 TTTGATGAGTTTATCAAGGTCTTCCATGGCTTAAAAAGCACCGAGGTTGCCAAAACCTCCGAAAAGCTA  
 TCAACAAGAAGGAAGGGATCTGTGCGATTGGCGGCACCTCTGAGCAGTCCAGCGTTGGTACCCAGCACTC  
 TTA CT CAGAGGAAGAAAAGTATGCCTTTGTCAACTGGATAAACAAAGCCCTGGAGAATGACCCCGACTGC  
 CGGCATGTCATCCCATGAACCCCAACACCGACGATCTTCAATGCTGTAGGCGATGGCATAAGTCTTT  
 GTAAAATGATCAACCTGTCTGTGCCAGACAGATTGACGAGAGAACGATCAACAAGAAAAAGCTCACACC  
 ATTCACCATT CAGGAAAACCTTGAACCTGGCTCTGAACCTGCCTCTGCCATTGGGTGCCAGTGGTTAAT  
 ATAGGGGGCCGAGGACCTGAAGGAGGGCAAGCCTTACCTGGTCTGGGACTTTTGTGGCAAGTCATCAAGA  
 TTGGGTTGTTTGCTGACATTGAACCTCAGCAGAAATGAAGCTCTGATTGCTCTTTGAGAGAGGAGAGAG  
 CCTAGAGGATTTGATGAAGTTGTCTCCTGAAGAACTCCTGCTGCGGTGGGCTAACTACCCTAGAAAAAC  
 GCAGGCTGCACCAAAATCACAACCTT CAGCACCACGATCAAGGACTCCAAAGCTTATTACCACCTGCTCG  
 AGCAAGTGGTCCAAAAGGAGATGAAGAAGGGATCCC GCGGTTGTGATTGACATGTCAGGACTGAGGGA  
 GAAGGATGACATCCAGAGGGCAGAGTGCATGCTGCAACAGGCGGAGAGGCTGGGCTGCCGCGAGTTGTC  
 ACAGCTACTGATGTTGTCCGAGGGAACCCAAAGTTGAACCTGGCCTTATTGCCAACCTCTTCAACAAAT  
 ACCCTGCCTTACACAAACCAGAGAACCAGGACATTGACTGGGGGGCTCTCGAAGGTGAGACGAGGGAAGA  
 GCGGACCTT CAGGAATTGGATGAACTCCCTGGCGTTAACCCGCGGTCATCACTTGTACAGCGACTTA  
 TCGGATGCCTTAGTCATCTTCCAGCTCTATGAGAAGATCAAAGTCCCTGTTGATTGGAACAGAGTAAACA  
 AGCCTCCATACCCAAAGCTGGGGGGCAATATGAAAAAGCTGGAGAAGTGAATTATGCAAGTGGACCTGGG  
 GAAGAATCAAGCTAAATCTCCCTGGTTGGCATCGCAGGACAAGACCTCAATGAAGGAAACCGAACTCTC  
 ACGCTGGCATTGGTTTGGCAGCTCATGAGAAGGTACACACTGAATATCCTGGAAGATATCGGAGGTGGAC  
 AGAAGGTCAATGATGACATTATTGTCAACTGGGTGAATACGACCTGAAGGAGGCACAGAAAAGCTCATC  
 CATTGCTAGCTTCAAGGACCCAAAGATCAGTACCAGCCTCCCGTTCTGGATCTCATTGACGCCATT CAG  
 CCAGTTCCATAAATATGACCTTCTAAAGACAGAAAACCTGGATGATGAAGAGAACTCAACAATGCAA  
 AGTATGCCATCTCTATGGCCAGAAAAATCGGAGCAAGGGTGTACGCCCTCCAGAAAGACCTGGTTGAAGT  
 GAACCCAAAAATGGTCATGACAGTGTTCCTGCCTCATGGGAAAGGGATGAAGAGGGT

**ACGCGT**ACGCGGCCGCTCGAGCAGAAACTCATCTCAGAAGAGGATCTGGCAGCAAATGATATCCTGGATT  
 ACAAGGATGACGACGATAAGGTTTAA

**Protein Sequence:**

>MR230727 representing NM\_001247984  
 Red=Cloning site Green=Tags(s)

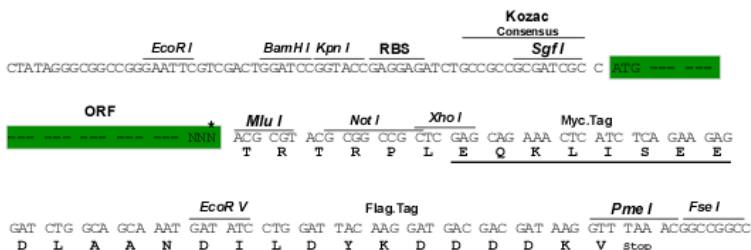
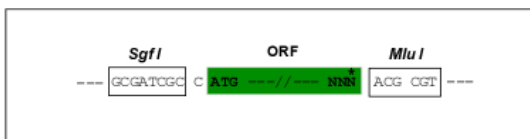
MARGSVSDEEMMELREAFKVDTDGNGYISCNELNDLFKAACLPLPGYRVREITENLMATGDLDDQDGKIS  
 FDEFIKVFHGLKSTEVAKTFRKAINKKEGICAIIGGTSEQSSVGTQHSYSEEEKYAFVNWINKALENDPDC  
 RHVIPMNPNTDDLFNAVGDGIVLCKMINLSVPDTIDERTINKKKLTPFTIQENLNLALNSASAIGCHVVN  
 IGAEDLKEGKPYLVLLWQVIKIGLFADIELSRNEALIALREGESLEDLMLKSPEELLRWANYHLEN  
 AGCTKITNFSTDIKDSKAYYHLLQVAPKGDEEGIPAVVIDMSGLREKDDIQRAECMLQQAERLGCRRQFV  
 TATDVVRGNPKLNLAFLANL FNKYPALHKPENQDIDWGALEGETREERTFRNWMNSLGVNPRVNHLYSDL  
 SDALVIFQLYEKIKVPVDWNRVKNPPYKLGGMKKLENCNYAVDLGKNQAKFSLVGIAGQDLNEGNRTL  
 TLALVWQLMRRYTLNILEDIGGGQKVNDDIIVNWVNTTLKEAQKSSSIASFKDPKISTSLPVLDLIDAIQ  
 PGSINYDLLKTENLDDEEKLNNAKYAIMARKIGARVYALPEDLVEVNPKMVMVTFACL MGKGMKRV

**TR**TRPLEQKLISEEDLAANDILDYKDDDDKV

Restriction Sites: SgfI-MluI

Cloning Scheme:

Cloning sites used for ORF Shutting:



\* The last codon before the Stop codon of the ORF

ACCN: NM\_001247984

ORF Size: 1881 bp

OTI Disclaimer: The molecular sequence of this clone aligns with the gene accession number as a point of reference only. However, individual transcript sequences of the same gene can differ through naturally occurring variations (e.g. polymorphisms), each with its own valid existence. This clone is substantially in agreement with the reference, but a complete review of all prevailing variants is recommended prior to use. [More info](#)

OTI Annotation: This clone was engineered to express the complete ORF with an expression tag. Expression varies depending on the nature of the gene.

Components: The ORF clone is ion-exchange column purified and shipped in a 2D barcoded Matrix tube containing 10ug of transfection-ready, dried plasmid DNA (reconstitute with 100 ul of water).

Reconstitution Method:

1. Centrifuge at 5,000xg for 5min.
2. Carefully open the tube and add 100ul of sterile water to dissolve the DNA.
3. Close the tube and incubate for 10 minutes at room temperature.
4. Briefly vortex the tube and then do a quick spin (less than 5000xg) to concentrate the liquid at the bottom.
5. Store the suspended plasmid at -20°C. The DNA is stable for at least one year from date of shipping when stored at -20°C.

RefSeq: [NM\\_001247984.1](#), [NP\\_001234913.1](#)

RefSeq Size: 4007 bp

RefSeq ORF: 1884 bp

Locus ID: 18826

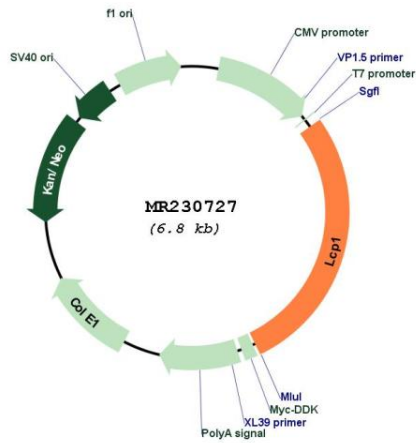
UniProt ID: [Q61233](#)

Cytogenetics: 14 39.63 cM

MW: 70.6 kDa

Gene Summary: Actin-binding protein. Plays a role in the activation of T-cells in response to costimulation through TCR/CD3 and CD2 or CD28. Modulates the cell surface expression of IL2RA/CD25 and CD69.[UniProtKB/Swiss-Prot Function]

**Product images:**



Circular map for MR230727