

Product datasheet for **MR230667**

Npnt (NM_001287101) Mouse Tagged ORF Clone

Product data:

Product Type:	Expression Plasmids
Product Name:	Npnt (NM_001287101) Mouse Tagged ORF Clone
Tag:	Myc-DDK
Symbol:	Npnt
Synonyms:	1110009H02Rik; AA682063; AI314031; Nctn; POEM
Vector:	pCMV6-Entry (PS100001)
E. coli Selection:	Kanamycin (25 ug/mL)
Cell Selection:	Neomycin



[View online »](#)

ORF Nucleotide Sequence:

>MR230667 representing NM_001287101
 Red=Cloning site Blue=ORF Green=Tags(s)

TTTTGTAATACGACTCACTATAGGGCGGCCGGAATTCGTCGACTGGATCCGGTACCGAGGAGATCTGCC
 GCC**CGCATCGCC**

ATGGCTGTGCTCCTAGCGCGGTGCTCGGTCTCGTCTACCTGCAGGTGGCTGCCGACTTCGACGGGA
 GGTGGCCAGGCAAATAGTTTCTCAATCGGCCTATGTCGCTATGGAGGCAGGATTGACTGCTGCTGGG
 CTGGGCCCGCCAGTCTGGGACAGTGCCAACCTTTCTACGTCTTAAGGCAGAGACTAGCAAGGATAAGG
 TGCCAGCTCAAAGCTGTGTGTAACCACAGTGCAAACACGGAGAGTGCCTCGGGCCAAACAAGTGCAAAT
 GTCACCTGGATTTGCTGGGAAAACCTGCAACCAAGATGAGTCTTCCACCCAACCTCTTGACCAAGG
 CAGTGAACAGCCTCTTTTCAACCCCGGATCATCAAGCCACAAATGTACCTTCAAGGGATTTAAACGAG
 TGTGGCCTGAAGCCTCGGCCCTGAAGCACAGGTGCATGAACACTTTCGGCAGCTACAAGTGTACTGTC
 TCAACGGATACATGCTGCTGCCAGACGGGTCTGCTCAAGTGCCTATCGTGTTCATGGCAAACGTCA
 GTATGGCTGTGAGTGGTCAAAGGACAGGTCCGATGTCAGTGTCCATCCCCTGGCCTGCAGCTAGCTCCC
 GATGGGAGGACCTGTGTGGATATTGATGAATGTGCGACTGGAAGAGTCTCCTGCCCTCGATTTAGGCAGT
 GTGTCAACACGTTTGGGAGCTACATCTGCAAGTGTCACTGGTTTCGACCTCATGTACATTGGAGGCAA
 ATATCAGTGCCATGACATCGACGAGTGTCTCTTGGACAGCACCAGTGTAGCAGCTATGCCCGGTGTAC
 AACATACATGGTCTACAAGTGCCAAATGTAGAGATGGATACGAGGGGGATGGACTGAACTGTGTGTATA
 TCCCCAAAGTCATGATTGAACCTTCAGGTCCAATCCATATGCCAGAAAGAAATGGTACAATCTCAAAGGG
 TGATGGAGGACATGCGAATAGGATTCCTGATGCTGGAAGTACAAGGTGGCCCTGAAGACACCATATATT
 CCTCCTGTCAATACCAACAGGCCTACTTCCAAGCCAACAACAAGACCTACACCAAACCCACACCACAGC
 CTACTCCACCACCTCCACCACCCTCCCGACAGAGCCCGAACAACCTCCACTACCACCAAACCCAGAAAG
 GCCATCTACCAGACCACCACTATAGCACCTGCTACCAGTACCACTACACGAGTAATTACGGTTGACAAC
 AGGATACAGACGGATCCTCAGAAACCCAGAGGAGATGTGTTTCCACGGCAGCCGACAAATGACCTGT
 TTGAGATATTTGAAATCGAAAGAGGGGTGAGCGCGGATGAGGAAGTAAAGGACGACCCAGGTATTCTCAT
 ACACAGCTGCAATTTTGACCATGGACTCTGTGGATGGATCAGAGAAAAAGATAGTGACTTGCCTGGGAG
 ACAGCCAGGGACCCAGCAGGTGGACAGTATCTCACAGTGTCTGCAGCCAAAGCCCGGGGGGAAAGCCG
 CTCGTTGGTGTACGTCTCGGCCACCTCATGCATTCAGGGGACCTGTGCTGTCTTTAGGCACAAGGT
 GACTGGGTGCACTCGGGCACACTGCAGGTGTTTGTGAGGAAACACGGTACCCACGGAGCAGCCCTGTGG
 GGAAGAAATGGTGGCCATGGCTGGAGGCAAACCCAGATCACCTTTCGAGGGGCTGACGTCAAAGCGTCA
 TCTTCAAAGGTGAAAAAGGCGTGGTACACGGGGGAGATTGGATTGGATGATGTGAGCTTGAAAAGAGG
 TCCTGTC

ACGCGTACGCGGCCGCTCGAGCAGAAACTCATCTCAGAAGAGGATCTGGCAGCAAATGATATCCTGGATT
 ACAAGGATGACGACGATAAGGTTTAA

Protein Sequence:

>MR230667 representing NM_001287101
 Red=Cloning site Green=Tags(s)

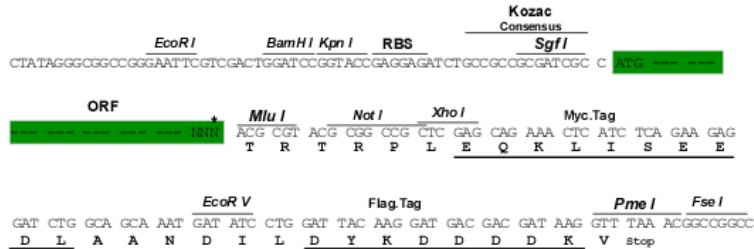
MAVLLAAVLASSLYLQVAADFGRWPRQIVSSIGLCRYGGRIDCCWGWARQSWGQCQPFYVLRQRLARIR
 CQLKAVCQPQCKHGEVGPKNCKCHPGFAGKTCNQDESFHPTPLDQGEQPLFQPPDHQATNVPSRDLNE
 CGLKPRPCKHRCMNTFGSYKCYCLNGYMLLPDGSCSSALSCSMANQYGCQDVVKQVRCQCPSPGLQLAP
 DGRTCVDIDECATGRVSCPRFRQCVNTFGSYICKHTGFDLMIYGGKYQCHDIDECSLGQHQCSSYARCY
 NIHGSKYKQCRDGYEGDGLNCVYIPKVMIEPSGPIHMPERNGTISKGDGGHANRIPDAGSTRWPLKTPYI
 PPVITNRPTSKPTTRPTNPPTPQTPPPPPPLPTEPRTTLPPTPERPSTRPTTIAPATSTTTRVITVDN
 RIQTDPQKPRGDVFIHQPTNDLFEIFEIERGVSADEEVKDDPGILIHSCNFDHGLCGWIREKSDSLHWE
 TARDPAGGQYLTVSAAKAPGGKAARLVRLGHLMHSGDLCLSFRHKVTGLHSGTLQVFRKHGHTGAALW
 GRNGGHGWRQTQITLRGADVKSIVFKGEKRRGHTGEIGLDDVSLKRGRC

TRTRPLEQKLISEEDLAANDILDYKDDDDKV

Restriction Sites: SgfI-MluI

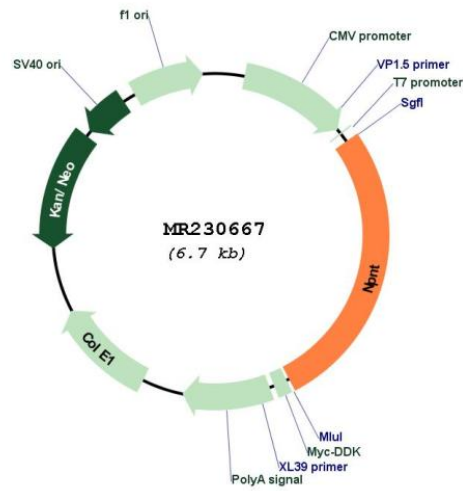
Cloning Scheme:

Cloning sites used for ORF Shuttling:



* The last codon before the Stop codon of the ORF

Plasmid Map:



ACCN: NM_001287101

ORF Size: 1827 bp

OTI Disclaimer:	The molecular sequence of this clone aligns with the gene accession number as a point of reference only. However, individual transcript sequences of the same gene can differ through naturally occurring variations (e.g. polymorphisms), each with its own valid existence. This clone is substantially in agreement with the reference, but a complete review of all prevailing variants is recommended prior to use. More info
OTI Annotation:	This clone was engineered to express the complete ORF with an expression tag. Expression varies depending on the nature of the gene.
Components:	The ORF clone is ion-exchange column purified and shipped in a 2D barcoded Matrix tube containing 10ug of transfection-ready, dried plasmid DNA (reconstitute with 100 ul of water).
Reconstitution Method:	<ol style="list-style-type: none"> 1. Centrifuge at 5,000xg for 5min. 2. Carefully open the tube and add 100ul of sterile water to dissolve the DNA. 3. Close the tube and incubate for 10 minutes at room temperature. 4. Briefly vortex the tube and then do a quick spin (less than 5000xg) to concentrate the liquid at the bottom. 5. Store the suspended plasmid at -20°C. The DNA is stable for at least one year from date of shipping when stored at -20°C.
RefSeq:	NM_001287101.1 , NP_001274030.1
RefSeq Size:	4763 bp
RefSeq ORF:	1830 bp
Locus ID:	114249
UniProt ID:	Q91V88
Cytogenetics:	3 G3
MW:	67.5 kDa
Gene Summary:	Functional ligand of integrin alpha-8/beta-1 in kidney development. Regulates the expression of GDNF with integrin alpha-8/beta-1 which is essential for kidney development. May also play a role in the development and function of various tissues, regulating cell adhesion, spreading and survival through the binding of several integrins.[UniProtKB/Swiss-Prot Function]