

Product datasheet for **MR230639**

Repin1 (NM_001079903) Mouse Tagged ORF Clone

Product data:

Product Type:	Expression Plasmids
Product Name:	Repin1 (NM_001079903) Mouse Tagged ORF Clone
Tag:	Myc-DDK
Symbol:	Repin1
Synonyms:	AI425994; Ap4; E430037F08Rik; Zfp-464; Zfp464
Vector:	pCMV6-Entry (PS100001)
E. coli Selection:	Kanamycin (25 ug/mL)
Cell Selection:	Neomycin



[View online »](#)

ORF Nucleotide Sequence:

>MR230639 representing NM_001079903
 Red=Cloning site Blue=ORF Green=Tags(s)

TTTTGTAATACGACTCACTATAGGGCGGCCGGGAATTCGTCGACTGGATCCGGTACCGAGGAGATCTGCC
 GCC**GCGATCGCC**

ATGGATGGGCGCTGCGTCCCTGGAGGGACGCGGGAGAGTTTTCTCTGTTCATCCGGGGCTACCGAAGTG
 TGGGCCGAAGCAGCCGAAGTCTCCCCAGGAACATCCCCAGAAGGAGCTGGAAAAAGCCTACCCCCAGCT
 CTTTCAGTCTTCAGGCAGAGGAAGAACCAGTCTGGAACAGCGCTGCAGGGGCCCCACGGCCATGGGCCCA
 GCTCAGCCCTGGCTCTTTTCTGGGCCCTCCCAGGAGTCTCCCAGCCGACAGAGGGTTGAGGTACCAGG
 GCAAAATCAGCTCAGCCAAGAGGGCAAACCCAGGCAAGGTCCATCGTTGTGCCACTGTCGGAAGCGCTT
 CCCGGGCTGGGTGGCCCTGTGGCTTTCATGCTCGCGGTGCCAGGCCCGGCTGCCTCTGCCCTGCCATGAA
 TGCAACCAGCGCTTCGCCACGCCCTTCTTAGCGTGCATCTTCAGGTTTCATGCTTCTGCAGTCCCCG
 ACCTGGGTTTCATCTGCCACCTATGTGGGCATAGCTTCCGAGGATGGGTAGCCCTGGTTCTGCATCTGCC
 GGCTCACTCAGCTTCAAAGCGGCCCATCACTTGCCTGAATGCGACAGACGCTTCTGGCGACAAAAACAG
 CTTTCGAGCTCATCTGCGAAGGTGCCAGCCCCCTGTCCCTGAGGCCCGGCCCTTCATATGCGGCAACTGTG
 GCCGGAGCTTTGCCCAATGGGACCAACTGGTTGTTTACAAAGCGGGTGCACGTGGCTGAGGCCCTGGAGGA
 GGCAGCAGCAAAGCCCTGGGTCTCGCCACGAGGACGTCCCGCAGCTCCCAGGCCCTGGTGGAGACGCT
 GTGGACCGCCCCCTCCAGTGTGCTGCTGCGCAAGCGTTTCCGCCACAAGCCCAATCTGATCGCCACC
 GCCCGGTGCACACTGGTGGCGACACACCAAGTCCCAGAGTGGCGGAAGCGTTTACCAACAAGCCCTA
 CCTGACCTCGCACCGCGCATACATACCGGCGAGAAGCCCTACCCATGCACCGAGTGTGGCCGCCGCTTC
 CGCCACAACCAACCTGTTGTGCACAGCAAAATCCACAAGCGCTTGGAGGTTCTCAGCGCAGGCTGCC
 CACACCCGAGAGTACCAGATTGCAGCAGAGCCTATGGCACAACCTGCATTTGGGGTGCCTTGGGGTGC
 CCCGCGGACCCAGCTGAGGCACCTGCGCTCTGCATAGCTGCTCCGACTGCGGCGCAGCTTCCGGCTG
 GAGCGTCTCTGCGGCTACACCAGAGGACACACAGGGGAGAGGCCCTTCCGCTGCACAGAGTGTGGCA
 AGAACTTCGGCAAGAAGACGCACCTGGTGGCGCACTCACGCGTGCACCTCCGGCAACGTCCCTTCCGCTG
 CGAGGAGTGTGGTCCGCTTCTCACAGGGCAGCCACCTGGCAGCCACCAGGCGAGACCATGCACAGAG
 AGGCCCTTCGTGTGCCCGACTGCGGCAAGGCTTCCGCCACAAGCCCTACCTGGCTGCGCACCGACGCA
 TCCACACAGGCGAGAAACCTATGTGTGTCGCGACTGTGGCAAAGCTTTCAGTCAGAAGTCCAACCTGGT
 GTCCACCGGCGCATCCACACAGGCGAGCGCCCTACGCTGCCCGACTGTGATCGTAGCTTCAGTCAG
 AAGTCCAATCTTATCACACCCGAAGGCCACATCCGGGATGGCGCTTCTGTTGTGCCATCTGTGGCC
 AGACCTTTGATGACGAGGACCGACTCTTGATGCACCAGAAGAAGCATGATGCC

AG**GCGACCG**ACGCGTACGCGGCCGCTCGAGCAGAACTCATCTCAGAAGAGGATCTGGCAGCAAATGATATCC
 TGGATTACAAGGATGACGACGATAAGGTTTAA

Protein Sequence:

>MR230639 representing NM_001079903
 Red=Cloning site Green=Tags(s)

MDGRCVPGGHAGEFSLSSGGYRSVGRSSRSLPRNIPRRSWKKPHQPQLFSLQAEPEPMLERCRGPTAMGP
 AQPWLFSGPSQESSQPDRLRYQKSAQPRGQTPGKVHRCACHCRKRFPGWVALWLHARRQARLPLPCHE
 CNQRFRRHAPFLALHLQVHASAVPDLGFICHLCGHSFRGWVALVLHLRAHSASKRPITCPECDRRFWRQKQ
 LRAHLRRCQPPVPEARPFICGNCGRSFAQWDQLVVHKRVHVAEALAEAAKALGPRPRGRPAAPRPGGDA
 VDRPFQACCGKRRFRHKPNLIAHRRVHTGERPHQCPECGKRFTNKPYLTSRRRIHTGEKPYPCTECGRRF
 RHKPNLLSHSKIHKRLEVSAQAAPHESHQIAAEPMAQPALGVPLGSPRTPAEAPALLHSCSDCGRSFRL
 ERFLRLHQHQHTGERPFACTECGNFNGKTHLVAHSRVHSGERPFACEECGRRFSQGSHLAAHRRDHAPE
 RPFVCPDCGKAFRHKPYLAAHRRRIHTGEKPYVCPDCGKAFSQAQSNLVSHRRRIHTGERPYACPDRCRSFSQ
 KSNLITHRKSHIRDGAFCCAICGQTFDDEDRLLMHQKHDA

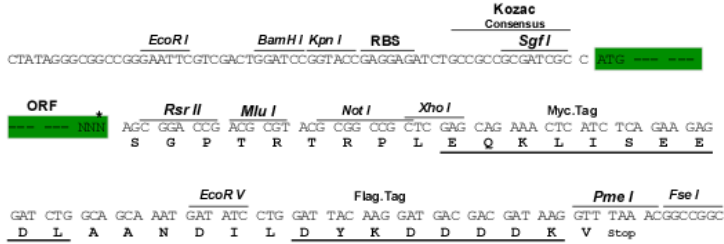
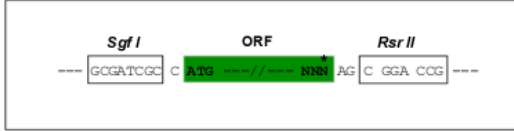
SGPTRTRPLEQKLI**SEEDLAANDILDYKDDDDKV**

Restriction Sites:

SgfI-RsrII

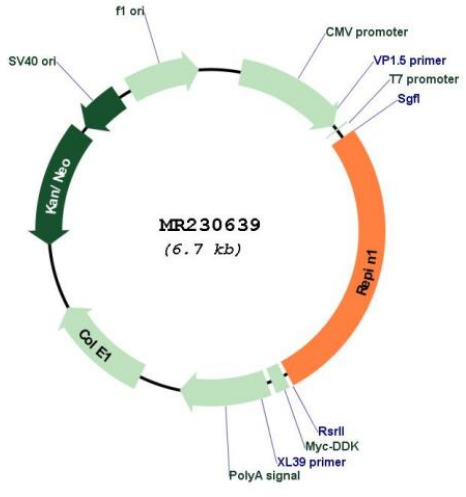
Cloning Scheme:

Cloning sites used for ORF Shuttling:



* The last codon before the Stop codon of the ORF

Plasmid Map:



ACCN: NM_001079903
 ORF Size: 1803 bp

OTI Disclaimer:	The molecular sequence of this clone aligns with the gene accession number as a point of reference only. However, individual transcript sequences of the same gene can differ through naturally occurring variations (e.g. polymorphisms), each with its own valid existence. This clone is substantially in agreement with the reference, but a complete review of all prevailing variants is recommended prior to use. More info
OTI Annotation:	This clone was engineered to express the complete ORF with an expression tag. Expression varies depending on the nature of the gene.
Components:	The ORF clone is ion-exchange column purified and shipped in a 2D barcoded Matrix tube containing 10ug of transfection-ready, dried plasmid DNA (reconstitute with 100 ul of water).
Reconstitution Method:	<ol style="list-style-type: none">1. Centrifuge at 5,000xg for 5min.2. Carefully open the tube and add 100ul of sterile water to dissolve the DNA.3. Close the tube and incubate for 10 minutes at room temperature.4. Briefly vortex the tube and then do a quick spin (less than 5000xg) to concentrate the liquid at the bottom.5. Store the suspended plasmid at -20°C. The DNA is stable for at least one year from date of shipping when stored at -20°C.
RefSeq:	NM_001079903.1 , NP_001073372.2
RefSeq Size:	3106 bp
RefSeq ORF:	1806 bp
Locus ID:	58887
UniProt ID:	Q5U4E2
Cytogenetics:	6 B2.3
MW:	68.5 kDa
Gene Summary:	Sequence-specific double-stranded DNA-binding protein required for initiation of chromosomal DNA replication. Binds on 5'-ATT-3' reiterated sequences downstream of the origin of bidirectional replication (OBR) and a second, homologous ATT sequence of opposite orientation situated within the OBR zone. Facilitates DNA bending (By similarity). [UniProtKB/Swiss-Prot Function]