

Product datasheet for **MR230616**

Numb (NM_001272056) Mouse Tagged ORF Clone

Product data:

Product Type:	Expression Plasmids
Product Name:	Numb (NM_001272056) Mouse Tagged ORF Clone
Tag:	Myc-DDK
Symbol:	Numb
Synonyms:	m-num; Nb
Vector:	pCMV6-Entry (PS100001)
E. coli Selection:	Kanamycin (25 ug/mL)
Cell Selection:	Neomycin



[View online »](#)

ORF Nucleotide Sequence:

>MR230616 representing NM_001272056
 Red=Cloning site Blue=ORF Green=Tags(s)

TTTTGTAATACGACTCACTATAGGGCGGCCGGAATTCGTCGACTGGATCCGGTACCGAGGAGATCTGCC
 GCC**GCGATCGCC**

ATGAACAAACTACGGCAAAGCTTCAGGAGAAAGAACGTTTATGTCCCAGAGGCCAGCCGTCCACATC
 AGTGGCAGACAGATGAAGAAGGAGTCCGCACTGGAAAGTGTAGCTTCCCAGTTAAGTACCTCGGCCACGT
 AGAAGTTGATGAGTCAAGAGGAATGCACATCTGTGAAGATGCCGTAAGAGATTGAAAGCTACGGGAAAG
 AAAGCAGTGAAGGCCGTTCTGTGGGTGTGAGCGGATGGGCTCAGAGTTGTGGACGAGAAAATAAGGACC
 TCATAGTTGACCAGACAATAGAAAAAGTTTCTTCTGTGCCCCAGATAGGAACTTTGACAGAGCCTTTTC
 TTACATATGTCGTGATGGCACCCTCGGCGATGGATCTGTCTATTGTTTCATGGCTGTCAAAGACACGGGG
 GAAAGACTGAGCCAGCCGTGGGCTGTGCTTTTGCAGCCTGTTTAGAGCGTAAACAGAAGCGGGAGAAGG
 AGTGTGGCGTCACTGCTACTTTTGTAGCCAGTAGAACCCTTTCACAAGAGAAGGATCATTCCGTGTAC
 AACTGCCACTGAGCAAGCCGAAAGAGAGGAGATCATGAAACAGTTGCAAGATGCCAAGAAAGCTGAGACA
 GACAAGACAGTTGTTGGTCCATCAGTGGCTCCTGGCAACTGCTCCATCCCCATCCTCTCCACCTCTC
 CCACTCCGGATGGCACTGCATCTTCAGAGATGAACAATCCCCATGCTATCCCACGCCGGCATGCACCAAT
 TGAACAGCTTGTCTGTCGAAGGCTTTTCCGGGGATTTCTGCTCTTAGCCAGAAGATGTCACCCTTTAAA
 CGCCAGCTGTCCCTACGCATCAATGAGTTGCCCTTCCACTATGCAGAGGAAGACCGATTTCCCAATAAAAA
 ACACAGTGCCCGAGGTGGAAGGAGAGGCCGAGAGCATCAGCTCCTTGTGTTCCAGATCACCAGTGCCTT
 CAGCACGCCCTCTGAGGACCCCTTCTCCTCCGCCCAATGACCAAAACAGTGACATTGGTGGCACCACAG
 TCTCCTGTGTTACAAGGGACTGAGTGGGTGAGTCTTCTGAGTGCCTCCAGGTCTCTCCAGGCTG
 GTCACAGACGCACTCCCTCTGAAGCTGACCGCTGGTTAGAAGAAGTGTCAAAGAGTGTGCGGGCCAGCA
 GCCTCAGGTCTCAGCTGCCCTCTGCAGCCAGTTCTCCAGCCGCTCCGCCCGCCGCCATTGCCCTCCA
 GCACCTCCTTTCAAGGACATGCCTTCTCACGTCCCAGCCTGTGCCCGTGGGTGTGGTCCACCCCTAC
 AACCCAGCTTTGTCCCTACCCAGTCTACCCTGTGGCCAACGGGATGCCCTACCCAGCCTTAATGTGCC
 TGTAGTGGGCATCACCCATCCCAGATGGTAGCCAATGTGTTGGCACTGCAGGCCACCCTCAGACAAT
 CATCCACATCAGTCGCCAAGCCTGGCCAAGCAGCAGACATTCCCTCAATATGAGACAAGTAGTGCTACCA
 CCAGTCCCTTCTTAAGCCTCCTGCTCAGCACCTCAATGGTCTGCAGCTTCAATGGTGTAGACAAATGG
 TGGGCTAGCCTCAGAAACAGGCATGCAGAAGTCCCTCCAGGCACCTGCCAGTGGATCCTTTGCAAGCT
 CAGTGGGCGCACTAGAAAGCAAGTCCAAGCAGCGTACAATCCTTCTCCTACCAACCCTTCTCCAGT
 ACTTACAGAAAACATTTGAAATAGAATT

ACGCGTACGCGGCCGCTCGAGCAGAAACTCATCTCAGAAGAGGATCTGGCAGCAAATGATATCCTGGATT
 ACAAGGATGACGACGATAAGGTTTAA

Protein Sequence:

>MR230616 representing NM_001272056
 Red=Cloning site Green=Tags(s)

MNKLKQSFRRKRDVYVPEASRPHQWQTDDEEGVRTGKCSFPVKYLGHVEVDES RGMHICEDAVKRLKATGK
 KAVKAVLWVSADGLRVVDEKTKDLIVDQTIKVSFCAPDRNFDRAFSYICRDGTRRRWICHCFMAVKDTG
 ERLSHAVGCAFAACLERKQKREKECGVTATFDASRTTFTREGSFRVTTATEQAEREEIMKQLQDAKKAET
 DKTVVGGPSVAPGNTAPSPSSPTSPDPDGTASSEMNNPHAIIPRRHAPIEQLARQGSFRGFPALSQKMSPFK
 RQLSLRINELPSTMQRKTDPIKNTVPEVEGEAESISSLCSQITSAFSTPSEDPFSSAPMTKPVTLVAPQ
 SPVLQGTWQSSGAASPLFQAGHRRTPSEADRWLEEVSKSVRAQQPQVSAAPLQPVLPVPPPPAAIAPP
 APPFQGHAFLLTSQPVVGVVPLQPAFVPTQSYPVANGMPYPASNVPVVGITPSQMVANVFGTAGHPQTT
 HPHQSPSLAKQQTFFQYETSSATSPFFKPPAQHLNNGSAFNGVDNGLASGNRHAIEVPPGTCVDFPFEA
 QWAALESKSKQRTNPSPTNPFSSDLQKTFEIEL

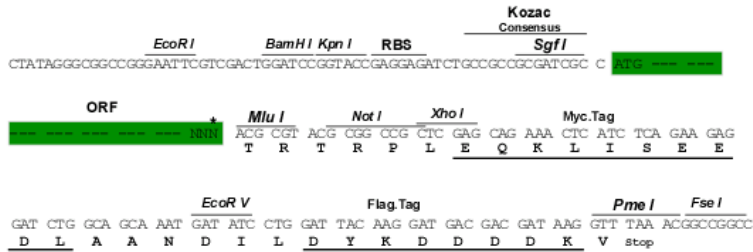
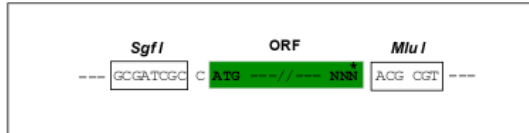
TRTRPLEQKLISEEDLAANDILDYKDDDDKV

Restriction Sites:

SgfI-MluI

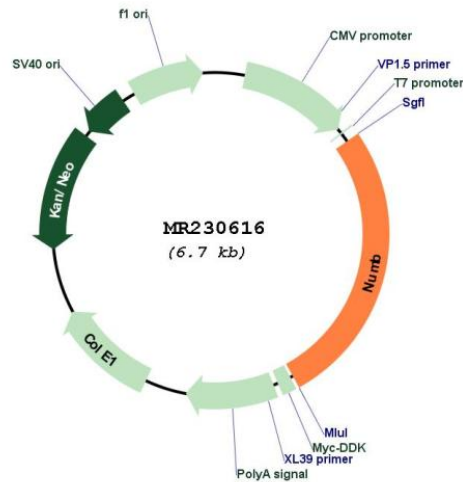
Cloning Scheme:

Cloning sites used for ORF Shuttling:



* The last codon before the Stop codon of the ORF

Plasmid Map:



ACCN: NM_001272056

ORF Size: 1779 bp

OTI Disclaimer:	The molecular sequence of this clone aligns with the gene accession number as a point of reference only. However, individual transcript sequences of the same gene can differ through naturally occurring variations (e.g. polymorphisms), each with its own valid existence. This clone is substantially in agreement with the reference, but a complete review of all prevailing variants is recommended prior to use. More info
OTI Annotation:	This clone was engineered to express the complete ORF with an expression tag. Expression varies depending on the nature of the gene.
Components:	The ORF clone is ion-exchange column purified and shipped in a 2D barcoded Matrix tube containing 10ug of transfection-ready, dried plasmid DNA (reconstitute with 100 ul of water).
Reconstitution Method:	<ol style="list-style-type: none">1. Centrifuge at 5,000xg for 5min.2. Carefully open the tube and add 100ul of sterile water to dissolve the DNA.3. Close the tube and incubate for 10 minutes at room temperature.4. Briefly vortex the tube and then do a quick spin (less than 5000xg) to concentrate the liquid at the bottom.5. Store the suspended plasmid at -20°C. The DNA is stable for at least one year from date of shipping when stored at -20°C.
RefSeq:	NM_001272056.1 , NP_001258985.1
RefSeq Size:	3432 bp
RefSeq ORF:	1782 bp
Locus ID:	18222
UniProt ID:	Q9QZS3
Cytogenetics:	12 D1
MW:	64.8 kDa
Gene Summary:	This gene encodes a conserved protein that is distributed asymmetrically during cell division in the developing embryo. The encoded protein participates in cell fate decisions by interacting with the Notch receptor. Loss of function of this gene results in severe defects in neural development and loss of viability. Alternative splicing results in multiple transcript variants. [provided by RefSeq, Jan 2013]