

## Product datasheet for **MR230588**

### **Epn2 (NM\_001252189) Mouse Tagged ORF Clone**

#### **Product data:**

Product Type:	Expression Plasmids
Product Name:	Epn2 (NM_001252189) Mouse Tagged ORF Clone
Tag:	Myc-DDK
Symbol:	Epn2
Synonyms:	9530051D10Rik; AA536924; lbp2
Vector:	pCMV6-Entry (PS100001)
E. coli Selection:	Kanamycin (25 ug/mL)
Cell Selection:	Neomycin



[View online »](#)

**ORF Nucleotide Sequence:**

>MR230588 representing NM\_001252189  
 Red=Cloning site Blue=ORF Green=Tags(s)

TTTTGTAATACGACTCACTATAGGGCGGCCGGAATTCGTCGACTGGATCCGGTACCGAGGAGATCTGCC  
 GCC**CGGATCGCC**

ATGACAATTCATCTATCAGACGGCAGATGAAAAACATTGTGAACAATTACTCAGAGGCTGAAATCAAAG  
 TCCGGGAGGCCACTCCAATGACCCGTGGGGCCCATCCAGCTCTCTGATGACTGAGATTGCTGACCTGAC  
 CTAACAATGTGGTAGCGTTCTCGGAGATCATGAGCATGGTTTGAAGCGACTTAATGACCATGGCAAGAAC  
 TGGCGGCATGTATAAAGGCACTGACACTGCTGGACTACCTTATCAAGACAGTTCTGAGCGGTGGCCC  
 AGCAGTGCCGTGAGAACATCTTTGCCATACAGACTCTGAAGGACTTTCAGTACATTGACCGTGATGGCAA  
 AGACCAGGGTATTAACGTTGAGAGAAAATCAAAGCAACTGGTTGCGCTCCTCAAGGATGAGGAGCGGCTG  
 AAGTTGAGAGAGTTCAGGCTCTCAAACCAAAGAGCGCATGGCTCAGGTGGCCACTGGCGTGGGCAGCA  
 ACCAAATCACCTTTGGCCGTGGCTCCAGCCAGCCCAACCTTTCTACCAGTACTCAGAGCAGGAGTATGG  
 CAAGGCTGGGGGCTCGCCGGCATCTACCAGGCTCTACTTCCCCACGAGTATCCTCTGAGTTAGAGCAG  
 GCCCGGCCACAGACAAGCGGAGAAGAGGAGCTGCAGCTACAACCTGGCACTTGCCATGAGCAGAGAGGTTG  
 CTGAGCAGGAAGAAGCCCTCAGGCGGGGTGATGACCTCAGATTGCAGATGGCTCTGGAAGAAAGCCGGAG  
 AGACACAGTAAAAGTTCCAAAAAGAAAGAGGCGAAAGCTTGTGCAAGCCAGGCTCCCCTCCCAGCAG  
 ACTACCTTGTGGATTTAATGGATGCCCTCCCCAGCTCAGGCCCTGTTACACAGAAAAGTGGCCCTGGA  
 GTGCAGGAGCCTCTGTAACCAAGCAACCCCTGGGGTGAACAGTGGCTCCTTGAACATTACTGACCC  
 GTGGCCATCGTTTGGTACCAAGCCAGCTGCCTCTGTGGACCCCTGGGAGTACCTACCACAGCCAGCACA  
 CAGTCTGTCCCTAAGAACTCAGACCTTGGGCAGCCTCACAGCAGCCTGCCTCCAATGCTGAAAAGACAA  
 CAGATCGCTGGGAGCTGCTAAGCCAGTCTGCCTCAGGGTCTTTGAGCTCTTCAGTAATTTCAACGG  
 TACAGTTAAAGATGATTTTTCTGAATTTGACAACCTTCGAACTTCAAAAAACCAGCTGAGTCAGGGGCC  
 TCAGTGCCACCCAGGACAGCAGAACACGAGCCCTGACCTCTTTGAGTCTCAATCCTTGACTTCTGCGT  
 CAAGCAAGCCTAGCAGTGCCAGGAAAACACCTGAGTCCTTCTGGGCCCAATGCAGCCCTGGTGAACCT  
 GGACTCATTGGTGACTAAGCCTGCTCCACCAGCTCAGTCCCTTAATCCCTTCTGGCACCAGGTGCTGCT  
 GCTCCAGCCCCTGTCAACCCCTCCAGGTCAACCAGCCCCAGCCGCTGACACTGAACCAGCTCCGGGGAA  
 GCCCTGTCTGGGAAGCAGTGCATCCTTTGGGTCTGGTCCAGGGTGGAGACTGTGGCTCCCATGACCTC  
 AGTAGCTCCACACTCATCAGTGGGGCCAGTGGCTCCTCCTTGACACACTGGGCCCTACAGCAATGAAC  
 ATGGTAGGCAGTGTGGCATTCCCCATCAGCAGCTCAGTCAACAGGCACAACAAACCTTTCCTCTC

**ACGCGT**ACGCGGGCCGCTCGAGCAGAAACTCATCTCAGAAGAGGATCTGGCAGCAAATGATATCCTGGATT  
 ACAAGGATGACGACGATAAGGTTTAA

**Protein Sequence:**

>MR230588 representing NM\_001252189  
 Red=Cloning site Green=Tags(s)

MTTSSIRRMKNI VNNYSEAEIKVREATSNDPWGPSSSLMTEIADLTYNVVFSEIMSMVWKRLNDHGKN  
 WRHVYKAL TLLDYL IKTGSERVAQQCRENIFAIQTLKDFQYIDRDGKDQGINVREKSKQL VALLKDEERL  
 KVERVQALKTKERMAQVATGVGSNQITFGRGSSQPNLSTSYSEQEYKGAGGSPASVHGSTSPRVSELEQ  
 ARPQTSGEELQLQLALAMSREVAEQEERLRRGDDLRLQMALEESRRDVTKVPKKEAKACCKPGSHSQQ  
 TLLDLMDALPSSGPVTQKTEPWSAGASANQTNPWGGTVAPSNITDPWPSFGTKPAASVDPWGVPTTAST  
 QSVPKNSDPWAASQQPASNAGKTTDAWGAAPSSASGSFELFSNFNGTVKDDFSEFDNLRTSKKPAESGA  
 SVPPQDSRTTSPDLFESQSLTSASSKPSSARKTPESFLGPNAALVNLDLVTKPAPPAQSLNPFLAPGAA  
 APAPVNPQVNPQPLTLNQLRGSPLGSSASFGSGPGVETVAPMTSVAPHSSVVGASGSSLTPLGPTAMN  
 MVGSVGIPPSAAQSTGTTNPFL

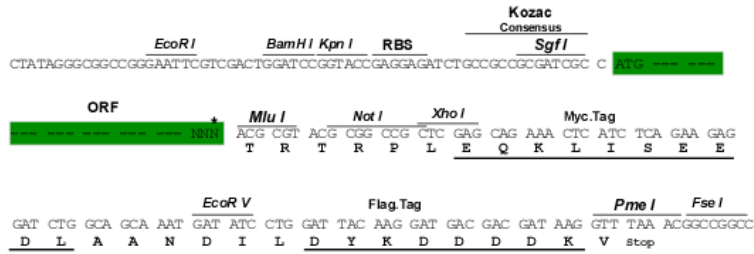
**TRTRPLEQKLI**SEEDLAANDILDYKDDDDKV

**Restriction Sites:**

Sgfl-MluI

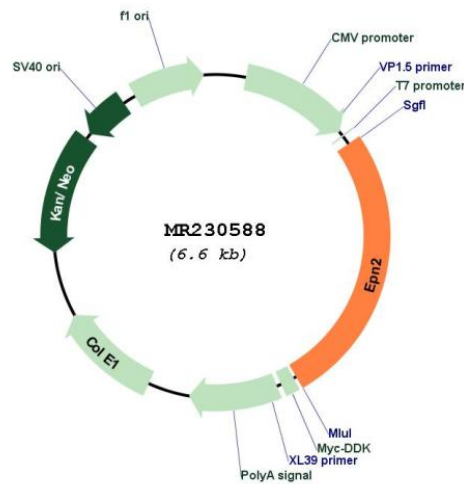
Cloning Scheme:

Cloning sites used for ORF Shutting:



\* The last codon before the Stop codon of the ORF

Plasmid Map:



ACCN: NM\_001252189  
 ORF Size: 1749 bp

<b>OTI Disclaimer:</b>	The molecular sequence of this clone aligns with the gene accession number as a point of reference only. However, individual transcript sequences of the same gene can differ through naturally occurring variations (e.g. polymorphisms), each with its own valid existence. This clone is substantially in agreement with the reference, but a complete review of all prevailing variants is recommended prior to use. <a href="#">More info</a>
<b>OTI Annotation:</b>	This clone was engineered to express the complete ORF with an expression tag. Expression varies depending on the nature of the gene.
<b>Components:</b>	The ORF clone is ion-exchange column purified and shipped in a 2D barcoded Matrix tube containing 10ug of transfection-ready, dried plasmid DNA (reconstitute with 100 ul of water).
<b>Reconstitution Method:</b>	<ol style="list-style-type: none"><li>1. Centrifuge at 5,000xg for 5min.</li><li>2. Carefully open the tube and add 100ul of sterile water to dissolve the DNA.</li><li>3. Close the tube and incubate for 10 minutes at room temperature.</li><li>4. Briefly vortex the tube and then do a quick spin (less than 5000xg) to concentrate the liquid at the bottom.</li><li>5. Store the suspended plasmid at -20°C. The DNA is stable for at least one year from date of shipping when stored at -20°C.</li></ol>
<b>RefSeq:</b>	<a href="#">NM_001252189.2</a>
<b>RefSeq Size:</b>	4230 bp
<b>RefSeq ORF:</b>	1752 bp
<b>Locus ID:</b>	13855
<b>UniProt ID:</b>	<a href="#">Q8CHU3</a>
<b>Cytogenetics:</b>	11 B2
<b>MW:</b>	62.7 kDa
<b>Gene Summary:</b>	Plays a role in the formation of clathrin-coated invaginations and endocytosis. [UniProtKB/Swiss-Prot Function]