

Product datasheet for **MR230569**

Pdp1 (NM_001290387) Mouse Tagged ORF Clone

Product data:

Product Type:	Expression Plasmids
Product Name:	Pdp1 (NM_001290387) Mouse Tagged ORF Clone
Tag:	Myc-DDK
Symbol:	Pdp1
Synonyms:	Gm1024; Ppm2c
Vector:	pCMV6-Entry (PS100001)
E. coli Selection:	Kanamycin (25 ug/mL)
Cell Selection:	Neomycin



[View online »](#)

ORF Nucleotide Sequence:

>MR230569 representing NM_001290387
 Red=Cloning site Blue=ORF Green=Tags(s)

TTTTGTAATACGACTCACTATAGGGCGGCCGGGAATTCGTCGACTGGATCCGGTACCGAGGAGATCTGCC
 GCC**GCGATCGCC**

ATGGAGCGGGCGGGTGCCTGTCCGGCTCCTGGAGTTGCCCGCGGGGGCTGTGATGCCGCTCGCC
 TGCCGGGAATCCCAGTCAGAACGTCCAGTCTGCCACTGTTCTCTGATGCCATGCCAGACCAACTCAACT
 GTTTTTCTCTCGTCCGTAACGTGAAGTACGAGCAATCTATGGCACTGCATGTTACTGCCACCACAAA
 CATCTCTGCTGTTACCACCATACATTCCTCAGAATCGTCTGAGGTACACACCCCATCTGCATATGCTA
 CCTTTTGTAGGCCACGGGAGAACTGGTGGCAGTAACTCAAGGAAGGAGATACGTTCTACACCGCAGAA
 ATTTTACCTCACACCTCCACAAGTCAACAGCATCCTTAAAGCTAATGAATACAGCTTCAAAGTACCAGAA
 TTTGATGGCAAAAATGTCAGTCCATTCTGGATTTGACAGCAATCAGCTGCCTGCAAAATGCACCCATAG
 AGGACCGGAGAAGTGCAGCAACCTGCTTGACAGACCAGAGGGATGCTCTTGGGGTTTTTGTGGTATGC
 AGGCTGTGCTTGTCCCAGGCAGTCAGTAAAGACTCTTCTATTATATTGCTGTTTCCTTGTGCCCAT
 GAGACTTTGCTAGAGATTGAAAATGCAGTGGAGAGTGGTCCGGCCTGCTACCTATCCTTCAAGTGGCACA
 AGCACCCCAATGATTACTTCAAGTAAAGAGGCGTCCAAATTGTATTTCAACAGCTTGGAGCTTACTGGCA
 AGAACTCATAGACCTCAATACTGGAGAATCAGCTGATATTGATGTTAAGGAGGCTTAAATTAATGCTTTC
 AAGAGACTCGATAATGACATTTTATTGGAGGCTCAAGTTGGTATCCTAATTTCTTTCTAAATTACCTGG
 TGCTTCGGGTAGCATTTTCTGGGGCTACTGCTTGTGTGGCCCATGTAGATGGTGTGACCTCCATGTGGC
 TAACACTGGTGATAGTAGACCATGCTAGGTGTGCAAGAAGAAGTGGCTCTTGGTCAGCAGTCAACTC
 TCAATGACCACAATGCTCAGAATGAAAGAGAAGTAAAGAGAGTAAAGAGTAAAGAGTAAAGAGTAAAG
 CCAAGAGCGTGGTAAAGCAGGACCGGCTGCTTGGCTTGGCTGATGCCCTTTAGGGCTTTTGGAGATGAAA
 GTTCAAATGGAGCATTGACCTTCAAAGAGAGTAAAGAGTAAAGAGTAAAGAGTAAAGAGTAAAGAGTAA
 TACACCAAGTTTATCCCTCCTAACTATCATAACCTCCTTATCTTACTGCTGAGCCAGAGGTAACCTATC
 ACAGATTAAGGCCACAGGATAAATTCCTAGTGTAGCAACTGATGGGTTGTGGGAGACTATGCATAGACA
 GGATGTGGTTAGGATTGTGGTGAATACTTAAGTGTGATGCATACCAACAGCCAATAGCAGTTGGTGGG
 TACAAGGTGACTCTGGGACAGATGCATGGCCTTTAACAGAAAGGAGAGCAAGATGTATCAGTGTGTTG
 AGGATCAGAATGCAGCAACCCATCTCATTGCCATGCTGTAGGCAATAATGAATTTGGGGCTGTTGATCA
 TGAACGACTCTCTAAAATGCTTAGTCTTCTGAAGAGCTTGTCTGGATGTATAGAGATGACATTACAATC
 ATTGTAGTTCAGTCAATTCTCATGTTGTAGGGGCATACCAAACAGGAACAG

ACGCGTACGCGGGCCGCTCGAGCAGAAACTCATCTCAGAAGAGGATCTGGCAGCAAATGATATCCTGGATT
 ACAAGGATGACGACGATAAGGTTTAA

Protein Sequence:

>MR230569 representing NM_001290387
 Red=Cloning site Green=Tags(s)

MERRRCACPGSWSCPPGAVMPPRLPGIPVRTSSLPLFSDAMPAPTQLFFPLVRNCELSRIYGTACYCHHK
 HLCCSPPIYQNRRLRYTPHPAYATFCRPRENWWQYTGRRYASTPQKFYLPQPQVNSILKANEYSFKVPE
 FDGKNVSSILGFDSNQLPANAPIEDRRSAATCLQTRGMLLGVDGHAGCACSQAVSERLFYYIAVSLLPH
 ETLLIEINAVESGRALLPILQWHKHPNDYFSKEASKLYFNLSLRTYWQELIDLNTGESADIDVKEALINAF
 KRLDNDISLEAQVGPNSFLNLYLVRVAFSGATACVAHVVDGVDLHVANTGDSRAMLGVQEEDGWSAVTL
 SNDHNAQNERELERLKEHPKNEAKSVVKQDRLLGLLMPFRAFGDVKFKWSIDLQKRVIESGPDQLNDNE
 YTKFIPPNYHTPPYLTAEPVYHRLRPQDKFLVATDGLWETMHRQDVVRIVGEYLTGMHHQPIAVGG
 YKVTLGQMHGLLTERRAKMSSVFEDQNAATHLIRHAVGNNEFGAVDHERLSKMLSLPEELARMYRDDITI
 IIVVQFNHVVGGAYQNQEQ

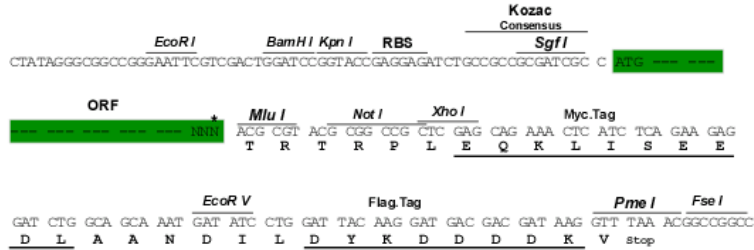
TRTRPLEQKLISEEDLAANDILDYKDDDDKV

Restriction Sites:

Sgfl-MluI

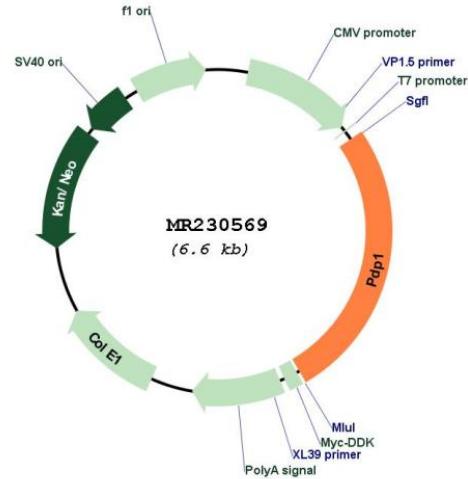
Cloning Scheme:

Cloning sites used for ORF Shutting:



* The last codon before the Stop codon of the ORF

Plasmid Map:



ACCN: NM_001290387

ORF Size: 1734 bp

OTI Disclaimer:	The molecular sequence of this clone aligns with the gene accession number as a point of reference only. However, individual transcript sequences of the same gene can differ through naturally occurring variations (e.g. polymorphisms), each with its own valid existence. This clone is substantially in agreement with the reference, but a complete review of all prevailing variants is recommended prior to use. More info
OTI Annotation:	This clone was engineered to express the complete ORF with an expression tag. Expression varies depending on the nature of the gene.
Components:	The ORF clone is ion-exchange column purified and shipped in a 2D barcoded Matrix tube containing 10ug of transfection-ready, dried plasmid DNA (reconstitute with 100 ul of water).
Reconstitution Method:	<ol style="list-style-type: none"> 1. Centrifuge at 5,000xg for 5min. 2. Carefully open the tube and add 100ul of sterile water to dissolve the DNA. 3. Close the tube and incubate for 10 minutes at room temperature. 4. Briefly vortex the tube and then do a quick spin (less than 5000xg) to concentrate the liquid at the bottom. 5. Store the suspended plasmid at -20°C. The DNA is stable for at least one year from date of shipping when stored at -20°C.
RefSeq:	NM_001290387.1 , NP_001277316.1
RefSeq Size:	4149 bp
RefSeq ORF:	1737 bp
Locus ID:	381511
UniProt ID:	Q3UV70
Cytogenetics:	4 A1
MW:	65.9 kDa
Gene Summary:	Catalyzes the dephosphorylation and concomitant reactivation of the alpha subunit of the E1 component of the pyruvate dehydrogenase complex.[UniProtKB/Swiss-Prot Function]