

## Product datasheet for **MR230568**

### St7 (NM\_001289624) Mouse Tagged ORF Clone

#### Product data:

Product Type:	Expression Plasmids
Product Name:	St7 (NM_001289624) Mouse Tagged ORF Clone
Tag:	Myc-DDK
Symbol:	St7
Synonyms:	9430001H04Rik; Fam4a2; HELG; RAY1; SEN4; TSG7
Vector:	pCMV6-Entry (PS100001)
E. coli Selection:	Kanamycin (25 ug/mL)
Cell Selection:	Neomycin



[View online »](#)

**ORF Nucleotide Sequence:**

>MR230568 representing NM\_001289624  
 Red=Cloning site Blue=ORF Green=Tags(s)

TTTTGTAATACGACTCACTATAGGGCGGCCGGGAATTCGTCGACTGGATCCGGTACCGAGGAGATCTGCC  
 GCC**CGCATCGCC**

ATGGCCGAGGCGGGCGGGCTTCTGGAGCAGCTCAAGTCTGCATCGTGTGGTCTGGACCTATCTGT  
 GGACCGTGTGGTTCTTCTCGTCTCTTCTGGTCTACATCCTGAGGGTGCCCTGAGGATCAACGACAA  
 CCTGAGCACAGTGAAGTATTTTTGAACACGTTAACCCCAAAGTTCTACGTGGCCCTGACAGGCACTTCC  
 TCGCTAATATCGGGACTTATTTTGAATTTGAATGGTGGTATTTTCGCAAGTATGGAACATCTTTTCATTG  
 AACAAAGTCTCCGTAAAGCCACTTGCGCCCTTCTGGGAGGGGTTGACAACAACCTTTCCAATAATTCTAA  
 TTCCAGTAAATGGAGACTCAGATTCCAACAGACAAAGTGTCTCAGAATGCAAAGTATGGCGAAATCCACTG  
 AATCTGTTTAGGGGTGCGGAATAAATCGGTACACTTGGGTCACAGGACGAGAGCCTCTGACCTACTATG  
 ACATGAACCTCTCTGCCAGGACCACCAGACATTTTACTTGTGATTGAGATCATCTTCGCCCTGCAGA  
 TGCAATAATGCAAAAAGCTTGGAGAGAAAGGAACCTCAAGCCAGGATTTCTGCAGCTCATGAAGCCTTG  
 GAGATAAACGAAATTAGTCCAGAGTTGAAGTTCCTCAATTGCTTCTCTACCATCTGGGAGATAAAAT  
 TGTACCAAAGTGTGCAACTGCGTACATTTCTTGGCGGAAGAAGAAGCGACAACCTATTGCTGAAGCAGA  
 AAAACTCTTTAAGCAGGCCCTGAAGGCTGGAGATGGTTGTTACCGGCGCTCTCAGCAGCTACAACATCAT  
 GGGTCCCAGTATGAAGCTCAACACAGACGAGACACCAATGTCTTAGTCTATATCAAAAAGAAGGCTGGCGA  
 TGTGTGCCCGGAGACTTGAAGGACCAGAGAAGCAGTGAAGATGATGAGAGATTTAATGAAGGAGTTTCC  
 CCTCCTAAGCATGTTCAATATCCATGAGAACCTTCTAGAAGCTCTTCTGGAACCTCAAGCTTATGCTGAT  
 GTTCAGGCAGTCTTAGCAAAGTATGATGATATAAGCTTACCAAAGTCGGCGACAATATGCTACACAGCCG  
 CCTGCTCAAAGCAAGAGCTGTCTCTGACAAATCTCTCCAGAGGCTGCGTCTCGGAGGGGCTGAGCAC  
 AGCAGAGATGAATGCAGTAGAAGCCATCCACAGAGCTGTGGAATTAATCCACACGTGCCAAAATATCTA  
 CTAGAAATGAAAAGCTTAACTCTCCACCAAGAACACATCTGAAGAGAGGAGACAGTGAAGCGATAGCAT  
 ATGCATCTTTTCACTTGCACACTGGAAGAGGGTGAAGGGGCTTGAATCTCTTGCATTGTACGTGGGA  
 AGGCACCTTTCCGGATGATCCCGTATCCCTGGAGAAGGGACACCTATTTTATCCATACCAATCTGTACA  
 GAAACAGCTGACCGGGAGCTGCTTCCCTTTCCATGAAGTCTCAGTTTACCCAAAGAAGGAACTTCCCT  
 TCTTCATCTTCACTGCTGGACTGTGCTCCTTACAGCCATGCTGGCCCTCTGACACATCAGTTTCC  
 GGAACCTATGGGAGTCTTCGAAAAGCTTCTCAGCACTTTGTTTGGCCCTTGAACCTTGTATGGAG  
 AAAGTGGAAAGCATCCTCCCTCCAGTTTGTGGCATCAGCTGACACGGATC

**ACGCGT**ACGCGGCCGCTCGAGCAGAAACTCATCTCAGAAGAGGATCTGGCAGCAAATGATATCCTGGATT  
 ACAAGGATGACGACGATAAGGTTTAA

**Protein Sequence:**

>MR230568 representing NM\_001289624  
 Red=Cloning site Green=Tags(s)

MAEAGAGFLEQLKSCIVSWTYLWTVWFFLVFLVYILRVPLRINDNLSTVSMFLNLTTPKFYVALTGTS  
 SLISGLILIFEWYFRKYGTSFIEQVSVSHLRPLLGGVDNNSNNSNNGSDSNRQSVSECKVWRNPL  
 NLFRTAEYNRYTWTGREPLTYDMNLSAQDHQTFCTDSDHLRPADAIMQKAWRERNPQARISAAHEAL  
 EINEIRSRVEVPLIASSTIWEIKLLPKCATAYILLAEAEATTIAEAEKLFKQALKAGDGCYRRSQQLQHH  
 GSQYEAQHRRDNLVYIKRRLAMCARRLGRTRAVKMMRDLMKFPLLSMFNIHENLLEALLELQAYAD  
 VQAVLAKYDDISLPKSATICYTAALLKARAVSDKFSPEAASRRGLSTAEMNAVEAIHRAVEFNPHVPKYL  
 LEMKSLILPPEHILKRGDSEAIAYAFFHLAHWKRVEGALNLLHCTWEGTFRMIPYPLEKGHLYPYPICT  
 ETADRELLPSFHEVSVYPKELPFFILFTAGLCSFTAMLALLTHQFPELMGVFAKAFSTLFAPLNFVME  
 KVESILPSSLWHQLTRI

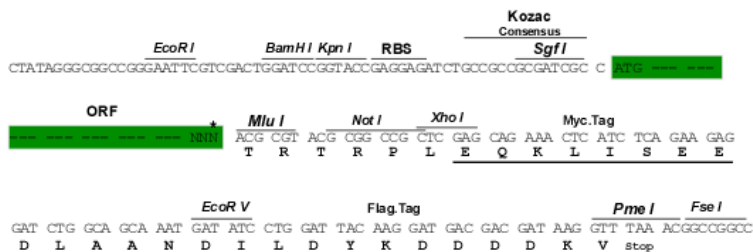
**TRTRPLEQKLI**SEEDLAANDILDYKDDDDKV

**Restriction Sites:**

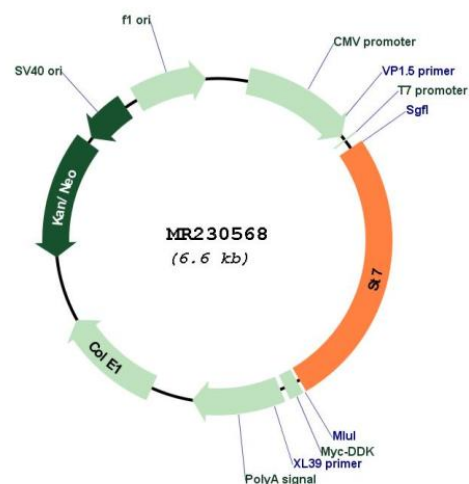
Sgfl-MluI

**Cloning Scheme:**

Cloning sites used for ORF Shutting:



\* The last codon before the Stop codon of the ORF

**Plasmid Map:**


ACCN: NM\_001289624

ORF Size: 1731 bp

<b>OTI Disclaimer:</b>	The molecular sequence of this clone aligns with the gene accession number as a point of reference only. However, individual transcript sequences of the same gene can differ through naturally occurring variations (e.g. polymorphisms), each with its own valid existence. This clone is substantially in agreement with the reference, but a complete review of all prevailing variants is recommended prior to use. <a href="#">More info</a>
<b>OTI Annotation:</b>	This clone was engineered to express the complete ORF with an expression tag. Expression varies depending on the nature of the gene.
<b>Components:</b>	The ORF clone is ion-exchange column purified and shipped in a 2D barcoded Matrix tube containing 10ug of transfection-ready, dried plasmid DNA (reconstitute with 100 ul of water).
<b>Reconstitution Method:</b>	<ol style="list-style-type: none"><li>1. Centrifuge at 5,000xg for 5min.</li><li>2. Carefully open the tube and add 100ul of sterile water to dissolve the DNA.</li><li>3. Close the tube and incubate for 10 minutes at room temperature.</li><li>4. Briefly vortex the tube and then do a quick spin (less than 5000xg) to concentrate the liquid at the bottom.</li><li>5. Store the suspended plasmid at -20°C. The DNA is stable for at least one year from date of shipping when stored at -20°C.</li></ol>
<b>RefSeq:</b>	<a href="#">NM_001289624.1</a> , <a href="#">NP_001276553.1</a>
<b>RefSeq Size:</b>	2210 bp
<b>RefSeq ORF:</b>	1734 bp
<b>Locus ID:</b>	64213
<b>UniProt ID:</b>	<a href="#">Q99M96</a>
<b>Cytogenetics:</b>	6 A2
<b>MW:</b>	66.5 kDa