

Product datasheet for **MR230549**

Carf (NM_001285463) Mouse Tagged ORF Clone

Product data:

Product Type:	Expression Plasmids
Product Name:	Carf (NM_001285463) Mouse Tagged ORF Clone
Tag:	Myc-DDK
Symbol:	Carf
Synonyms:	Als2cr8; ECBRC-FC1; ECBRC-FC2
Mammalian Cell Selection:	Neomycin
Vector:	pCMV6-Entry (PS100001)
E. coli Selection:	Kanamycin (25 ug/mL)



[View online »](#)

ORF Nucleotide Sequence:

>MR230549 representing NM_001285463
 Red=Cloning site Blue=ORF Green=Tags(s)

TTTTGTAATACGACTCACTATAGGGCGGCCGGGAATTCGTGACTGGATCCGGTACCGAGGAGATCTGCC
 GCC**CGGATCGCC**

ATGACCAATATCTCTGAAGAAAACCCACTGGTGAAGAGCAGATGTTCTCGAAGACAGCACCAGCAATT
 ACGGCCTTCGCTCACCAGCATCCCTCGTCTACCCAAAAAGGCAGGAGCCAGACTTGTTGAAGAACCTTT
 GCTGGCTCCTCTCCAGCCACTTTCTTGTAAACACACCCATGTGGCCTGCCGTCTTAGGAGTTGTGAGAAA
 ATTGGAGATTCCTACCGTGGCTACTGTGAAGTGAGACTGAATTAGAAAAGTGTCTAACTTTTACAAGC
 AGCAAACACAGACTGTCTGGGACTCGCCAGTCTCCAAGCCCAGCCAAACCTGCCACACGCTTGATGTG
 GAAGTCTCAGTATGTCCCATATGACGGAATCCATTTGTCAATGCAGGAAGTTCGAGCTGTGGTAATGGAG
 TGTGAGTATGGACCAAGGAGAAAAGTTTTTCAGTTAAAAAATCAGTGAGCAAGAAAGTAGGTCTGTGTC
 ATCTCTATAAAGCTACTGTCCAGCCAGGATATACATTAAGGTTACAGAAATTTCTGAATATAGAGT
 ACCTACAGACCCCAAAATTGACAGGAAGATAATCAGACTGGAGCAGGAGAAAGCCTTCACATATGCTGAAG
 AAGAACCTGATGGATGCTGGTGGTACTTCGATGGTATGTGCAGTTACCTACACAGCAAGCTCATCAGT
 ATCATGAATCAGAGACTCCTGGTGTCCCTTTGTACCCGTACCTTTTCTATGTCTCCTCTTGAAGAAGA
 GGAAGCTATAGTCAGAGATGAGAACTGTGCGTTGCCCTCTCGTCTCCACCCGCAAGTAGCGCATAAGATT
 CAGGAAGTAGTGTACAGGGAGTAGGACAAGTGTATGCAGTAAGGAAGCAGCTAAGAAAAATTTGTGGAAA
 GAGAACTGTTCAAACCTGATGAGATACCTGAAAGACATAATTTATCTTATTTTCAAAGTGAATGATAT
 AAAAAATCATATCCATGAGGTACAGAAATCCTTGAGGACTGGAGATGTGGTATATAACTCAGAGATTATT
 CCAGAACCGCTTCAGTGGACGACAGATAGTGGAAACATCCTCAGAGAGACTGTAACAGTTACATTTGCAG
 AAGGAAATTTACTAGGAGAACCATTCCAGCAAAATGGGAACAAGTCAGACACAGACTGCTGTGCTCC
 AGAGCCACTTTCTTCAATTTCCACCAAAAATATTTACACACTTTTCAGGCTTTGAAGTTACAGCCAAGACTC
 TCCTCTCTGATGGCTCACAAGCTTTGGTATCAGTAGATAGCCATGCATCCTCTAGTCTCCTGGCCTTG
 TGGATACTGTAGGAAATGCTGAAGTGGATAACCACTCTGTACTGCTTGGTCAGAGTCAAAACCTGGGAC
 AGATACATGCCTAACCAAGACAACAGCACCTCCTCCTCCACGGGCCACCTCCAGAATCAGTTCGGAAT
 CCAGTTGCAGAGGATCAGCTGCTGGAAGGTGAAGATGTTGAGGATGCAGGGAATCCGGAAGGAAGTGTA
 ATAGGACTCTGTTGGGAGATGTACAAACCGTTCCAATACAGATCATAGACAGCCGTCAGTCTGTTGA
 AGAAAGTCTGTCTAAGAACCAAGTTAAACAAGAAACCAATGAGCCAACACTGTCTACAGAAGCAAAAAC
 TTCTGGACTGTAAAAAATATCTGCTACA

ACGCGTACGCGGCCGCTCGAGCAGAAACTCATCTCAGAAGAGGATCTGGCAGCAAATGATATCCTGGATT
 ACAAGGATGACGACGATAAGGTTTAA

Protein Sequence:

>MR230549 representing NM_001285463
 Red=Cloning site Green=Tags(s)

MTNISEEKPTGVRADVLEDSTSNYGLRSPASLVLPKAGARLVEEPLLAPLQPLSCNTPMWACRLRSCEK
 IGDSYRGYCVSETELESVLTFFHKQQTQTVWGTQRQSPSPAKPATRLMWKSQYVYPYDGPVFNAGSRAVME
 CQYGPRRKGFQKKISEQESRSCHLYKATCPARIYIKKVQKFPYRVPTDPQIDRKIIRLEQEKAFTMLK
 KNLMDAGGVLRWYVQLPTQQAQHYHESETPGVPLSPSPFPMSPLLEEEAIVRDENCALPSRLHPQVAHKI
 QELVSQGVGVYAVRKQLRKFVERELFKPDEIPERHNL SYFPTVNDIKNHIHEVQKSLRTGDVVYNSEII
 PATLQWTTDSGNILRETVTVTFAEGNLLGEPISKMGTSQTQTAVSPEPLSSFPPKIFTHFQALKLQPRL
 SSPDGSQALVSVDSHASSPPGLVDTVGNAEVDNHSVLLGQSQNPQGTDTCLTQDNSTSSSTGHLPEVSN
 PVAEDQLLEGEDVEDAGNPEGSVNRLLGDVQTVPIQIIDSRLVVEESLSKNQVQKQETNEPTLSTEAKT
 FLDCKKISAT

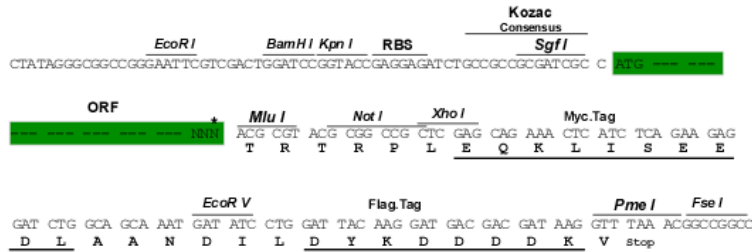
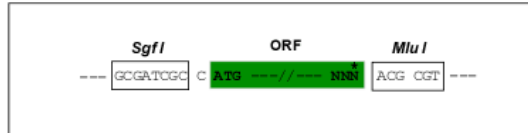
TRTRPLEQKLISEEDLAANDILDYKDDDDKV

Restriction Sites:

SgfI-MluI

Cloning Scheme:

Cloning sites used for ORF Shutting:



* The last codon before the Stop codon of the ORF

ACCN: NM_001285463

ORF Size: 1710 bp

OTI Disclaimer: The molecular sequence of this clone aligns with the gene accession number as a point of reference only. However, individual transcript sequences of the same gene can differ through naturally occurring variations (e.g. polymorphisms), each with its own valid existence. This clone is substantially in agreement with the reference, but a complete review of all prevailing variants is recommended prior to use. [More info](#)
OTI Annotation: This clone was engineered to express the complete ORF with an expression tag. Expression varies depending on the nature of the gene.

Components: The ORF clone is ion-exchange column purified and shipped in a 2D barcoded Matrix tube containing 10ug of transfection-ready, dried plasmid DNA (reconstitute with 100 ul of water).

Reconstitution Method:

1. Centrifuge at 5,000xg for 5min.
2. Carefully open the tube and add 100ul of sterile water to dissolve the DNA.
3. Close the tube and incubate for 10 minutes at room temperature.
4. Briefly vortex the tube and then do a quick spin (less than 5000xg) to concentrate the liquid at the bottom.
5. Store the suspended plasmid at -20°C. The DNA is stable for at least one year from date of shipping when stored at -20°C.

RefSeq: [NM_001285463.1](#), [NP_001272392.1](#)
RefSeq Size: 5701 bp

RefSeq ORF: 1713 bp

Locus ID: 241066

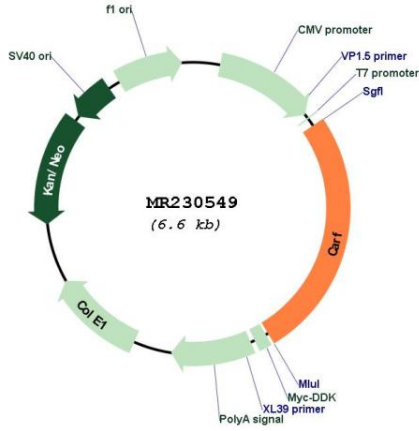
Cytogenetics: 1 C2

MW: 63.7 kDa

Gene Summary:

Acts as a transcriptional activator that mediates the calcium- and neuron-selective induction of BDNF exon III transcription. Binds to the consensus calcium-response element CaRE1 5'-CTATTCGAG-3' sequence (By similarity).[UniProtKB/Swiss-Prot Function]

Product images:



Circular map for MR230549