

Product datasheet for **MR230541**

Nrxn3 (NM_001252074) Mouse Tagged ORF Clone

Product data:

Product Type:	Expression Plasmids
Product Name:	Nrxn3 (NM_001252074) Mouse Tagged ORF Clone
Tag:	Myc-DDK
Symbol:	Nrxn3
Vector:	pCMV6-Entry (PS100001)
E. coli Selection:	Kanamycin (25 ug/mL)
Cell Selection:	Neomycin



[View online »](#)

ORF Nucleotide Sequence:

>MR230541 representing NM_001252074
 Red=Cloning site Blue=ORF Green=Tags(s)

TTTTGTAATACGACTCACTATAGGGCGGCCGGGAATTCGTCGACTGGATCCGGTACCGAGGAGATCTGCC
 GCC**CGGATCGCC**

ATGCACCTGAGAATCCACCCAAGACGGAGCCCTCCTCGCCGGCCGGCCTGGACGCTTGGGATCTGGTCCC
 TCTTCTGGGGATGTATCGTCAGCTCTGTGTGGAGTTCTTCTAATGTAGCCTCCTCCTCCTCCTCCTCCTC
 GGGATCTCACTCTCAGCAGGAACACCATTTCCACGGCAGCAAGCACCACTCTGTGCCTATTTCTATCTAT
 CGCTCCCTGTTTCCCTTCGAGGAGGGCAGCTGGTGAACATACATCTTTGGGAAAAGCGGTGGCCTCA
 TCCTCTATACCTGGCCAGCAAATGACAGACCCAGCACACGCTCTGACCGTCTCGCCGTGGGCTTCAGCAC
 TACTGTGAAGGATGGTATCTTAGTACGCATTGACAGCGCCCTGGACTTGGCGACTTCTCCAGCTTAC
 ATAGAACAAGGGAAAATGGAGTTGTCTCAATATTGGCACAGTTGACATCTCCATCAAAGAAGAGAGAA
 CTCTGTCAATGATGGCAAATACCAGTTGTGCGCTTCACCAGGAATGGGGAAAATGCTACACTTCAGGT
 GGACAACCTGGCCAGTGAATGAGCACTATCTACAGGCAACACTGATAATGAACGCCTCCAAATGGTAAAA
 CAGAAAATCCCTTCAAATATAACCGGCCCGTAGAGGAGTGGCTGCAGGAAAAAGCCGGCAGCTAACCA
 TCTTCAACACCCAGGCGCAAATAGCCATCGGAGGAAAGGACAAAGGACGTCTCTTCCAAGGTCAACTCTC
 TGGGCTCTATTATGATGGTTTAAAAGTACTGAACATGGCAGCTGAGAACAACCTAATATTTAAAATCAAT
 GGAAGTGTCCGGCTAGTGGGAGAAGTCCCATCAGTCTCAGGAACAACACAGACAACGTCCATGCCACCTG
 AAATGTCTACCACCGTATGAAACCACCACCACCATGGTACGACCACCACCCGAAAGAACCGCTCTAC
 AGCCAGCATTAGCCACGTCAGATGATCTTGTTCATCTGCTGAATGTTCAAGTATGATGAAGACTTT
 GTCGAATGTGAACCAAGTACAGGTAGGTCAAGACTTTCAGCTTCAATCTTGAAGTGGTACTACA
 AAGCACATGCGCCCAAGTGGGAATCCAAGGACTTACAGCTAACAAAGTCTCGAAACTAGTAGAAGTACA
 AACACCTCTTTGTCCCTGAGCTGATCCGCTTACAGCGTCTCCTCGTCTGGGATGGTCCCAAATTG
 CCAGCTGGCAAAATGAATAACCGTGATCTCAAACCCAGCCTGATATAGTCTTGCTTCCGTTGCCACTG
 CCTATGAGCTAGACAGCACCAAACCTGAAGAGCCCACTAATTACTTCCCCCATGTTCCGTAATGTGCCAC
 AGCAAACCCACGGAGCCAGGAATCAGACGGGTTCCGGGGCCTCAGAGGTGATCCGGGAGTCCAGCAGT
 ACAACAGGGATGGTCTGCGCATTTGTGGCTGCTGCCGCCCTCTGCATCTTGATCTCCTGTACGCCATGT
 ACAAGTACAGGAACAGGGACGAGGGTCTATCAAGTGGACGAGACGAGGAACTACATCAGCAACTCGGC
 CCAGAGCAACGGCAGCTCATGAAGGAGAAGCAAGCCAGCTCCAAGAGCGGCCATAAGAAACAGAAAAAC
 AAGGACAAGGAGTATTATGTG

ACGCGTACGCGGCCGCTCGAGCAGAAACTCATCTCAGAAGAGGATCTGGCAGCAAATGATATCCTGGATT
 ACAAGGATGACGACGATAAGGTTTAA

Protein Sequence:

>MR230541 representing NM_001252074
 Red=Cloning site Green=Tags(s)

MHLRIHPRRSPRRPAWTLGIWSLFWGCIWSSVWSSSNVASSSSSPGSHSQEHHFHGSKHHSVPISIY
 RSPVSLRGGHAGATYIFGKSGGLILYTPANDRPSTRSDRLAVGFSTTVKDGILVRIDSAPGLGDFLQLH
 IEQKGIGVVFNIGTVDISIKEERTPVNDGKYHVVRFRNNGNATLQVDNWPVNEHYPTGNTDNERLQMVK
 QKIPFKYNRPVEEWLQEKGRQLTIFNTQAQIAIGGKDKGRFLFQQLSGLYYDGLKVLNMAAENPNKIN
 GSVRLVGEVPSVSGTTQTSMPPMSTTVMETTTTMTATTTTRKNRSTASIQPTSDDLVSAAECSSDDEDF
 VECEPSTGRSDKSLSTSIFEGGYKAHAPKWEKDFRPNKVSETSRTTTTLSPELIRFTASSSSGMVPKL
 PAGKMNRDLKPQPDIVLLPLPTAYELDSTKLKSPITSPMFRNVPTANPTEPGIRRVPGASEVIRESSS
 TTGMVVGIVAAAALCILILLYAMYKYRNRDEGSYQVDETRNYISNSAQSNGLMKEKQASSKSGHKKQKN
 KDKEYV

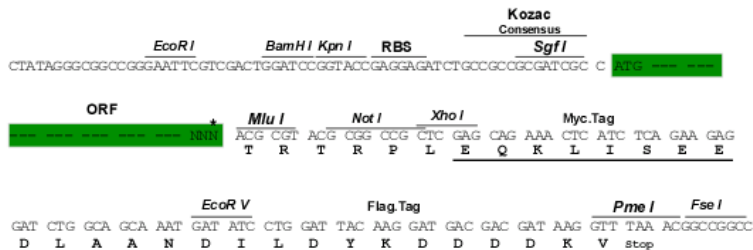
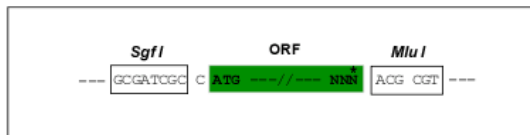
TRTRPLEQKLISEEDLAANDILDYKDDDDKV

Restriction Sites:

Sgfl-MluI

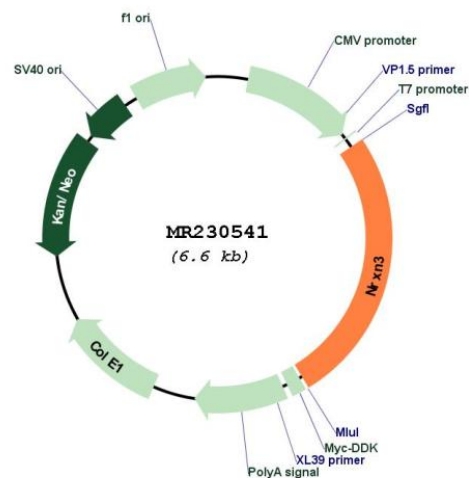
Cloning Scheme:

Cloning sites used for ORF Shuttling:



* The last codon before the Stop codon of the ORF

Plasmid Map:



ACCN:

NM_001252074

ORF Size:	1701 bp
OTI Disclaimer:	The molecular sequence of this clone aligns with the gene accession number as a point of reference only. However, individual transcript sequences of the same gene can differ through naturally occurring variations (e.g. polymorphisms), each with its own valid existence. This clone is substantially in agreement with the reference, but a complete review of all prevailing variants is recommended prior to use. More info
OTI Annotation:	This clone was engineered to express the complete ORF with an expression tag. Expression varies depending on the nature of the gene.
Components:	The ORF clone is ion-exchange column purified and shipped in a 2D barcoded Matrix tube containing 10ug of transfection-ready, dried plasmid DNA (reconstitute with 100 ul of water).
Reconstitution Method:	<ol style="list-style-type: none">1. Centrifuge at 5,000xg for 5min.2. Carefully open the tube and add 100ul of sterile water to dissolve the DNA.3. Close the tube and incubate for 10 minutes at room temperature.4. Briefly vortex the tube and then do a quick spin (less than 5000xg) to concentrate the liquid at the bottom.5. Store the suspended plasmid at -20°C. The DNA is stable for at least one year from date of shipping when stored at -20°C.
RefSeq:	NM_001252074.2 , NP_001239003.1
RefSeq Size:	5157 bp
RefSeq ORF:	1704 bp
Locus ID:	18191
UniProt ID:	Q8C985
Cytogenetics:	12 42.94 cM
MW:	62.8 kDa
Gene Summary:	This gene encodes a member of a family of proteins that function in the nervous system as receptors and cell adhesion molecules. Extensive alternative splicing and the use of alternative promoters results in multiple transcript variants for this gene, but the full-length nature of many of these variants has not been determined. Transcripts that initiate from an upstream promoter encode alpha isoforms, which contain epidermal growth factor-like (EGF-like) sequences and laminin G domains. Transcripts initiating from the downstream promoter encode beta isoforms, which lack EGF-like sequences. [provided by RefSeq, Dec 2012]