

Product datasheet for **MR230450**

Mzf1 (NM_001290452) Mouse Tagged ORF Clone

Product data:

Product Type:	Expression Plasmids
Product Name:	Mzf1 (NM_001290452) Mouse Tagged ORF Clone
Tag:	Myc-DDK
Symbol:	Mzf1
Synonyms:	Mzf-2; Mzf2; Zfp98; Zfp121; Znf42
Vector:	pCMV6-Entry (PS100001)
E. coli Selection:	Kanamycin (25 ug/mL)
Cell Selection:	Neomycin



[View online »](#)

ORF Nucleotide Sequence:

>MR230450 representing NM_001290452
 Red=Cloning site Blue=ORF Green=Tags(s)

TTTTGTAATACGACTCACTATAGGGCGGCCGGGAATTCGTCGACTGGATCCGGTACCGAGGAGATCTGCC
 GCC**GCGATCGCC**

ATGGAGCTCCTGGAATCTGGCCTCTTCTGCTGCTCAAGAGGCTGCAGCCACTCTCTACCTAAGGAGA
 CCCAGGGCCATGGGACAACACTGGACCAGACCTCTCTCATAGCGACTGAGCCTGATGTGCCCCATG
 GAGTGAGGACCTATGCCCTGTGGCATGAGGAAGTAGGGGCATCTTTTACCAGGGTTTACGCTGCAG
 ATGGACAGCATCACGGCAGAGCCAGATATGATGAGCCCCACCTCCATGTCCCCTGGGATCTGGACATGG
 CTAGCCTCTCTGGACAGATACAGTCCCCTACCACGGAAGGTGGCTTTGCCATGCCCTTGTACTCCCAG
 CGACCCAGGAGGTGAACAGGACCCTGCCTGCGAGGATCCCTGCCCAAGTGTGGGCCAGCATTGGTGGCG
 ACTCGATGGCATGCCCAAGGGCCGGAGCCAGAGCCACCCTCGCTCGGGGACTGGAGCCATGCGAGGGCG
 GCCGCTGCGACGTGTGTGGCAAGGTGTTAGCCAGCGAAGCAATCTGCTGCGGCACCAGAAGATCCACAC
 AGGCGAGAGACCGTTTCGTGTGTGGCAGTGTGGCCGAGCTTCAGCCGAGCTCTCACCTACTGCCCCAC
 CAGCTCACGCATACTAGGAACGGCCTTTCGTGTGCCGACTGTGGCCAGGGCTTCGTGCGCAGCGCCC
 GCCTGGAGGAGCACCGCGTGTACACACGGGCGAGCAGCCGTTCCGCTGCACAGAGTGTGGCCAGAGCTT
 TCGGCAGCGCTCCAACCTACTGCAGCACCAGCGCATCCACGGCGATCCGCTGGTCCAGCGCCATCCATC
 CTGCCCTCGCCGGAGTCCCAGGCCCCCGGGCCCTTCCATGCAGCGAGTGTGCGAGAGCTTCCCAC
 GACGCGCGTGTCTAGAGCACCAGGCGGTGCACACCGGGGACAAGTCTTCGGATGCGTGGAGTGCAG
 CGAGCGCTTCGGCCCGGTTTCGGTGTGTTGCAGCACCAGCGCGTGCACAGCGGCAACGGCCCTTCGCC
 TGTGCCGAGTGGCCAAAGCTTCGGCAGCGCTCTAATCTCACCCAGCACCAGCGCATCCACACTGGAG
 AGCGGCCCTTCGCCTGCGCCGAATGTGGCAAGACCTTCGGCAGCGGCCACGCTCACGCAGCAGCGCG
 TGTGCATACGGGTGAGAAGCCCTTCGCTGCGCCGAGTGCAGCGCCAGCGCTTCAGCCAGCGACTCAAGCTC
 ACGCGCCACAAAGGACCATACTGGCAGAAAGCCCTACTGCTGCGGTGAGTGCAGCGCTCGGCTTACAGC
 AGGTGTCTCGGCTCACCGAGCACCAGCGCATCCACACAGGTGAGCGGCCCTTCGCTGTCCCGAATGTGG
 CCAGAGTTTCCGGCAGCAGCCAACTCACCCAGCACCAGCGCATCCATACGGGCGAGCGACCCTACGCG
 TGTCCCGAATGTGGCAAGGCCTTTCGCCAGCGGCCACGCTCACGCAGCACCCTGCGCACTACCGGCACG
 AAAAGCCCTTCGCTGCCAGGACTGTGGCCGACGCTTCAACCAGAGCACCAGCTCATCCAGCACCAGCG
 TGTCACAGCACTGAG

AG**CGGACCG**ACGCGTACGCGCCGCTCGAGCAGAACTCATCTCAGAAGAGGATCTGGCAGCAAATGATATCC
 TGGATTACAAGGATGACGACGATAAGGTTTAA

Protein Sequence:

>MR230450 representing NM_001290452
 Red=Cloning site Green=Tags(s)

MELLESGLPAAQEAAATLLPKETQGHGTTLDQTSPhSDTEPDVPPWSEDPMPLWHEEVGGIFSPGFTLQ
 MDSITAEPDMMSPHLHVPWDLDMASLSGQIQSPTTEGGFAHALVLPSPDPGGEQDPACEDPCPSVGPALVA
 TRWHAPRGRSQSHPRSGTGAMRGGRCDVCGKVF SQRSNLLRHQKIHTGERPFVCGECGRSFSRSSHLLRH
 QLTHTTEERPFVCRDCGQGFVRSARLEEHRVHTGEQPFRCETCGQSFRQRSNLLQHQRHIGDPPGPAPSI
 LPLAGVPEPPGPFPCSECCESFPRRAVLLHQA VHTGDKSFGVCEGGERFGRSVLLQHRRVHSGERPFA
 CAECGQSFRQRSNLTQHQRHHTGERPFAEACGKTFRQRPTLTQHRLRVHTGEKPFACPECGQRF SQRLLK
 TRHQRHTHTEKPYCCGECGLGFTQVSRLTEHQRHHTGERPFAPECGQSFRQHANTQHRRHHTGERPYA
 CPECGKAFRQRPTLTQHRLRTHRHEKPFACQDCGRRFNQSTKLIQHQRVHSTE

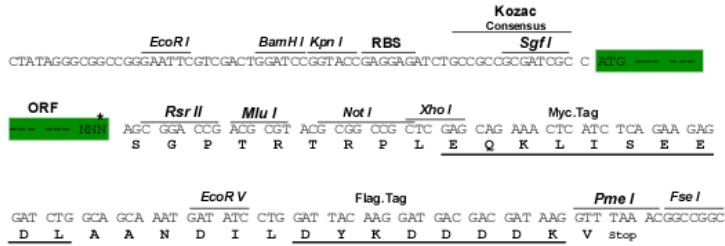
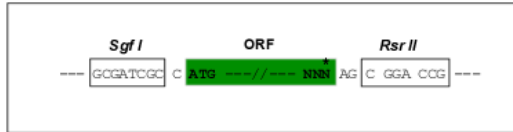
SGP**TRTRPLEQKLI**SEEDLAANDILDYKDDDDKV

Restriction Sites:

Sgfl-RsrII

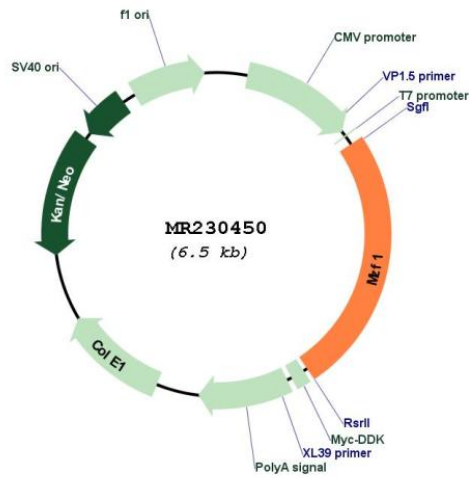
Cloning Scheme:

Cloning sites used for ORF Shuttling:



* The last codon before the Stop codon of the ORF

Plasmid Map:



ACCN:	NM_001290452
ORF Size:	1626 bp
OTI Disclaimer:	The molecular sequence of this clone aligns with the gene accession number as a point of reference only. However, individual transcript sequences of the same gene can differ through naturally occurring variations (e.g. polymorphisms), each with its own valid existence. This clone is substantially in agreement with the reference, but a complete review of all prevailing variants is recommended prior to use. More info
OTI Annotation:	This clone was engineered to express the complete ORF with an expression tag. Expression varies depending on the nature of the gene.
Components:	The ORF clone is ion-exchange column purified and shipped in a 2D barcoded Matrix tube containing 10ug of transfection-ready, dried plasmid DNA (reconstitute with 100 ul of water).
Reconstitution Method:	<ol style="list-style-type: none">1. Centrifuge at 5,000xg for 5min.2. Carefully open the tube and add 100ul of sterile water to dissolve the DNA.3. Close the tube and incubate for 10 minutes at room temperature.4. Briefly vortex the tube and then do a quick spin (less than 5000xg) to concentrate the liquid at the bottom.5. Store the suspended plasmid at -20°C. The DNA is stable for at least one year from date of shipping when stored at -20°C.
RefSeq:	NM_001290452.1 , NP_001277381.1
RefSeq Size:	3313 bp
RefSeq ORF:	1629 bp
Locus ID:	109889
Cytogenetics:	7 7.73 cM
MW:	61.2 kDa