

Product datasheet for **MR230429**

Patz1 (NM_001253690) Mouse Tagged ORF Clone

Product data:

Product Type:	Expression Plasmids
Product Name:	Patz1 (NM_001253690) Mouse Tagged ORF Clone
Tag:	Myc-DDK
Symbol:	Patz1
Synonyms:	8430401L15Rik; AI447519; Mazr; Patz; Zfp278
Vector:	pCMV6-Entry (PS100001)
E. coli Selection:	Kanamycin (25 ug/mL)
Cell Selection:	Neomycin



[View online »](#)

ORF Nucleotide Sequence:

>MR230429 representing NM_001253690
 Red=Cloning site Blue=ORF Green=Tags(s)

TTTTGTAATACGACTCACTATAGGGCGGCCGGGAATTCGTCGACTGGATCCGGTACCGAGGAGATCTGCC
 GCC**CGCATCGCC**

ATGGAGCGGGTCAACGACGCTTCTTGGCGTCCGTCGGGCTGCTACACCTACCAGGTGAGCAGACACAGTA
 CGGAGATGCTGCACAACCTGAACCAACAACGCAAAAACGGCGGGCGCTTTTGGCAGCTGCTCCTACGAGT
 AGGCGACGAGAGCTTCCAGCGCACCGCGCCGACTGGCTGCCTGCAGCGAGTACTTTGAGTCTGTGTTT
 AGCGCCAGTTAGGCGACGGCGGAGCTGCAGATGGTGGTCTGCTGATGTGGGAGCGCGCGCGGCTC
 CAGGCGCGGAGCTGGAGGCAGCCGGAAGTGGAGATGCACACCATCAGTTCCAAAGTGTTCGGAGACAT
 CCTGGACTTCGTTATACGTCCCGAATCGTTGTGCGCCTAGAGAGCTTCCCCGAGCTCATGACGGCCGCC
 AAGTTCCTGCTGATGAGGTGGTTCATCGAGATCTGCCAGGAAGTAAACAAACAGTCCAACGTGCAGATCC
 TCGTGGCCCTGCCGGGCTGATATCATGCTCTTTCGCCACCTGGGACTTCTGACTTGGGCTTCCCTTT
 GGACATGACCAACGGGGCAGCCATGGCAGCCAACAGTAACGGTATTGCTGGCAGTATGCAGCCCGAGGAG
 GAGGCTGCCAGGGCCACAGGTGCTGCTATTGCGGGCCAAGCTTCTCTGCCTGTGTTACCCGGGGTGGACA
 GATTGCCCATGGTGGCTGGACCCCTATCCCCCAACTACTGACTTCTCCGTTCCCTAATGTGGCATCCAG
 TGCACCTCCAATAACTAGCAAGCGAGGCCGGGGACGCCCCAGGAAGGCCAACCTGCTGGACTCCATGTTT
 GGGTCTCCAGGGGGCTTGGAGGAAGCAGGCATCCTTCCATGTGGCCTGTGCGGGAAGGTGTTCACTGACG
 CCAACCGGCTCCGGCAACATGAGGCCACGACGGCGTCAACAAGCTCCAGTTGGGCTATATCGATCTTCC
 TCCTCCAAGGCTGGGTGAGAATGGGTTACCCATCTCCGAGGACCCGATGGCCCCAGAAAAGGAGCCGG
 ACCAGGAAGCAAGTGGCTTGTGAGATCTGTGGCAAGATCTTTCGTGACGTATACCATCTCAACCGGCATA
 AGCTTTCCCACTCGGGGAGAAGCCGTAATCGTCCCGGTGTGTGGTCTGCGGTTCAAGAGAAAAGACCG
 AATGTCGTACCATGTGAGGTCCCATGATGGGTCAAGTGGGCAACCGTACATCTGCCAGAGCTGTGGGAAA
 GGTTTCTCCAGGCCAGATCACTTGAATGGACATATCAAGCAGGTGCACACTTCTGAGCGACCTCACAAAT
 GTCAGACCTGCAATGCCTCCTTTGCGACTCGAGACCGCCTGCGCTCCACCTGGCCTGTCATGAAGACAA
 GGTGCCCTGCCAGGTGTGTGGAAAGTACTTGGGGCCGCATACATGGCAGACCACCTGAAGAAGCACAGT
 GAGGGGCCAGCAACTTCTGTAGCATCTGTAACCGAGGTCTCCAGGCACCAGGAACCCATCTGAATGGG
 GGAGCAGCGTTCCTACTGCGCCAGGACCTATGGCAACAAAGAAGGCCAGAAATGCTCACATCAGGATCTGA
 T

ACGCGTACGCGGCCGCTCGAGCAGAAACTCATCTCAGAAGAGGATCTGGCAGCAAATGATATCCTGGATT
 ACAAGGATGACGACGATAAGGTTTAA

Protein Sequence:

>MR230429 representing NM_001253690
 Red=Cloning site Green=Tags(s)

MERVNDASCGPSGCTYQVSRHSTEMLHNLNQRKNGGRFCVLLRVGDESFPAPRAVLAACSEYFESVF
 SAQLGDGGAADGGPADVGGAAAAPGGGAGGSRELEMHTISSKVFQDILDFAYTSRIVVRLSEFPELMTAA
 KFLLMRSVIEICQEVIKQSNVQILVPPARADIMLFRPPGTSDLGFPLDMTNGAAMAANSNGIAGSMQPEE
 EAARATGAAIAGQASLPVLPVDRPLPMVAGPLSPQLLTPFPNVASSAPPLTSKRGRGRPRKANLLDSMF
 GSPGGLREAGILPCGLCGKVFTDANRLRQHEAQHGVTSLQLGYIDLPPPRLENGLPISEDPDGPGRKRSR
 TRKQVACEICGKIFRDVYHLNRHKLSHSKEKPYSCPVCGLRFKRKDRMSYHVRSHDGSVQKPYICQSCGK
 GFSRPDHLNGHIKQVHTSERPHKQTCNASFATRDLRSHLACHEDKVPQVCGKYLRAAYMADHLKKHS
 EGSPNFCNICNRGLQAPGTHPEWSSVPLRQDLWQRRPEMLTSGSD

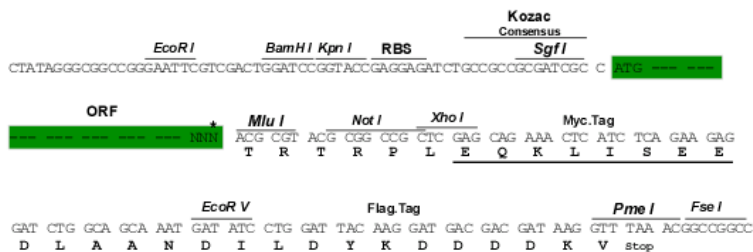
TRTRPLEQKLISEEDLAANDILDYKDDDDKV

Restriction Sites:

Sgfl-MluI

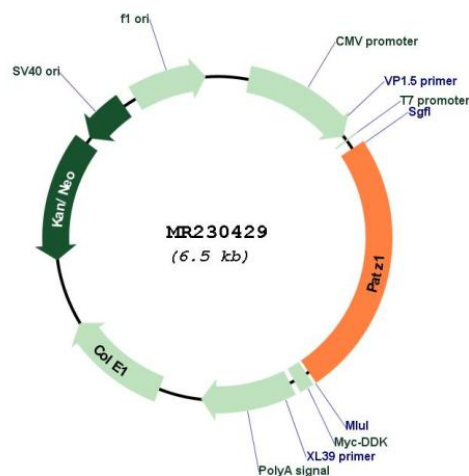
Cloning Scheme:

Cloning sites used for ORF Shuttling:



* The last codon before the Stop codon of the ORF

Plasmid Map:



ACCN:	NM_001253690
ORF Size:	1611 bp
OTI Disclaimer:	The molecular sequence of this clone aligns with the gene accession number as a point of reference only. However, individual transcript sequences of the same gene can differ through naturally occurring variations (e.g. polymorphisms), each with its own valid existence. This clone is substantially in agreement with the reference, but a complete review of all prevailing variants is recommended prior to use. More info
OTI Annotation:	This clone was engineered to express the complete ORF with an expression tag. Expression varies depending on the nature of the gene.
Components:	The ORF clone is ion-exchange column purified and shipped in a 2D barcoded Matrix tube containing 10ug of transfection-ready, dried plasmid DNA (reconstitute with 100 ul of water).
Reconstitution Method:	<ol style="list-style-type: none">1. Centrifuge at 5,000xg for 5min.2. Carefully open the tube and add 100ul of sterile water to dissolve the DNA.3. Close the tube and incubate for 10 minutes at room temperature.4. Briefly vortex the tube and then do a quick spin (less than 5000xg) to concentrate the liquid at the bottom.5. Store the suspended plasmid at -20°C. The DNA is stable for at least one year from date of shipping when stored at -20°C.
RefSeq:	NM_001253690.1 , NP_001240619.1
RefSeq Size:	3191 bp
RefSeq ORF:	1614 bp
Locus ID:	56218
Cytogenetics:	11 A1
MW:	58.6 kDa