

Product datasheet for **MR230408**

Pkm (NM_001253883) Mouse Tagged ORF Clone

Product data:

| | |
|--------------------|---|
| Product Type: | Expression Plasmids |
| Product Name: | Pkm (NM_001253883) Mouse Tagged ORF Clone |
| Tag: | Myc-DDK |
| Symbol: | Pkm |
| Synonyms: | AA414905; AL024370; AL024424; Pk-2; Pk-3; Pk3; Pkm2 |
| Vector: | pCMV6-Entry (PS100001) |
| E. coli Selection: | Kanamycin (25 ug/mL) |
| Cell Selection: | Neomycin |



[View online »](#)

ORF Nucleotide Sequence:

>MR230408 representing NM_001253883
 Red=Cloning site Blue=ORF Green=Tags(s)

TTTTGTAATACGACTCACTATAGGGCGGCCGGAATTCGTCGACTGGATCCGGTACCGAGGAGATCTGCC
 GCC**GCGATCGCC**

ATGCCGAAGCCACACAGTGAAGCAGGGACTGCCTTCATTAGACCCAGCAGCTCCATGCAGCCATGGCTG
 ACACCTTCCTGGAACACATGTGCCGCTGGACATTGACTCTGCCCCATCACGGCCGCAACACTGGCAT
 CATTGTACCATTGGCCTGCTTCCCGACTGTGGAGATGCTGAAGGAGATGATTAAGTCTGGAATGAAT
 GTGGCTCGGCTGAATTTCTCATGGAACCCATGAGTACCATGCAGAGACCATCAAGAATGTCCTGGAAG
 CCACAGAAAGCTTTGCATCTGATCCATTCTTACCGTCTGTTGCGGTGGCTCTGGATACAAAGGGACC
 TGAGATCCGGACTGGACTCATCAAGGGCAGCGCACCGCTGAGGTGGAGCTGAAGAAGGGAGCCACTCTG
 AAGATCACCTGGACAACGCTTACATGGAGAAGTGTGACGAGAACATCCTGTGGCTGGACTACAAGAACA
 TCTGCAAGGTGGTGGAGGTGGCAGCAAGATCTACGTGGACGATGGGCTCATCTACTGCAGGTGAAGGA
 GAAAGGCGCTGACTTCTGGTGCAGGAGTGGAGAATGGTGGCTCCTTGGCAGCAAGAAGGGCGTGAAC
 CTGCCGGGCGCTGCTGTGGATCTCCCGCTGTGTGCGAAAAGGACATCCAGGACCTGAAGTTGGGGTGG
 AGCAGGATGTGGACATGGTGTTCATCCGCAAGGCAGCCGACGTGCATGAAGTCAGGAAGGT
 GCTGGGAGAGAAGGGCAAGAACATCAAGATCATCAGAAAATCGAGAACCATGAAGGCGTCCGACAGTTT
 GATGAGATCTGGAGGCCAGTATGGGATCATGGTGGCTCGTGGTGCCTGGCATTGAGATTCCTGCAG
 AGAAGGTCTTCTGGCTCAGAAGATGATGATCGGGCGATGCAACCGAGCTGGGAAGCCTGTCATCTGTGC
 CACACAGATGCTGGAGAGCATGATCAAGAAGCCACGCCCCACCGTGTGAAGGCAGTATGTGGCCAAT
 GCAGTCTGGATGGAGCAGACTGCATCATGCTGTCTGGAGAAACAGCCAAGGGGGACTACCTCTGGAGG
 CTGTTCCGATGCAGCACCTGATAGCTCGGGAGGCTGAGGCATGTTCCACCGTCTGCTTTGAAGA
 GCTTGTGCGAGCCTCCAGTCACTCCACAGACCTCATGGAGGCCATGGCCATGGGCAGCGTGGAGGCTCT
 TATAAGTGTTTAGCAGCAGCTTTGATAGTTCTCACGGAGTCTGGCAGGAGTGTACCAAGTGGCCAGGT
 ACCGCCCTCGGGCTCCTATCATTGCCGTGACTCGAAATCCCAGACTGCTCGCCAGGCCATCTGTACCG
 TGGCATCTCCCTGTGCTGTGAAGGATGCCGTGCTGAATGCCTGGGCTGAGGATGTCGACCTTCGTGTA
 AACTTGGCCATGGATGTTGGCAAGGCCGAGGCTTCTTCAAGAAGGGAGATGTGGTCATTGTGCTGACCG
 GGTGGCGCCCTGGCTCTGGATTCACCAACACCATGCGTGTAGTGCCTGTACCT

ACGCGTACGCGGCCGCTCGAGCAGAACTCATCTCAGAAGAGGATCTGGCAGCAAATGATATCTGGATT
 ACAAGGATGACGACGATAAGGTTTAA

Protein Sequence:

>MR230408 representing NM_001253883
 Red=Cloning site Green=Tags(s)

MPKPHSEAGTAFIQQLHAAMADTFLEHMCRLDIDSAPITARNTGIICTIGPASRSVEMLKEMIKSGMN
 VARLNFSHGTHEYHAETIKNVREATESFASDPILYRPVAVALDTKGPEIRTGLIKSGTAEVELKKGATL
 KITLDNAYMEKCDENILWLDYKNICKVVEVGSKIYVDDGLISLQVKEKGADFLVTEVENGGSLGSKKGVN
 LPGAAVDLPAVSEKDIQDLKFGVEQDVMVFASFIRKAADVHEVRKVLGEKGNKIIISKIENHEGVRFF
 DEILEASDGMVARGDLGIEIPAQKVFVLAQKMMIGRCNRAGKPVICATQMLESMIKKPRPTRAEGSDVAN
 AVLDGADCIMLSGETAKGDYPLEAVRMQHLIAREAEAMFHRLLEELVRASSHSTDLEAMAMGSVEAS
 YKCLAAALIVL TESGRSAHQVARYRPRAPIIAVTRNPQATARQAHL YRGIFPVLCCKDAVLNAWAEDVDLRV
 NLAMDVGKARGFFKKGDVVIVL TGWRPGSGFTNTMRVVPVP

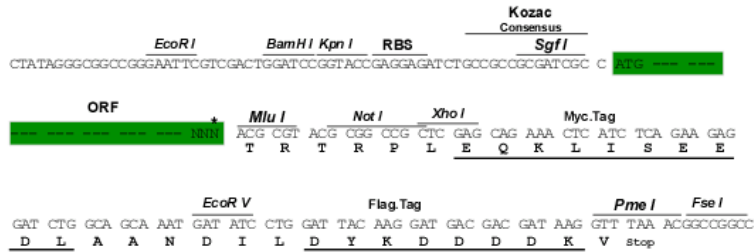
TRTRPLEQKLISEEDLAANDILDYKDDDDKV

Restriction Sites:

Sgfl-MluI

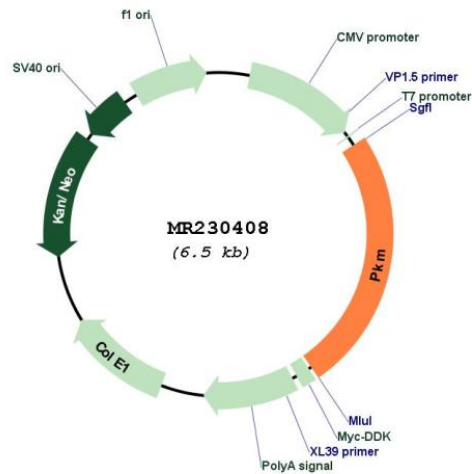
Cloning Scheme:

Cloning sites used for ORF Shuttling:



* The last codon before the Stop codon of the ORF

Plasmid Map:



| | |
|-------------------------------|---|
| ACCN: | NM_001253883 |
| ORF Size: | 1593 bp |
| OTI Disclaimer: | The molecular sequence of this clone aligns with the gene accession number as a point of reference only. However, individual transcript sequences of the same gene can differ through naturally occurring variations (e.g. polymorphisms), each with its own valid existence. This clone is substantially in agreement with the reference, but a complete review of all prevailing variants is recommended prior to use. More info |
| OTI Annotation: | This clone was engineered to express the complete ORF with an expression tag. Expression varies depending on the nature of the gene. |
| Components: | The ORF clone is ion-exchange column purified and shipped in a 2D barcoded Matrix tube containing 10ug of transfection-ready, dried plasmid DNA (reconstitute with 100 ul of water). |
| Reconstitution Method: | <ol style="list-style-type: none">1. Centrifuge at 5,000xg for 5min.2. Carefully open the tube and add 100ul of sterile water to dissolve the DNA.3. Close the tube and incubate for 10 minutes at room temperature.4. Briefly vortex the tube and then do a quick spin (less than 5000xg) to concentrate the liquid at the bottom.5. Store the suspended plasmid at -20°C. The DNA is stable for at least one year from date of shipping when stored at -20°C. |
| RefSeq: | NM_001253883.2 |
| RefSeq Size: | 2432 bp |
| RefSeq ORF: | 1596 bp |
| Locus ID: | 18746 |
| UniProt ID: | P52480 |
| Cytogenetics: | 9 32.03 cM |
| MW: | 58.4 kDa |
| Gene Summary: | Glycolytic enzyme that catalyzes the transfer of a phosphoryl group from phosphoenolpyruvate (PEP) to ADP, generating ATP (By similarity). Stimulates POU5F1-mediated transcriptional activation (By similarity). Promotes in a STAT1-dependent manner, the expression of the immune checkpoint protein CD274 in ARNTL/BMAL1-deficient macrophages (PubMed:29996098).[UniProtKB/Swiss-Prot Function] |