

## Product datasheet for **MR230384**

### Cdc7 (NM\_001271568) Mouse Tagged ORF Clone

#### Product data:

Product Type:	Expression Plasmids
Product Name:	Cdc7 (NM_001271568) Mouse Tagged ORF Clone
Tag:	Myc-DDK
Symbol:	Cdc7
Synonyms:	A1597260; Cdc7l1; muCdc7
Vector:	pCMV6-Entry (PS100001)
E. coli Selection:	Kanamycin (25 ug/mL)
Cell Selection:	Neomycin



[View online »](#)

**ORF Nucleotide Sequence:**

>MR230384 representing NM\_001271568  
 Red=Cloning site Blue=ORF Green=Tags(s)

TTTTGTAATACGACTCACTATAGGGCGGCCGGAATTCGTCGACTGGATCCGGTACCGAGGAGATCTGCC  
 GCC**GCGATCGCC**

ATGGAGGAGCCAATGGCGTTTTCTCCCTTCGTGGCAGTGACAGGTGCCGGCTGATGACTCTTTAAAAA  
 AATATGAGCAGAGTGTTAACTTTCAGGTATTAAGAGAGATATTGAGGAGCTTTGTGAAGCTGTACCACA  
 ACTAGTCAATGTGTTCAAATTAAGGACAAAATTGGAGAAGGCACCTTCAGCTCTGTTTATTGGCCACA  
 GCACAGTTGCAAGAAGGACATGAAGAGAAAATTGCGCTGAAACACTTAATCCCACAAGTCATCCTATGA  
 GGATTGCAGCAGAGCTTCAGTGTCTGACAGTTGCAGGGGGCAAGACAATGTCATGGGACTTAAGTACTG  
 CTTCAGAAAAATGATCATGTGGTTATTGCTATGCCGTATCTGGAACATGAGTCTTTTTGGACATTTTG  
 AATTCTCTTTCTCCAAGAAGTCGGGAATATATGTATAATCTTTTTGTAGCTTTGAAACGGATTATC  
 AGTTTGGTATTGTTACCGTGATGTGAAGCCAGCAATTTTTATACAATAGACGCTGAAAAAGTATGC  
 CTTGGTGGACTTCGGTTTGGCCAGGAAACCGTGACACAAAAATAGAGCTGCTCAAGTTTGTCCAGTCT  
 GAGGCTCAGCAGGAAGATTGTTACGAAACAAGTATCATGGAGTCGTTGGACACAAGGGCCTGCTGAGTC  
 GCCCGGCACCTAAAAGTGTGGATCAGCAGTGTACCCCAAAAACCTCTGTCAAAGATCTACACACAAGT  
 TCACATTAAGCAAGGAAAAGACGGAAAGCTCATCAAGCAATCAAAGACTGTGGACATAATATCACGAAAG  
 CTAGCGCAAAAAAGACGGCCATTTCTACAAAAGCTATGAACAGCGTGATGAGGGAAACTGCCAGGTCTT  
 GCCCTGCTGTCTCACCTGCGACTGCTATGGATCAGATAGAGTCTGCAGCGTTTGCCTGTCGAGGCGGCA  
 GCAGGTTGCCCTAGGGCAGGCACACCAGGATTCAGAGCGCCAGAGGTCCTGACAAAGTGTCTGACCAG  
 ACCACAGGTGTCATATTCCTGTCTTGTCTCAGTGGCGGTACCCATTTTACAAGGCCAGTGATGACTTAA  
 CTGCTTTGGCTCAGATCATGACAATTCGAGGATCCAGGAAACTATCCAGGCTGCTAAAGCTTTTGGCAA  
 ATCAGTTCTGTAGCAAAGAAGTCCCAGCACAAGACTTGAGAGCTCTCTGTGAGAGACTCGGGGTCTA  
 GACTCTACCCTCCAGGTCAGCCAGTGGTCTCCAGGGAATGCTTCTATGACCCTGCTGCTTCCAAGA  
 ACACTGACCACAAAGCATCCCGTGTACAGGCTGCTCAGGCACAGCACTCAGAGGACTCCTGTATAAAAAG  
 GGACAACGATGGCTATTGGAGTCATCCCAAAGACTGCACTTCCAACCTCAGAAGGCTGGGACTCAGTACCT  
 GATGAAGCCTATGACCTGCTCGACAAGCTTCTGGACCTAAACCCAGCTTCAAGGATAACAGCAGAAGCAG  
 CCTTATTACATGCGTTCTTTAAAGATATGTGCTCC

**ACGCGT**ACGCGGCCGCTCGAGCAGAAACTCATCTCAGAAGAGGATCTGGCAGCAAATGATATCTGGATT  
 ACAAGGATGACGACGATAAGGTTTAA

**Protein Sequence:**

>MR230384 representing NM\_001271568  
 Red=Cloning site Green=Tags(s)

MEEPMAFSSLRGS DRCPADDSLKKYEQSVKLSGIKRDIEELCEAVPQLVNVFKIKDKIGEGTFSSVYLAT  
 AQLQEGHEEKIALKHLIPTSHPMRIAELQCLTVAGGQDNVMGLKYCFRKNHVVAMPYLEHESFLDIL  
 NSLSFQEVREYMYNLFVALKRIHQFGIVHRDVKPSNFLYNRRLKKYALVDFGLAQGTRDTKIELLKQVQS  
 EAQQEDCSRNYHGVVGHKGLLSRPAPKTVDDQCTPKTSVKRSYTVVHIKQKDGKLIKQSKTVDIISRK  
 LATKTAISTKAMNSVMRETARSCPAVLTCDCYGS DRVCSVCLSRQVAPRAGTPGFRAPEVLTKCPDQ  
 TTGVIFLSLLSGRYPFYKASDDLTAALQIMTIRGSRETIQAAKAFGKSVLCSKEVPAQDLRALCERLRGL  
 DSTTPRSASGPPGNASYDPAASKNTDHKASRVQAAQAQHSSEDSL YKRDNDGYWSHPKDCSTNSEGWDSVP  
 DEAYDLLDKLLDLNPPASRITAEALLHAFFKDMCS

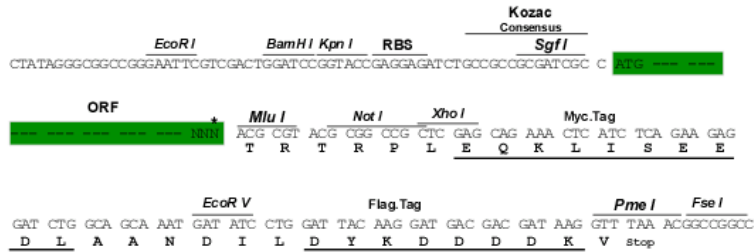
**TR**TRPLEQKLI SEEDLAANDILDYKDDDDKV

**Restriction Sites:**

SgfI-MluI

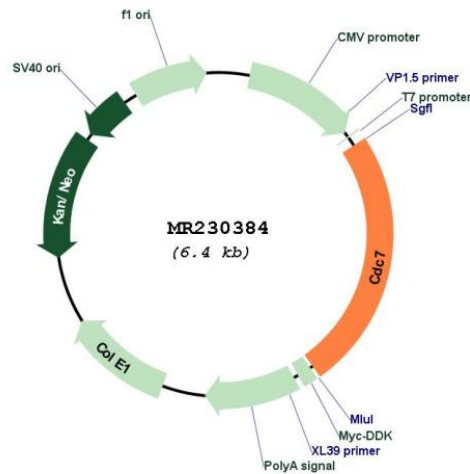
Cloning Scheme:

Cloning sites used for ORF Shuttling:



\* The last codon before the Stop codon of the ORF

Plasmid Map:



<b>ACCN:</b>	NM_001271568
<b>ORF Size:</b>	1575 bp
<b>OTI Disclaimer:</b>	The molecular sequence of this clone aligns with the gene accession number as a point of reference only. However, individual transcript sequences of the same gene can differ through naturally occurring variations (e.g. polymorphisms), each with its own valid existence. This clone is substantially in agreement with the reference, but a complete review of all prevailing variants is recommended prior to use. <a href="#">More info</a>
<b>OTI Annotation:</b>	This clone was engineered to express the complete ORF with an expression tag. Expression varies depending on the nature of the gene.
<b>Components:</b>	The ORF clone is ion-exchange column purified and shipped in a 2D barcoded Matrix tube containing 10ug of transfection-ready, dried plasmid DNA (reconstitute with 100 ul of water).
<b>Reconstitution Method:</b>	<ol style="list-style-type: none"><li>1. Centrifuge at 5,000xg for 5min.</li><li>2. Carefully open the tube and add 100ul of sterile water to dissolve the DNA.</li><li>3. Close the tube and incubate for 10 minutes at room temperature.</li><li>4. Briefly vortex the tube and then do a quick spin (less than 5000xg) to concentrate the liquid at the bottom.</li><li>5. Store the suspended plasmid at -20°C. The DNA is stable for at least one year from date of shipping when stored at -20°C.</li></ol>
<b>RefSeq:</b>	<a href="#">NM_001271568.1</a> , <a href="#">NP_001258497.1</a>
<b>RefSeq Size:</b>	2851 bp
<b>RefSeq ORF:</b>	1578 bp
<b>Locus ID:</b>	12545
<b>UniProt ID:</b>	<a href="#">Q9Z0H0</a>
<b>Cytogenetics:</b>	5 E5
<b>MW:</b>	58.9 kDa
<b>Gene Summary:</b>	Seems to phosphorylate critical substrates that regulate the G1/S phase transition and/or DNA replication. Can phosphorylates MCM2 and MCM3.[UniProtKB/Swiss-Prot Function]