

Product datasheet for **MR230332**

Btn2a2 (NM_001289615) Mouse Tagged ORF Clone

Product data:

Product Type:	Expression Plasmids
Product Name:	Btn2a2 (NM_001289615) Mouse Tagged ORF Clone
Tag:	Myc-DDK
Symbol:	Btn2a2
Synonyms:	Btn2; D030063K05
Vector:	pCMV6-Entry (PS100001)
E. coli Selection:	Kanamycin (25 ug/mL)
Cell Selection:	Neomycin



[View online »](#)

ORF Nucleotide Sequence:

>MR230332 representing NM_001289615
 Red=Cloning site Blue=ORF Green=Tags(s)

TTTTGTAATACGACTCACTATAGGGCGGCCGGAATTCGTCGACTGGATCCGGTACCGAGGAGATCTGCC
 GCC**GCGATCGCC**

ATGGAGCCTACAACCTCCCTGCGTTCTTGCCCGATAGCCTCCCTTCTTCTTCTTGGTCCCTCAGCCTGT
 TTGTGCTGGTCTCAGCCAGTTTACTGTATAGGACCAGCTGAGCCCATCCTGGCCATGGTAGGAGAGAA
 TACCACACTACACTGCCACCTGTACCAGAGAGAAATGCCGAAGAGATGGAGGTGCGGTGGTTCCGGTGG
 CGTTTCTCCCTGCAGTCTGGTGTACAGAGGCCATCAAGAGAGACCAGAGGAGCAGATGGTGGCATAACC
 GAGGAAGAACCACCTTCATGCGCACAGACATCAGCAAGGGAAGAGTTGCGCTCATTATCCACAATGTCAC
 AGCCTATGACAATGGCATCTACTGCTGTTACTTCCAGGAAGGCAGGTCTATGACCAGGCAACCATGAAG
 CTTATGGTGGCAAGCCTTGGCTCTGAGCCACTTATAAATGAAGACACTTGAGGATGGGAGCATCTTGC
 TAGAGTGCACATCTGAAGGTGGTACCCAGAGCCCGAGCTGTGTGGAGAGACCCTATGATGAAGTTGT
 ACCTGCCCTGGAGGAGGATATACAGCTGACAGAGAAGGCCTTTCACAGTCACCATGACTATAATCATC
 AGGGACTGCTCTGTGAGGAACATGACCTGCTGTCAATAACACTCTGCTCAGCCAGGAGGTGAAAGTG
 TGATTCTCATTCCAGAATCCTTCGTGCCAGCCTTCTCTGTGGATGGTGGCTGTGGCTGTCACTCTGCC
 TGTAGTAATGCTGATTCTCCTACATCTGGAAGCATCTGCCTTGTCAAGAAACACCGCAGGAAGAAATCT
 ATTCTGTCAGCTGAAAAAGAAGCCGAATATGAAGAGAAGGAAGCTGCACGGCAACTTCAAGAGGAAGTGC
 GATGGAGACGAACCCTTACATGCTGCTGACGTGGTCTTGACCCAGATACAGCTCATCCTGAGCTCTT
 CCTGTGATGACAGAGAAGTGAATACGAGGCTCTTCGAGGCAGAGTGTGCCTGACAACCTGAGAGA
 TTTGACTGCCGTCCATGTGTCTGGCCAGGAAAGCTTCTCCTCAGGGAAGCATTACTGGGAGGTGGAGG
 TGGAAAATGTAATGGTGTGGCCATTGGTGTGGTAGAGACAGCGTGGAAAGGAAAGGGGAGCCTGTT
 GGTTCTCAGAATGGCTTCTGGACCCTGGAGATGTTTGAAGCCAGTATCGAGCCCTGCTCCTCCAGAA
 AAGATCATACCTCTGAAAGAGCGTCTTACCCTATAGCTGTCTTCTGGACTGTGAGGTTGGAGATATTT
 CTTTCTACAACATGAGAGACAGATCACACATTTACACATGTCCTCCTGTGACTTTCACTGGGCCCTGAG
 ACCCTTCTTAGGCTTGGTTCTGATGACAGTCCCTGTTTCTGTCAGCATTACAGGGGCACAGGGA
 GTTACAATACCTGAGGGTGGCTTATTCCTATATAAGACAAGACCAATTTCTCAGAGCCTTGAAGGAAGC
 CA

ACGCGTACGCGGCCGCTCGAGCAGAACTCATCTCAGAAGAGGATCTGGCAGCAAATGATATCCTGGATT
 ACAAGGATGACGACGATAAGGTTTAA

Protein Sequence:

>MR230332 representing NM_001289615
 Red=Cloning site Green=Tags(s)

MEPTTSLRSCPIASLLFFLVLSLFLVLSAQFTVIGPAEPIILAMVGENTTLHCHLSPERNAEEMEVRWFRW
 RFFPAVLVYRGHQRPEEQMVAYRGRITFMRTDISKGRVALIIHNVTAYDNGIYCCYFQEGRSYDQATMK
 LMVASLGSEPLIKMKTLEDGSILLECTSEGWYPEPRAVWRDPYDEVVPALEEEYADREGLFTVTMTII
 RDCSVRNMTCVNNLTLTQEVESVILIPESFVPSLPLWMVAVAVTLPPVMLILLTSGSICLVKKHRRKKS
 ILSAEKEAEYEEKEAARQLQEELRWRRTLLHAADVLDPDTAHPELFLSDDQRSVIRGSSRSQSPDNPER
 FDCRCPVLGRESFSSGKHYWEVEVENVMVAIGVCRDSVERKGEALLVPQNGFWTLEMFGSQYRALSSPE
 KIIPLKERLHRIAVFLDCEGGDISFYNMRDRSHIYTCPVFTGPLRPFRLGSDSPLFICPAFTGAQG
 VTIPGGFLYKTRPISQSLVRKP

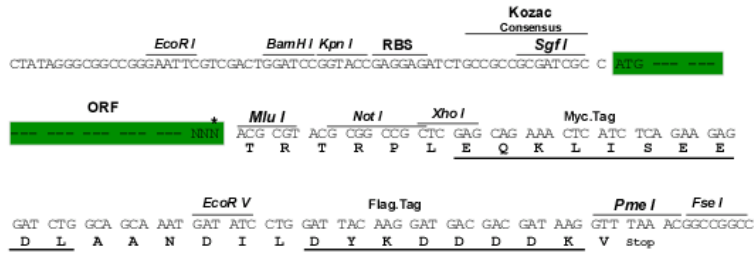
TRTRPLEQKLISEEDLAANDILDYKDDDDKV

Restriction Sites:

Sgfl-MluI

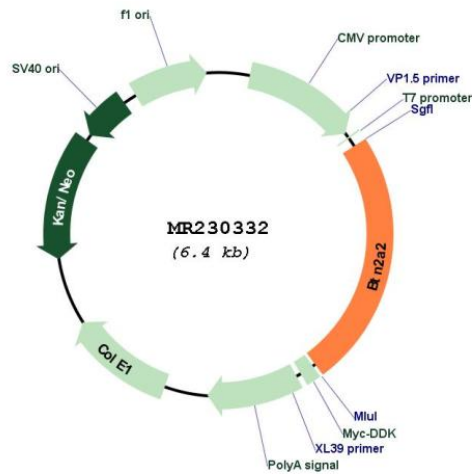
Cloning Scheme:

Cloning sites used for ORF Shutting:



* The last codon before the Stop codon of the ORF

Plasmid Map:



ACCN:	NM_001289615
ORF Size:	1542 bp
OTI Disclaimer:	The molecular sequence of this clone aligns with the gene accession number as a point of reference only. However, individual transcript sequences of the same gene can differ through naturally occurring variations (e.g. polymorphisms), each with its own valid existence. This clone is substantially in agreement with the reference, but a complete review of all prevailing variants is recommended prior to use. More info
OTI Annotation:	This clone was engineered to express the complete ORF with an expression tag. Expression varies depending on the nature of the gene.
Components:	The ORF clone is ion-exchange column purified and shipped in a 2D barcoded Matrix tube containing 10ug of transfection-ready, dried plasmid DNA (reconstitute with 100 ul of water).
Reconstitution Method:	<ol style="list-style-type: none">1. Centrifuge at 5,000xg for 5min.2. Carefully open the tube and add 100ul of sterile water to dissolve the DNA.3. Close the tube and incubate for 10 minutes at room temperature.4. Briefly vortex the tube and then do a quick spin (less than 5000xg) to concentrate the liquid at the bottom.5. Store the suspended plasmid at -20°C. The DNA is stable for at least one year from date of shipping when stored at -20°C.
RefSeq:	NM_001289615.1 , NP_001276544.1
RefSeq Size:	2924 bp
RefSeq ORF:	1545 bp
Locus ID:	238555
UniProt ID:	A4QPC6
Cytogenetics:	13 A3.1
MW:	58.9 kDa
Gene Summary:	Inhibits the proliferation of CD4 and CD8 T-cells activated by anti-CD3 antibodies, T-cell metabolism and IL2 and IFNG secretion.[UniProtKB/Swiss-Prot Function]