

Product datasheet for **MR230320**

Tcf12 (NM_001253864) Mouse Tagged ORF Clone

Product data:

Product Type:	Expression Plasmids
Product Name:	Tcf12 (NM_001253864) Mouse Tagged ORF Clone
Tag:	Myc-DDK
Symbol:	Tcf12
Synonyms:	A130037E08Rik; ALF1; bHLHb20; HEB; HEBAIt; HTF-4; HTF4; ME1; REB
Vector:	pCMV6-Entry (PS100001)
E. coli Selection:	Kanamycin (25 ug/mL)
Cell Selection:	Neomycin



[View online »](#)

ORF Nucleotide Sequence:

>MR230320 representing NM_001253864
 Red=Cloning site Blue=ORF Green=Tags(s)

TTTTGTAATACGACTCACTATAGGGCGGCCGGAATTCGTGACTGGATCCGGTACCGAGGAGATCTGCC
 GCC**CGCATCGCC**

ATGTACTGTGCTTATCCTGTCCCTGGAATGGGCAACAATTCTTTGATGTATTACTACAATGGGAAAACGG
 TATATGCACCATCCCAAATTCTGACGATTTCAACCGTGAATCTCCTAGTTACCCATCTCCAAGCCACC
 AACCAAGTATGTTTCGCTAGCACTTTCTTTATGCAAGATGGGACCCACAGTCTTCTGACCTTTGGAGTTCA
 TCGAATGGGATGAGCCAGCCTGGTTTTGGTGAATTCTGGGGACCTCCACATCCACATGTCTCAGTCCA
 GTAGTTATGGCAGCCTTCATTCACATGACCGCTTGAGTTATCCTCCACACTCAGTGTACCAACAGACAT
 AAACACAAGTCTCCGCAATGTCCAGCTTCCACCGTGGTAGTACCAGCAGCTCACCATATGTTGCCGCC
 TCACATACTCTCCCATCAATGGATCAGATAGCATCCTAGGAACCAGAGGGAATGCTGCTGGAAGCTCAC
 AGACGGGTGATGCACTTGGGAAGGCCTTGGCATCTATTTATCCCTGACCACACAAGCAGTAGTTTTCC
 ATCAAACCCATCAACACCAGTGGGATCTCCTTACCTCTCACAGTACCAGTCAAGTGGCCAGAGCTGGA
 GGCAAGCTCCTTCATCTCCAAGCTATGAAAACACTTCACTCCCTGCAGTCTCGAATGGAAGACCGCT
 TAGACAGGCTGGATGATGCTATCCATGTCTACGAAACCATGCAGTTGGACCTTCTACCAGTCTGCCTAC
 TAGCCACAGTGACATACACAGTTTGTGGGACCATCCCATAATGCATCAATTGGAACCTCAATCAAAC
 TATGGAGGATCCAGCCTTGTACAAATAGTCGATCAGCTTCGATGGTCCGGAACACATCGGGAAGATTCAG
 TCAGTCTCAATGGCAATCATTCCGTCTGTCTAGTACTGTTGCTCCAAACACAGAAGTGAACCATAA
 AACACCAGAAAATTTAGAGGTGGTGTACAAAATCAGTCTGGAAGTGTGTTCCAACAGAAAATCAAGACT
 GAAAACAAAAGAAAAGATGAAAACCTTCATGAACCTCCTTCATCAGATGACATGAAATCAGATGATGAT
 CCTCCCAGAAAAGACATCAAGGTCTCATCTAGGGCAGAAAAGCAGTACCAATGAAGACGAGGATCTGAA
 TCCAGAACAAGAAAATCGAAAGGGAGAAGGAAAGGCGGATGGCTAACAAATGCCAGAGAGCGCTGCGCGTG
 CGGGATATTAACGAGGCGTTCAAGGAGCTTGGCCGAATGTGTGAGCTTCATTTGAAGAGTAAAAACCTC
 AGACAAAACCTTCTCATTCTTCATCAGGCCGTGGCAGTCACTTCTAGTCTAGAACAGCAAGTGAAGAGAG
 GAACCTCAACCCCAAAGCAGCCTGCCTAAGAGAAGAGAAGAAGAAAAGTCTCTGCTGCGTCAGCAGAG
 CCGCCCAACACGTTGCCAGGAGCCCATCTGGGCTTAGTGAGTCTACCAACCTATGGGTCACTG

ACGCGTACGCGGCCGCTCGAGCAGAAAAC**T**CATCTCAGAAAGAGGATCTGGCAGCAAATGATATCTGGATT
 ACAAGGATGACGACGATAAGGTTTAA

Protein Sequence:

>MR230320 representing NM_001253864
 Red=Cloning site Green=Tags(s)

MYCAYVPVGMGNNSLMYYYNGKTVYAPSPNSDDFNRESYSPSPKPTSMFASTFFMQDGHSSSDLWSS
 SNGMSQPGFGGILGTSTSHMSQSSSYGSLHSHDRLSYPPHSVSPDINTSLPPMSSFHRGSTSSSPYVAA
 SHTPPINGSDSILGTRGNAAGSSQTGDALGKALASIYSPDHTSSSFSPNPSTPVGSPSPLTGTSQWPRAG
 GQAPSSPSYENSLHSLQSRMEDRLDRLDDAIHVLNRNHAVGPSTSLPTSHSDIHSLLGPSHNASIGNLNSN
 YGGSSLVTNSRSASVMGTHREDSVSLNGNHSVLSTVAASNTELNHKTPENFRGGVQNSGVSVPTEIKT
 ENKEKDENLHEPPSSDDMKSDDESSQKDIKVSRRGRTSSTNEDEDLNPEQKIEREKERRMANNARERLRV
 RDINEAFKELGRMCQLHLKSEKPTKLLILHQAVAVILSLEQQVRENRNLNPKAACLRREEEKVSAASAE
 PPNTLPGAHPGLSESTNPMGHL

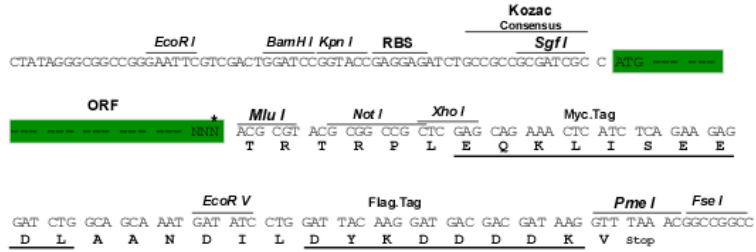
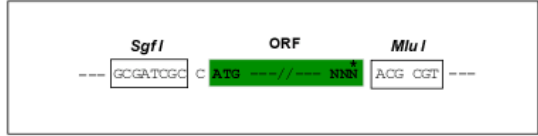
TRTRPLE**QKLISEEDLAANDILDYKDDDDK**V

Restriction Sites:

SgfI-MluI

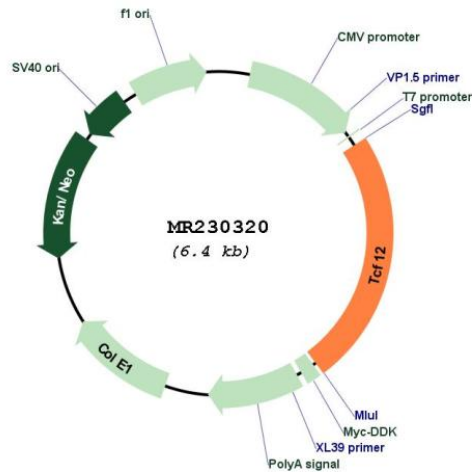
Cloning Scheme:

Cloning sites used for ORF Shuttling:



* The last codon before the Stop codon of the ORF

Plasmid Map:



ACCN: NM_001253864

ORF Size: 1536 bp

OTI Disclaimer: The molecular sequence of this clone aligns with the gene accession number as a point of reference only. However, individual transcript sequences of the same gene can differ through naturally occurring variations (e.g. polymorphisms), each with its own valid existence. This clone is substantially in agreement with the reference, but a complete review of all prevailing variants is recommended prior to use. [More info](#)

OTI Annotation: This clone was engineered to express the complete ORF with an expression tag. Expression varies depending on the nature of the gene.

Components: The ORF clone is ion-exchange column purified and shipped in a 2D barcoded Matrix tube containing 10ug of transfection-ready, dried plasmid DNA (reconstitute with 100 ul of water).

Reconstitution Method:

1. Centrifuge at 5,000xg for 5min.
2. Carefully open the tube and add 100ul of sterile water to dissolve the DNA.
3. Close the tube and incubate for 10 minutes at room temperature.
4. Briefly vortex the tube and then do a quick spin (less than 5000xg) to concentrate the liquid at the bottom.
5. Store the suspended plasmid at -20°C. The DNA is stable for at least one year from date of shipping when stored at -20°C.

RefSeq: [NM_001253864.1](#), [NP_001240793.1](#)

RefSeq Size: 3957 bp

RefSeq ORF: 1539 bp

Locus ID: 21406

Cytogenetics: 9 39.85 cM

MW: 55.5 kDa

Gene Summary: Transcriptional regulator. Involved in the initiation of neuronal differentiation. Activates transcription by binding to the E box (5'-CANNTG-3').[UniProtKB/Swiss-Prot Function]