

Product datasheet for **MR230264**

Zbtb34 (NM_001276332) Mouse Tagged ORF Clone

Product data:

Product Type:	Expression Plasmids
Product Name:	Zbtb34 (NM_001276332) Mouse Tagged ORF Clone
Tag:	Myc-DDK
Symbol:	Zbtb34
Synonyms:	Gm349; mKIAA1993
Mammalian Cell Selection:	Neomycin
Vector:	pCMV6-Entry (PS100001)
E. coli Selection:	Kanamycin (25 ug/mL)



[View online »](#)

ORF Nucleotide Sequence:

>MR230264 representing NM_001276332
 Red=Cloning site Blue=ORF Green=Tags(s)

TTTTGTAATACGACTCACTATAGGGCGGCCGGAATTCGTCGACTGGATCCGGTACCGAGGAGATCTGCC
 GCC**CGGATCGCC**

ATGGACAACAGCAGTTTCATTCACTTTGATGTGCCTGAGCACAGCAGCACGGTTCTGAGCCAACTAAATG
 AGCTCCGCCTGCAAGGGAAGCTATGTGACATCATCGTCCACATTCAGGGTCAGCCCTCCGAGCCACAA
 AGCCGTCCTCGCAGCCAGCTCCCGTATTTCCGGGACCATTTCAGCACTGAGCACTATGAGTGGCTTGTCG
 ATCTCTGTGATTAAGAACCCAGCGTGTGGAGCAGTTGCTCTCCTTCTGTTACACTGGAAGGATGTCCT
 TGCAGCTGAAGGATGTTGTCACTTTTCTGACCGCAGCCAGCTTTCTTCAGATGCAGTGTTCATTGACAA
 GTGCACACAGATCCTAGAGAGCATCCACTCGAAGATCAGCGTGGGAGACGTTGACTCTGTTACCATTGGT
 GCTGAAGAGAATCCTGAGAGCCGAAATGGGGTAAAGATGGCAGCTTCTCACCAATCCTGTTGAAATCT
 CCCCTCCGTAAGTCCCTCAGGTACGGCAGCCTCCAGTCAGCAGTGTCTCGGATGGAGACAACCCCA
 CAAAGCCCTTCGGAGCCGTTGCAGGAAGAGGGGCACTCAGATCGGGGAGCAGTGGGAGCGTGTCTGAG
 TATGAGATTAGATAGAAGGGGACCACGAGCAAGGGGACTTGTGGTGGAGAGAGCCAGATCACTGAGG
 TGAAAGTGAAGATGGAGAAGTCTGACCGGCCAGCTGCTCCGACAGCTCTCCCTGGGTGATGACGGCTA
 CCACACGGAGATGGTTGATGGGGAACAAGTTGTGGCCGTGAATGTGGGCGCTATGGCTCTGTGCTCCAG
 CATGCATACCCCTACTCCAGACGGCTTCACAGCCTTCCAGTGTGCCAGAAGCTTTGGAGGTGACAGCA
 ATTCCAGTCCATCCAGGTCCATGCTGAGCTGCTCCGAGGCCGTGGGGCCCGCAGAAGCGAGCTGTGC
 TGTTACCTGCACAGTACCTGCAGGGTGTGGTGCAGGGGTCTGACAGTGAAGCCATGATGAACAATCCC
 GGTTATGAGAGCAGTCCCGGGAGAGGAGCGCCAGGGGTATTGGTACCCATAACAACGAGAGGTTGATCT
 GTATTTACTGTGGGAAGTCTTTAACAGAAAGGAAAGCCTGACAGGCACATGCGGCTGCATATGGGAT
 CACCCCTTTGTGTGCAAGTTCGTGGGAAGAAGTACACGCGCAAGGACCAGCTGGAGTATCACATCCGG
 GGCCACACTGATGACAAACCATTCCGATGCGAGGTCTGTGGGAAGTCTTTCCATTCCAGGGTACCTCA
 ACCAGCACCTGCGGAAAAACCACCCGGGGTACCAGGAGGAGGGTTCGCATGGAGTCCCCGAAAGAAC
 AGACATGTATGTGAACAGAACTCGAAAGTGTGCATCAGCCTCAGAGATGGCACTAGATTCGCGCTG
 GAAATGCACACAGTGTCTGATGCGCCTGAC

ACGCGTACGCGGCCGCTCGAGCAGAACTCATCTCAGAAGAGGATCTGGCAGCAAATGATATCCTGGATT
 ACAAGGATGACGACGATAAGGTTTAA

Protein Sequence:

>MR230264 representing NM_001276332
 Red=Cloning site Green=Tags(s)

MDNSSFIQFDVPEHSSTVLSQLNELRLQKLCDIIVHIQGPFRRAHKAVLAASSPYFRDHSALSTMSGLS
 ISVIKNPSVFEQLLSFCYTGMSLQLKDVVSFLTAASFLLQMCVIDKCTQILESIIHSKISVGDVDSVTIG
 AEENPESRNGVKDGSFFTNPVEISPPYCPQVRQPPVSSDLRMETTPNKALRSRLQEEGHSRSGSSGSVSE
 YEIQIEGDHEQGDLLVRESQITEVKVMEKSDRPSGSDSSSLGDDGYHTEMVDGEQVAVNVGAYGSLVQ
 HAYPYSQTASQPSSVPEAFGGQTNSSPSRSMSCFRGRGARQKRALSVHLHSDLQGVVQSDSEAMMNP
 GYESSPRERSARGYWPYNERLICIYCGKSFNQKGLDRHMLHMGITPFVCKFCGKKYTRKDQLEYHIR
 GHTDDKPFRCVCGKCFPFQGTNLNQHRLRKNHPGVTEGRGRMESPRTDMYVEQKLESDASASEMALDSRL
 EMHTVSDAPD

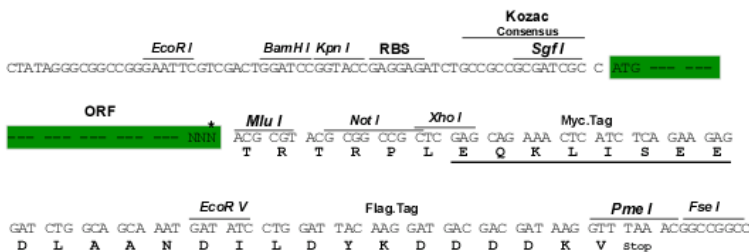
TRTRPLEQKLISEEDLAANDILDYKDDDDKV

Restriction Sites:

Sgfl-MluI

Cloning Scheme:

Cloning sites used for ORF Shutting:



* The last codon before the Stop codon of the ORF

ACCN: NM_001276332

ORF Size: 1500 bp

OTI Disclaimer: The molecular sequence of this clone aligns with the gene accession number as a point of reference only. However, individual transcript sequences of the same gene can differ through naturally occurring variations (e.g. polymorphisms), each with its own valid existence. This clone is substantially in agreement with the reference, but a complete review of all prevailing variants is recommended prior to use. [More info](#)

OTI Annotation: This clone was engineered to express the complete ORF with an expression tag. Expression varies depending on the nature of the gene.

Components: The ORF clone is ion-exchange column purified and shipped in a 2D barcoded Matrix tube containing 10ug of transfection-ready, dried plasmid DNA (reconstitute with 100 ul of water).

Reconstitution Method:

1. Centrifuge at 5,000xg for 5min.
2. Carefully open the tube and add 100ul of sterile water to dissolve the DNA.
3. Close the tube and incubate for 10 minutes at room temperature.
4. Briefly vortex the tube and then do a quick spin (less than 5000xg) to concentrate the liquid at the bottom.
5. Store the suspended plasmid at -20°C. The DNA is stable for at least one year from date of shipping when stored at -20°C.

RefSeq: [NM_001276332.1](#), [NP_001263261.1](#)
RefSeq Size: 6482 bp

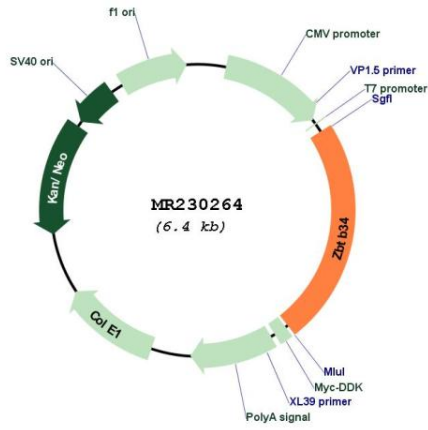
RefSeq ORF: 1503 bp

Locus ID: 241311

Cytogenetics: 2 B

MW: 56.1 kDa

Product images:



Circular map for MR230264