

Product datasheet for **MR230197**

Gpcpd1 (NM_001291050) Mouse Tagged ORF Clone

Product data:

Product Type:	Expression Plasmids
Product Name:	Gpcpd1 (NM_001291050) Mouse Tagged ORF Clone
Tag:	Myc-DDK
Symbol:	Gpcpd1
Synonyms:	2310004G06Rik; 2310032D16Rik; AU015213; Gde5; mKIAA1434; Prei4
Vector:	pCMV6-Entry (PS100001)
E. coli Selection:	Kanamycin (25 ug/mL)
Cell Selection:	Neomycin



[View online »](#)

ORF Nucleotide Sequence:

>MR230197 representing NM_001291050
 Red=Cloning site Blue=ORF Green=Tags(s)

TTTTGTAATACGACTCACTATAGGGCGGCCGGAATTCGTCGACTGGATCCGGTACCGAGGAGATCTGCC
 GCC**CGCATCGCC**

ATG**TCCAACAGCCTGGAGATATCCTTAATAAGTGACAATGAGTTCAAGTGCAGGCACTCACAGCCAGAAT**
GTGGGTATGGCTTACAGCCCGATCGTTGGACAGAGTACAGCATACAGACAATGGAACCAGATAATCTGGA
GCTCATCTTTGACTTTTTTGGAGGAAGATCTCAGTGAGCATGTAGTTCAGGGTGATGTTCTTCTGGACAC
GTGGGCACAGCATGCCTCTGTCTTCTACCATTGCTGAGAGTGGAAAGAAGCGCTGGAATCCTTACTCTTC
CCATCATGAGCAGAAATCCAGAAAAATAGGCAAAGTCAAGAGTTGATTTTATCATCATCAAGCCATT
ACCTGGATATAGTTGTTCTATGCAGTCTTCATTTTCCAAGTATTGGAAACCAAGAATACCATTGGACGT
GGACATCGTGGTGCAGGAACTCAACAACGACTGCCAAGCTAGCTAAAGTACAGGAAAATACTATCGCTT
CTTTAAGAAATGCTGCCAGTCATGGCGCAGCATTGTAGAAATTTGATGTCCACCTTCAAAGGACTTTGT
GCCCGTGGTGTATCATGACCTCACCTGCTGTCTGACCATGAAGAGGAAAATGAAGCTGATCCAGTTGAA
TTGTTTGAATCCAGTAAAAGAATTAACATTTGACCAACTCCAGTTATTGAAGCTTCTCATGTGACTG
CATTA AAAACCAAGACCGGAAACAATCTTTGTATGAGGAGGAAAATTTCTTTCTGAAAATCAGCCATT
TCCTTCTCTTAAGATGGTTTTAGAAATCATTGCCAGAAAATGATAGGATTTAATATAGAAAATAAAATGGATT
TGCCAACACAGGGATGGAGTATGGGATGGCAACTTATCAACATATTTTGTATGAATGTGTTTTGGATA
TAATTTTAAAACTGTTTTAGAAAATCTGGGAAGAGGAGAATAGTGTCTTCTTTTGTATGCAGATAT
TTGTACAATGGTTCGGCAGAAGCAGAACAAATATCCCATATTTTGTATGAATGTGTTTTGGATA
TACCCGAACCTCATGGACCTCAGATCTCGGACAACACCCATTGCAATGAGTTTTGCACAGTTTAAAATA
TTTTGGGATAAATGCCATACTGAAGACCTCCTTAGAAAACCCATCCTATGTCCAAGAGGCAAAAAGCTAA
GGGATTGGTCATATTCTGCTGGGGTATGATACCAACGATCCTGAAAACAGAAGGAAACTGAAGGAATTT
GGAGTAAATGGTCTAATATATGATAGGATATGATTGGATGCCTGAACAGCCAAATATATTCCAAGTGG
AGCAGTTGGAGCGCTGAAGCAAGAATTGCCAGAGCTTAAGAAGTGTGTGCCACTGTAGCCACTT
CATCCCTTCTTCTTTCTGTGTGGAGCCTGATATCCACGTGGATGCCAACGGCATTGATAGTGTGGAGAAC
GCT

ACGCGTACGCGGCCGCTCGAGCAGAAACTCATCTCAGAAGAGGATCTGGCAGCAAATGATATCCTGGATT
ACAAGGATGACGACGATAAGGTTTAA

Protein Sequence:

>MR230197 representing NM_001291050
 Red=Cloning site Green=Tags(s)

MSNSLEISLISDNEFKCRHSQPECGYGLQPDRWTEYSIQTMEDNLELIFDFFEEEDLSEHVVGQDVLPGH
 VGTACLLSSTIAESGRSAGILTLPIMSRNSRKTIGKVRVDFIIKPLPGYSCSMQSSFSKYWKPRIPLDV
 GHRGAGNSTTTAKLAKVQENTIASLRNAASHGAAFVEFDVHLSKDFVPVYHDLTCLTMKRKYEADPVE
 LFEIPVKELTFDQLQLLKLSHVTALKTKDRKQSLYEEENFFSENQPFPSLKMVLESLPENVGFNIEIKWI
 CQHRDGVWDGNLSTYFDMNVFLDIILKTVLENSGKRRIVFSFDADICTMVRQKQNKYPILFLTQGKSDI
 YPELMDLRSRTPIAMSFQFENILGINAHTEDLLRNPSYVQEAkakGLVIFCWGDDTNDPENRRKLKEF
 GVNGLIYDRIYDWMPQPNIFQVEQLERLQELPELKNCLCPTVSHFIPSSFCVPEPIHVDANGIDSVEN
 A

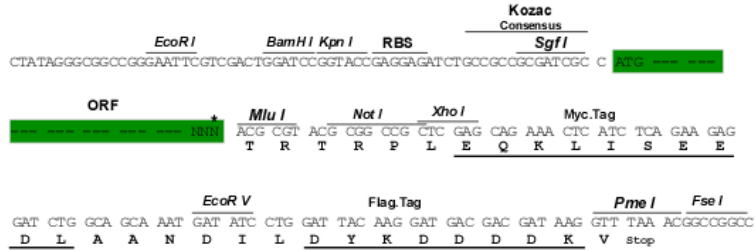
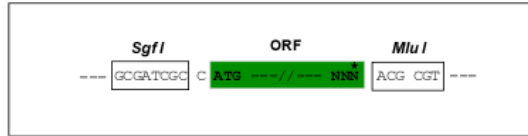
TRTRPLEQKLISEEDLAANDILDYKDDDDKV

Restriction Sites:

SgfI-MluI

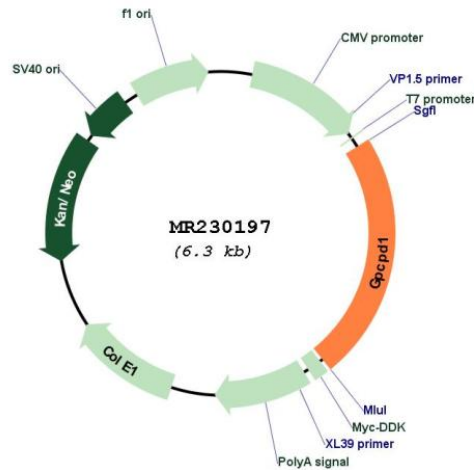
Cloning Scheme:

Cloning sites used for ORF Shutting:



* The last codon before the Stop codon of the ORF

Plasmid Map:



ACCN: NM_001291050

ORF Size: 1473 bp

OTI Disclaimer: The molecular sequence of this clone aligns with the gene accession number as a point of reference only. However, individual transcript sequences of the same gene can differ through naturally occurring variations (e.g. polymorphisms), each with its own valid existence. This clone is substantially in agreement with the reference, but a complete review of all prevailing variants is recommended prior to use. [More info](#)

OTI Annotation: This clone was engineered to express the complete ORF with an expression tag. Expression varies depending on the nature of the gene.

Components: The ORF clone is ion-exchange column purified and shipped in a 2D barcoded Matrix tube containing 10ug of transfection-ready, dried plasmid DNA (reconstitute with 100 ul of water).

Reconstitution Method:

1. Centrifuge at 5,000xg for 5min.
2. Carefully open the tube and add 100ul of sterile water to dissolve the DNA.
3. Close the tube and incubate for 10 minutes at room temperature.
4. Briefly vortex the tube and then do a quick spin (less than 5000xg) to concentrate the liquid at the bottom.
5. Store the suspended plasmid at -20°C. The DNA is stable for at least one year from date of shipping when stored at -20°C.

RefSeq: [NM_001291050.1](#), [NP_001277979.1](#)

RefSeq Size: 3592 bp

RefSeq ORF: 1476 bp

Locus ID: 74182

UniProt ID: [Q8C0L9](#)

Cytogenetics: 2

MW: 56.4 kDa

Gene Summary: May be involved in the negative regulation of skeletal muscle differentiation, independently of its glycerophosphocholine phosphodiesterase activity.[UniProtKB/Swiss-Prot Function]