

## Product datasheet for **MR229996**

### Schip1 (NM\_001282044) Mouse Tagged ORF Clone

#### Product data:

|                    |  |
|--------------------|--|
| Product Type:      | Expression Plasmids                          |
| Product Name:      | Schip1 (NM_001282044) Mouse Tagged ORF Clone |
| Tag:               | Myc-DDK                                      |
| Symbol:            | Schip1                                       |
| Synonyms:          | Nf2ip; Schip-1                               |
| Vector:            | pCMV6-Entry (PS100001)                       |
| E. coli Selection: | Kanamycin (25 ug/mL)                         |
| Cell Selection:    | Neomycin                                     |



[View online »](#)

**ORF Nucleotide Sequence:**

>MR229996 representing NM\_001282044  
 Red=Cloning site Blue=ORF Green=Tags(s)

TTTTGTAATACGACTCACTATAGGGCGGCCGGAATTCGTCGACTGGATCCGGTACCGAGGAGATCTGCC  
 GCC**CGGATCGCC**

ATGGATCTAGGCAGTGACGCCGCGCAGCAGCAGCAGCAGCCGCGCCAGCTACAATCCAATCCACCAAAG  
 TGACCCCTTGCTCCGAGTGCAAATCCTCATCGTCGCCGGGGGTAGCTTGACTTGGTGTCTGCTCTGGA  
 AGACTATGAAGAGCCCTCCCGGTCTACCAAGAAGAAGGTGATTGATGAGTGGGCTCCGGAGGAGGACGGG  
 GAGGAGGAGGAAGAGGAGGACGATCGAGGGTATCGGGATGACGGGTGTCCGGCCCGGAGCCGGGGACG  
 TGAGCGCCAGGATCGGCAGCAGCGGCAGCGGGAGCAGGAGCGCCGCCACCACCATGCCGTCCCCGATGCC  
 TAACGGCAACCTCCATCCGCACGACCCTCAAGACCTCAGGCACAATGGCAACGTGGTGGTAGCTGGCCGG  
 CCGAACGCCTCTCGGTTCCCGCGCACCCATCCAGAAGACCCAGCCTCCAGGGAGCCGGCGGGAGGCC  
 GAAACCGGCATCTGGGGCCTCTGCCTCAGCCACCGGACGGCGGGACGCGGGTCCCGGAAGAACCCC  
 TGGCCCCCAATGGACTGGGAGCATTGAAAAGCATCTGGCCGGGCTGCAGTTCGGGAGCAGGAGGTG  
 CGAAACCAGGGTCAGGCGAGGACCAACTCCACCTCTGCACAGAAGAATGAGAGAGAGTCTATCAGACAGA  
 AGTTGGCACTCGGAAGCTTCTTTGACGATGGCCAGGAATCTATACCAGCTGCAGCAAAAGTGGGAAGCC  
 AAGCCTTTCTGCAAGACTACAGAGCGGGATGAACCTCCAGATATGCTTTGTCAATGACAGCGCAGTGAC  
 AAGGACAGCGATGCGATGACAGTAAGACGGAACCCAGCTTGACACGCCCTTGTCACCATGAGCAAGC  
 AGAGTTCTTCTATTTCGGATAGAGACACAACCTGAGGAGGAGTCTGAATCCCTGGATGACATGGACTTCT  
 CACAAGGCAAAAGAAGCTACAAGCTGAAGCCAAAATGGCTCTGGCCATGGCCAAACCAATGGCCAAAATG  
 CAAGTAGAAGTGGAAAAACAGAACAGGAAAAAGTCTCCCGTCGCTGATCTTCTCCACACATGCCTCACA  
 TAAGCGAATGTTGATGAAAAGAAGCTTAAAGCCACCGACCTGAGAGACATGACTATCGGGCAGCTACA  
 AGTGATCGTCAATGACCTCCACTCCAGATTGAAAGTTTGAATGAAGAGTTGGTCCAGCTGCTCCTTATT  
 CGAGATGAGCTGCACACAGAACAAGATGCCATGCTGGTGGACATTGAAGACTTGACTAGACACGCTGAGA  
 GTCAGCAGAAGCACATGGCTGAGAAAATGCCCGCGAAG

**ACGCGT**ACGCGGCCGCTCGAGCAGAACTCATCTCAGAAGAGGATCTGGCAGCAAATGATATCCTGGATT  
 ACAAGGATGACGACGATAAGGTTTAA

**Protein Sequence:**

>MR229996 representing NM\_001282044  
 Red=Cloning site Green=Tags(s)

MDLGSDAGSSSSSRASSQSNSTKVTPCSECKSSSSSPGGSLDLVSALEDYEEFPVYQKKVIDEWAPEEDG  
 EEEEEEDDRGYRDDGCPAREPGDVSARIGSSGSGRSAATTMPSPMPNGNLHPHPDQDLRHNGNVVAGR  
 PNASRVPRRIQKTQPPGSRGRNRASGGLCLQPPDGGTRVPEEPPAPPMDWEALEKHLAGLQFREQEV  
 RNQGQARTNSTSAQKNERESIRQKLALGSFFDDGPGIYTSKSKSGKPSLSARLQSGMNLQICFVNDSSGD  
 KDSADDSKTETSLDTPLSPMSKQSSSYSDRDTTEEESESLDDMDFLTRQKQLQAEAKMALAMAKPMAK  
 QVEVEKQNRKSPVADLLPHMPHISECLMKRSLKPTDLRDMTIGQLQVI VNDLHSQIESLNEELVQLLLI  
 RDELHTEQDAMLVDIEDLTRHAESQKHMMAEKMPAK

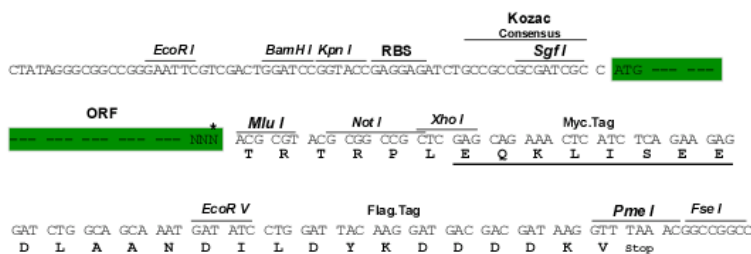
**TR**TRPLEQKLI SEEDLAANDILDYKDDDDKV

**Restriction Sites:**

Sgfl-MluI

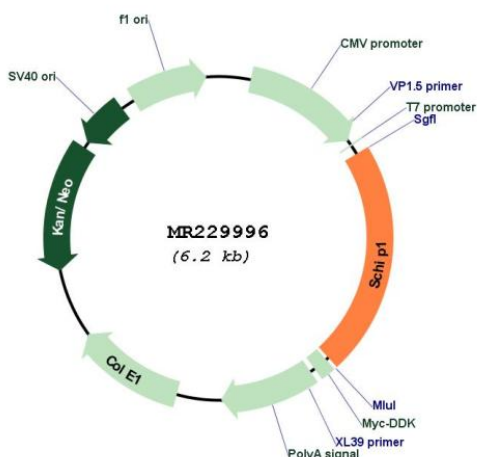
Cloning Scheme:

Cloning sites used for ORF Shuttling:



\* The last codon before the Stop codon of the ORF

Plasmid Map:



- ACCN:** NM\_001282044
- ORF Size:** 1368 bp
- OTI Disclaimer:** The molecular sequence of this clone aligns with the gene accession number as a point of reference only. However, individual transcript sequences of the same gene can differ through naturally occurring variations (e.g. polymorphisms), each with its own valid existence. This clone is substantially in agreement with the reference, but a complete review of all prevailing variants is recommended prior to use. [More info](#)
- OTI Annotation:** This clone was engineered to express the complete ORF with an expression tag. Expression varies depending on the nature of the gene.
- Components:** The ORF clone is ion-exchange column purified and shipped in a 2D barcoded Matrix tube containing 10ug of transfection-ready, dried plasmid DNA (reconstitute with 100 ul of water).

**Reconstitution Method:**

1. Centrifuge at 5,000xg for 5min.
2. Carefully open the tube and add 100ul of sterile water to dissolve the DNA.
3. Close the tube and incubate for 10 minutes at room temperature.
4. Briefly vortex the tube and then do a quick spin (less than 5000xg) to concentrate the liquid at the bottom.
5. Store the suspended plasmid at -20°C. The DNA is stable for at least one year from date of shipping when stored at -20°C.

**RefSeq:** [NM\\_001282044.1](#), [NP\\_001268973.1](#)

**RefSeq Size:** 2202 bp

**RefSeq ORF:** 1371 bp

**Locus ID:** 30953

**UniProt ID:** [P0DPB4](#)

**Cytogenetics:** 3 E1

**MW:** 50.4 kDa