

Product datasheet for MR229936

Etv6 (NM_001303102) Mouse Tagged ORF Clone

Product data:

Product Type: Expression Plasmids
Product Name: Etv6 (NM_001303102) Mouse Tagged ORF Clone
Tag: Myc-DDK
Symbol: Etv6
Synonyms: AW123102; AW557856; Te; Tel
Vector: pCMV6-Entry (PS100001)
E. coli Selection: Kanamycin (25 ug/mL)
Cell Selection: Neomycin
ORF Nucleotide Sequence: >MR229936 representing NM_001303102
 Red=Cloning site Blue=ORF Green=Tags(s)

TTTTGTAATACGACTCACTATAGGGCGCCGGGAATTCGTCGACTGGATCCGGTACCGAGGAGATCTGCC
 GCC**CGGATCGCC**

ATGGAGGAAGACTCGATCCACCTGCCAACACACCTGCGTTTGCAGCCGATTTACTGGAGCAGAGATGACG
 TAGCCCAGTGGCTCAAGTGGGCAGAAAAAGAGTTTTCTTTAAGGCCATTGAGAGCAACAAGTTCGAAAT
 GAATGGCAAGGCCCTCTGCTGTGACCAAAGAGGATTTCCGCTACCGATCTCCTCATTACAGGCGACGTG
 CTCTATGAACTCCTTACGATATCCTGAAGCAGAGGAAATCTCGAATGCTTCTCACCATTCTTCCCC
 CTGGGGACTCTATCCACACCAAGCCAGAGGTCTCCTGCATCAGAACCATGACGAAGATAACTGTGTCCA
 GAGGACACCCAGGACGCCCGGGAGAGCGTGCACCACAACCTCCACCATCGAACTTTACATCGCCCT
 AGGTCACCCATCACCACAACCACAGGCCTTCTCCTGACCCCGAACAGCAGCGGCCCCAGCGGTCCCCC
 TAGACAACATGAGCCGCCCTCTCGCCAGTGGAGAAAGCCAGGGGCCAGGCTACAGCAGGAGAAACA
 CCACCAGGAAACGTACCCCTGTGAGTGTCTCCTGTGAGAATAATCACTGCCTGCCCTCAAGCCCTGG
 CAGGAGAGCACTCGAGTGATCCAGCTGATGCCAGCCCCATCATGCACCCTTTGATCCTGAACCCCGGC
 ACTCGCACTCGGTGGACTTCAAACAGTCCCGCACTCCGAGGATGGGATGAATCGGGAAGGGAAGCCAT
 CAACCTGTCTCATCGGGAGGACCTGGCTTACTTGAACCACATCATGGTCTCTATGTCCCCACCGAAGAG
 CACGCCATGCCATTGGGAGAATAGCAGACTGTAGACTGCTTTGGGATTATGTCTATCAGTTGCTGTCTG
 ACAGCCGGTACGAAAACCTCATCCGATGGGAGGACAAAGAATCCAAAATATTCCGGATAGTGGATCCCAA
 CGGACTGGCTCGACTCTGGGAAACCAAAGAACAACAACATGACCTATGAGAAAATGTCCAGAGCC
 CTGCGCCACTACTACAACTAACATTATCAGGAAGGAGCCCGGACAAAGGCTTTTGTTCAGGTTTCATGA
 AAACCCAGATGAGATCATGAGTGGCCGACAGACCGTCTAGAACACCTCGAGTCTCAAGTGTGGATGA
 ACAACCGTACCAAGAGGATGAACCTACCATAGCCTCACCGGTGGGCTGGCCAAGAGGAAACCTGCCACG
 GGGACCGCAGGAGCGTGATGGAAGCAGCGAGCTAGGGGTGGCTGTAAGGAAGAGACCCGGAA

ACGCGTACGCGGCCGCTCGAGCAGAAACTCATCTCAGAAGAGGATCTGGCAGCAAATGATATCCTGGATT
 ACAAGGATGACGACGATAAGGTTTAA



[View online »](#)

Protein Sequence: >MR229936 representing NM_001303102
 Red=Cloning site Green=Tags(s)

MEEDSIHLPTHLRLQPIYWSRDDVAQWLKWAENEFSLRPIESNKFEMNGKALLLLTKEDFRYRSPHSGDV
 LYELLQHILKQRKSRMLFSPFFPPGDSIHTKPEVLLHQNHDEDNCVQRTPRTPAESVHHNPPTIELLHRP
 RSPITTNHRPSPDPEQQRSPQRSPLDNMSRRLSPVEKAQGPRLQQENNHQETYPLSVSPVENNHCLPSSPW
 QESTRVIQLMPSPIMHPLILNPRHSHSVDFKQSRHSEGDGMNREGKPINLSHREDLAYLNHIMVMSMPPEE
 HAMPIGRIADCRLLWDYVYQLLSDSRYENFIRWEDKESKIFRIVDPNGLARLWGNHKNRTNMTYEKMSRA
 LRHYKLNIRKEPGQRLLEFRFMKTPDEIMSGRTRDRLEHLESQVLDQTYQEDEPTIASPVGWPRGNLPT
 GTAGGVMEAGELGVAVKEETRE

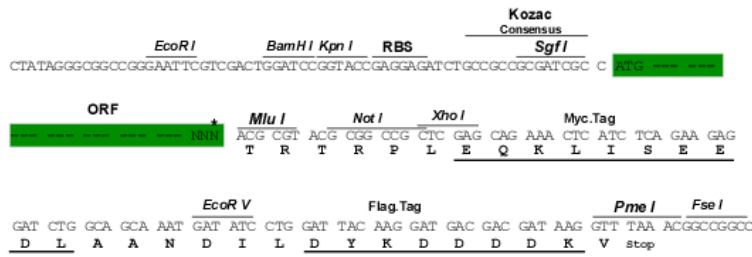
TRTRPLEQKLISEEDLAANDILDYKDDDDKV

Restriction Sites:

SgfI-MluI

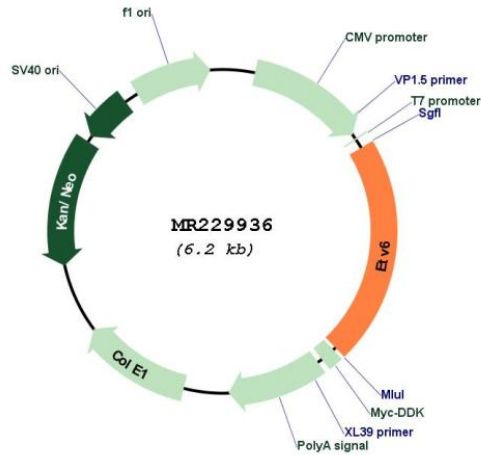
Cloning Scheme:

Cloning sites used for ORF Shuttling:



* The last codon before the Stop codon of the ORF

Plasmid Map:



ACCN:

NM_001303102

ORF Size:	1326 bp
OTI Disclaimer:	The molecular sequence of this clone aligns with the gene accession number as a point of reference only. However, individual transcript sequences of the same gene can differ through naturally occurring variations (e.g. polymorphisms), each with its own valid existence. This clone is substantially in agreement with the reference, but a complete review of all prevailing variants is recommended prior to use. More info
OTI Annotation:	This clone was engineered to express the complete ORF with an expression tag. Expression varies depending on the nature of the gene.
Components:	The ORF clone is ion-exchange column purified and shipped in a 2D barcoded Matrix tube containing 10ug of transfection-ready, dried plasmid DNA (reconstitute with 100 ul of water).
Reconstitution Method:	<ol style="list-style-type: none">1. Centrifuge at 5,000xg for 5min.2. Carefully open the tube and add 100ul of sterile water to dissolve the DNA.3. Close the tube and incubate for 10 minutes at room temperature.4. Briefly vortex the tube and then do a quick spin (less than 5000xg) to concentrate the liquid at the bottom.5. Store the suspended plasmid at -20°C. The DNA is stable for at least one year from date of shipping when stored at -20°C.
RefSeq:	NM_001303102.1 , NP_001290031.1
RefSeq Size:	5707 bp
RefSeq ORF:	1329 bp
Locus ID:	14011
Cytogenetics:	6 64.58 cM
MW:	52.1 kDa
Gene Summary:	This gene encodes a transcriptional repressor belonging to the ETS family of proteins. Knockout of this gene in mice results in embryonic lethality due to defective angiogenesis. In humans, this gene is often involved in chromosome rearrangements associated with specific cancers. Alternate splicing of this gene results in multiple transcript variants. [provided by RefSeq, Dec 2014]