

## Product datasheet for MR229914

### Tulp2 (NM\_001290998) Mouse Tagged ORF Clone

#### Product data:

Product Type:	Expression Plasmids
Product Name:	Tulp2 (NM_001290998) Mouse Tagged ORF Clone
Tag:	Myc-DDK
Symbol:	Tulp2
Synonyms:	Pdet
Vector:	pCMV6-Entry (PS100001)
E. coli Selection:	Kanamycin (25 ug/mL)
Cell Selection:	Neomycin
ORF Nucleotide Sequence:	>MR229914 representing NM_001290998 Red=Cloning site Blue=ORF Green=Tags(s)

TTTTGTAATACGACTCACTATAGGGCGCCGGAATTCGTCGACTGGATCCGGTACCGAGGAGATCTGCC  
GCCGCGATCGCC

ATGAGCTATGTCGCAGATGGGAGTGTATACACTCGGGCAACGGCCCTGCGGTCCGTCATCATCTTTGCT  
GGCTTCCAGACAGCTCCGATTCCAGACGTGGAGGAAGTGACCATGGAAGACATCCCCGTCATCTCCCGACC  
TCCCCAGACGAATCTGGCAAACCTACGCAGGGGCTGGTTAGCCTCCCCAGGACCCGGGATCAGTCAAGAA  
GAAAAAGAAGAAGAGGTTGGATCCACGGATGCCAGAGTTGAAGACAAGACACCCAGCCCAGACCCAGACC  
CAGACCCTACCGTGAACCTCTGACGGAGATCATGGAGACCTGGCACCCCTGCAAGGTGGAAGAAAACACAGC  
CCAGAAGAATACAGAAACAGCCTCTGGCATCGGGGATGAAGACCGGGAGAAGGGAGAGGTCACAGAGTCT  
ACAGAGACAAACTATGCCCCAGTGGCATCCAAGGTTTTGCAAGGCGACGATGGTGACGCCAGCAACCACA  
ATGCCTGGAACATGACCTGCCCCAGCCTCGCATTCCCGGCCCTCGGCTCGGGGAGGACATGGAAGCATA  
CGTGTGCTCCCTGCACCCCGAGACCACATGGTGCAGTGCCGCATCGTCCGAAACAAGCACGGCATGGAC  
AAGGGGATGTTCCCTTCTACTACCTCTACCTGGAGGCCGAGGATGGTGTAGCACATTTCTTCTGGCTG  
GGCGAAAAGGAAAAGAAGCAAACCTTCAAATTAATCTCATCTCCCTGGACCCCAAAGACATGCTCGCAA  
TGGGAGCAAATTTGTAGGCAAAGTTAGATCCAATGTCTTGGGCACGAAATTCACCATCTTCGATAATGGG  
GTGAACCTGAGCGGAGTTACTGGTTCAGACAGTGCACCGGATCAGAGAGGAGCTGGGAGTCTGTGTT  
ATGAGACCAATGTCTTGGGATTCAGGGGCTCGGAAAATGACTGTGATCCTTCCAGGAATGGACAGCCG  
GAAGCAGAGGATGAAAGTCCAGCCACAAAATGATCAGGATTCCATATTGAGTCGCGTACAGAAGGGCGCT  
GGACACGGGCTGCTTCTACTGCAGAACAAGGCCCATCGTGGAGCGACGAAAGCGGCGCATACGTACTCA  
ATTTTCACGGTCGCGTCACGCGGCTTCCAGTCAAGAACTCCAGATAGTGCACCCGGATGAACCCGACCA  
CCTGGTGTCCAGTTTGGCCGTGTGCCCAAACATATTCACGATGGATTTCCGATATCCTCTTTGCCCG  
CTCCAAGCCTTCGCCATCTGCTTATCCAGTTTCGATGGGAAACTGGCGTGTGAG

ACGCGTACGCGGCCGCTCGAGCAGAAACTCATCTCAGAAGAGGATCTGGCAGCAAATGATATCCTGGATT  
ACAAGGATGACGACGATAAGGTTTAA



[View online »](#)

Protein Sequence: >MR229914 representing NM\_001290998  
 Red=Cloning site Green=Tags(s)

MSYVADGSVYTRGNPAVRHHLCLWLPDSSSDVVEEVTMEDIPVISRPPQTNLANLRRGWLASPGPGISQE  
 EKEEEVGSVDARVEDKTPSPDPDPDPTVNSDGDHGLAPCKVEENTAQKNTETASGIGDEDREKGEVTES  
 TETNYAPVASKVLQDDGDASNHNWMTCPQPRIPGPRLGEDMEAYVLLPAPRDHMQCRIVRNKHGMD  
 KGMFSPSYLYLEAEDGVAHFLLAGRKRKRKSKTSNYLI SLDPKDMSRNGSNFVGVKVRSNVLGTFKFTIFDNG  
 VNPERSYWVPSARIREELGVVCEYETNVLGFRGPRKMTVILPGMDSRKQRMKVQPQNDQDSILSRVQKGA  
 GHGLLLLQNKAPSWDESGAYVLNFHGRVTRASVKNFQIVHPDEPDHLVLQFGRVAPNIFTFMDFRYPLCP  
 LQFAIICLSSFDGKLACE

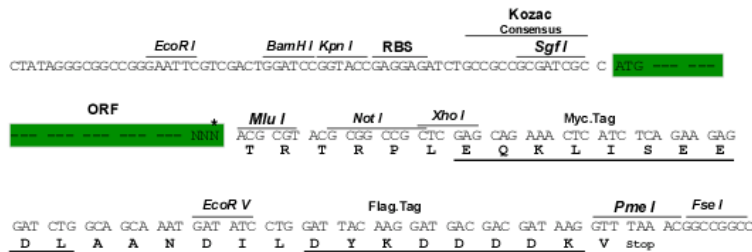
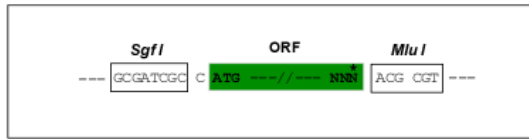
TRTRPLEQKLISEEDLAANDILDYKDDDDKV

Restriction Sites:

Sgfl-MluI

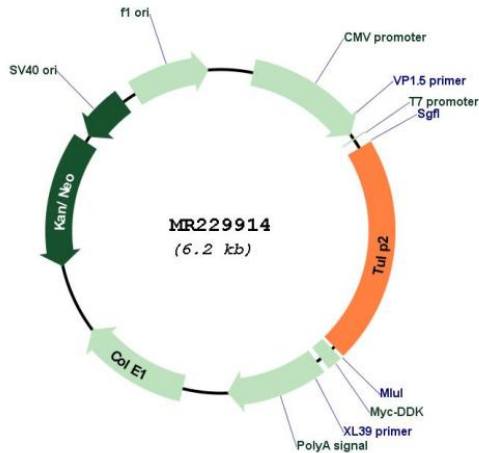
Cloning Scheme:

Cloning sites used for ORF Shuttling:



\* The last codon before the Stop codon of the ORF

Plasmid Map:



ACCN:

NM\_001290998

<b>ORF Size:</b>	1314 bp
<b>OTI Disclaimer:</b>	The molecular sequence of this clone aligns with the gene accession number as a point of reference only. However, individual transcript sequences of the same gene can differ through naturally occurring variations (e.g. polymorphisms), each with its own valid existence. This clone is substantially in agreement with the reference, but a complete review of all prevailing variants is recommended prior to use. <a href="#">More info</a>
<b>OTI Annotation:</b>	This clone was engineered to express the complete ORF with an expression tag. Expression varies depending on the nature of the gene.
<b>Components:</b>	The ORF clone is ion-exchange column purified and shipped in a 2D barcoded Matrix tube containing 10ug of transfection-ready, dried plasmid DNA (reconstitute with 100 ul of water).
<b>Reconstitution Method:</b>	<ol style="list-style-type: none"><li>1. Centrifuge at 5,000xg for 5min.</li><li>2. Carefully open the tube and add 100ul of sterile water to dissolve the DNA.</li><li>3. Close the tube and incubate for 10 minutes at room temperature.</li><li>4. Briefly vortex the tube and then do a quick spin (less than 5000xg) to concentrate the liquid at the bottom.</li><li>5. Store the suspended plasmid at -20°C. The DNA is stable for at least one year from date of shipping when stored at -20°C.</li></ol>
<b>RefSeq:</b>	<a href="#">NM_001290998.2</a> , <a href="#">NP_001277927.1</a>
<b>RefSeq Size:</b>	1530 bp
<b>RefSeq ORF:</b>	1317 bp
<b>Locus ID:</b>	56734
<b>UniProt ID:</b>	<a href="#">P46686</a>
<b>Cytogenetics:</b>	7 B3
<b>MW:</b>	49 kDa