

## Product datasheet for MR229886

### Rcor3 (NM\_001290278) Mouse Tagged ORF Clone

#### Product data:

Product Type:	Expression Plasmids
Product Name:	Rcor3 (NM_001290278) Mouse Tagged ORF Clone
Tag:	Myc-DDK
Symbol:	Rcor3
Synonyms:	4921514E24Rik; C730034D20Rik; E130101E15Rik
Vector:	pCMV6-Entry (PS100001)
E. coli Selection:	Kanamycin (25 ug/mL)
Cell Selection:	Neomycin
ORF Nucleotide Sequence:	>MR229886 representing NM_001290278 Red=Cloning site Blue=ORF Green=Tags(s)

TTTTGTAATACGACTCACTATAGGGCGGCCGGAATTCGTCGACTGGATCCGGTACCGAGGAGATCTGCC  
GCC**GCGATCGCC**

ATGCCCGCATGATGGAGAAAGGGCCCGAGTTACTGGGAAGAGCCGATCGGCCAACGGCGGCCAAGA  
GCCCGGGGGAGGCGGGCTCCTCGGCCAACGGCGGGCTGCACTTCTCGGAGCCGAGAGCGGCTGCAG  
CAGCGACGACGAGCACGGGGATGTTGGGATGAGAGTCGGAGCTGAATACCAAGCTCGGATCCCTGAATTC  
GATCCAGGTGCTACCAAGTACACAGATAAAGACAATGGAGGCATGCTTGTGTGGTCTCCTATCACAGTA  
TCCCAGATGCCAAATTGGATGAATATATCGCCATTGCAAAAGAGAAACATGGCTACAATGTTGAACAGGC  
GCTTGGCATGTTGTTCTGGCATAAACACAACATTGAGAAGTCCCTTGGGACCTCCCTAACTTCACGCC  
TTTCCGGATGAGTGGACAGTGAAGACAAGTCCCTGTTTGAACAAGCCTTTAGTTTTCATGGGAAGAGCT  
TTCACAGGATTCAGCAATGCTTCCAGATAAGACAATTGCAAGTCTTGTAAAGTATTACTATTCTTGAA  
AAAACTCGCTCAAGGACAAGTTTGGATGGATCGCCAGGCTCGTAACTAGCCAATAGACACAATCAGGGT  
GACAGTGATGATGACGTAGAAGAAGCTCACCCATGGATGGAAACGACAGTGACTACGCCAAAAGAAAG  
AAGCCAAAAGAGAGGGTAACGCTGACCAGCCGGTCCAAACCAGCAAGATCGGCCTGGGCCGGAGAGAGTA  
CCAGAGTCTGCAGCACCGCCCACTCTCAGCGTCCAAGTGCCGCCCTCCTAAGGGCATGTATCTAACC  
CAGGAGGACGTGGTGGCTGTCTCCTGCAGCCCCAACGCAGCCAACACCATCCTGAGGCAACTGGACATGG  
AGCTGATCTCTCAAGCGCCAGGTTGAGAATGCTAAGCAAGTAAACAGTGCCTTAAGCAGAAAATGGA  
AGGTGGAATTGAAGATTCAAACCGCTGAGTCAAATCAGAAAATTAATGCCCGTTGGACCACAGAGGAG  
CAGCTTAGCAGTGCAAGGCACAGACCCACAGGCTCCTCGGACTCTGGGTCCATCACCTCTGCCCA  
TCATCCACTCCAACCAACAGTCCCATTGCCACTCTGAACCAGCCTCCACCCTTCTCGTCCAACAC  
TGCTGCCGCCCTGCTTTCACCGACAACCTCCTCACTCCAGCAGCAGGCTCGGTTTCATCCAGCCCCG  
GCCAACTCTCAATCAGCCTCCTCCACTCTCATTCGCCCTGC

**ACGCGT**ACGCGGCCGCTCGAGCAGAAACTCATCTCAGAAGAGGATCTGGCAGCAAATGATATCCTGGATT  
ACAAGGATGACGACGATAAGGTTTAA



**Protein Sequence:** >MR229886 representing NM\_001290278  
 Red=Cloning site Green=Tags(s)

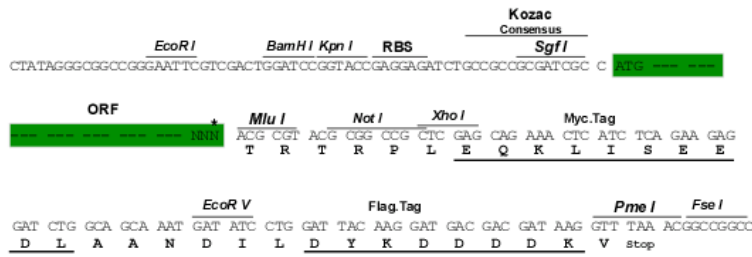
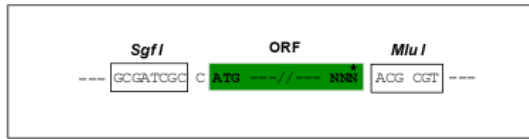
MPGMMEKGPPELLGKSRSANGGAKSPAGGGGSSANGGLHFSEPESGCSSDDEHGDVGMRVGAEYQARIPEF  
 DPGATKYTDKNGGMLVWSPYHSIPDAKLDEYIAIAKEKHGYNVEQALGMLFVHKHNIKSLADLPNFTF  
 FPDEWTVEDKVLFEQAFSFHGKSFHRIQQMLPDKTIASLVKYYYSWKKTRSRTSLMDRQARKLANRHNQG  
 DSDDDVEEAHPMDGNDSDYDPKKEAKREGNADQPVTQSKIGLGRREYQSLQHRHHSQRSKCRPPKGMYL  
 QEDVVAVSCSPNAANTILRQLDMELISLKRQVQNAKQVNSALKQKMEGGIEEFKPPESNQKINARWTTEE  
 QLLAVQGTDPGTGSSDGSITSCPIIHSNTNSPHCHSEPASTTSSSNTACRPCSSPTTSSSTPAAGSVHPAP  
 ANSQSASSTSHSPC

TRTRPLEQKLISEEDLAANDILDYKDDDDKV

**Restriction Sites:**  
**Cloning Scheme:**

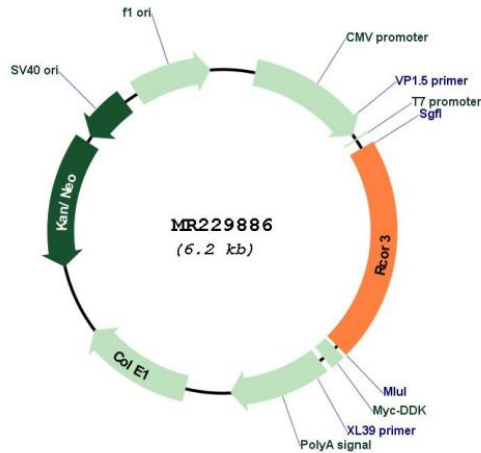
SgfI-MluI

Cloning sites used for ORF Shuttling:



\* The last codon before the Stop codon of the ORF

**Plasmid Map:**



**ACCN:** NM\_001290278

<b>ORF Size:</b>	1302 bp
<b>OTI Disclaimer:</b>	The molecular sequence of this clone aligns with the gene accession number as a point of reference only. However, individual transcript sequences of the same gene can differ through naturally occurring variations (e.g. polymorphisms), each with its own valid existence. This clone is substantially in agreement with the reference, but a complete review of all prevailing variants is recommended prior to use. <a href="#">More info</a>
<b>OTI Annotation:</b>	This clone was engineered to express the complete ORF with an expression tag. Expression varies depending on the nature of the gene.
<b>Components:</b>	The ORF clone is ion-exchange column purified and shipped in a 2D barcoded Matrix tube containing 10ug of transfection-ready, dried plasmid DNA (reconstitute with 100 ul of water).
<b>Reconstitution Method:</b>	<ol style="list-style-type: none"><li>1. Centrifuge at 5,000xg for 5min.</li><li>2. Carefully open the tube and add 100ul of sterile water to dissolve the DNA.</li><li>3. Close the tube and incubate for 10 minutes at room temperature.</li><li>4. Briefly vortex the tube and then do a quick spin (less than 5000xg) to concentrate the liquid at the bottom.</li><li>5. Store the suspended plasmid at -20°C. The DNA is stable for at least one year from date of shipping when stored at -20°C.</li></ol>
<b>RefSeq:</b>	<a href="#">NM_001290278.1</a> , <a href="#">NP_001277207.1</a>
<b>RefSeq Size:</b>	3832 bp
<b>RefSeq ORF:</b>	1305 bp
<b>Locus ID:</b>	214742
<b>UniProt ID:</b>	<a href="#">Q6PGA0</a>
<b>Cytogenetics:</b>	1 H6
<b>MW:</b>	47.9 kDa
<b>Gene Summary:</b>	May act as a component of a corepressor complex that represses transcription. [UniProtKB/Swiss-Prot Function]