

Product datasheet for MR229871

Strada (NM_001252448) Mouse Tagged ORF Clone

Product data:

Product Type: Expression Plasmids
Product Name: Strada (NM_001252448) Mouse Tagged ORF Clone
Tag: Myc-DDK
Symbol: Strada
Synonyms: 2610019A05Rik; 6030402H20Rik; AI480680; E130112C09Rik
Vector: pCMV6-Entry (PS100001)
E. coli Selection: Kanamycin (25 ug/mL)
Cell Selection: Neomycin
ORF Nucleotide Sequence: >MR229871 representing NM_001252448
 Red=Cloning site Blue=ORF Green=Tags(s)

TTTTGTAATACGACTCACTATAGGGCGCCGGAATTCGTCGACTGGATCCGGTACCGAGGAGATCTGCC
 GCC**GCGATCGCC**

ATGTCTTTTCTTGTAAAGTAAACCAGAGCGCATTAGGCGGTGGTCTCGGAAAAGTTCATTGTTGAGGGCT
 TAAGAGATTTGGAAGTGGAGAGCAGCCTCCGGGTGACACTCGGAGAAAAGCCAATGAGGCGAGCTC
 AGAGTCCATAGCATCTTTCTCCAACCAGAGATGATGAGCAGCTTCTTCCAGAGGGCGGGTGTATGAG
 CTGCTCACCATCATAGGCAAAGGTTTGGAGACTTGTGACAGTGAATTTAGCCAGGTACAAACCAACGG
 GAGAGTATGTGACAGTACGAAGGATCAACCTAGAAGCTTGTTCGAATGAGATGGTACATTCTTGCAGGG
 GGAGCTTCATGTCTTAACTCTTCAGCCATCCCAATATAGTACCGTATCGAGCCACCTTCATCGCAGAT
 AATGAGCTGTGGGTGTCACATCATTTATGGCGTACGGCTCTGCAAAGGATCTCATTGGCACACACTTCA
 TGGATGGCATGAATGAACTGGCGATTGCATACATCCTGCAGGGGGTGCTAAAGGCCTTAGACTACATCCA
 TCACATGGGCTATGTGCACAGGAGTGTCAAGGCCAGCCACATTCTGATCTCCACGGATGGGAAGGTCTAC
 CTGTCTGGTTACGCAGCAACCTTAGCATGATTAGTACGGGCAGCGGCAGCGTGCAGTCCACGATTTCC
 CCAAATATAGTATCAAGTCTGCCTGGCTCAGCCAGAAGTCTCCAGCAGAATCTTCAGGGTTACGA
 TGCCAAGTCCGATATCTACAGTGTGGAAATCACAGCATGTGAACTAGCCAATGGCCATGCCCCCTTCAAA
 GATATGCCTGCCACTCAGATGCTGCTAGAAAACTTAATGGCACAGTGCCTGCCTGCTGGACACCAGCA
 CCATCCCTGCCGAGGAGCTGACCATGAGTCCCTCCCGCTCCATCGCCAACCCTGGCTGAATGACAGCCT
 GGCTGCTGGTAGCCTCCGGCCTTCCAATGGCGACTCGCTTCCCACCCTACCACCGAACCTTCTCGCT
 CACTTCCACAACCTTTGTGGAACAGTGCCTTACGCGCAACCCTGACGCAAGGCCAAACGCCAGCACCTGC
 TGAACCACTCCTTCTTCAAGCAGATCAAGCGCGTGTCTCCGAGGCTTTGCTGAGTTGCTCCGCCAGT
 CACTCCCATCACCAACTCGAGGGCAGCCAGTCTCAGGATCACAGTGAATCTTCGGCCTGGTGACAAAC
 CTAGAAGACCTGGAGGTGGATGACTGGGAGTTC

ACGCGTACGCGGCCGCTCGAGCAGAAACTCATCTCAGAAGAGGATCTGGCAGCAAATGATATCCTGGATT
 ACAAGGATGACGACGATAAGGTTTAA



[View online »](#)

Protein Sequence: >MR229871 representing NM_001252448
 Red=Cloning site Green=Tags(s)

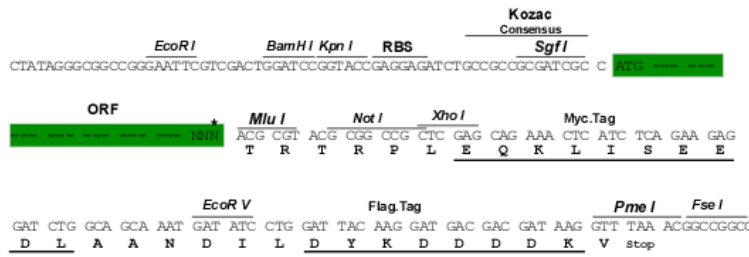
MSFLVSKPERIRRWSEKFIVEGLRDLELFGEQPPGDTRRKANEASSESIASFSPKPEMMSSFLPEGGCYE
 LLTIIGKGFEDLMTVNLARYKPTGEYVTVRRINLEACSNEMVTFLLQGLHVSXKLFVSHPNIVPYRATFIAD
 NELWVVTSMAYGSAKDLIGTHFMDGMNELAIAYILQGVKALDYIHHMGYVHRSVKASHILISTDGKVV
 LSGLRSNLSMISHGQRQRAVHDFPKYSIKVLPWLSPEVLQQLQGYDAKSDIYSVGITACELANGHVPFK
 DMPATQMLLEKLNQTVPCLLDTSTIPAELTMSPSRSIANPGLNDSLAAAGSLRPSNGDSPSHPYHRTFSP
 HFHNFVEQCLQRNPDARPNASTLLNHSFFKQIKRRASEALPELLRPVTPITNFEQSQSDHSGIFGLVTN
 LEDLEVDWEF

TRTRPLEQKLISEEDLAANDILDYKDDDDKV

Restriction Sites:
Cloning Scheme:

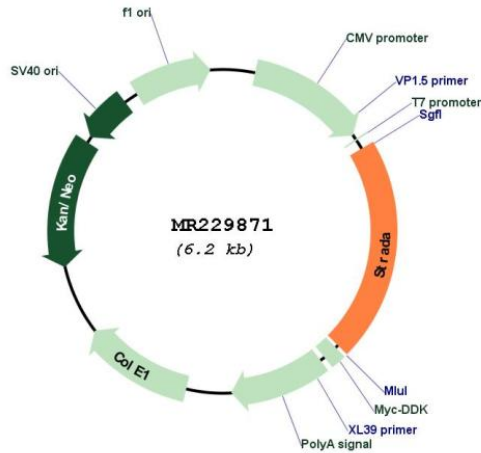
SgfI-MluI

Cloning sites used for ORF Shuttling:



* The last codon before the Stop codon of the ORF

Plasmid Map:



ACCN: NM_001252448

ORF Size:	1293 bp
OTI Disclaimer:	The molecular sequence of this clone aligns with the gene accession number as a point of reference only. However, individual transcript sequences of the same gene can differ through naturally occurring variations (e.g. polymorphisms), each with its own valid existence. This clone is substantially in agreement with the reference, but a complete review of all prevailing variants is recommended prior to use. More info
OTI Annotation:	This clone was engineered to express the complete ORF with an expression tag. Expression varies depending on the nature of the gene.
Components:	The ORF clone is ion-exchange column purified and shipped in a 2D barcoded Matrix tube containing 10ug of transfection-ready, dried plasmid DNA (reconstitute with 100 ul of water).
Reconstitution Method:	<ol style="list-style-type: none">1. Centrifuge at 5,000xg for 5min.2. Carefully open the tube and add 100ul of sterile water to dissolve the DNA.3. Close the tube and incubate for 10 minutes at room temperature.4. Briefly vortex the tube and then do a quick spin (less than 5000xg) to concentrate the liquid at the bottom.5. Store the suspended plasmid at -20°C. The DNA is stable for at least one year from date of shipping when stored at -20°C.
RefSeq:	NM_001252448.1 , NP_001239377.1
RefSeq Size:	2543 bp
RefSeq ORF:	1296 bp
Locus ID:	72149
UniProt ID:	Q3UUJ4
Cytogenetics:	11 E1
MW:	48.7 kDa
Gene Summary:	Pseudokinase which, in complex with CAB39/MO25 (CAB39/MO25alpha or CAB39L/MO25beta), binds to and activates STK11/LKB1. Adopts a closed conformation typical of active protein kinases and binds STK11/LKB1 as a pseudosubstrate, promoting conformational change of STK11/LKB1 in an active conformation (By similarity). [UniProtKB/Swiss-Prot Function]