

Product datasheet for MR229854

Adra1a (NM_001271759) Mouse Tagged ORF Clone

Product data:

Product Type:	Expression Plasmids
Product Name:	Adra1a (NM_001271759) Mouse Tagged ORF Clone
Tag:	Myc-DDK
Symbol:	Adra1a
Synonyms:	Adr; Adra1c
Vector:	pCMV6-Entry (PS100001)
E. coli Selection:	Kanamycin (25 ug/mL)
Cell Selection:	Neomycin
ORF Nucleotide Sequence:	>MR229854 representing NM_001271759 Red=Cloning site Blue=ORF Green=Tags(s)

TTTTGTAATACGACTCACTATAGGGCGCCGGGAATTCGTCGACTGGATCCGGTACCGAGGAGATCTGCC
GCC**GCGATCGCC**

ATGGTGCTCTTTCTGAAAATGCTTCTGAAGGCTCCAACCTGCACCCACCCGCCAGCACAGGTGAACATTT
CTAAGGCCATTCTACTTGGGGTATCTTGGGGGCTCATCATTTTCGGGGTCTTGGGGAATATTTTGT
GATCCTCTCGGTGGCCTGTCATCGGCATCTGCACTCGGTGACTCACTACTACATTGTCAACCTGGCTGTG
GCAGACCTCCTCCTCACCTCCACCGTGCCTTCTCTGCCATCTTTGAGATCCTGGGCTACTGGGCT
TTGGCAGGGTGTCTGCAACATCTGGGCGCGGTGGACGTCTTATGCTGCACAGCGTCCATCATGGGCT
CTGCATCATCTCCATCGACCGATACATTGGTGTGAGCTACCCGCTGCGCTACCCACCATTTGCACCCAG
AGGAGGGGCGTCAGGGCTCTGCTCTGCTCTGGGCGCTTTCCTTGGTCATCTCCATCGGACCCCTGTTTCG
GCTGGAGGCAGCAGGCTCCGGAGGATGAGACCATCTGCCAAATCAATGAGGAGCCAGGATACGTGCTGTT
CTCAGCGCTGGGCTCTTCTACGTGCCACTGACCATCATCCTGGTATGTACTGTCGAGTCTACGTGGTA
GCCAAGAGAGAAAAGCCGAGGCCCAAGTCCGGCCTCAAGACCGACAAGTCAGACTCAGAGCAAGTGACGC
TCCGTATCCACCGTAAAAATGTCCCTGCAGAAGCAGCGGAGTAAGCAGTGCCAAAGAATAAGACTCACTT
CTCCGTGAGGCTGCTCAAGTTTTCCCGAGAGAAGAAAGCCGCAAGACGCTGGGCAATTGTGGTGGGATGC
TTCGTCCTCTGCTGGCTGCCATTCTTCCGTGATGCCATTGGGTCTTCTTCCCGAATTTCAAGCCAC
CGGAAACAGTTTTCAAAATAGTATTTTGGCTTGGGTACCTAAATAGTTGCATCAACCCTATCATATACCC
ATGCTCCAGCCAGGAGTTCAAGAAAGCCTTTCAGAATGTGCTGCGAATCCAGTGTCTTCGAGAAGGCAG
TCTTCCAAGCATGCCCTGGGCTACTCTGCACCCACCCAGCCAGGCTGTAGAGGGGCAGCACAGAGGCA
TGGTGCGTATCCCGTGGGCTCAGGAGAGACTTCTATAAGATCTCCAAGACAGATGGAGTCCGTGAATG
GAAGTTTTCTCTTCCATGCCCCAGGGATCGGCCAGGATTACCATGCCGAAGGACCAATCCGCCTGTACC
ACAGCCCGGGCTTTTATCCA

ACGCGTACGCGGGCGCTCGAGCAGAAACTCATCTCAGAAGAGGATCTGGCAGCAAATGATATCCTGGATT
ACAAGGATGACGACGATAAGGTTTAA



[View online »](#)

Protein Sequence: >MR229854 representing NM_001271759
 Red=Cloning site Green=Tags(s)

MVLLSENASEGSNCTHPPAQVNISKAILLGVLGGLIIFGVLGNILVILSVACHRHLHSVTHYYIVNLAV
 ADLLLTSTVLPFSAIFEILGYWAFGRVFCNIWAADVLCCTASIMGLCIISIDRYIGVSYPLRYPTIVTQ
 RRGVRRALLCVWALSIVISIGPLFGWRQQAPEDETICQINEEPGYVLF SALGSFYVPLTIIILVMYCRVYVV
 AKRESRGLKSGLKTDKSDSEQVTLRIHRKNVPAEGSGVSSAKNKTHFSVRLKLFKSREKKAAKTLGI VVGC
 FVLCWLPFFLVMPIGSFFPNFKPPETVFKIVFWLGYLNSCINPIIYPCSSQEFKKAFQNVLRIQCLRRRQ
 SSKHALGYTLHPPSQAVEGQHRGMVRIPVGSGETFYKISKTDGVREWKFFSSMPQGSARITMPKQDSACT
 TARGFYF

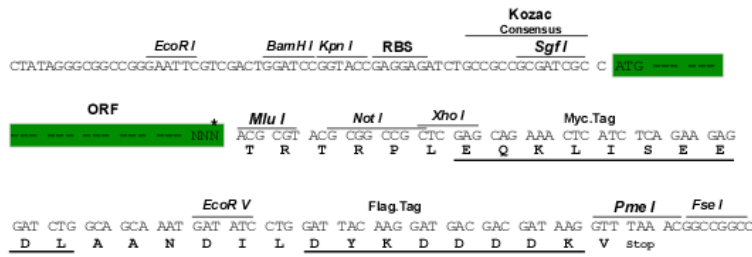
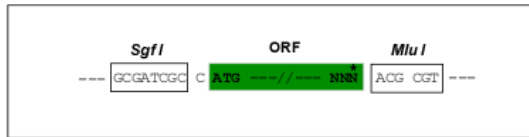
TRTRPLEQKLISEEDLAANDILDYKDDDDKV

Restriction Sites:

SgfI-MluI

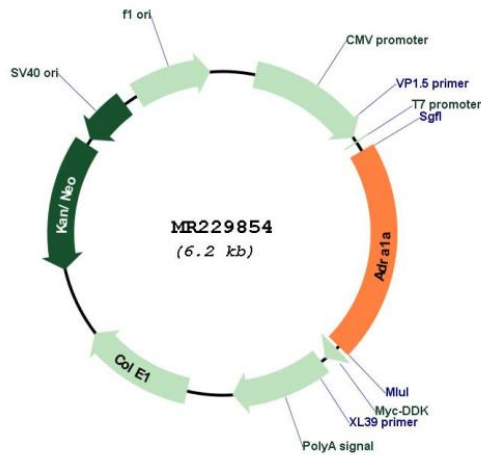
Cloning Scheme:

Cloning sites used for ORF Shuttling:



* The last codon before the Stop codon of the ORF

Plasmid Map:



ACCN: NM_001271759

ORF Size:	1281 bp
OTI Disclaimer:	The molecular sequence of this clone aligns with the gene accession number as a point of reference only. However, individual transcript sequences of the same gene can differ through naturally occurring variations (e.g. polymorphisms), each with its own valid existence. This clone is substantially in agreement with the reference, but a complete review of all prevailing variants is recommended prior to use. More info
OTI Annotation:	This clone was engineered to express the complete ORF with an expression tag. Expression varies depending on the nature of the gene.
Components:	The ORF clone is ion-exchange column purified and shipped in a 2D barcoded Matrix tube containing 10ug of transfection-ready, dried plasmid DNA (reconstitute with 100 ul of water).
Reconstitution Method:	<ol style="list-style-type: none">1. Centrifuge at 5,000xg for 5min.2. Carefully open the tube and add 100ul of sterile water to dissolve the DNA.3. Close the tube and incubate for 10 minutes at room temperature.4. Briefly vortex the tube and then do a quick spin (less than 5000xg) to concentrate the liquid at the bottom.5. Store the suspended plasmid at -20°C. The DNA is stable for at least one year from date of shipping when stored at -20°C.
RefSeq:	NM_001271759.1 , NP_001258688.1
RefSeq Size:	4118 bp
RefSeq ORF:	1284 bp
Locus ID:	11549
Cytogenetics:	14 D1
MW:	48 kDa
Gene Summary:	This gene encodes one of several multipass transmembrane proteins that function as G protein-coupled receptors. The encoded protein binds to epinephrine and norepinephrine to mediate signaling in cells of the cardiac, nervous, and other organ systems. Alternatively spliced transcript variants encoding multiple isoforms have been observed for this gene. [provided by RefSeq, Nov 2012]