

Product datasheet for MR229852

Cds2 (NM_001291039) Mouse Tagged ORF Clone

Product data:

Product Type: Expression Plasmids
Product Name: Cds2 (NM_001291039) Mouse Tagged ORF Clone
Tag: Myc-DDK
Symbol: Cds2
Synonyms: 5730450N06Rik; 5730460C18Rik; AI854580; D2Wsu127e
Vector: pCMV6-Entry (PS100001)
E. coli Selection: Kanamycin (25 ug/mL)
Cell Selection: Neomycin
ORF Nucleotide Sequence: >MR229852 representing NM_001291039
Red=Cloning site Blue=ORF Green=Tags(s)

TTTTGTAATACGACTCACTATAGGGCGCCGGAATTCGTCGACTGGATCCGGTACCGAGGAGATCTGCC
GCCGCGATCGCC

ATGGAATCAGAGTCCGAAGCAAAGCTAGATGGAGAGACAGCGTCTGACAGCGAGAGCCGAGCGGAAACAG
 CTCCCCTACCAACCTCCGTAGATGACACCCAGAGGTCCCTAACAGGGCCCTTCCAACCTGTCTCAAG
 GTGGAAGAAGTGGTGGGTGAGAGGCATCCTGACTTTGGCCATGATCGCGTTTTTCTCATTATCATTAC
 CTGGGACCAATGGTTTTGATGATGATTGTTATGTGTGTCCAGATTAAGTGTTCATGAAATAATCACTA
 TTGGCTACAATGTATACCACTCCTACGACCTGCCTGGTTCAGGACCCTCAGCTGGTACTTCTCTGCTGTG
 TGTGAACTACTTCTTCTATGGGGAGACAGTGACGGACTACTTCTCACTCTGGTCCAGAGAGAGGAGCCT
 TTGCGGATCCTCAGTAAATACCACCGGTTTCATCTCCTTTGCCCTGTATCTGACAGGATTCTGCATGTTTG
 TACTGAGTCTAGTTAAGAAGCATTATCGGCTGCAGTCTACATGTTTGGCTGGACCCATGTGACCTTGCT
 TATTGTCGTAACGCAGTCACACCTTGTTATCCATAACTTGTTGAAGGAATGATATGGTTTATTGTTCCC
 ATCTCGTGCATCTGCAATGACATTATGGCCTATATGTTTGGCTTTTTCTTTGGTCCGACCCCACTCA
 TTAAGCTCTCCAAAGAAGACCTGGGAAGGCTTCATTGGGGGCTCTTTGCCACTGTGGTGTGGCCT
 TTTGCTCTCCTATGTGATGTCTGGGTACAGATGCTTCGTGTGCCGTGGAATACAACAATGACACCAAC
 AGCTTCACTGTGGACTGTGAGCCGTCTGACCTATTCCGCCTGCAGGAGTACAACATCCCTGGGGTATCC
 AGTCGGCCATTGGCTGGAAAACGGTGAGGATGTACCCCTTCCAGATCCACAGCATCGCCCTCTCCACCTT
 CGCCTCGCTCATCGGCCCTTTCGGAGGGTCTTCGCCCAGTGGATTCAAACGGGCCCTTAAATCAAAGAT
 TTTGCAATACCATTCCCGGTGATGGAGGCATCATGGATCGCTTTGACTGCCAGTACCTGATGGCCACCT
 TTGTCAATGTGTACATCGCCAGCTTATCAGGGGTCCAAACCAAGCAAAGTATCCAGCAGTTTCTGAC
 GTTGCGGCCAGATCAGCAGCTTACATCTTCAACACGCTCAAGTCTCACCTAACTGACAAGGGGATTCTG
 ACATCTGCCTTGAAGATGAG

ACGCGTACGCGGCCGCTCGAGCAGAAACTCATCTCAGAAGAGGATCTGGCAGCAAATGATATCCTGGATT
 ACAAGGATGACGACGATAAGGTTTAA



[View online »](#)

Protein Sequence: >MR229852 representing NM_001291039
Red=Cloning site Green=Tags(s)

MESESEAKLDGETASDSESRAETAPLPTSVDVTPEVLNRLSNLSSRWKNWVVRGILTLAMIAFFFIIIY
 LGPMVLMMIVMCVQIKCFHEIITIGYNYVHSYDLPWFRTL SWYFLLCVNYFFYGETVTDYFRTL VQREEP
 LRILSKYHRFISFALYL TGF C MFVLSLVKKHYRLQFYMFGWTHVTL L I V V T Q S H L V I H N L F E G M I W F I V P
 I S C V I C N D I M A Y M F G F F G R T P L I K L S P K K T W E G F I G G F F A T V V F G L L S Y V M S G Y R C F V C P V E Y N N D T N
 S F T V D C E P S D L F R L Q E Y N I P G V I Q S A I G W K T V R M Y P F Q I H S I A L S T F A S L I G P F G G F F A S G F K R A F K I K D
 F A N T I P G H G G I M D R F D C Q Y L M A T F V N V Y I A S F I R G P N P S K L I Q Q F L T L R P D Q Q L H F N T L K S H L T D K G I L
 T S A L E D E

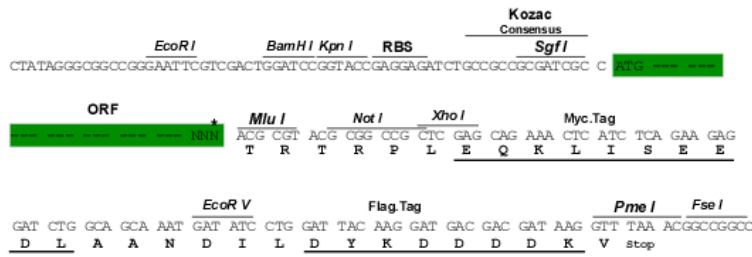
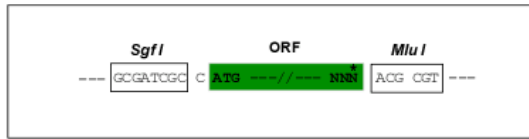
TRTRPLEQKLISEEDLAANDILDYKDDDDKV

Restriction Sites:

Sgfl-MluI

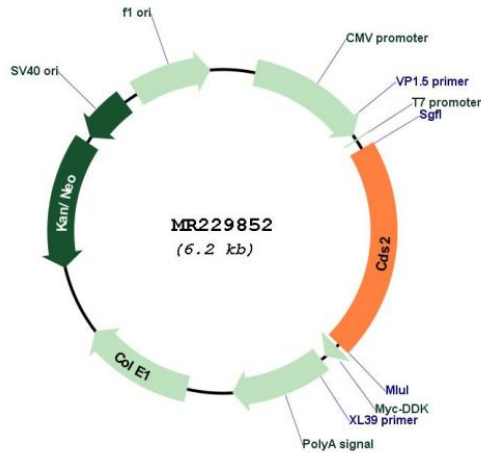
Cloning Scheme:

Cloning sites used for ORF Shuttling:



* The last codon before the Stop codon of the ORF

Plasmid Map:



ACCN:

NM_001291039

| | |
|-------------------------------|---|
| ORF Size: | 1281 bp |
| OTI Disclaimer: | The molecular sequence of this clone aligns with the gene accession number as a point of reference only. However, individual transcript sequences of the same gene can differ through naturally occurring variations (e.g. polymorphisms), each with its own valid existence. This clone is substantially in agreement with the reference, but a complete review of all prevailing variants is recommended prior to use. More info |
| OTI Annotation: | This clone was engineered to express the complete ORF with an expression tag. Expression varies depending on the nature of the gene. |
| Components: | The ORF clone is ion-exchange column purified and shipped in a 2D barcoded Matrix tube containing 10ug of transfection-ready, dried plasmid DNA (reconstitute with 100 ul of water). |
| Reconstitution Method: | <ol style="list-style-type: none">1. Centrifuge at 5,000xg for 5min.2. Carefully open the tube and add 100ul of sterile water to dissolve the DNA.3. Close the tube and incubate for 10 minutes at room temperature.4. Briefly vortex the tube and then do a quick spin (less than 5000xg) to concentrate the liquid at the bottom.5. Store the suspended plasmid at -20°C. The DNA is stable for at least one year from date of shipping when stored at -20°C. |
| RefSeq: | NM_001291039.1 , NP_001277968.1 |
| RefSeq Size: | 8089 bp |
| RefSeq ORF: | 1284 bp |
| Locus ID: | 110911 |
| UniProt ID: | Q99L43 |
| Cytogenetics: | 2 64.15 cM |
| MW: | 49.7 kDa |
| Gene Summary: | Provides CDP-diacylglycerol, an important precursor for the synthesis of phosphatidylinositol, phosphatidylglycerol, and cardiolipin.[UniProtKB/Swiss-Prot Function] |