

## Product datasheet for **MR229844**

### Syt6 (NM\_001276681) Mouse Tagged ORF Clone

#### Product data:

**Product Type:** Expression Plasmids  
**Product Name:** Syt6 (NM\_001276681) Mouse Tagged ORF Clone  
**Tag:** Myc-DDK  
**Symbol:** Syt6  
**Synonyms:** 3110037A08Rik; AW048930; sytVI  
**Vector:** pCMV6-Entry (PS100001)  
**E. coli Selection:** Kanamycin (25 ug/mL)  
**Cell Selection:** Neomycin  
**ORF Nucleotide Sequence:** >MR229844 representing NM\_001276681  
Red=Cloning site Blue=ORF Green=Tags(s)

TTTTGTAATACGACTCACTATAGGGCGCCGGGAATTCGTCGACTGGATCCGGTACCGAGGAGATCTGCC  
GCCGCGATCGCC

ATGCCCTGGAGGAAGAAAGAGGCCCTCCAGCCCTTCTTCTGCTAACCTGCTTCAGAGACTCTCCAGAGCC  
 CCAGCTCCAGAGGCAACATGGCGGATAAGCTGAAGGACCCAGTCCCTGGGCTTCTGGAGGCAGCTGT  
 GAAGATCAGCCCACTTCCCAGACATCCCAGCCGAGGTGCAGATGTCGGTCAAAGAGCACATCATGCGC  
 CACACAAAGCTGCAGCGACAGACCAGAGCCAGCATCCTCCACCAGGCACACATCCTTCAAGCGCCACC  
 TGCCACGACAGATGCATGTCTCCAGCGTGGACTATGGCAATGAGCTGCCGCCGGTGCCGCCGAGCAGCC  
 CACCAGTATTGGCCGTATCAAGCCTGAGCTTTACAAGCAGAAGTCAGTGGATGGGGATGATGCCAAGTCG  
 GAGGCCGCAAGAGCTGTGGGAAGATCAACTTCAGCCTCCGCTATGACTATGAAAGCGAGACGCTGATTG  
 TGCGCATCCTGAAGGCCCTTACCTCCCTGCCAAGGACTTTTGCAGGAAAGTCTGACCCCTATGTTAAGAT  
 CTACCTCCTGCCTGACCGCAAGTGCAAGCTGCAGACCCGGGTGCACCGCAAGACCCTGAACCCACCTTT  
 GATGAGAACTTCCACTTCCCCTGCCCTACGAGGAGCTGGTGACCGCAAGCTGCATCTCAGTGTCTTTG  
 ACTTTGACCGCTTCTCCCGCATGACATGATTGGGGAGGTCATCCTGGACAATCTCTTTGAGGCCCTGTA  
 CCTGTCCCGGGAGACCTCCATCTGGAAGGACATCCAGTACGCTACTAGTAAAGTGTGGACTTGGGAGAG  
 ATCATGTTCTCCCTCTGCTACCTGCCACAGCAGGCAGGCTCACCTCACAGTATCAAGTGTGCAAAATC  
 TCAAAGCAATGGACATCACAGGCTACTCAGATCCCTACGTCAAAGTATCCCTACTGTGTGATGGACGGAG  
 GCTGAAAAAGAAGAAAACGACCAAAAAAAGAACCCTAAACCCCATCTACAACGAGGCCATCATCTTT  
 GACATCCCCCAGAAAACATGGACCAAGTGAAGCTGCTCATCTCCGTTATGGACTATGATAGAGTTGGCC  
 ACAACGAGATCATAGGAGTCTGTAGAGTGGGGTCAATGCTGAAGGCCTTGGCAGGGACCACTGGAATGA  
 GATGTTGGCGTACCCACGAAAGCCATTGCGCACTGGCACTCCTTGGTGGAGGTAAGAAATCCTTCAA  
 GAGGGGACCCCTCGTTG

ACGCGTACGCGGCCGCTCGAGCAGAAACTCATCTCAGAAGAGGATCTGGCAGCAAATGATATCCTGGATT  
 ACAAGGATGACGACGATAAGGTTTAA



[View online »](#)

Protein Sequence: >MR229844 representing NM\_001276681  
 Red=Cloning site Green=Tags(s)

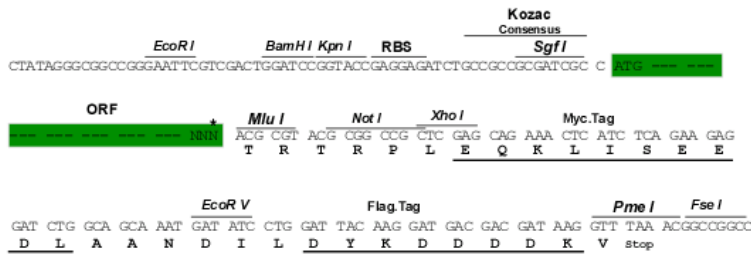
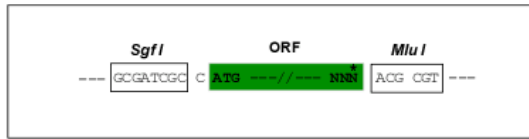
MPWRKKEASSPSSANPASETLQSPSSRGNMADKLDKPSALGFLEAAVKISHTSPDIPAEVQMSVKEHIMR  
 HTKLQRQTTEPASSTRHTSFKRHLPRQMHVSSVDYGNELPPAAAEQPTSIGRIKPELYKQKSVGDGDAKS  
 EAAKSCGKINFLRYDYESETLIVRILKAFDLPKDFCGSSDPYVKIYLLPDRKCKLQTRVHRKTLNPTF  
 DENFHFPVPEELADRKLHLVDFDFDRFSRHDIMIGEVIDNLFEASDLSRETSIWKDIQYATSESVDLGE  
 IMFSLCYLPTAGRLTLTVIKRNLKAMDITGYSDPYVKVSLLCDGRRLKTKKTTIKKNTLNPIYNEAIIIF  
 DIPPENMDQVSLLSVMDYDRVGHNEIIGVCRVGINAEGLGRDHWNEMLAYPRKPIAHWHSLEVEKKSFK  
 EGTPLR

TRTRPLEQKLISEEDLAANDILDYKDDDDKV

Restriction Sites:  
 Cloning Scheme:

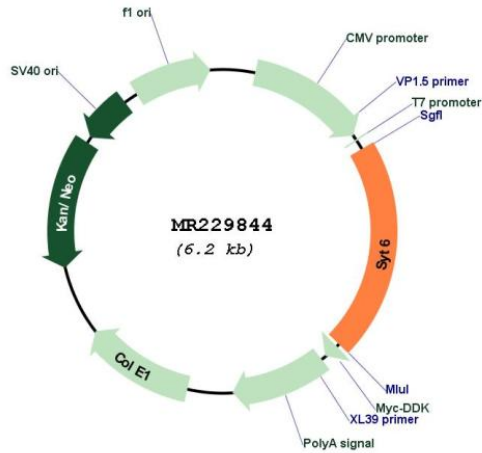
SgfI-MluI

Cloning sites used for ORF Shuttling:



\* The last codon before the Stop codon of the ORF

Plasmid Map:



ACCN: NM\_001276681

<b>ORF Size:</b>	1278 bp
<b>OTI Disclaimer:</b>	The molecular sequence of this clone aligns with the gene accession number as a point of reference only. However, individual transcript sequences of the same gene can differ through naturally occurring variations (e.g. polymorphisms), each with its own valid existence. This clone is substantially in agreement with the reference, but a complete review of all prevailing variants is recommended prior to use. <a href="#">More info</a>
<b>OTI Annotation:</b>	This clone was engineered to express the complete ORF with an expression tag. Expression varies depending on the nature of the gene.
<b>Components:</b>	The ORF clone is ion-exchange column purified and shipped in a 2D barcoded Matrix tube containing 10ug of transfection-ready, dried plasmid DNA (reconstitute with 100 ul of water).
<b>Reconstitution Method:</b>	<ol style="list-style-type: none"><li>1. Centrifuge at 5,000xg for 5min.</li><li>2. Carefully open the tube and add 100ul of sterile water to dissolve the DNA.</li><li>3. Close the tube and incubate for 10 minutes at room temperature.</li><li>4. Briefly vortex the tube and then do a quick spin (less than 5000xg) to concentrate the liquid at the bottom.</li><li>5. Store the suspended plasmid at -20°C. The DNA is stable for at least one year from date of shipping when stored at -20°C.</li></ol>
<b>RefSeq:</b>	<a href="#">NM_001276681.1</a> , <a href="#">NP_001263610.1</a>
<b>RefSeq Size:</b>	4416 bp
<b>RefSeq ORF:</b>	1281 bp
<b>Locus ID:</b>	54524
<b>Cytogenetics:</b>	3 F2.2
<b>MW:</b>	48.8 kDa
<b>Gene Summary:</b>	May be involved in Ca(2+)-dependent exocytosis of secretory vesicles through Ca(2+) and phospholipid binding to the C2 domain or may serve as Ca(2+) sensors in the process of vesicular trafficking and exocytosis (By similarity). May mediate Ca(2+)-regulation of exocytosis in acrosomal reaction in sperm (PubMed:15774481).[UniProtKB/Swiss-Prot Function]