

Product datasheet for MR229842

Syt6 (NM_001276677) Mouse Tagged ORF Clone

Product data:

Product Type: Expression Plasmids
 Product Name: Syt6 (NM_001276677) Mouse Tagged ORF Clone
 Tag: Myc-DDK
 Symbol: Syt6
 Synonyms: 3110037A08Rik; AW048930; sytVI
 Vector: pCMV6-Entry (PS100001)
 E. coli Selection: Kanamycin (25 ug/mL)
 Cell Selection: Neomycin
 ORF Nucleotide Sequence: >MR229842 representing NM_001276677
 Red=Cloning site Blue=ORF Green=Tags(s)

TTTTGTAATACGACTCACTATAGGGCGCCGGAATTCGTCGACTGGATCCGGTACCGAGGAGATCTGCC
 GCCGCGATCGCC

ATGCCCTGGAGGAAGAAAGAGGCCCTCCAGCCCTTCTTCTGCTAACCTGCTTCAGAGACTCTCCAGAGCC
 CCAGCTCCAGAGGCAACATGGCGGATAAGCTGAAGGACCCAGTCCCTGGGCTTCTGGAGGCAGCTGT
 GAAGATCAGCCCACTTCCCAGACATCCCAGCCGAGGTGCAGATGTCGGTCAAAGAGCACATCATGCGC
 CACACAAAGCTGCAGCGACAGACCAGAGCCAGCATCCTCCACCAGGCACACATCCTTCAAGCGCCACC
 TGCCACGACAGATGCATGTCTCCAGCGTGGACTATGGCAATGAGCTGCCGCCGGCTGCCGCCGAGAGCC
 CACCAGTATTGGCCGTATCAAGCCTGAGCTTTACAAGCAGAAGTCAGTGGATGGGGATGATGCCAAGTCG
 GAGGCCGCAAGAGCTGTGGGAAGATCAACTTCAGCCTCCGCTATGACTATGAAAGCGAGACGCTGATTG
 TGCGCATCCTGAAGGCCCTTACCTCCCTGCCAAGGACTTTTGCAGGAAAGTCTGACCCCTATGTTAAGAT
 CTACCTCCTGCCTGACCGCAAGTGAAGCTGCAGACCCGGGTGCACCGCAAGACCCTGAACCCACCTTT
 GATGAGAACTTCCACTTCCCCTGCCCTACGAGGAGCTGGTGACCGCAAGCTGCATCTCAGTGTCTTTG
 ACTTTGACCGCTTCTCCCGCATGACATGATTGGGGAGGTCATCCTGGACAATCTCTTTGAGGCCCTGTA
 CCTGTCCCGGGAGACCTCCATCTGGAAGGACATCCAGTACGCTACTAGTAAAGTGTGGACTTGGGAGAG
 ATCATGTTCTCCCTCTGCTACCTGCCACAGCAGGAGGCTCACCTCACAGTATCAAGTGTGCAAAATC
 TCAAAGCAATGGACATCACAGGCTACTCAGATCCCTACGTCAAAGTATCCCTACTGTGTGATGGACGGAG
 GCTGAAAAAGAAGAAAACGACCAATAAAAAAGAACACCCTAAACCCATCTACAACGAGGCCATCATCTTT
 GACATCCCCCAGAAAACATGGACCAAGTGAAGCTGCTCATCTCCGTTATGGACTATGATAGAGTTGGCC
 ACAACGAGATCATAGGAGTCTGTAGAGTGGGGTCAATGCTGAAGGCCTTGGCAGGGACCACTGGAATGA
 GATGTTGGCGTACCCACGAAAGCCATTGCGCACTGGCACTCCTTGGTGGAGGTAAGAAATCCTTCAA
 GAGGGGACCCCTCGTTG

ACGCGTACGCGGCCGCTCGAGCAGAAACTCATCTCAGAAGAGGATCTGGCAGCAAATGATATCCTGGATT
 ACAAGGATGACGACGATAAGGTTTAA



[View online »](#)

Protein Sequence: >MR229842 representing NM_001276677
 Red=Cloning site Green=Tags(s)

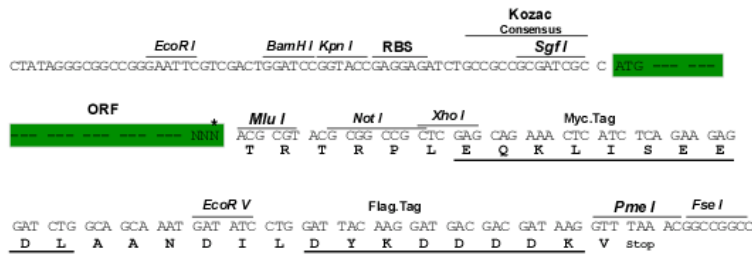
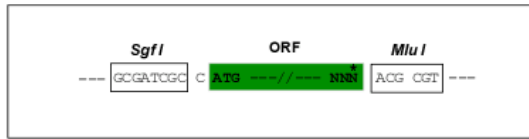
MPWRKKEASSPSSANPASETLQSPSSRGNMADKLDKPSALGFLEAAVKISHTSPDIPAEVQMSVKEHIMR
 HTKLQRQTTEPASSTRHTSFKRHLPRQMHVSSVDYGNELPPAAAEQPTSIGRIKPELYKQKSVGDGDAKS
 EAAKSCGKINFLRYDYESETLIVRILKAFDLPKDFCGSSDPYVKIYLLPDRKCKLQTRVHRKTLNPTF
 DENFHFPVPEELADRKLHLVDFDFDRFSRHDMI GEVILDNLFEASDLSRETSIWKDIQYATSESVDLGE
 IMFSLCYLPTAGRLTLTVIKRNLKAMDITGYSDPYVKVSVLLCDGRRLK KKKTTIKKNTLNPIYNEAIIIF
 DIPPENMDQVSLLSVMDYDRVGHNEIIGVCRVGINAEGLGRDHWNEMLAYPRKPIAHWHSLEVKKSKF
 EGT PRL

TRTRPLEQKLISEEDLAANDILDYKDDDDKV

Restriction Sites:
 Cloning Scheme:

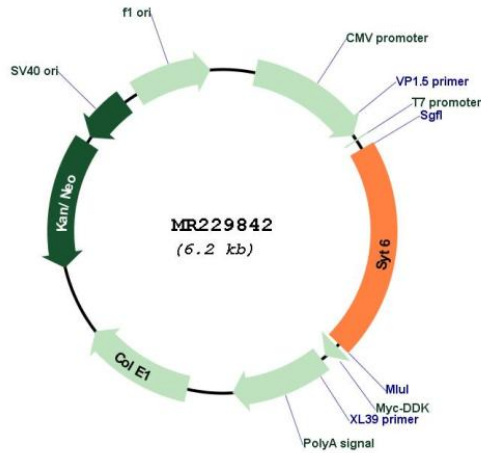
SgfI-MluI

Cloning sites used for ORF Shuttling:



* The last codon before the Stop codon of the ORF

Plasmid Map:



ACCN: NM_001276677

ORF Size:	1278 bp
OTI Disclaimer:	The molecular sequence of this clone aligns with the gene accession number as a point of reference only. However, individual transcript sequences of the same gene can differ through naturally occurring variations (e.g. polymorphisms), each with its own valid existence. This clone is substantially in agreement with the reference, but a complete review of all prevailing variants is recommended prior to use. More info
OTI Annotation:	This clone was engineered to express the complete ORF with an expression tag. Expression varies depending on the nature of the gene.
Components:	The ORF clone is ion-exchange column purified and shipped in a 2D barcoded Matrix tube containing 10ug of transfection-ready, dried plasmid DNA (reconstitute with 100 ul of water).
Reconstitution Method:	<ol style="list-style-type: none">1. Centrifuge at 5,000xg for 5min.2. Carefully open the tube and add 100ul of sterile water to dissolve the DNA.3. Close the tube and incubate for 10 minutes at room temperature.4. Briefly vortex the tube and then do a quick spin (less than 5000xg) to concentrate the liquid at the bottom.5. Store the suspended plasmid at -20°C. The DNA is stable for at least one year from date of shipping when stored at -20°C.
RefSeq:	NM_001276677.2
RefSeq Size:	1665 bp
RefSeq ORF:	1281 bp
Locus ID:	54524
Cytogenetics:	3 F2.2
MW:	48.8 kDa
Gene Summary:	May be involved in Ca(2+)-dependent exocytosis of secretory vesicles through Ca(2+) and phospholipid binding to the C2 domain or may serve as Ca(2+) sensors in the process of vesicular trafficking and exocytosis (By similarity). May mediate Ca(2+)-regulation of exocytosis in acrosomal reaction in sperm (PubMed:15774481).[UniProtKB/Swiss-Prot Function]