

Product datasheet for MR229827

Nasp (NM_001284229) Mouse Tagged ORF Clone

Product data:

Product Type:	Expression Plasmids
Product Name:	Nasp (NM_001284229) Mouse Tagged ORF Clone
Tag:	Myc-DDK
Symbol:	Nasp
Synonyms:	5033430J04Rik; A1131596; A1317140; D4Ertd767e; Epcs32; Nasp-T
Vector:	pCMV6-Entry (PS100001)
E. coli Selection:	Kanamycin (25 ug/mL)
Cell Selection:	Neomycin
ORF Nucleotide Sequence:	>MR229827 representing NM_001284229 Red=Cloning site Blue=ORF Green=Tags(s)

TTTTGTAATACGACTCACTATAGGGCGCCGGAATTCGTCGACTGGATCCGGTACCGAGGAGATCTGCC
GCC**CGGATCGCC**

ATGGCCACAGAGTCTACAGCCGCTGCTGCCATCGCCGCGGAGCTGGTTCCGCTGACAAAATTGAAGATG
CTCCTGCTCCTTCTACCTCGGCAGATAAAATGGAGAGTCTGGATGTGGATAGTGAAGCTAAGAACTACT
GGGATTAGGACAGAAACATCTGGTGATGGGTGACATTCCAGCAGCTGTTAATGCATTCCAGGAAGCAGCT
AGTCTTTAATGGAGAATGGAGTGTGGGAAATGCCTTAGAAGGAGTGCATGTAGAAGAGGAAGAAGGAG
AAAAAACAGAAGATGAATCTTTGGTAGAAAATAATGATAATGTAGATGAACTGAAGGCTCAGAGGAAGA
GGCAGAGAAAATGACAAGGCTGAAGAAACACCAAATGAATCAGTTCTTGAAAAAAGTCTCTTCAAGAA
AATGAAGAGGAGGAGATAGGGAATTTGGAACCTGCCTGGGATATGCTGGATTTAGCCAAGATCATTTTTA
AGAGGCAAGAAACAAAAGAAGCCAGCTTTATGCTGCACAAGCCCATCTAACTTGAGAAAGTTAGTGT
TGAATCTGAGAATTATATCCAAGCTGTGGAGGAGTTTCAGGCTTGCCCTAAGCCTGCAAGAACAATATTTG
GAAGCTCAGCATCGTCTCCTTGCAGAGACTCACTACCAATTAGGTTTGGCCTATGGTTACAACCTCAGT
ATGATGAAGCAGTAGCACAGTTTGGCAAATCTATCGATGTCATTGAAAAGAGAATGGCTGTACTCCATGA
GCAGATGAAGGAGCCGAAGGATCGTTTACTGAATATGAGAAAGAAATTGAGGAGCTGAAAGAAGCTGCTA
CCTGAAATTCGAGAGAAGATAGAAGACGCAAAGGAATCTCAGCGGAGTGGGAATGTAGCCGAAGTGGCAC
TGAAAGCTACTCTGGTGGAGAGCTCTACTTCCGGTTTCACTCCTAGTGGAGCTGGTGCCTCAGTATCCAT
GATTGCCAGTAGAAAACCAACAGATGGCGCTTCTCATCAAATTTGTGACTGATATTTCCCATCTTGTC
AGAAAGAAGAGGAAACAGAGGAAGAGAGTCCCCGGAAGGATGATGCAAAGAAAGCTAAACAAGAGCCAG
AGGTGAATGGAGGAGTGGGGATGCTGTCTCCAGTGGAAAGGATTTTCAGAAAACATGGAGGCCGAGGC
TGAGAATCAGGCTGAGAGCCAAACAGCAGAGGGGACCGTGGAGTCTGCAGCTACAATTAAGCACTGCA
TGT

ACGCGTACGCGGCCGCTCGAGCAGAAACTCATCTCAGAAGAGGATCTGGCAGCAAATGATATCCTGGATT
ACAAGGATGACGACGATAAGGTTTAA



[View online »](#)

Protein Sequence: >MR229827 representing NM_001284229
Red=Cloning site Green=Tags(s)

MATESTAAAAIAAELVSADKIEDAPAPSTSADKMESLDVDSEAKLLGLGQKHLVMGDIPA AVNAFQEAASLLMENGVLGNALGVHVEEEEKTEDESLVENNDNVDETEGSEEDRENDKAEETPNESVLEKKS LQENEEEEIGNLELAWDMLDLAKIIFKRQETKEAQLYAAQAHLKLGESVSENYIQAVEEFQACLSLQEQYL EAHDRLLAETHYQLGLAYGYN SQYDEAVAQFGKSIDVIEKRMV LHEQMKEAGSFTEYEKEIEELKELL PEIREKIEDAKESQ RSGNVAELALKATL VESSTSGFTPSGAGASVSM IASRKPTDGASSNCVTDI SHLVRKKRKP EEE SPRKDDAKKAKQEPEVNGSGDAVSSGKEVSENMEAEAENQAESQT AEGTVESAATIKSTAC

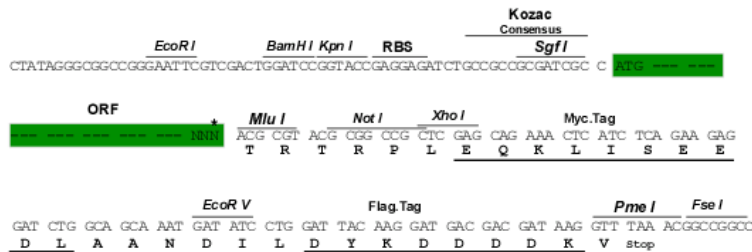
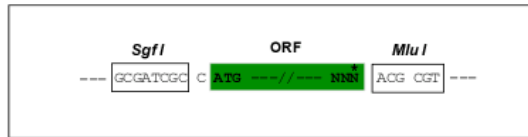
TRTRPLEQKLISEEDLAANDILDYKDDDDKV

Restriction Sites:

SgfI-MluI

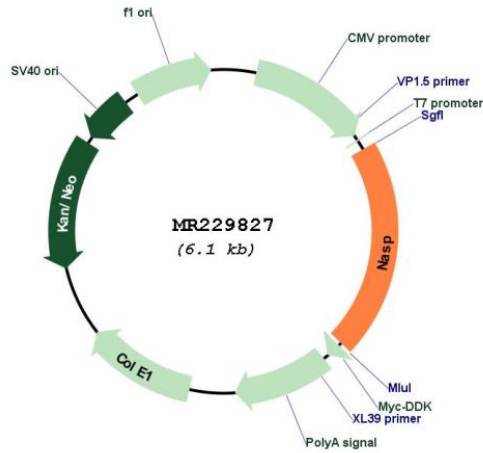
Cloning Scheme:

Cloning sites used for ORF Shuttling:



* The last codon before the Stop codon of the ORF

Plasmid Map:



ACCN:

NM_001284229

ORF Size:	1263 bp
OTI Disclaimer:	The molecular sequence of this clone aligns with the gene accession number as a point of reference only. However, individual transcript sequences of the same gene can differ through naturally occurring variations (e.g. polymorphisms), each with its own valid existence. This clone is substantially in agreement with the reference, but a complete review of all prevailing variants is recommended prior to use. More info
OTI Annotation:	This clone was engineered to express the complete ORF with an expression tag. Expression varies depending on the nature of the gene.
Components:	The ORF clone is ion-exchange column purified and shipped in a 2D barcoded Matrix tube containing 10ug of transfection-ready, dried plasmid DNA (reconstitute with 100 ul of water).
Reconstitution Method:	<ol style="list-style-type: none">1. Centrifuge at 5,000xg for 5min.2. Carefully open the tube and add 100ul of sterile water to dissolve the DNA.3. Close the tube and incubate for 10 minutes at room temperature.4. Briefly vortex the tube and then do a quick spin (less than 5000xg) to concentrate the liquid at the bottom.5. Store the suspended plasmid at -20°C. The DNA is stable for at least one year from date of shipping when stored at -20°C.
RefSeq:	NM_001284229.1 , NP_001271158.1
RefSeq Size:	2037 bp
RefSeq ORF:	1266 bp
Locus ID:	50927
UniProt ID:	Q99MD9
Cytogenetics:	4 53.24 cM
MW:	46.2 kDa
Gene Summary:	Required for DNA replication, normal cell cycle progression and cell proliferation. Forms a cytoplasmic complex with HSP90 and linker H1 histones and stimulates HSP90 ATPase activity. NASP and H1 histone are subsequently released from the complex and translocate to the nucleus where the histone is released for binding to DNA.[UniProtKB/Swiss-Prot Function]