

Product datasheet for MR229776

Zdhhc6 (NM_025883) Mouse Tagged ORF Clone

Product data:

Product Type:	Expression Plasmids
Product Name:	Zdhhc6 (NM_025883) Mouse Tagged ORF Clone
Tag:	Myc-DDK
Symbol:	Zdhhc6
Synonyms:	2400007G07Rik; 5930409M18Rik; AI462345; C77369
Mammalian Cell Selection:	Neomycin
Vector:	pCMV6-Entry (PS100001)
E. coli Selection:	Kanamycin (25 ug/mL)
ORF Nucleotide Sequence:	>MR229776 ORF sequence Red=Cloning site Blue=ORF Green=Tags(s)

TTTTGTAATACGACTCACTATAGGGCGGCCGGAATTCGTCGACTGGATCCGGTACCGAGGAGATCTGCC
GCC**CGGATCGCC**

ATGGGCATATTCTGCTCAGTAATCAAGTTTGAAAATCTTCAAGACTTAAGGAGACTGTGTCATTGGGGTCCATCATAGCCCTGGGTGTTATAGCAATATGTTCCACAATGGCCATGATCGACTCTGTCTGTGGTATTGGCCCTTACATACAACTGGAGGAAGTGTGAACCTCATCATGTTGATAAATTGGACCGTCATGATTCTTTATAATTACTCAATGCCATGTTTGGTCTCGCTCGTCCCTCGGGGTGAAACCGGAAAAGTCTCAGGATAGCATGTATCTCCAGTATTGTAAGTCTGCCAAGCATACAAGGCGCCACGTTACACCATTGCAGAAAGTGAACAGATGTGTAATGAAGATGGACCACCTGCCCCGGATCAACAACCTGCTGTGGTACCAGAACACGCCTCGTTCACGCTCTTCTCCTGTTGGCCCCCTGGGCTGCACTCATGCTGCTTTCATCTTCGTGATGACAATGTACACACAGCTTTATAATCGGCTCTCCTTTGGGTGGAACACAGTCAAGATTGACATGAGTGCAGCCAGGAGAGATCCACCTCCAATTGTTCCCTTCGGATTGGTGGCTTGGCCACCTGTTTGCCTTGGATTGGCTTTGGGAACAACCATAGCTGTTGGGATGTTGTTTTTCATACAGATAAAAATTATTCTCAGAACAAAACCTTCTATTGAATCATGGATTGAAGAAAAGGCTAAAGATCGCATTCAAGTATTACCAACTGGATGAGTCTTCATTTTTCCCTTATGATATGGGAAGTAAGTGAAGAACCTTAAACAGGTGTTACATGGTCCGGAGTTCTCTGAAGGAGATGGACTTGAGTGGCCAATACGAGAGGGCTGTGACCCAGTACAGCCTCACAATAGAACAGTTGAAGCAAAAAGGCAGACAAGAGAGTCAAGAAGTGTTCGCTATAAAGTCATAGAAGATTACAATGGTGCCTGCTGCCCTTTGAATAGAGGAGTGAGAACCTTTTACGAGCCCTGCACTGAGGAGCCTCGGATCCGGCTGCGAGAAAGGAGAGTTCATCTTAGCAACGAGAGGGCTGCGATACTGGTTGTATGGAGACAAAATCTTGTGATTCCTTCATAGAAGTACTTCAAGAGTAAGAGGGTGGTTTCTAGAAAAGTGTGGAAAAGTGTCCCTGTGATGGTGACTCAGATCCAGCCCCAGAGGGGAGAAGAACAAGA

ACGCGTACGCGGCCGCTCGAGCAGAAAACCTCATCTCAGAAGAGGATCTGGCAGCAAATGATATCTGGATT
ACAAGGATGACGACGATAAGGTTTAA



Protein Sequence: >MR229776 protein sequence
 Red=Cloning site Green=Tags(s)

MGIFCSVIKFENLQDLRRLCHWGPIIALGVIAICSTMAMIDSVLWYWPLHTTGGSVNFIMLINWTVMILY
 NYFNAMFAGPGFVPRGWKPEKSQDSMYLQYCKVCQAYKAPRSHHCRKCNRCVMKMDHHCWPWINNCCGHQN
 HASFTLFLLAPLGLCTHAAFIFVMTMYTQLYNRLSFGWNTVKIDMSAARRDPPPIVPFGLAAFAATLAL
 GLALGTTIavgmlffIQIKIILRNKTSIESWIEEKAKDRIQYYQLDEVFIFPYDMGSKWKNFKQVFTWSG
 VPEGDGLEWPIREGCDQYSLTIEQLKQKADKRVRSVRYKVIEDYNGACCPNLRGVRTFFTSPTCTEEPRIR
 LQKGEFILATRGLRYWLYGDKILDSDSIEGTSRVRGWFRNCVEKPCDGDSDPAPEGEKKNR

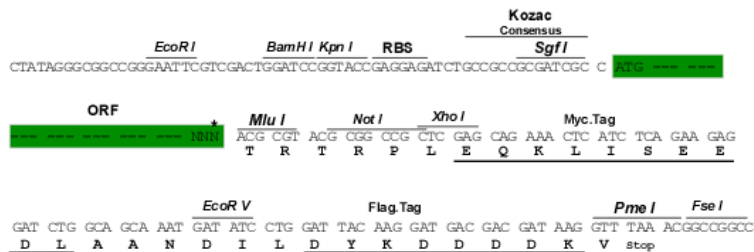
TRTRPLEQKLISEEDLAANDILDYKDDDDKV

Restriction Sites:

Sgfl-MluI

Cloning Scheme:

Cloning sites used for ORF Shuttling:



* The last codon before the Stop codon of the ORF

ACCN: NM_025883

ORF Size: 1239 bp

OTI Disclaimer: The molecular sequence of this clone aligns with the gene accession number as a point of reference only. However, individual transcript sequences of the same gene can differ through naturally occurring variations (e.g. polymorphisms), each with its own valid existence. This clone is substantially in agreement with the reference, but a complete review of all prevailing variants is recommended prior to use. [More info](#)

OTI Annotation: This clone was engineered to express the complete ORF with an expression tag. Expression varies depending on the nature of the gene.

Components: The ORF clone is ion-exchange column purified and shipped in a 2D barcoded Matrix tube containing 10ug of transfection-ready, dried plasmid DNA (reconstitute with 100 ul of water).

Reconstitution Method:

1. Centrifuge at 5,000xg for 5min.
2. Carefully open the tube and add 100ul of sterile water to dissolve the DNA.
3. Close the tube and incubate for 10 minutes at room temperature.
4. Briefly vortex the tube and then do a quick spin (less than 5000xg) to concentrate the liquid at the bottom.
5. Store the suspended plasmid at -20°C. The DNA is stable for at least one year from date of shipping when stored at -20°C.

Note: Plasmids are not sterile. For experiments where strict sterility is required, filtration with 0.22um filter is required.

RefSeq: [NM_025883.4](#)

RefSeq Size: 2182 bp

RefSeq ORF: 1242 bp

Locus ID: 66980

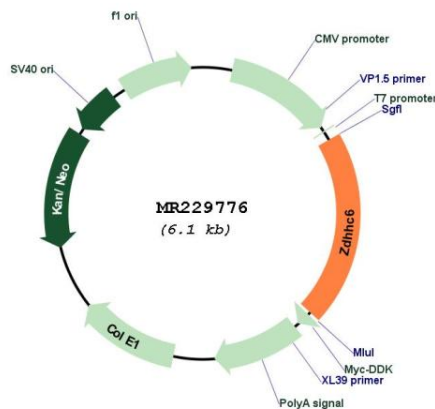
UniProt ID: [Q9CPV7](#)

Cytogenetics: 19 D2

MW: 47.5 kDa

Gene Summary: Endoplasmic reticulum palmitoyl acyltransferase that mediates palmitoylation of proteins such as AMFR, CALX, ITPR1 and TFRC (PubMed:25368151). Palmitoylates calnexin (CALX), which is required for its association with the ribosome-translocon complex and efficient folding of glycosylated proteins (By similarity). Mediates palmitoylation of AMFR, promoting AMFR distribution to the peripheral endoplasmic reticulum (By similarity). Together with SELENOK, palmitoylates ITPR1 in immune cells, leading to regulate ITPR1 stability and function (PubMed:25368151).[UniProtKB/Swiss-Prot Function]

Product images:



Circular map for MR229776